



**COMPANY
PROFILE.**

**TURNING
EXPERIENCE
INTO RELIABILITY
AND
CONSISTENT
QUALITY.**

**OUR
MISSION.**





THE VALUE OF EXPERIENCE.

Fluid-App is a new player in the hydraulic valves and components market.

New but experienced at the same time!

Its founders have been working for almost twenty years in the production of hydraulic components made in Italy to always offer the best in terms of quality, reliability and on-time delivery.

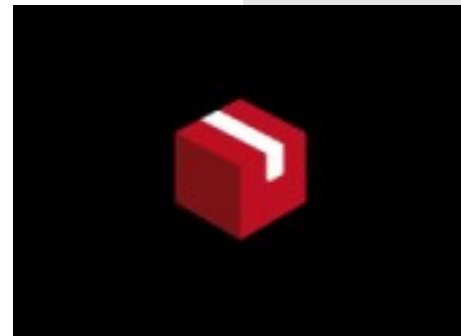
Years and years of consolidated technical and production experience at the service of the customer, also to study and customise products in synergy.

In its plant in Reggio Emilia, in the heart of the Italian hydraulics territory, Fluid-app designs and manufactures a wide range of hydraulic valves and components for many applications: from the agricultural to the earth-moving sector, from building to ecology, from transport to industrial vehicles.



FAST DELIVERY.

Long-established production procedures, flexibility, problem-solving skills and a highly specialised team enable us to regularly fulfil customer orders and deliver worldwide.



TOP ITALIAN QUALITY.

The all-Italian quality of our valves is the result of both the close partnership with suppliers located in our own territory and the long and consolidated experience in design and industrialisation of our team.

RELIABILITY.

We have always put our customers' satisfaction at the forefront of our work. On the strength of their trust and appreciation we will drive Fluid-app with renewed enthusiasm to always offer the best in terms of quality and reliability.

A collage of ten images showing various construction and industrial vehicles. The images are arranged in a grid-like fashion, with some overlapping. The vehicles include: a street sweeper, a crane lifting a large block, a forklift, a scissor lift, a front loader, a backhoe, a truck-mounted crane, a skid steer loader, a Case excavator, and a semi-truck with a front loader. The vehicles are shown in various settings, including construction sites, industrial areas, and streets.



AGRICULTURE AND FORESTRY.

Our valves are suitable for forestry and agricultural fields: sprayers, round balers, cutters and forest machines are just some of the potential destinations of our products.



EARTH MOVING.

In the construction sector excavators, drilling machines and concrete pumps are among the most common ones.



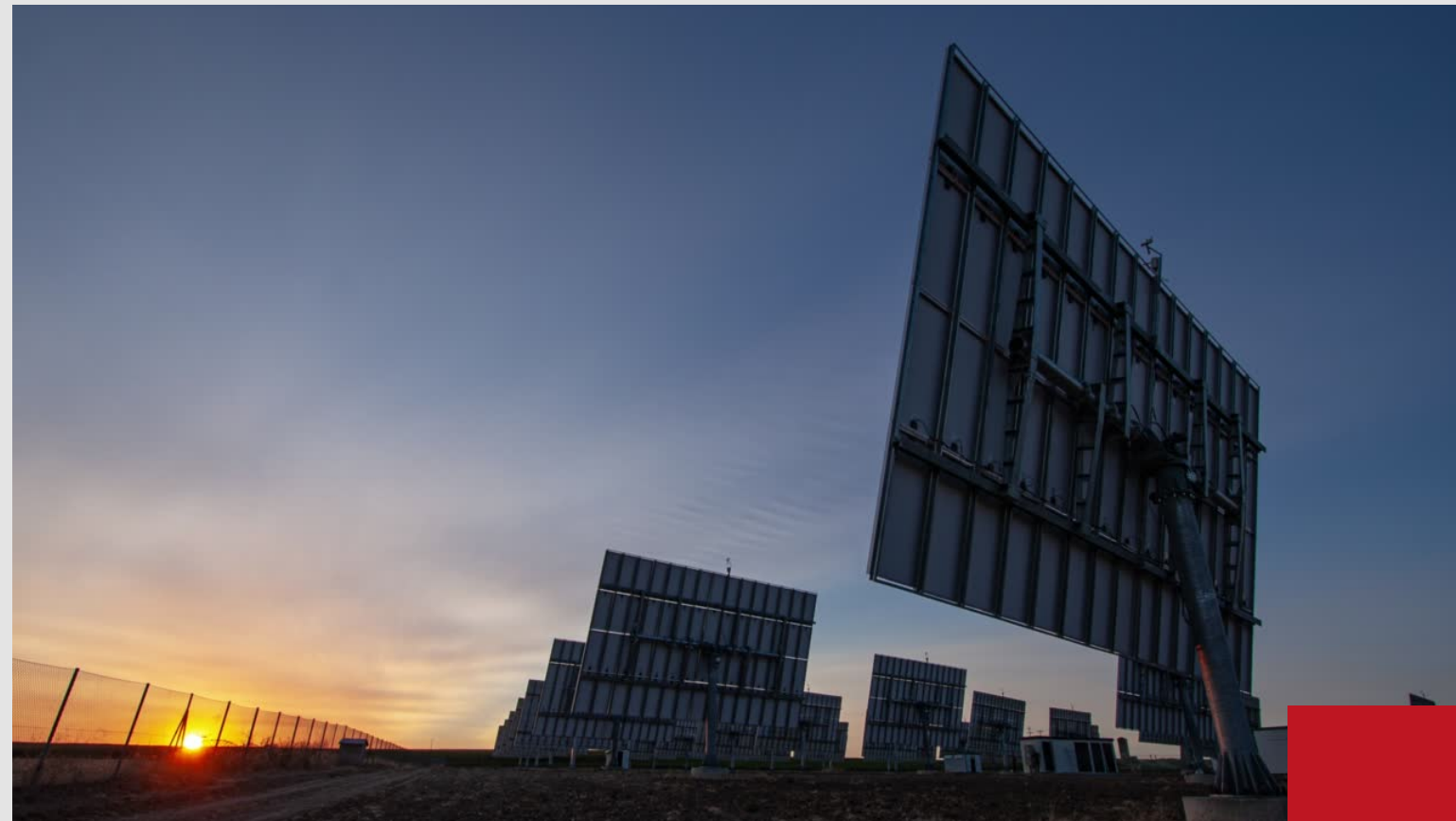
LIFTING.

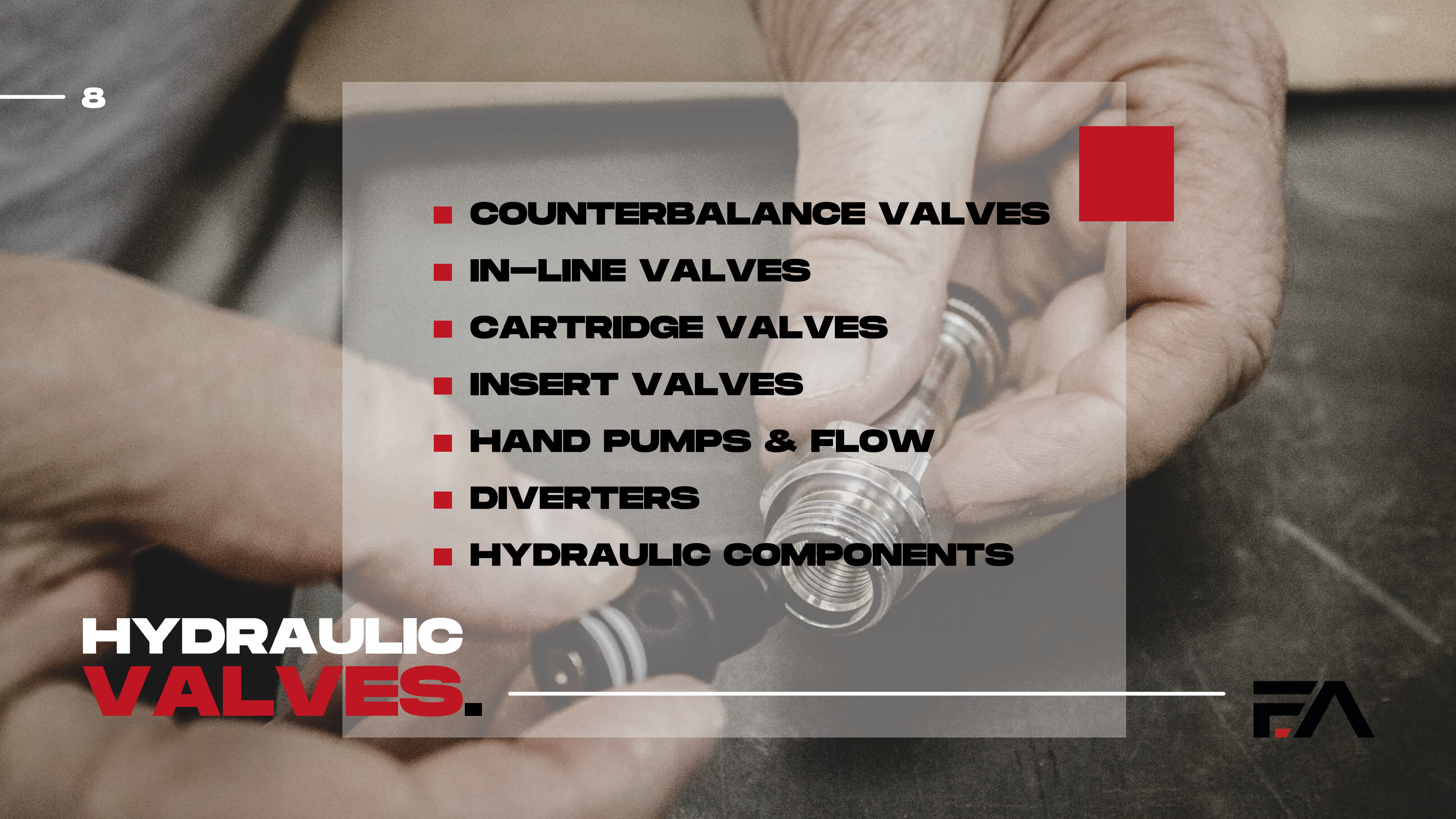
In the lifting and material handling market we can provide valves for aerial platforms, cranes and tail lifts.



INDUSTRIAL APPLICATIONS.

And last but not least in the industrial sector we sweep from renewable energies to packaging and automation.



- 
- **COUNTERBALANCE VALVES**
 - **IN-LINE VALVES**
 - **CARTRIDGE VALVES**
 - **INSERT VALVES**
 - **HAND PUMPS & FLOW**
 - **DIVERTERS**
 - **HYDRAULIC COMPONENTS**

HYDRAULIC
VALVES.





COUNTERBALANCE VALVES.

Counterbalance valves, also known as overcenter valves, are a type of pressure control valves. They prevent uncontrolled lowering of the load on cylinders or engines and are therefore preloaded with a pressure setting higher than the maximum permitted load.

- SINGLE COUNTERBALANCE VALVES
- DOUBLE COUNTERBALANCE VALVES





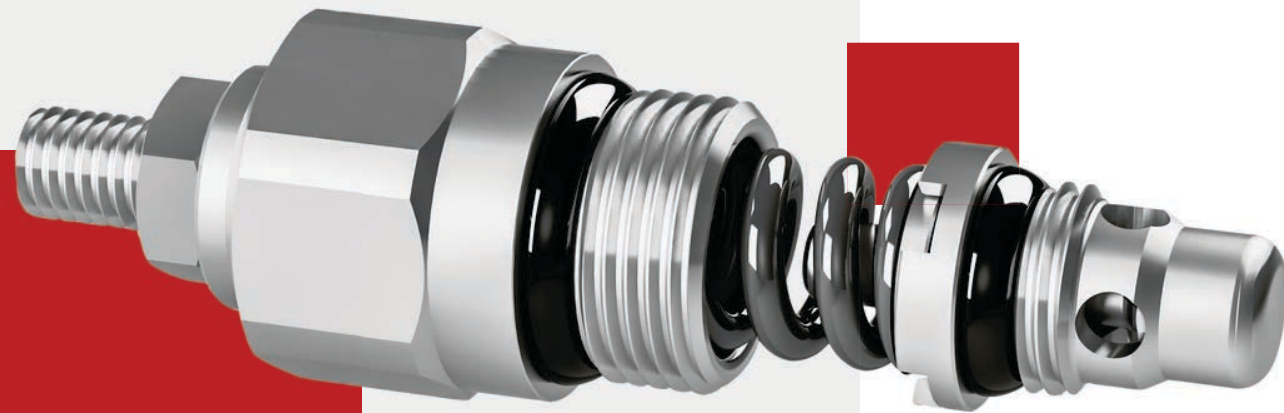
IN-LINE VALVES.

In-line valves are mounted inline on hydraulic circuit applications.

Within this category are available: check valves, flow control valves pressure compensated, shuttle valves, flow divider/combiner valves, priority valves, in-line direct sequence valves, pilot check valves, direct acting relief valves and single stages Cetop manifolds.

- CHECK VALVES
- FLOW CONTROL VALVES
- SHUTTLE VALVES
- FLOW DIVIDER/COMBINER VALVES
- 3 WAYS FLOW CONTROL VALVES
- PILOT CHECK VALVES
- DIRECT ACTING RELIEF VALVES
- CETOP3 SINGLE MANIFOLDS





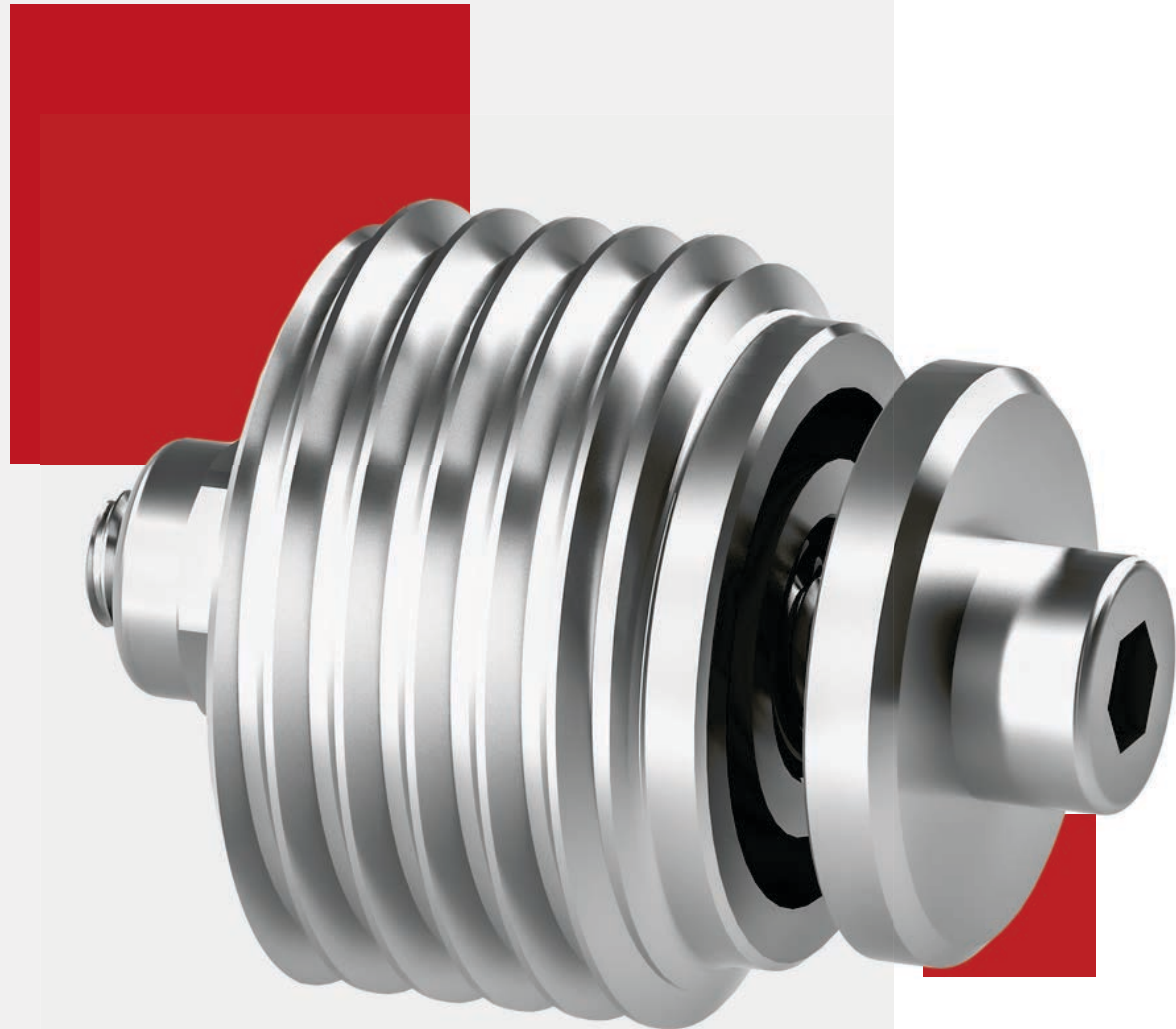
CARTRIDGE VALVES.

Cartridge valves need to be screwed into a manifold, in which the female cavity (SAE or METRIC) suitable for the valve is obtained.

They perform various functions, including sealing, flow, pressure and direction. They can be controlled manually or electrically.

- CARTRIDGE RELIEF VALVES
- ELECTRICALLY OPERATED VALVES
- COILS
- CONNECTORS
- CAVITY





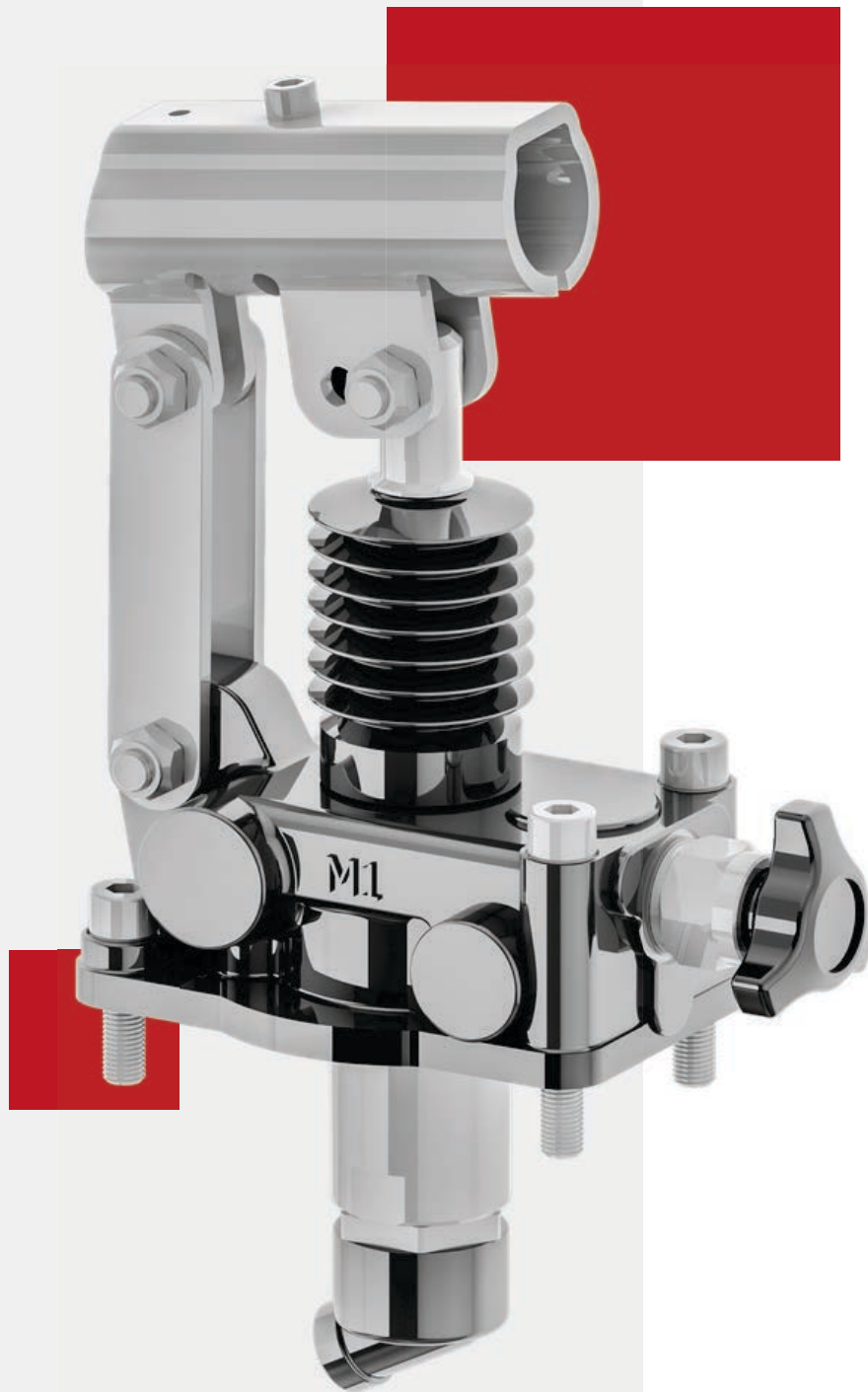
INSERT VALVES.

Insert valves are installed in female cavities.

Within this category we find: fixed flow control valves – pressure compensated safety valves for hoses, safety valves for hoses DIN housing, unidirectional valves-ball type.

- HOSE BURST VALVES
- FLOW CONTROL VALVES PRESSURE
- COMPENSATED
- CHECK VALVES





HAND PUMPS & FLOW DIVERTERS.

The category hand pumps and flow diverters includes hand pumps in different types and displacements, steel and aluminium tanks as well as 3/4/6/8 way flow diverters

- HAND PUMPS AND TANKS
- FOOT PUMPS
- FLOW DIVERTERS AND INVERTERS
- BALL VALVES





HYDRAULIC COMPONENTS.

This category includes products for the hydraulic system, such as test couplings for pressure checking and pressure gauge isolator valves.

- TEST COUPLINGS
- SHUT-OFF VALVES
- DIN3852 PLUGS



FLUID-APP PARTNERS.

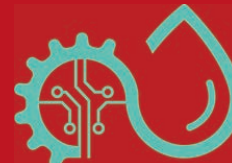


Assofluid Italian Association of
Manufacturers and Operators in the
Hydraulics and Pneumatics Sector



Aderente a Unindustria Reggio Emilia

Unindustria Reggio Emilia is the
territorial association of the
Confindustria system



FEDERTEC

Federtec is the federation that
represents the entire chain of the
Italian industry of Components and
Mechatronic Technologies for Fluid
Power, Power Transmission, Control and
Intelligent Automation of Products and
Industrial Processes



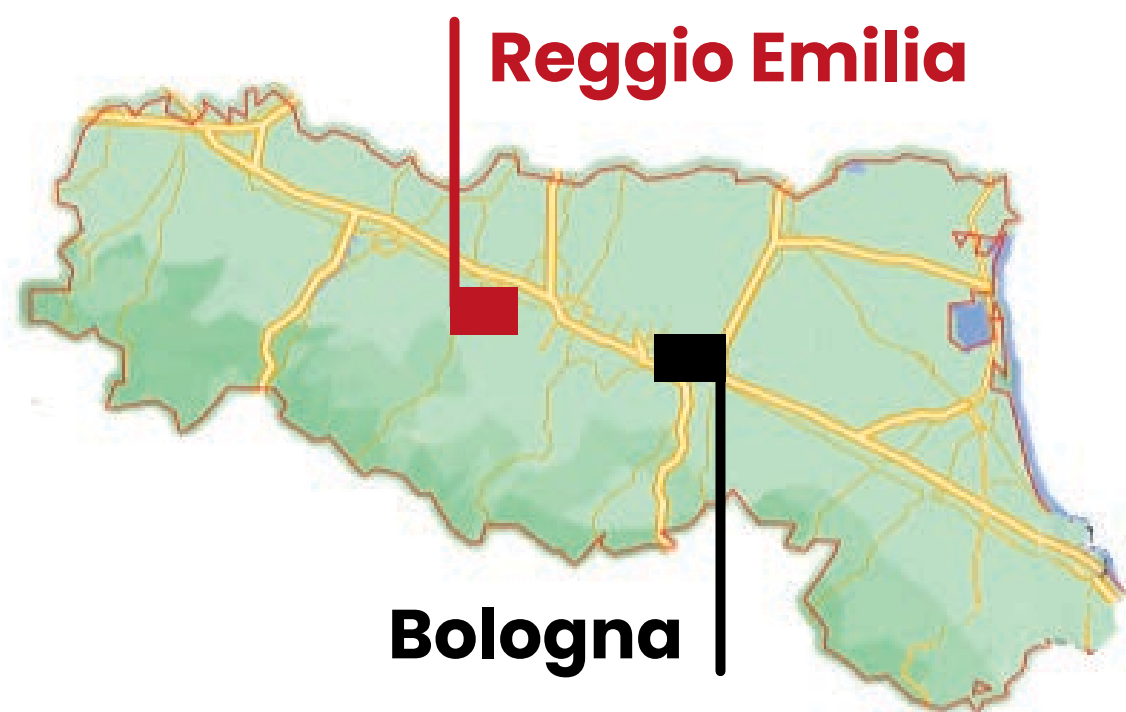


WHERE WE ARE.

VIA GARONNA, 26 REGGIO EMILIA

61 km from Bologna to Reggio Emilia.

142 km from Milano to Reggio Emilia.



FLUID-APP TEAM.



FRANCO GIAROLI

Owner

franco.giaroli@fluid-app.it ☎ +39 0522 1722451



GIAN LUCA CAVAZZUTI

Co-Founder | Plant Manager

luca.cavazzuti@fluid-app.it ☎ +39 0522 1891296

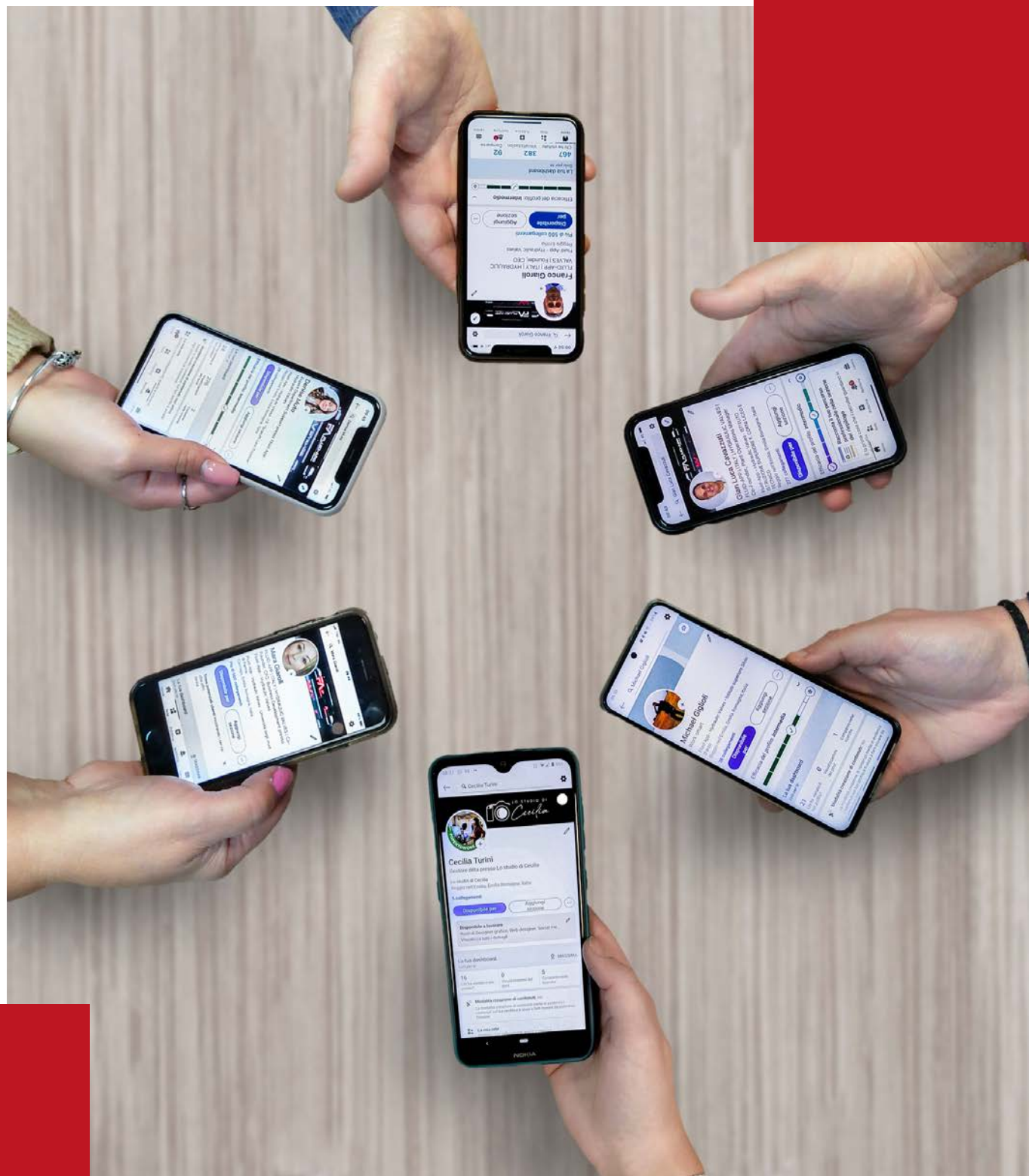


MARA GIAROLI

Co-Founder | CFO | Business Development

mara.giaroli@fluid-app.it ☎ +39 0522 1891293





**FOLLOW US
ON OUR
SOCIALS.**

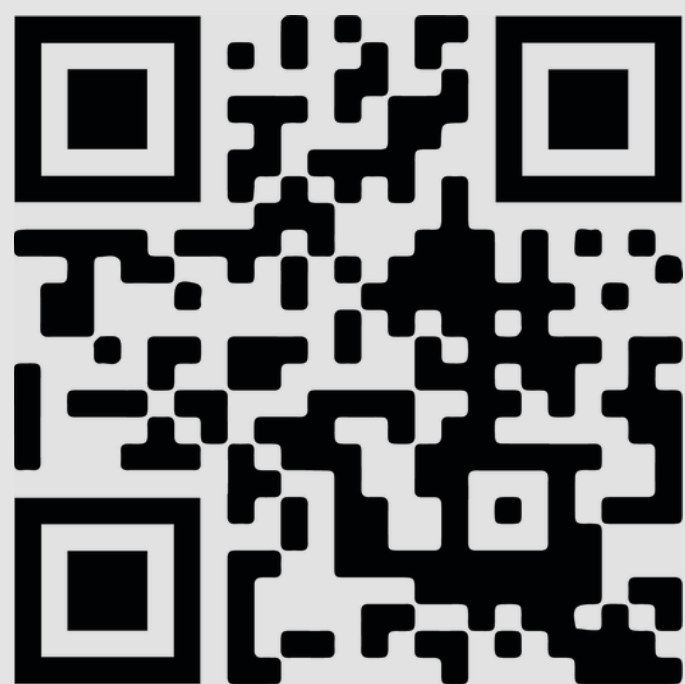


**COME TO
OUR WEBSITE
AND DISCOVER ALL
OUR
PRODUCTS!**

WWW.FLUID-APP.IT



OUR CONTACTS.



WEB SITE

<https://www.fluid-app.it/>

CATALOGUE

<https://www.fluid-app.it/download/>

FOR INFORMATION

sales@fluid-app.it

info@fluid-app.it

CALL US

+39 0522 1722451



SOLUTIONS FOR THE CUSTOMERS.
CONSISTENT QUALITY.
QUICK FEEDBACK.
FLEXIBILITY.
GROWING TOGETHER.



Fluid-App Srl

Via Garonna n° 26 - 42124 Reggio Emilia (RE) - ITALY | Tel. +39 0522 1722451
| Fax +39 0522 1722450 R.E.A. RE 326165 | C.F. e Partita IVA: 02935660353 |
VAT NR. IT02935660353 | www.fluid-app.it | email: sales@fluid-app.it