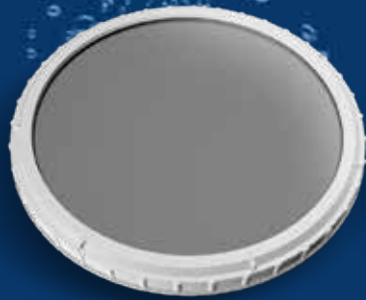


Ecoflex[®]



XS9"

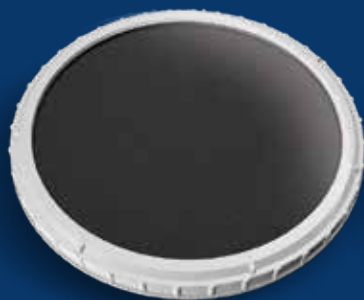
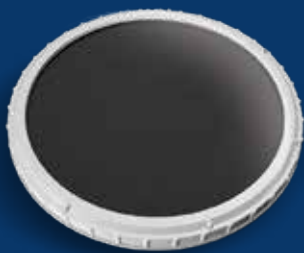


11"



SILICONE

XL14"



EPDM



ECOFLEX® EPDM DISC DIFFUSER SERIES 11"

OPERATING RANGE

Model	Pore size µm	Range flow rate (Nm ³ /h) min-max	Optimal flow rate (Nm ³ /h)	Standard connection	Max temperature Celsius/ Fahrenheit	Operating procedure	Application
EC050D	60	2-8	5	1" M	130°C/266°F	continous intermittent	Aeration tank
EC0100D	100	3-10	6	1" M	130°C/266°F	continous intermittent	Aeration tank, anaerobic sludge digestion
EC0150D	150	3-14	8	1" M	130°C/266°F	continous intermittent	Aeration tank, anaerobic sludge digestion
Membrane in NBR, PTFE. Coated, Plasma treated, are available on request							
EC050D HE	60	2-9	5	1" M	130°C/266°F	continous intermittent	Aeration tank

DIMENSION

Type	Total height (mm)	Diameter total (mm)	Diameter effective (mm)	Over all height above air distributor (mm)	Perforated area (m ²)	Total weight (kg)
Ecoflex®	93	280	240	68	0,05	1,1
Connection 3/4" F, 3/4" M, 1" F or NPT thread, available on request						

ECOFLEX® SILICONE DISC DIFFUSER SERIES 11"

OPERATING RANGE



Model	Pore size µm	Range flow rate (Nm ³ /h) min-max	Optimal flow rate (Nm ³ /h)	Standard connection	Max temperature Celsius/ Fahrenheit	Operating procedure	Application
EC050S	60	2-8	5	1" M	230°C/446°F	continous intermittent	Aeration tank
EC0100S	100	3-10	6	1" M	230°C/446°F	continous intermittent	Aeration tank, anaerobic sludge digestion
EC0150S	150	3-14	8	1" M	230°C/446°F	continous intermittent	Aeration tank, anaerobic sludge digestion
Membrane in NBR, PTFE coated, Plasma treated, available on request							
EC050S HE	60	2-9	5	1" M	230°C/446°F	continous intermittent	Aeration tank

DIMENSION

Type	Total height (mm)	Diameter total (mm)	Diameter effective (mm)	Over all height above air distributor (mm)	Perforated area (m ²)	Total weight (kg)
Ecoflex®	93	280	240	68	0,05	1,1
Connection 3/4" F, 3/4" M, 1" F or NPT thread, available on request						

ECOFLEX® XS EXTRA SMART SERIES 9" EPDM OPERATING RANGE



Model	Pore size µm	Range flow rate (Nm³/h) min-max	Optimal flow rate (Nm³/h)	Standard connection	Max temperature Celsius/ Fahrenheit	Operating procedure	Application
ECOXS50D	60	1-7	4	3/4" M	130°C / 266° F	continous intermittent	Aeration tank
ECOXS100D	100	1,5-8	6	3/4" M	130°C / 266° F	continous intermittent	Aeration tank, anaerobic sludge digestion
ECOXS150D	150	1,8-10	8	3/4" M	130°C / 266° F	continous intermittent	Aeration tank, anaerobic sludge digestion

Membrane in NBR, PTFE. Coated, Plasma treated, are available on request

DIMENSION

Type	Total height (mm)	Diameter total (mm)	Diameter effective (mm)	Over all height above air distributor (mm)	Perforated area (m²)	Total weight (kg)
Ecoflex® XS	93	240	200	68	0,03	0,7

Connection 3/4F, 1" M, 1" F or NPT thread, available on request



ECOFLEX® XS EXTRA SMART SERIES 9" SILICONE OPERATING RANGE

Model	Pore size µm	Range flow rate (Nm³/h) min-max	Optimal flow rate (Nm³/h)	Standard connection	Max temperature Celsius/ Fahrenheit	Operating procedure	Application
ECOXS50S	60	1-7	4	3/4" M	230°C / 446° F	continous intermittent	Aeration tank
ECOXS100S	100	1,5-8	6	3/4" M	230°C / 446° F	continous intermittent	Aeration tank, anaerobic sludge digestion
ECOXS150S	150	1,8-10	8	3/4" M	230°C / 446° F	continous intermittent	Aeration tank, anaerobic sludge digestion

Membrane in NBR, PTFE. Coated, Plasma treated, are available on request

DIMENSION

Type	Total height (mm)	Diameter total (mm)	Diameter effective (mm)	Over all height above air distributor (mm)	Perforated area (m²)	Total weight (kg)
Ecoflex® XS	93	240	200	68	0,03	0,7

Connection 3/4F, 1" M, 1" F or NPT thread, available on request



ECOFLEX® XL EXTRA LARGE DISC DIFFUSER SERIES 14" EPDM OPERATING RANGE

Model	Pore size µm	Range flow rate (Nm ³ /h) min-max	Optimal flow rate (Nm ³ /h)	Standard connection	Max temperature Celsius/ Fahrenheit	Operating procedure	Application
ECOXL50D	60	3-15	9	1" M	130°C / 266° F	continous intermittent	Aeration tank
ECOXL100D	100	4-18	10	1" M	130°C / 266° F	continous intermittent	Aeration tank, anaerobic sludge digestion
ECOXL150D	150	4,5-22	12	1" M	130°C / 266° F	continous intermittent	Aeration tank, anaerobic sludge digestion

Membrane in NBR, PTFE. Coated, Plasma treated, are available on request

DIMENSION

Type	Total height (mm)	Diameter total (mm)	Diameter effective (mm)	Over all height above air distributor (mm)	Perforated area (m ²)	Total weight (kg)
Ecoflex® XL	93	360	300	68	0,075	1,6

Connection 3/4F, 3/4" M, 1" F or NPT thread, available on request



ECOFLEX® XL EXTRA LARGE DISC DIFFUSER SERIES 14" SILICONE OPERATING RANGE

Model	Pore size µm	Range flow rate (Nm ³ /h) min-max	Optimal flow rate (Nm ³ /h)	Standard connection	Max temperature Celsius/ Fahrenheit	Operating procedure	Application
ECOXL50S	60	3-15	9	1" M	230°C / 446° F	continous intermittent	Aeration tank
ECOXL100S	100	4-18	10	1" M	230°C / 446° F	continous intermittent	Aeration tank, anaerobic sludge digestion
ECOXL150S	150	4,5-22	12	1" M	230°C / 446° F	continous intermittent	Aeration tank, anaerobic sludge digestion

Membrane in NBR, PTFE. Coated, Plasma treated, are available on request

DIMENSION

Type	Total height (mm)	Diameter total (mm)	Diameter effective (mm)	Over all height above air distributor (mm)	Perforated area (m ²)	Total weight (kg)
Ecoflex® XL	93	360	300	68	0,075	1,6

Connection 3/4F, 3/4" M, 1" F or NPT thread, available on request

Newair®



XS9"



11"



XL14"

NEWAIR® XS EXTRA SMART SERIES 9" SPECIAL HDPE OPERATING RANGE



Model	Pore size µm	Range flow rate (Nm ³ /h) min-max	Optimal flow rate (Nm ³ /h)	Standard connection	Max temperature Celsius/ Fahrenheit	Operating procedure	Application
NWD XS9"	Fine	1,5-8	4	3/4" M	80°C / 176° F	"continous intermittent"	Aeration tank

DIMENSION

Type	Total height (mm)	Diameter total (mm)	Diameter effective (mm)	Over all height above air distributor (mm)	Perforated area (m ²)	Total weight (kg)
NWD XS9"	93	240	193	68	0,03	0,8

Connection 3/4F, 1"M, 1"F or NPT thread, available on request



NEWAIR® DISC DIFFUSER SERIES 11" OPERATING RANGE

Model	Pore size variable	Range flow rate (Nm ³ /h) min-max	Optimal flow rate (Nm ³ /h)	Standard connection	Max temperature Celsius/ Fahrenheit	Operating procedure	Application
NWD280	fine	4-12	6	1" M	80°C/176°F	continuous intermittent	Aeration tank

DIMENSIONS

Type	Total height (mm)	Diameter total [mm]	Diameter effective [mm]	Over all height above air distributor [mm]	Perforated area [m ²]	Fixed porous body	Total weight [kg]
11 mm	93	280	240	68	0,05	HDPE	1,35

Connection 3/4F, 1" M, 1" F or NPT thread, available on request



NEWAIR® XS EXTRA LARGE SERIES 14" DISC DIFFUSER SPECIAL HDPE OPERATING RANGE

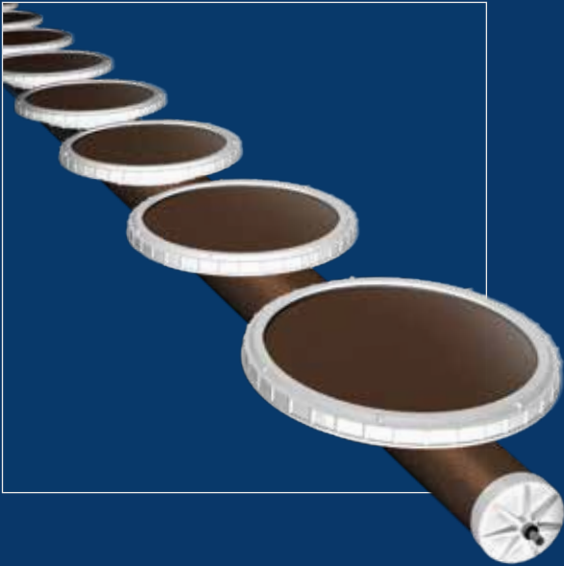
Model	Pore size µm	Range flow rate (Nm ³ /h) min-max	Optimal flow rate (Nm ³ /h)	Standard connection	Max temperature Celsius/ Fahrenheit	Operating procedure	Application
NWD XL14"	Fine	5-18	10	1" M	80°C / 176° F	continuous intermittent	Aeration tank

DIMENSION

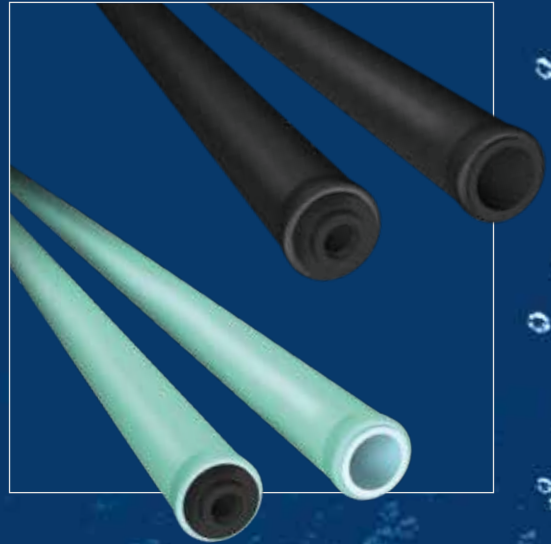
Type	Total height (mm)	Diameter total (mm)	Diameter effective (mm)	Over all height above air distributor (mm)	Perforated area (m ²)	Total weight (kg)
NWD XL14"	93	360	300	68	0,07	1,8

Connection 3/4F, 3/4" M, 1" F or NPT thread, available on request

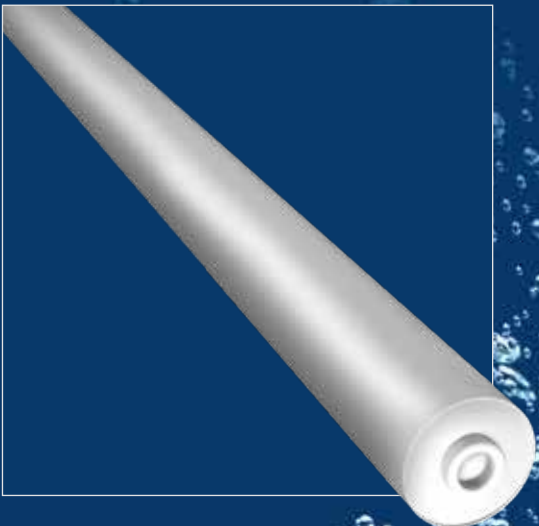
Ecoquarz®



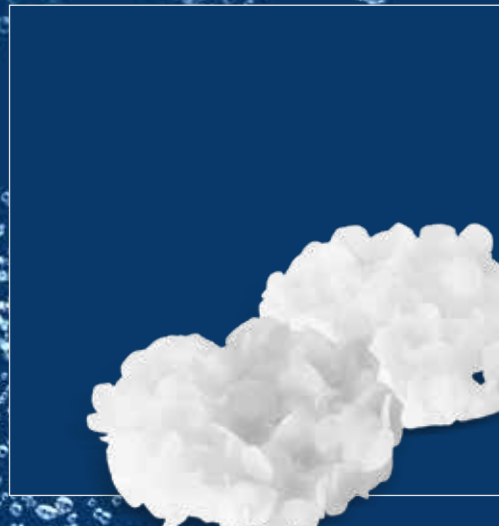
Tuboflex®



Newair®



Newpond®





ECOQUARZ[®] DISC DIFFUSER SERIES, OPERATING RANGE

Model	Pore size μm	Range flow rate (Nm ³ /h) min-max	Optimal flow rate (Nm ³ /h)	Standard Thread connection (1" female or other up on request)	Max temperature Celsius/ Fahrenheit	Operating procedure	Application
EC0250-50	60	3-10	6	1" M	80°C/176°F	continuous	Aeration tank
EC0250-100	100	5-12	8	1" M	80°C/176°F	continuous	Aeration tank
EC0250-250	250	7-15	11	1" M	80°C/176°F	continuous	Grid chamber tank

DIMENSIONS

Type	Total height (mm)	Diameter total [mm]	Diameter effective [mm]	Over all height above air distributor [mm]	Perforated area [m ²]	Total weight [kg]
Ecoquarz Disc	93	280	240	68	0,05	1,5



ECOQUARZ[®] TUBE DIFFUSER, OPERATING RANGE

Model	Pore size μm	Range flow rate (Nm ³ /h x ml) min-max	Optimal flow rate (Nm ³ /h x ml)	Assembling mode	Max temperature Celsius/ Fahrenheit	Operating procedure	Application
EC0500-50	60	5-18	11	Tie rod	80°C/176°F	continuous	Aeration tank
EC0500-100	100	10-25	17	Tie rod	80°C/176°F	continuous	Aeration tank
EC0500-250	250	15-30	22	Tie rod	80°C/176°F	continuous	Grid chamber tank

DIMENSIONS

Type	Perforation length [mm]	Total length [mm]	Tube diameter [mm]	Wall thickness [mm]	Perforated area [m ²]	Total weight [kg]
ECO-501	2 x 250	630	70	15	0,11	4,9
ECO-1001	2 x 500	1130	70	15	0,22	5,7
ECO-1501	2 x 750	1630	70	15	0,33	6,4

TUBOFLEX[®]



TUBOFLEX[®] EPDM TUBE DIFFUSER, OPERATING RANGE

Model	Pore size μm	Range flow rate (Nm ³ /h x ml) min-max	Optimal flow rate (Nm ³ /h x ml)	Standard Thread connection (1" and other up)	Max temperature Celsius/ Fahrenheit	Operating procedure	Application
TBA500D50	60	3-12	7	3/4" F	130°C/266°F	continous intermittent	Aeration tank
TBA500D100	100	5-18	11	3/4" F	130°C/266°F	continous intermittent	Aeration tank, Anaerobic sludge digestion
TBA500D150	150	7-25	15	3/4" F	130°C/266°F	continous intermittent	Anaerobic sludge digestion

DIMENSIONS

Type	Perforating lenght [mm]	Total lenght [mm]	Tube diameter [mm]	Pipe thickness [mm]	Perforated area [m ²]	Total weight [kg]
TBA500	500	550	63	4,7	0,095	0,85
TBA750	750	800	63	4,7	0,146	1,15
TBA1000	1000	1050	63	4,7	0,195	1,4



TUBOFLEX[®] SILICONE TUBE DIFFUSER, OPERATING RANGE

Model	Pore size μm	Range flow rate (Nm ³ /h x ml) min-max	Optimal flow rate (Nm ³ /h x ml)	Standard Thread connection (1" and other up request)	Max temperature Celsius/ Fahrenheit	Operating procedure	Application
TBA500S50	60	3-12	7	3/4" F	230°C/446°F	continous intermittent	Aeration tank
TBA500S100	100	5-18	11	3/4" F	230°C/446°F	continous intermittent	Aeration tank, Anaerobic sludge digestion
TBA500S150	150	7-25	15	3/4" F	230°C/446°F	continous intermittent	Anaerobic sludge digestion

DIMENSIONS

Type	Perforation lenght [mm]	Total lenght [mm]	Tube diameter [mm]	Pipe thickness [mm]	Perforated area [m ²]	Total weight [kg]
TBA500	500	550	63	4,7	0,095	0,85
TBA750	750	800	63	4,7	0,145	1,15
TBA1000	1000	1050	63	4,7	0,195	1,45



NEWAIR® TUBE DIFFUSER, OPERATING RANGE

Model	Pore size variable	Range flow rate (Nm ³ /h x ml) min-max	Optimal flow rate (Nm ³ /h x ml)	Standard Thread connection (3/4" female other up on request)	Max temperature Celsius/ Fahrenheit	Operating procedure	Application
NWA500	fine	6-12	8	3/4" F	80°C/176°F	continous intermittent	Aeration tank
NWA750	fine	6-12	8	3/4" F	80°C/176°F	continous intermittent	Aeration tank
NWA1000	fine	6-12	8	3/4" F	80°C/176°F	continous intermittent	Aeration tank

STANDARD DIMENSIONS

Aerator length [mm]	Total length [mm]	Tube diameter [mm]	Aeration area [m ²]	Adapter	Total weight [g]
500	580	72	0,11	¾ female thread	570
750	830	72	0,17	¾ female thread	760
1000	1080	72	0,23	¾ female thread	950

SPECIAL DIMENSIONS

Possible lengths	100 - 1000 mm
Possible adapter forms	½ , ¾ , 1 , 1 ¼, 2" female thread and on request

NEWPOND® BACTERIA CARRIER MATERIAL

Material	special HDPE
Diameter	20 or 55 mm
specific Surface	500 m ² /m ³
Bulk density	200 g/l
Material density	0.95 kg/l
Max. Temperature	80 °C

All data are approximate data!

Product properties

- large usable surface
- high efficiency
- low abrasion of adherent bacteria due to the stream
- easy cleaning and simple handling
- resistant and pH-neutral
- high chemical resistance





▀▀ **Geotierre** was founded in Bergamo (Italy) in 2007 to produce and develop hi-tech plastic components. With the acquisition of Terre Srl in 2013, the company entered the wastewater treatment market with the development and manufacturing of micro bubble disc and tube diffusers and has since become a leading manufacturer of wastewater treatment products for our prestigious clients. ▀▀

CONTACT

Geoteck-Tierre S.R.L.

Phone +39 035 810296

TeleFax + 39 035 810296

email: info@geotierre.com

Address: Via Prato Pieve 54, 24060 Casazza (BG)

ITALY

Certified



geotierre.com