

light**ir**up

T U R N   O N   T A L E N T

# lightinup

T U R N   O N   T A L E N T



**EVA  
FAMILY**

COLLECTION

opera

COLLECTION

**OREADI**

marble lamps  
Collection  
by **Fabio Rotella**

## PRODUCTS & SERVICES

**LIGHTINUP SRL** offers the designer many different lighting design solutions in order to satisfy every need of style, light and budget. Two of our most sold collections are: the Eva Family collection and our exclusive marble lamps collection, Oreadi. Last but not least, our brand-new production Opera.

**LIGHTINUP SRL** is a manufacturer of "tailor-made decorative lighting" for professional lighting. Supplier of the unique products in the lighting sector dedicated to Hotels, historical and institutional offices. We produce lamps, chandeliers, suspensions, extra-sized fixtures, large and modular compositions which illuminate big open spaces. Our manufacture includes a wide range of finishes chosen from the best available, offering the possibility to satisfy your creative and emotional necessities.

# Founders

*The founding members of LIGHTINUP have gained strong skills in the field of decorative design as a result of important experiences in the field*

---

Over the years, the founders have gained a strong experience in the management of commissioned furniture projects, with qualified stakeholders of international design.

This has led to the development of an innovative interaction model between the design professionals, the production company and the final customer / client.

The know-how of the founding members and the background of the industrial partners participating in the business model guarantee a complete understanding of the needs of the designers and the commitment requirements to which they refer, including the rapid execution of 3D rendering, data sheets and of technical drawings, recognizing the unparalleled value of the three-dimensional proposal and augmented reality in the opportunities for acquiring orders.

**Sergio  
Bevivino**



**Graziano  
Costantino**



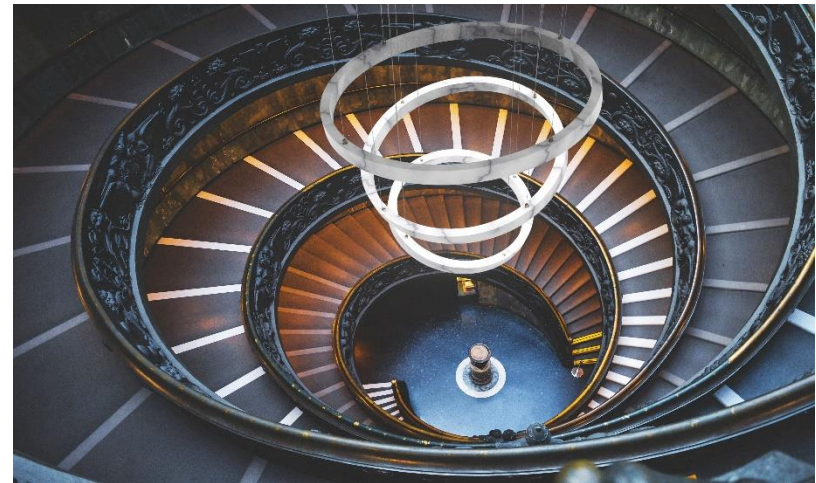
 **EVA  
FAMILY  
COLLECTION**



**opera**  
COLLECTION



**OREADI**  
marble lamps  
Collection  
by **Fabio Rotella**





GSC LIGHTING - [www.gsclight.com](http://www.gsclight.com)

## SOME PROJECTS DELIVERED IN 2019

- WALD HOTEL at BURGENSTOCK Resort Switzerland (by Matteo Thun)
- ALPINE SPA at BURGENSTOCK Resort Switzerland (by MKV Design)
- SIDE HOTEL HAMBURG
- MOVENPICK HOTEL STUTTGART
- INTERCITY HOTEL FRANKFURT
- INTERCITY HOTEL NURNBERG
- COFACE CREDIT INSURANCE MILAN HEADQUARTER
- VAPIANO RESTAURANTS VIENNA BERLIN
- 5 STARS HOTEL & RESIDENCE CAVALLINO JESOLO
- BAVARIA BOARDING HOUSE MUNCHEN
- 3 STARS HOTEL NAUTICO RICCIONE
- HOUSING BANK HEADQUARTER AMMAN JORDAN
- PRIVATE FARMHOUSE DUBAI
- PRIVATE VILLA DOHA
- 5 STARS TAHITI HOTEL JESOLO, VENICE
- MOVENPICK BASEL
- INTERCITY HOTEL PRAGUE
- KUWAIT DIPLOMATIC HOUSING COMPLEX, AMMAN, JORDAN

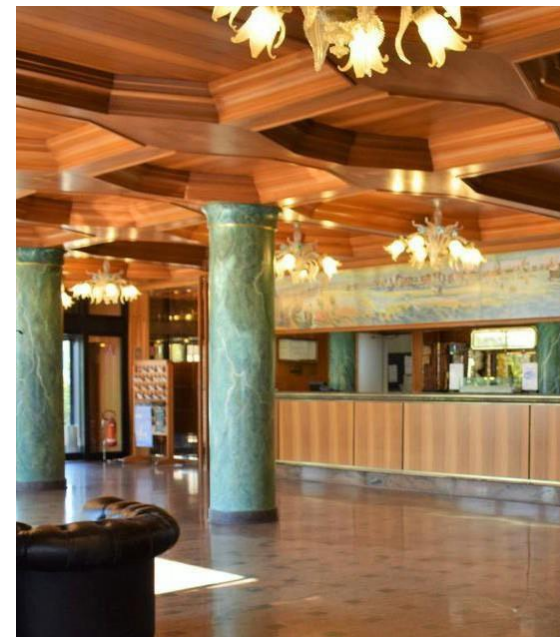
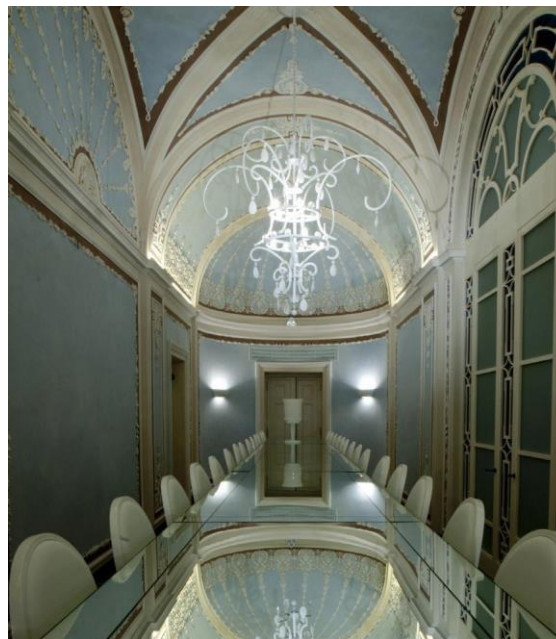
## TRADITION & INNOVATION

**LIGHTINUP SRL** was born from a long historical tradition in the glass industry, with a specialization in the production for large contract works.

The Co-Founder **Sergio Bevino** was in fact Contract Manager in charge of **VEART**, an historical company, founded by Sergio Biliotti and De Santillana.

Meanwhile, in the last twenty years, Sergio Bevino founded **GSC HOTEL LIGHTING**, and thanks to the acquired knowledge, he gave a further impulse to the contract business, specializing in a more complete offer, integrating also prototyping, design and technical-industrial development among other services. We produce all kinds of lighting equipment and systems for the quality hotel sector, the renovation of palaces and historic houses and prestigious institutional offices.

Today we present ourselves as a reality in the Italian marketing-oriented world of lighting, focused on **service and research** in the architectural field. We are specialized in processing different materials, especially the most innovative and functional, satisfying the needs of a "lighting market" which is increasingly demanding. We provide industrial solutions to designers looking for an alternative options rather than the traditional manufacturers ones.

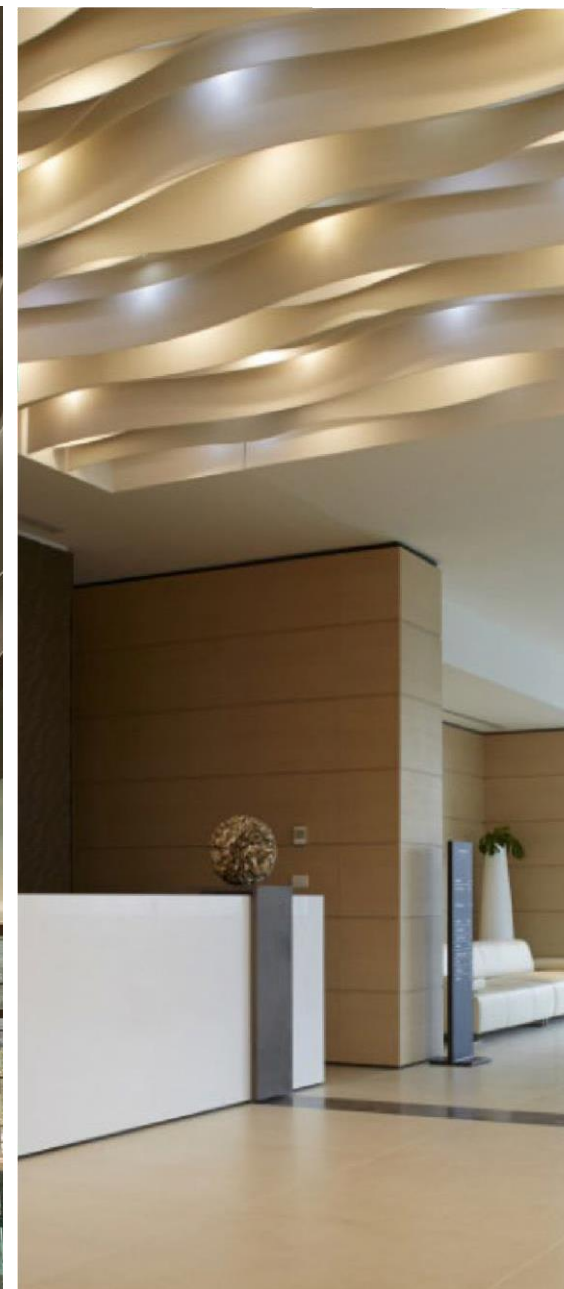


## CORE BUSINESS & COMPETITIVENESS

**LIGHTINUP SRL** is a manufacturer of "tailor-made decorative lighting" for professional lighting. Our manufacture includes a wide range of finishes chosen from the best available, offering the possibility to satisfy your creative and emotional needs. The continuous search for innovative painting solutions has allowed us to select Italian suppliers with high innovative standards over the years. We are able to provide natural, clean, safe paints; guaranteed by numerous tests.

With these paintings systems is now possible to exceed the most famous galvanics finishes in brilliance, offering greater durability and lower production costs; it is also possible to reproduce marbled, sated, brushed, chromed and polished effects.

Lamps, chandeliers, suspensions, extra-sized fixtures; large and modular compositions that can illuminate big open space, assembled through various and complex sub-machining phases carried out internally in our offices.



## THE MATERIALS

### WE OFFER MOST OF THE RAW MATERIALS AVAILABLE ON THE MARKET

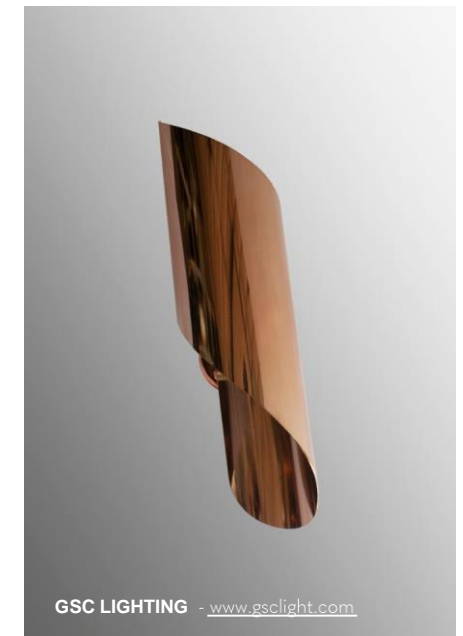
- Brass, stainless steel, aluminum
- Industrial glass sheet
- Hand murano blown-glass
- K9 glass
- Borosilicate
- Crystal
- Marble
- Wood
- Resin
- Ceramic
- Methacrylate & PVC of every thickness
- Natural fabrics with fire treatment
- Technical fabrics with flame treatment
- Micro-perforated metal mesh



## THE PROCESSING

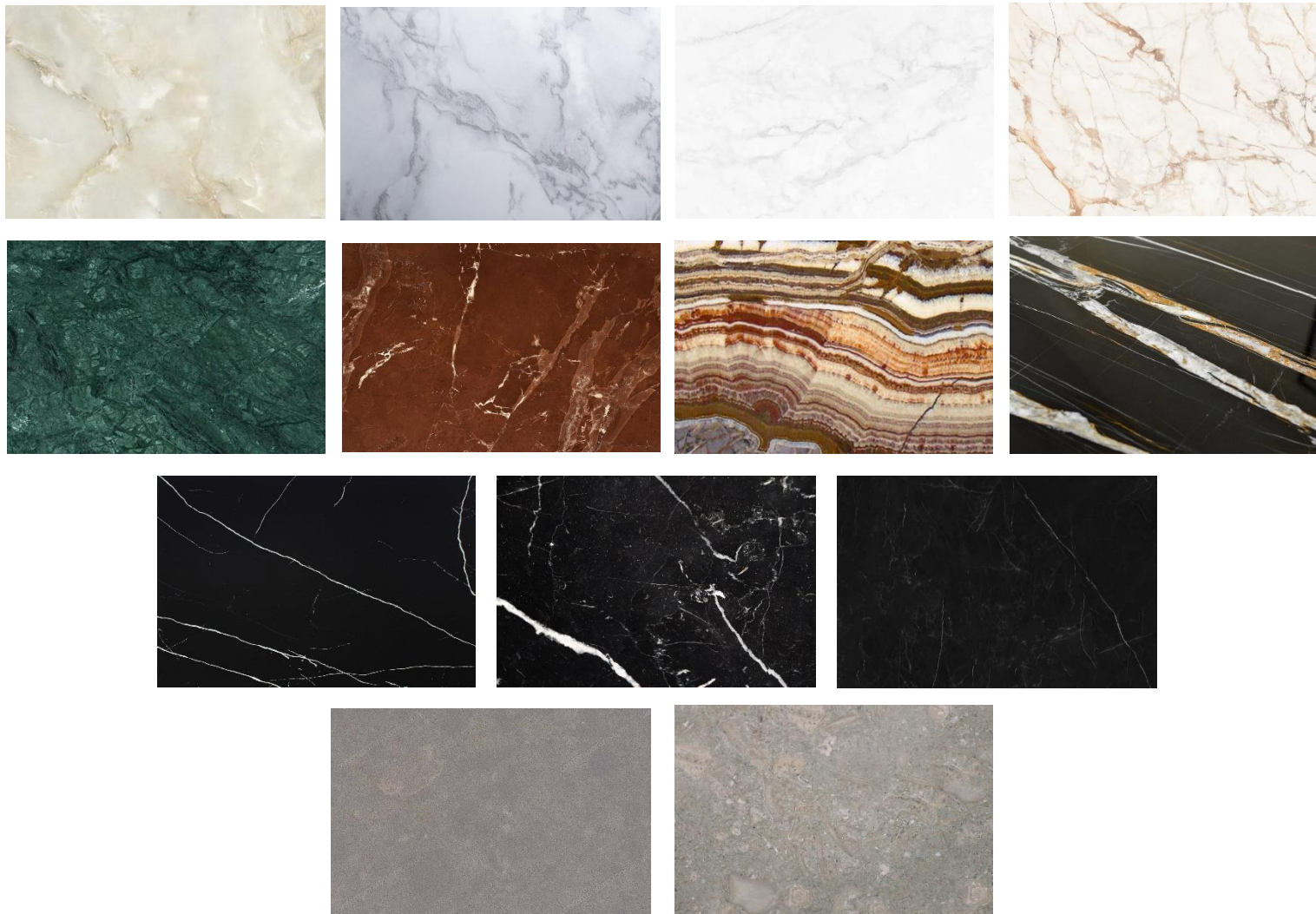
### WORKINGS AND TREATMENTS ABLE TO SATISFY EACH DESIGN INTENT OF THE ARCHITECT

- Flat and 3d printing of fabrics
- Metal laser cut texture
- 3d metal & plastic .
- Cast and brass castings
- Thermoforming of plastic materials
- Powder and liquid painting including polished metal effect
- Shaping of metal rods (also in 5x5 square version)
- Galvanic of every shade
- Glazing
- Anodizing

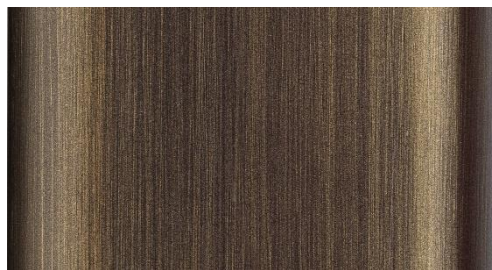




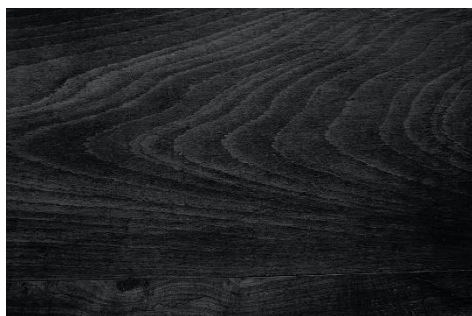
# MARBLES



# METALS



# WOODS



## THE FINAL TOUCH

### COMPLETE THE DEVELOPING OF A LIGHTING FIXTURE

Assembling: structures, frames, components, precision small parts.

Stability supports, following the criteria required in order to guarantee compliance with all requested standards.

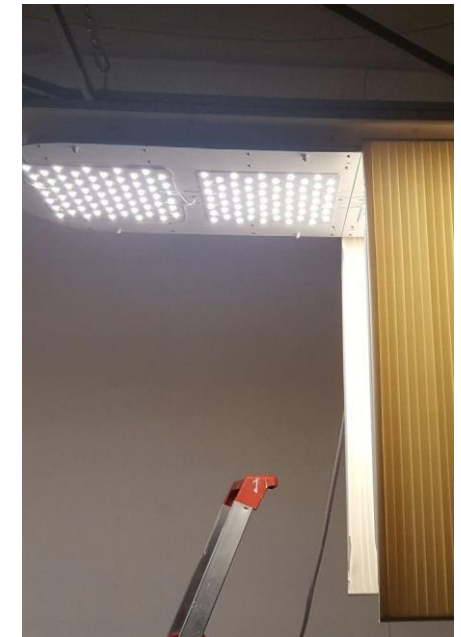
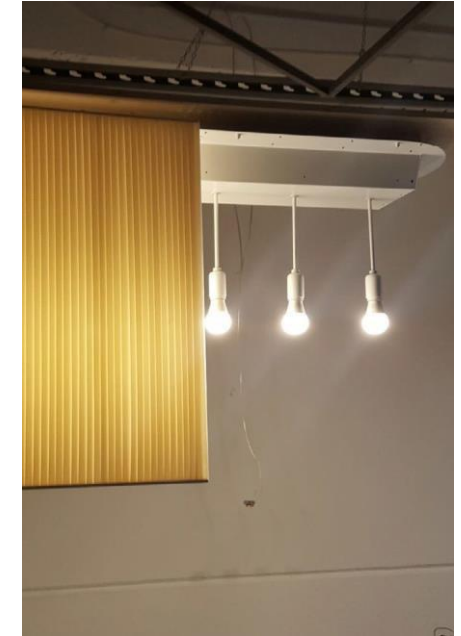
When the lighting bodies take the desired final shape, is the moment of the accurate choice of the light source, capable of transforming a simple furnishing idea in an effective and functional ambient light. This completes a work that is the union of ancient tradition and innovative soul.



## THE LIGHT SOURCE

### VARIOUS KIND OF LIGHTING SOURCES AND ELECTRONIC DRIVERS

- Cob (ChipOnBoard) Led
- Led Module
- Dynamic Led Module
- Silicon led strips
- Extra thin led bands
- Optical fibers
- Scr Electronic Driver
- Triac Electronic Driver
- Driver for Dali
- Multiple Driver systems



## PRIVATE DUBAI FARMHOUSE CHANDELIER



### DESCRIPTION

Geometric chandelier composed of 80 decorative crystal sheet surfaces, enclosed inside bronze polished metal rectangular frames.

### DIMENSIONS

L 1000mm  
W 1000mm  
H 1600mm



## PRIVATE DUBAI FARMHOUSE CHANDELIER

### DESCRIPTION

Custom chandelier composed of 51 circular glass lenses, hooked up on a metallic silver structure.

### DIMENSIONS

Ø 1000MM

H 807 MM



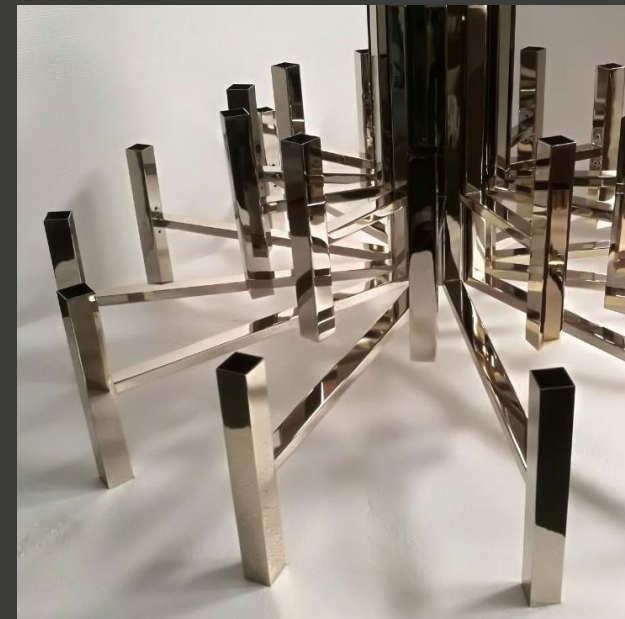
## PRIVATE DUBAI FARMHOUSE CHANDELIER

### DESCRIPTION

Chandelier with 16 square section arms, with square section glass lamp holder. Hooking system composed of a single metal tube and a box fixed to the ceiling.

### DIMENSIONS

Ø 1600 mm



## SOME PROJECTS

Custom Made Extra Size Chandelier with clear glass elements, made of four elliptical-shaped upper chrome rings.

Each one composed of a double crown of 40mm height clear glass elements screwed to the ring.

Dimension Ceiling Plate  
DIA 400mm.  
Dimension Fixture  
DIA 1500mm x H  
4000mm





## SOME PROJECTS

Composition of 3 big fixtures (various heights, Ø 1000mm each one)  
A suspended lamp with ceiling fixed stainless steel plate

Suspended handmade clear glass helix shape elements L 300 mm.

### TOTAL DIMENSIONS

Ø 1000mm

MAX H. 4450mm

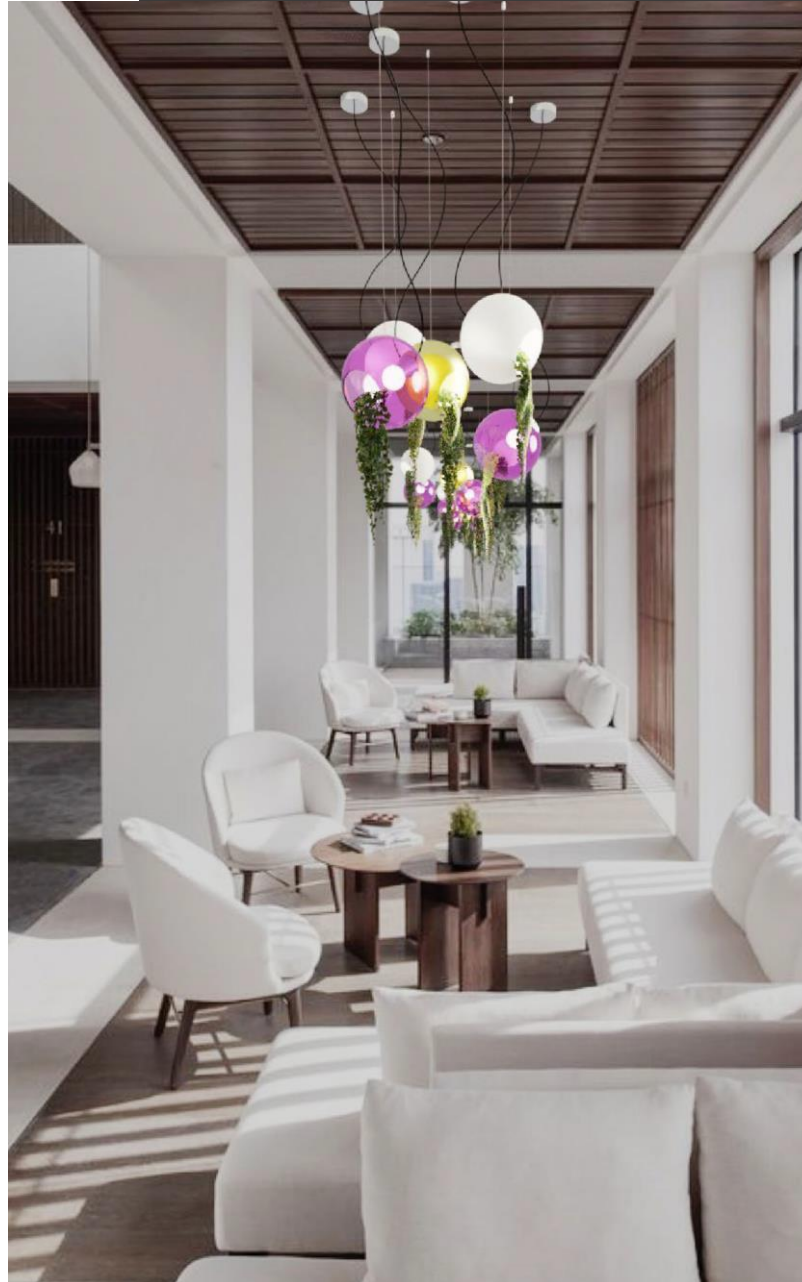
(including height cables)

Light source placed inside the ceiling plates (spotlights and drivers included)



## A PRACTICAL EXAMPLE

- ASSIGNED FROM ARCHITECT IN SEPTEMBER, 2017
- QUOTATION WITHIN 10 DAYS, WITH FIRST SKETCH DRAWINGS INCLUDED
- FIRST COMPLETE RENDERS & DRAWINGS IN JANUARY, 2018
- DRAWINGS REVISED IN DECEMBER 2018
- PURCHASE ORDER IN MAY 2019
- DELIVERY SEPTEMBER 2019



## OTHER PROJECTS FROM OUR PORTFOLIO

ANTONY HOTEL Mestre (VE)

ATA HOTEL Varese

ATA HOTELS RESIDENCE San Donato (MI)

EXEDRA Roma

GRAND HOTEL Verona

GRAND HOTEL BRISTOL Rapallo

GRAND HOTEL PARCO DEI PRINCIPI Roma

GRAND HOTEL VISCONTI PALACE Milano

HOTEL EXCELSIOR PALACE Palermo

HOTEL FEDORA Riccione

HOTEL GRANDE ITALIA Padova

HOTEL IMPERIALE Taormina

HOTEL LEON Verona

HOTEL NAUTICO Riccione

HOTEL RELAIS DES GLACIERS Aosta

HOTEL SANGIUSTO Trieste

HOTEL SAVOY GIUSTO Gardone Riviera (VR)

MAJESTIC Roma

NH HOTEL Catania

NH HOTEL Lecco

NH HOTEL CAVALIERI Pisa

NH HOTEL DE LA GARE Bologna

NH HOTEL IGEA Brescia

NH HOTEL LIGURE Torino

NH HOTEL MACCHIAVELLI Milano

NH HOTEL MARINA Genova

NH HOTEL Napoli

NH HOTEL PLAZA Genova

NH HOTEL PRESIDENT Milano

NH HOTEL TOURING Milano

NH HOTEL TOURING Torino

NH HOTEL TRIESTE Trieste

NH EXCELSIOR SIENA Siena

NH MANTEGNA Padova

STARHOTEL EXCELSIOR Bologna

STARHOTEL PRESIDENT Genova

STARHOTEL ROSA Milano

STARHOTEL TOURIST Milano

SUITE HOTEL NETTUNO Sestri Levante

UNA HOTEL LODI Lodi

UNA HOTEL MALPENSA Milano

UNA HOTEL NAPOLI Napoli

UNA HOTEL ROMA Roma

UNA PALACE HOTEL Catania

HOLIDAY INN Piacenza

HOLIDAY INN Pisa

HOLIDAY INN Bologna

ALPINE SPA BURGENSTOCK

SELECTION Obbuzgen, Switzerland

BOSCOLO HOTEL Budapest

EMBASSY OF SWAZILAND Bruxelles

GRAND HOTEL EDEN Lugano

HOTEL CARL IV Praga

HOUSING BANK Amman, Jordan

NH HOTEL ATLANTA Amsterdam

NH HOTEL CARLTON Amsterdam

PALAIS DE JUSTICE Paris

WALDHOTEL BURGENSTOCK

SELECTION Obbuzgen, Switzerland

light**ir**up

T U R N   O N   T A L E N T

**Headquarter & Production**

Via Nona Strada, 23 IT35123 Padova (PD)