

A close-up photograph of a CNC machine in operation. The machine's tool is cutting through a metal plate, creating a bright, intense light at the point of contact. Numerous sparks are being ejected from the cut, creating a dynamic and industrial scene. The background is dark, highlighting the machine and the sparks. The text "Manufacturing Overview" is overlaid in white, centered horizontally across the image.

Manufacturing Overview

Materials Offered

- Brass, Stainless Steel, Aluminum
- Industrial Glass Sheet
- Hand Murano Blown-Glass
- Murano Blown-Glass with Mould
- K9 Glass
- Borosilicate
- Crystal
- Marble
- Wood
- Corean
- Resin
- Ceramic
- Methacrylate & PVC of every thickness
- Natural Fabrics with fire treatment
- Technical Fabrics with flame treatment
- Micro-perforated metal mesh

Workings and treatments in order to satisfy each design intent

- Flat and 3D printing of fabrics
- Metal Laser Cut texture
- 3D Metal & Plastic
- Cast and brass castings
- Thermoforming of plastic materials
- Powder and liquid painting including polished metal effect
- Shaping of metal rods also in 5x5 square version
- Galvanic of every shade
- Glazing
- Anodizing

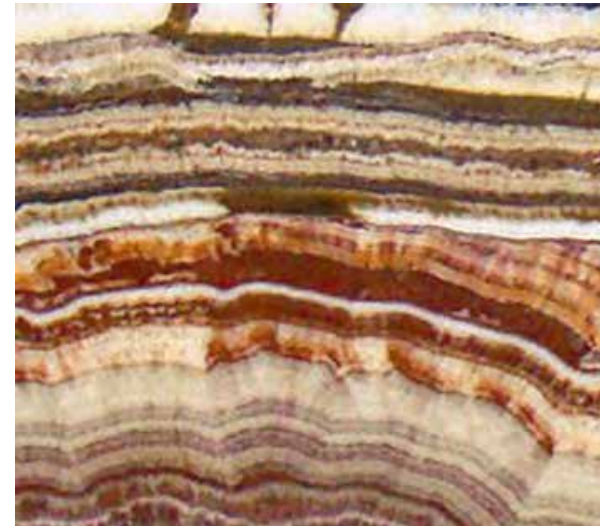


Marbles

Marbles



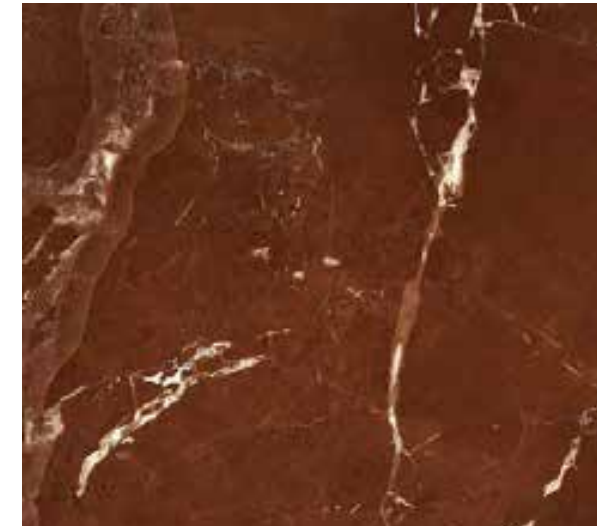
White Carrara Marble



Ducado Onyx



Calacatta Gold



Collemandina Red



New Marquina



Green Guatemala



Fossil Limestone



Lagos Blue



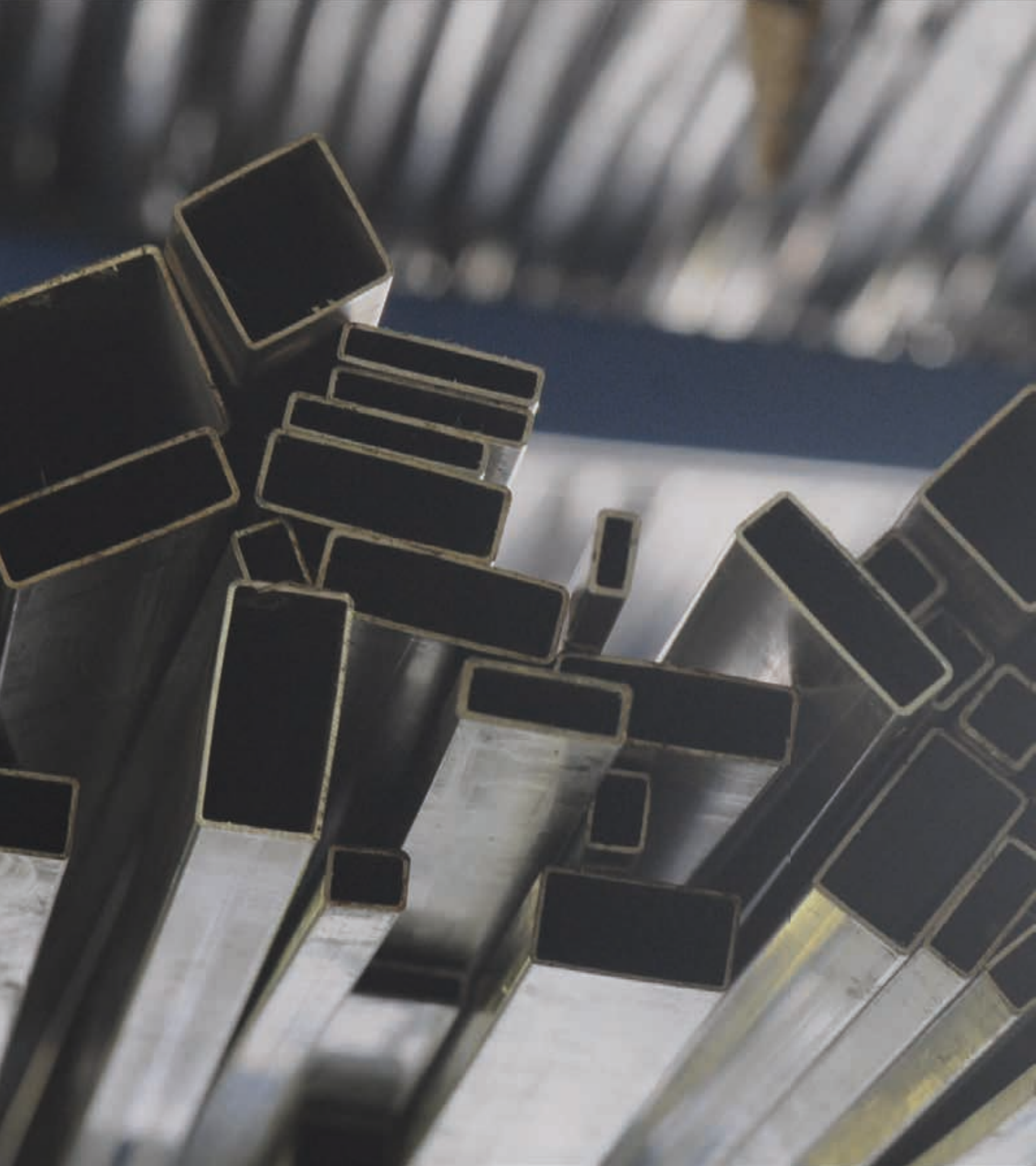
White Onyx Marble



Black Marble







Metals

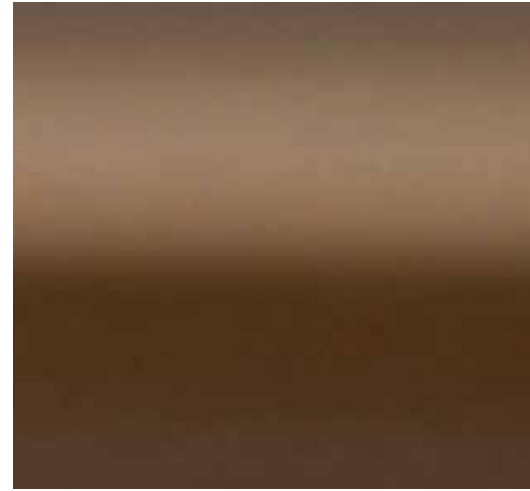
Metals



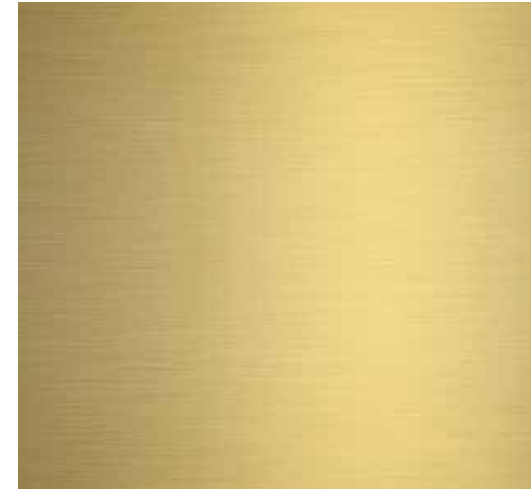
Polished Copper



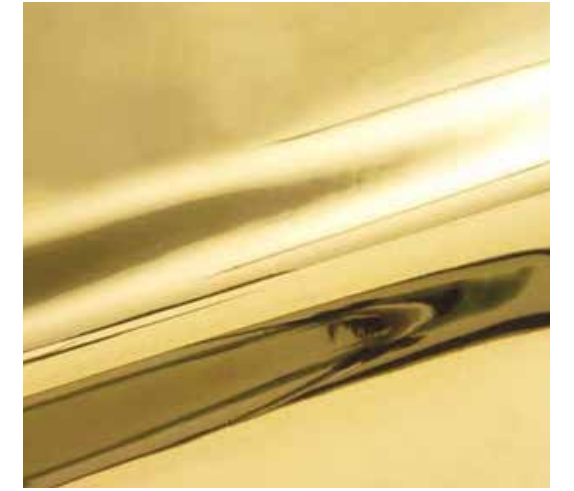
Copper



Anodic Bronze



Brushed Gold



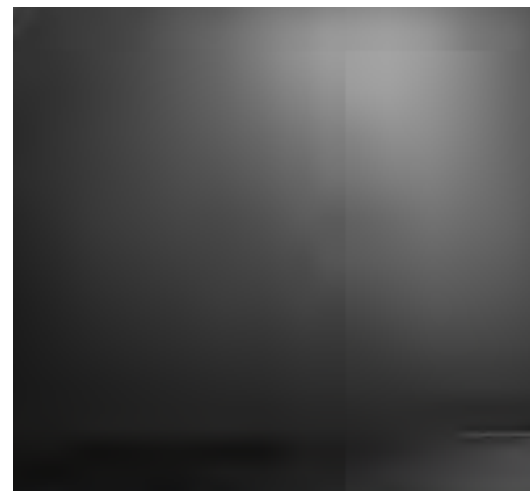
Polished Gold



Polished Brass



Satin Brass



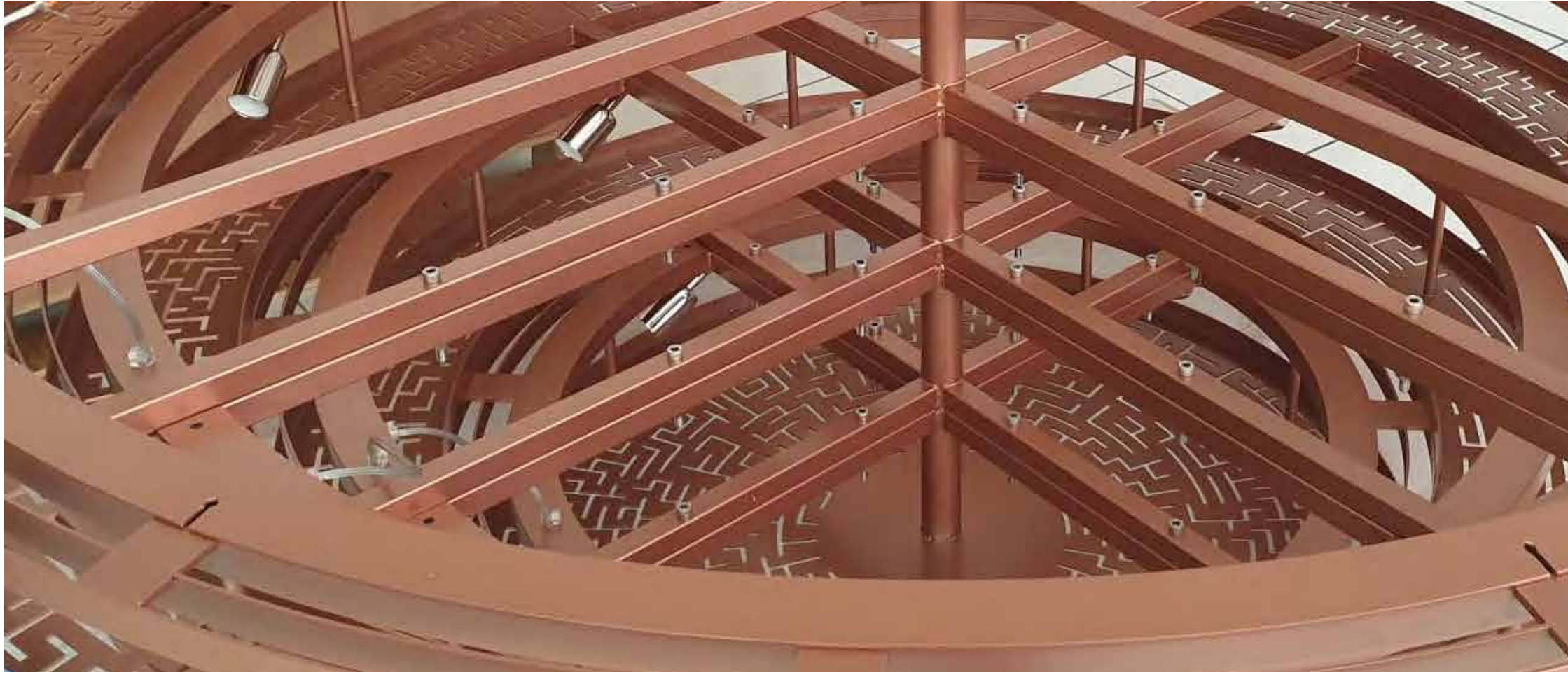
Black Opal Metal Gloss



Polished Brass



Brushed Brass





Woods

Woods



Light Oak



Venghé



Oak



Black Wood



White Wood



Dark Oak



Canaletto Walnut

Kind of lighting sources and electronic drivers

- Cob (ChipOnBoard) Led
- Led Module
- Dynamic Led Module
- Silicon led strips
- Extra thin led bands
- Optical fibers
- Scr Electronic Driver
- Triac Electronic Driver
- Driver for Dali
- Multiple Driver systems



Hi-responsive development

PHASE

Request

Quotation

Technical sheet

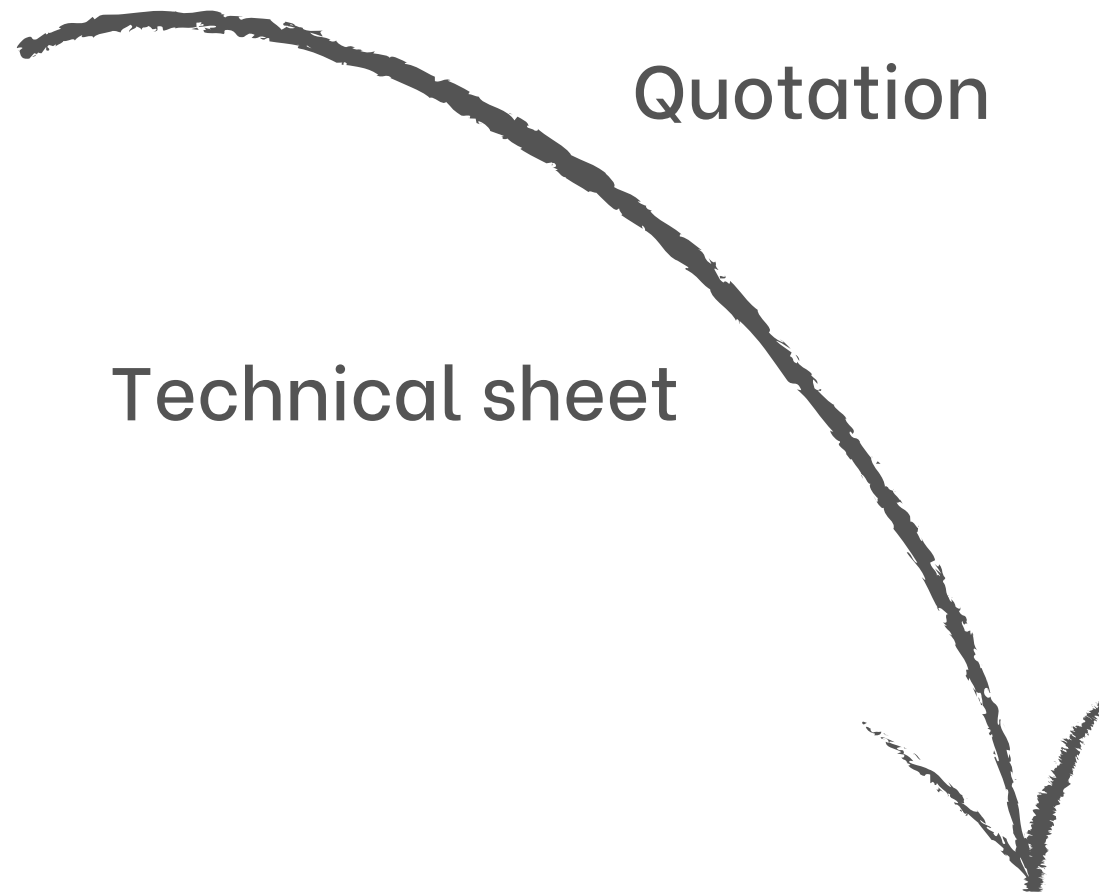
Budget Optimization

TIMELINE

Start

Within 14 days

Within 21 days



Drawing Process

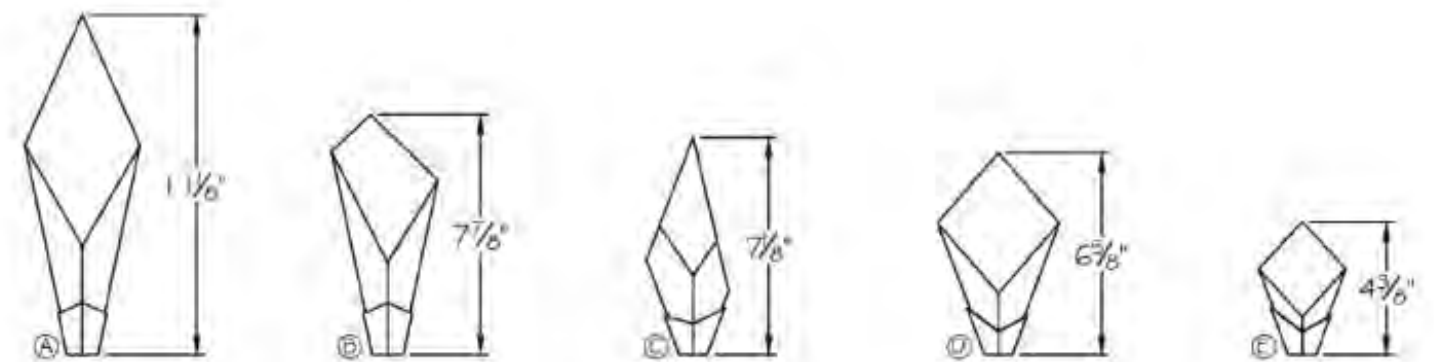
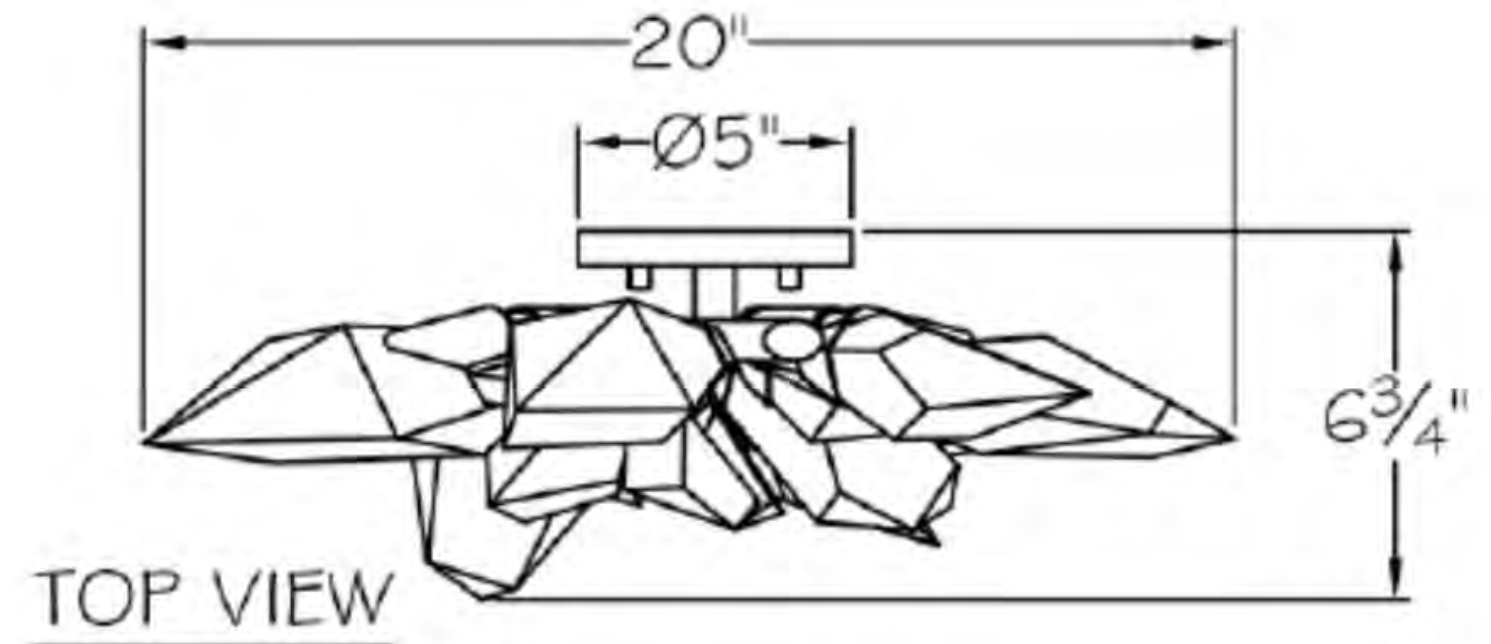
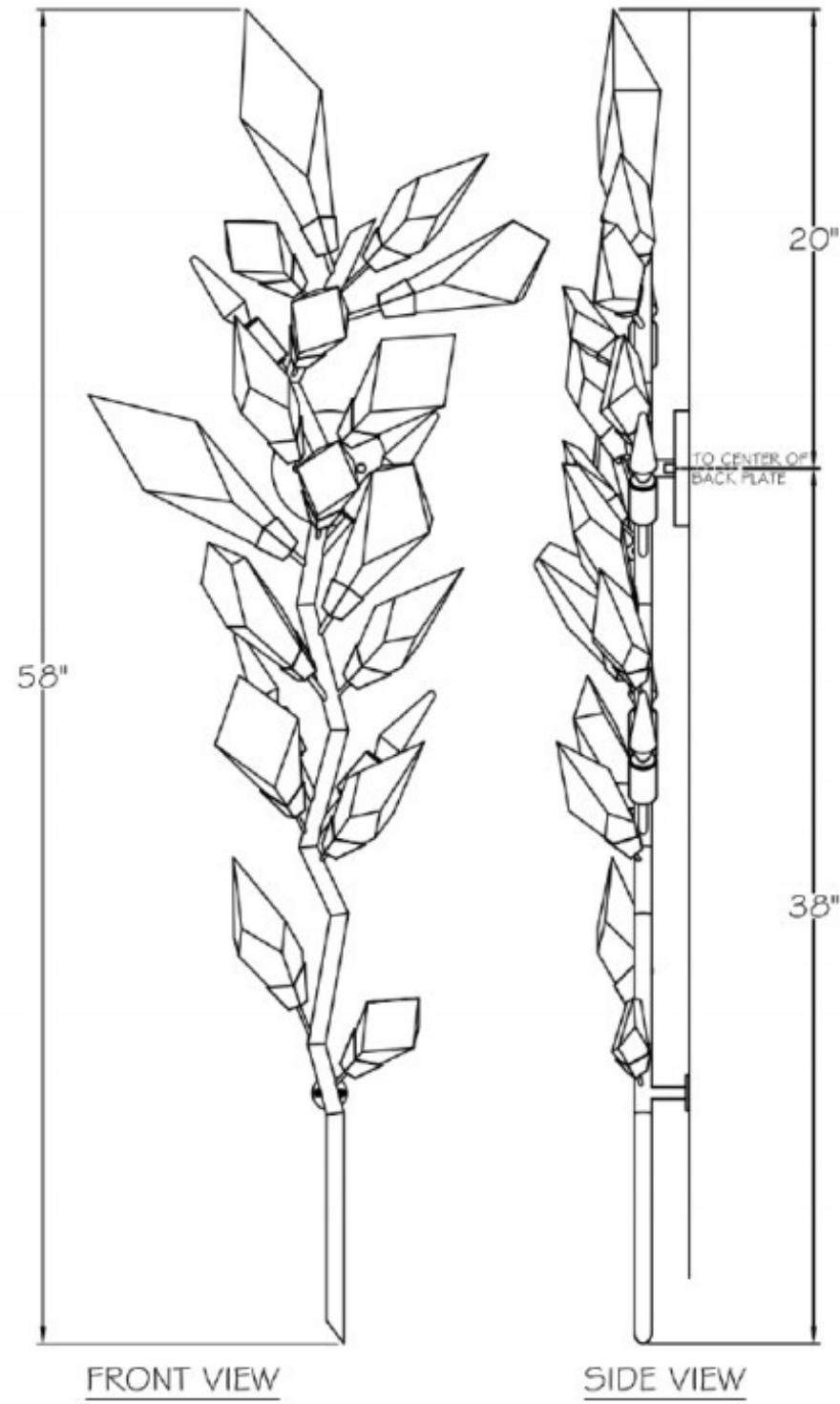
CH101.1-EXPLOSE

DATE / DATA:	PROJECT CUSTOMER/PROGETTO-CLIENTE:	EXECUTED BY / DISEGNATO DA:	VERIFIED BY / VERIFICATO DA:
01/02/2021	WISOR TREASURY	MARIA OSBEO	SERGIO BEVIVINO
FILE:	CODE / CODICE:	ARTICLE / ARTICOLO:	QUANTITY:
CH101.1-EXPLOSE	LC2052-20	CHANELER	1
SCALE / SCALA:	MATERIAL / MATERIALE:	FINISHING / FINITURA:	WEIGHT / PESO:
1:10	METAL/GLASS	GOLD LACQUER COLOUR	Kg
REVISION / REVISIONE:	DESCRIPTION / DESCRIZIONE:	NOTES:	GENERAL DIMENSIONS ± 0.25
REV.01 DATA: 04 NOVEMBRE 2020			

CH101.1-ASSEMBLY

DATE / DATA:	PROJECT CUSTOMER/PROGETTO-CLIENTE:	EXECUTED BY / DISEGNATO DA:	VERIFIED BY / VERIFICATO DA:
01/02/2021	WISOR TREASURY	MARIA OSBEO	SERGIO BEVIVINO
FILE:	CODE / CODICE:	ARTICLE / ARTICOLO:	QUANTITY:
CH101.1-ASSEMBLY	LC2052-20	CHANELER	1
SCALE / SCALA:	MATERIAL / MATERIALE:	FINISHING / FINITURA:	WEIGHT / PESO:
1:15	METAL/GLASS	GOLD LACQUER COLOUR	Kg
REVISION / REVISIONE:	DESCRIPTION / DESCRIZIONE:	NOTES:	GENERAL DIMENSIONS ± 0.25
REV.01 DATA: 04 NOVEMBRE 2020			


Drawing Process



From drawings to production




Drawing Process



BIRDS COLORS:
GOLD
SILVER
BRONZE
(AS PER SAMPLE)

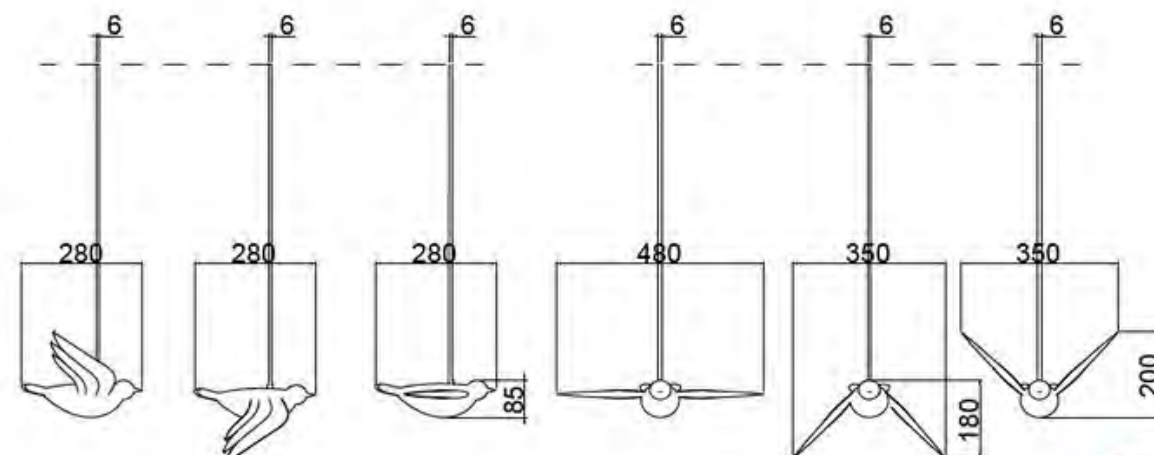
PANTONE 108
PANTONE PMS 381
(TO BE SAMPLED)




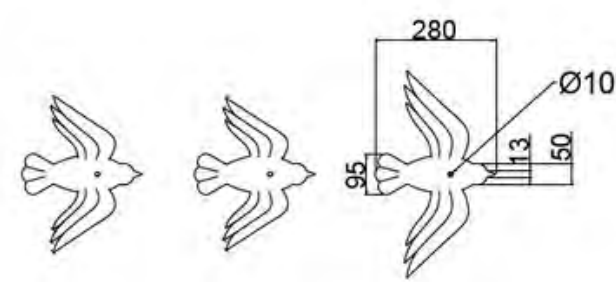
ELEMENT	QUANTITY	MATERIAL	PROCESSING
BIRDS	180	BLOWN GLASS	HAND MADE
FIXING SYSTEM	180	STEEL	TURNING
SUPPORT STICK	180	POLISHED NICKEL	EXTRUSION

CH010-ASSEMBLY

	DATE / DATA: 12 FEBBRAIO 2021	PROJECT-CUSTOMER/PROGETTO-CLIENTE: INTERIOR TREASURE	EXECUTED BY / DISEGNATO DA: ANTONELLA ZACCARELLI	VERIFIED BY / VERIFICATO DA: SERGIO BEVVINO
	FILE: LC2052-5-ASSEMBLY-R1	CODE / CODICE: LC2052-5-R1	ARTICLE / ARTICOLO: CHANDELIER	QUANTITY: 1
	SCALE SCALA	MATERIAL / MATERIALE: BLOWN GLASS	FINISHING / FINITURA	WEIGHT: 216 KG
		DESCRIPTION / DESCRIZIONE:	<small>THIS DRAWING IS THE PROPERTY OF GSC SRL AND THEREFORE ITS REPRODUCTION AND TRANSFER TO THIRD PARTIES IS STRICTLY PROHIBITED</small>	
DATE: 08 SETTEMBRE 2020		NOTES: - - -		General tolerances: ± 0.





FRONTAL VIEW **LATERAL VIEW**

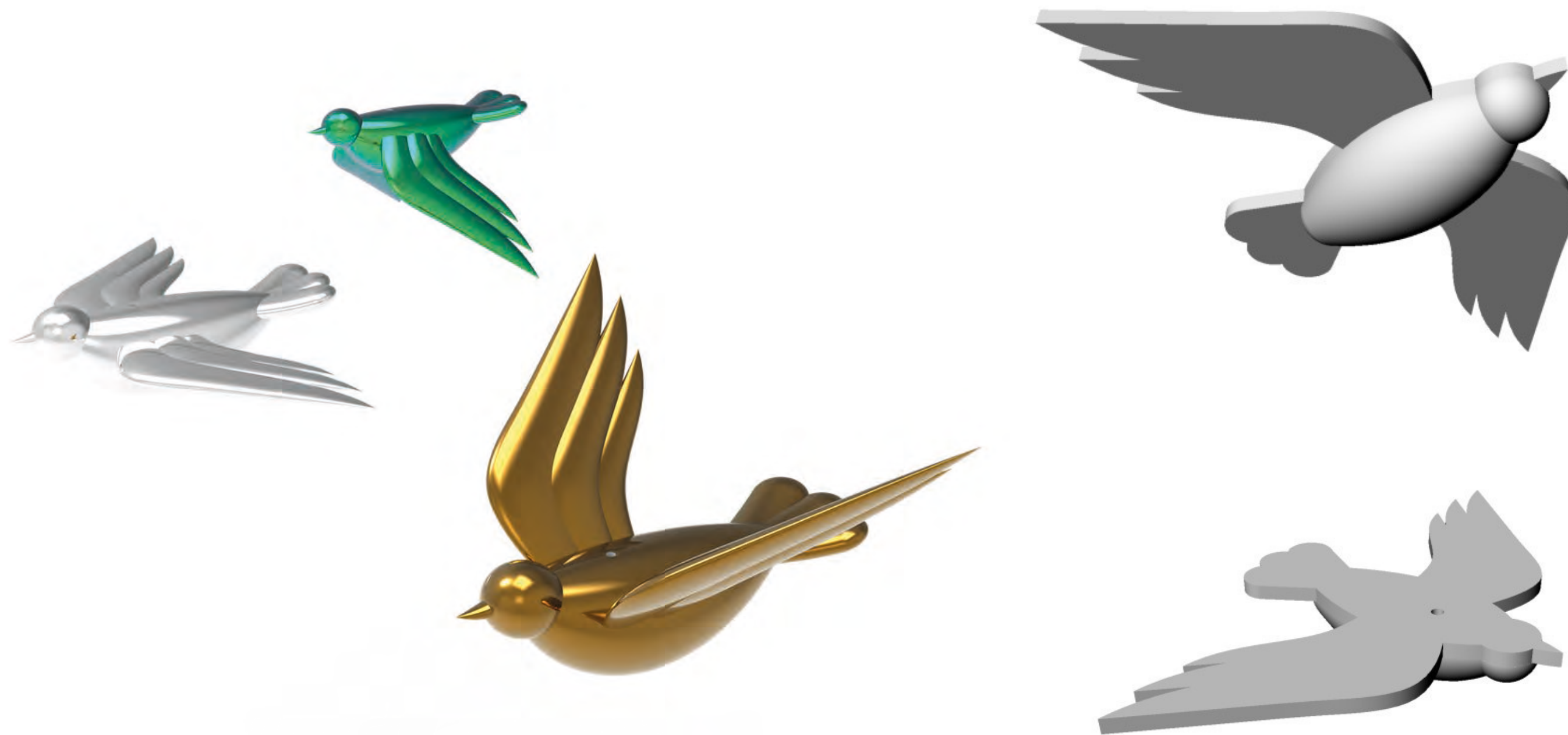



TOP VIEW

CH010-BIRDS

	DATE / DATA: 12 FEBBRAIO 2021	PROJECT-CUSTOMER/PROGETTO-CLIENTE: INTERIOR TREASURE	EXECUTED BY / DISEGNATO DA: ANTONELLA ZACCARELLI	VERIFIED BY / VERIFICATO DA: SERGIO BEVVINO
	FILE: LC2052-5-ASSEMBLY-R1	CODE / CODICE: LC2052-5-R1	ARTICLE / ARTICOLO: CHANDELIER	QUANTITY: 1
	SCALE SCALA	MATERIAL / MATERIALE: BLOWN GLASS	FINISHING / FINITURA	WEIGHT:
		DESCRIPTION / DESCRIZIONE:	<small>THIS DRAWING IS THE PROPERTY OF GSC SRL AND THEREFORE ITS REPRODUCTION AND TRANSFER TO THIRD PARTIES IS STRICTLY PROHIBITED</small>	
DATE: 08 SETTEMBRE 2020		NOTES: - - -		General tolerances: ± 0.

Drawing Process



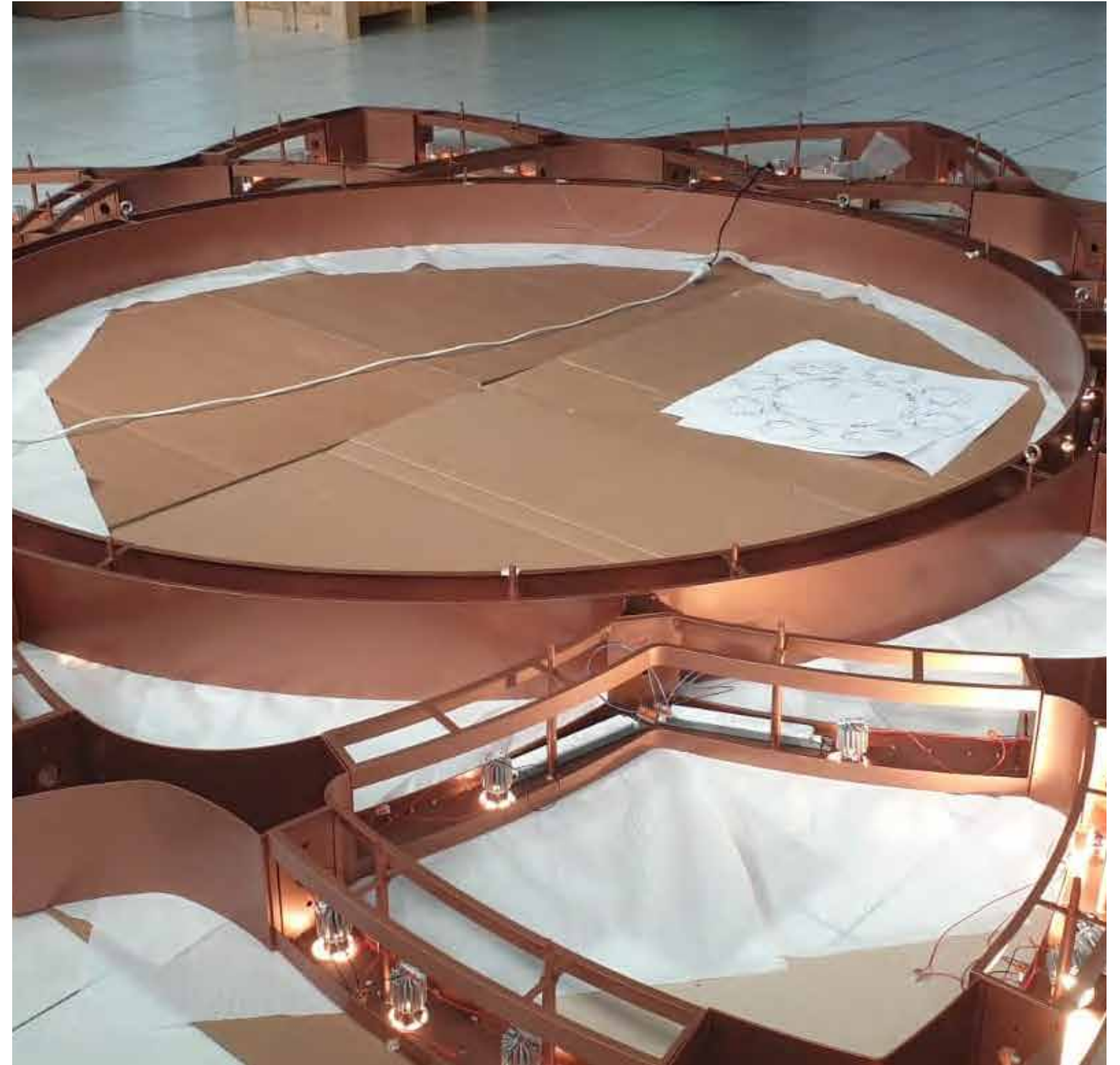
From drawings to production



Assembly Process



Assembly Process



Wiring and Lighting Systems

A

FRONT VIEW
Dimensions: 1371.00, 180.00, 80.00, 60.00, 50.00

BOTTOM VIEW
Dimensions: 6739.17, 80.00, Ø2800.00

CIRCUIT No. 1 - SPOTLIGHT

ELECTRICAL DIAGRAM

AC VOLTAGE SOURCE
240V / 50-60Hz

GROUND

SWITCH DOWNSTREAM (DALI DIMMER SYSTEM)

AC
DC

LED 5W (X10) LED 5 W/12V

TOTAL WATT: 50W

CH013-ASSEMBLY

CENTRAL STRUCTURE

LED SPOTLIGHT

CENTRAL STRUCTURE:
(1) SECTION: (10x) SPOT LIGHT 3W/12V
TOTAL W/SECTION: 50W
30W/SECTION + (X8) SECTIONS: 240W TOTAL

MAXI JOLLY US DALI 60

(X8) DRIVER TCI (X) SECTION
MAXI JOLLY US DALI 60 - 80W
Direct current dimmable electronic drivers with DIP-SWITCH

DCC DALI INTERFACE
(X8) DRIVER TCI / TOTAL

SYSTEM CONNECTION
Jst Connector 2

R017-0.75

SPOTLIGHT LED 5W/12V
150 mA 500 LM 3000K
DIMMABLE BEAM 40°

Manufacturer: OSRAM
Product dimensions: 49mm x 49mm x 62mm
Manufacturer reference: YDQ-2001029NCG
Shape: Round
Material: Aluminium
Voltage: 240 Vdc
Type of bulb: LED
Energy class: ampoule class (EU) A+
Luminous flux: 500 lm
Power: 3 watts
Characteristics of the Dimmable bulb:
Color rendering index: 80.00
Average duration: 50000 Hours
Item weight: 80 g

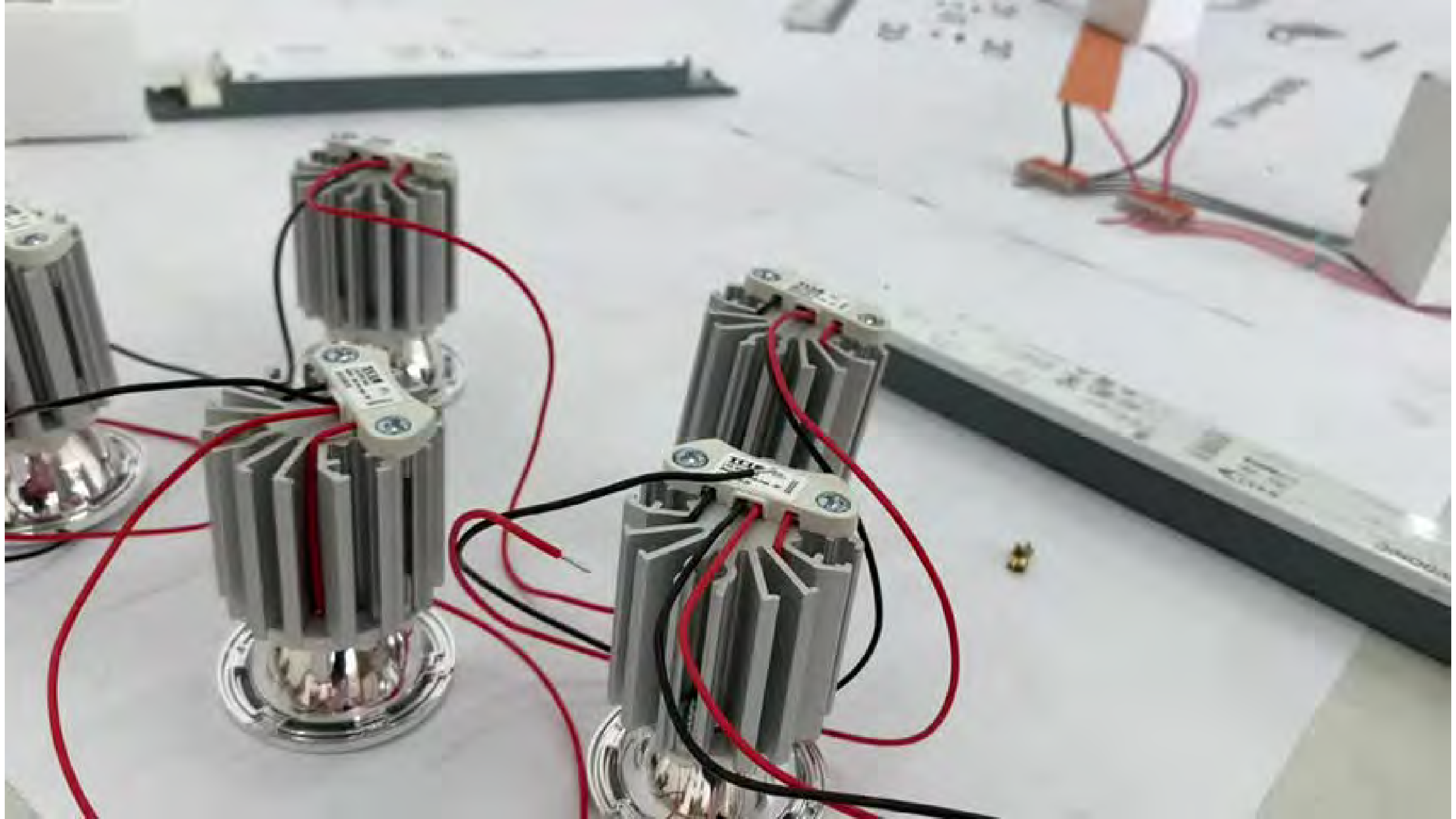
Insulation type: PVC
Operating temperature: T 90 ° C
Conductor type: RED COPPER
Operating voltage: 30X300 V
45X750 V (for the section 1.50 mm²)
Flexible cable nomenclature: HD092-K
HD092-K (for section 1.50 mm²)
Rigid cable nomenclature: HD092-U
HD092-U (for section 1.50 mm²)
Customizable marks: (EMMEQU - HAR)
Compliant with standards: EN 50525-3-31
Complies with the requirements of the directive: 2014/53/EU

BLOWN GLASS ELEMENTS	97 PZ
LED G9	113 PZ
SPOTLIGHT LED	10 PZ
METAL TUBES	306 PZ

ELECTRICAL CABLING AS PER CE REGULATION.

 WWW.GSC.LIGHTING.COM	DATE / DATA: 28 DICEMBRE 2020	PROJECT-CUSTOMER/PROGETTO-CLIENTE: INTERIOR TREASURES	EXECUTED BY / DISEGNATO DA: MAIRA GHIRICCO	VERIFIED BY / VERIFICATO DA: SERGIO BEVIVINO
	FILE: CH013-ASSEMBLY	CODE / CODICE: LC2052-8	ARTICLE / ARTICOLO: CHANDELIER	QUANTITY
	SCALE: 1:20	SHEET SIDE / FORMATO / FOLIO: A3	MATERIAL / MATERIALE: METAL/GLASS	FINISHING / FINITURA: COPPER
REV.01 DATA: 04 NOVEMBRE 2020		NOTES: --		
THIS DRAWING IS THE PROPERTY OF GSC S.p.A. AND THEREFORE ITS REPRODUCTION AND TRANSFER TO THIRD PARTIES IS STRICTLY PROHIBITED				

Wiring and Lighting Systems



Wiring and Lighting Systems



Wiring and Lighting Systems





QATAR

AN ITEM BY GSC LIGHTING BRAND AS
MANAGING AND FACTORY
Villa K - Qatar



QATAR

AN ITEM BY GSC HOTEL LIGHTING
BRANDAS AS MANAGING AND FACTORY
Villa W 10 – Doha, Qatar



DOHA

ITEMS BY GSC HOTEL LIGHTING
BRANDAS AS MANAGING AND FACTORY
Al Najada Hotel



QATAR

AN ITEM BY GSC HOTEL LIGHTING
BRANDAS AS MANAGING AND FACTORY
AWR