

# pijama



SPRING SUMMER 2023

Every Pijama soft case and bag is composed of three different layers of materials: smooth polyester jersey inside, neoprene in-between and the external fabric that gives the final look.

Each new material is approached with curiosity and a genuine passion for crazy experimentation, and it's made in Italy since 2006.

This summer, beside our favorite continuative fabric selection, we're adding a special "dead stock" collection made of 3 fine sartorial Italian fabrics, sustainable and in limited edition, available until out of stock.

With this new deadstock collection we want to go back to 2006 when we started in the best way, by using 100% dead stock fabrics in the first collections, and respond to the constant trend of being more sustainable.

A super colourful variation of the Prisma pattern is the other new collection, a truly optical vision in red and blue.

Bags, backpacks, laptop sleeves and all the accessories you need to carry and protect your favorite things, but also accessories for your home.

Join us in our journey through colours and shapes.



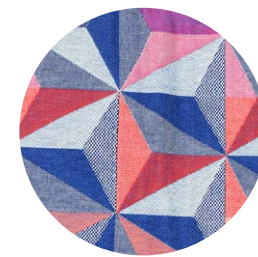
## PRISMA COLOUR

COTTON + POLYESTER & NEOPRENE

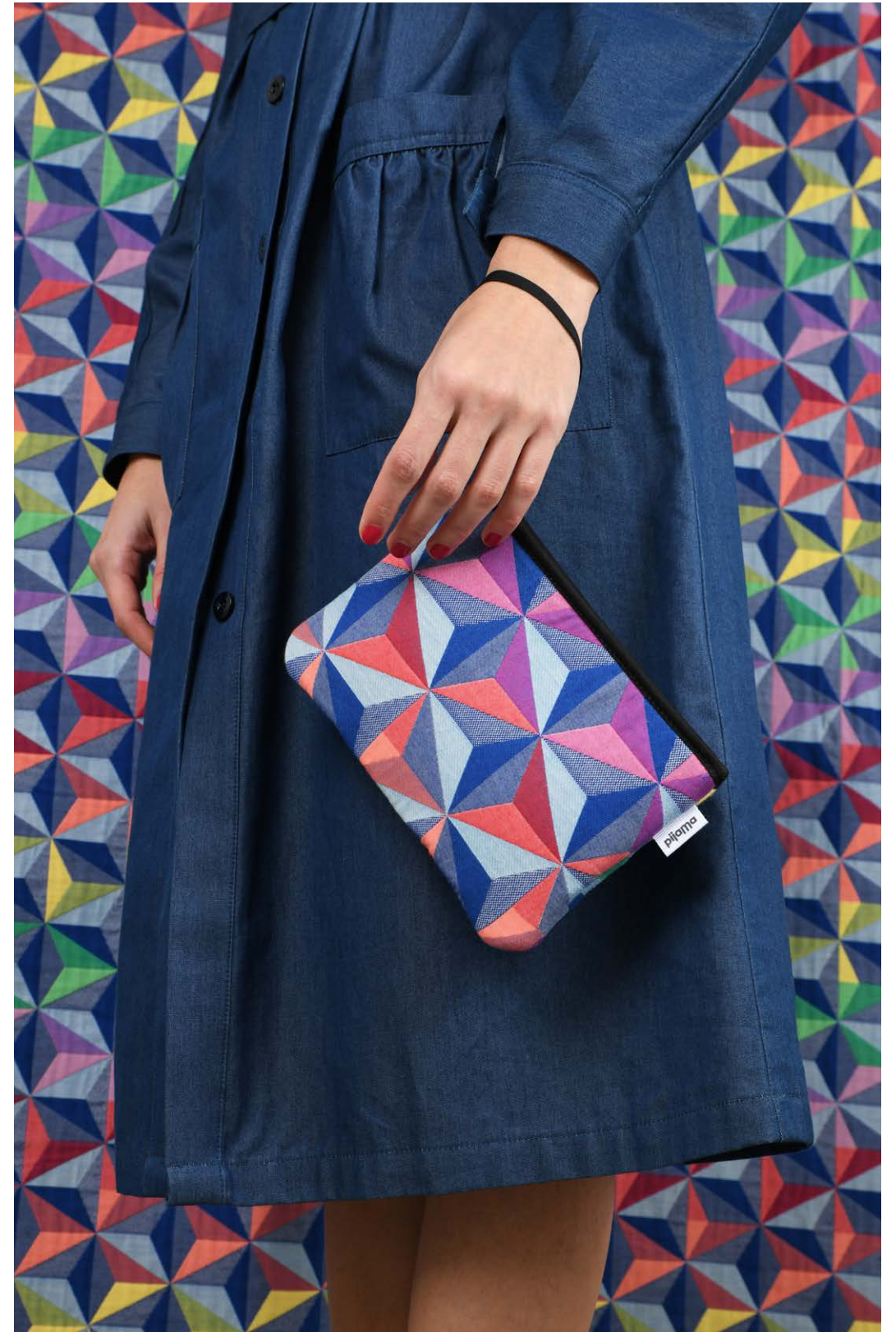
The Prisma pattern is one of our iconic original designs, launched a few years ago in the golden lurex version, this season turns super colourful with two variations: blue or red, and all the colours of the rainbow. It is probably the most precious fabric of our collection, having so many different colour yarns, expertly weaved to form the optical geometry of a pyramid.



PRISMA RED  
/ PRRD /

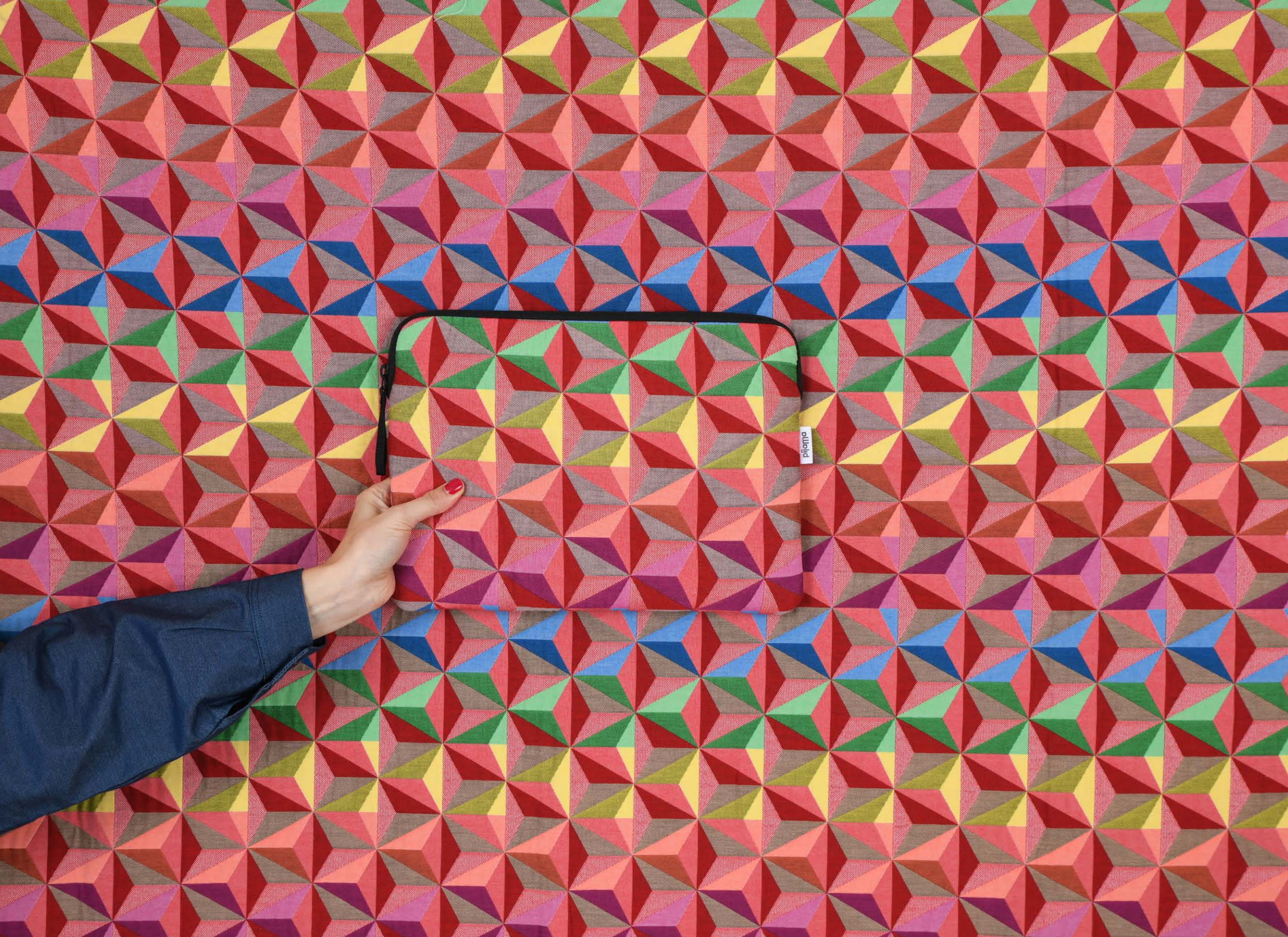


PRISMA BLUE  
/ PRBL /







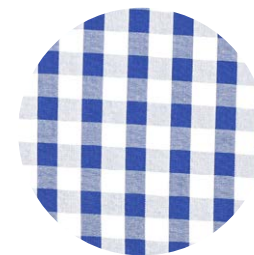




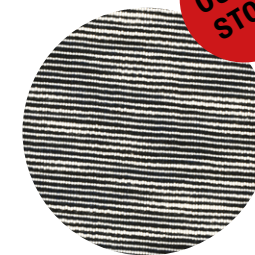
## DEAD STOCK

COTTON RELIEVED / COTTON & NEOPRENE

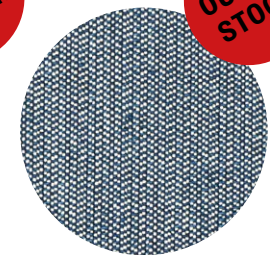
This summer we're adding a special "dead stock" collection, available until out of stock, made out of 3 sartorial Italian fine fabrics, sustainable and in limited edition. With this new deadstock collection we want to go back to 2006 when we started in the best way, by using 100% dead stock fabrics in the first collections, and respond to the constant trend of being more sustainable.



DEAD STOCK  
/ DS01 /



DEAD STOCK  
/ DS02 /



DEAD STOCK  
/ DS05 /

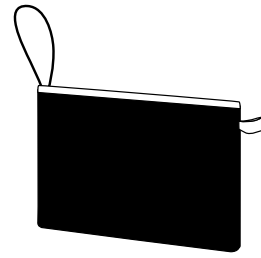
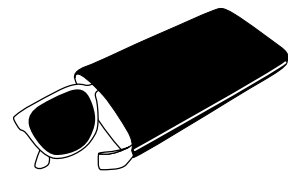


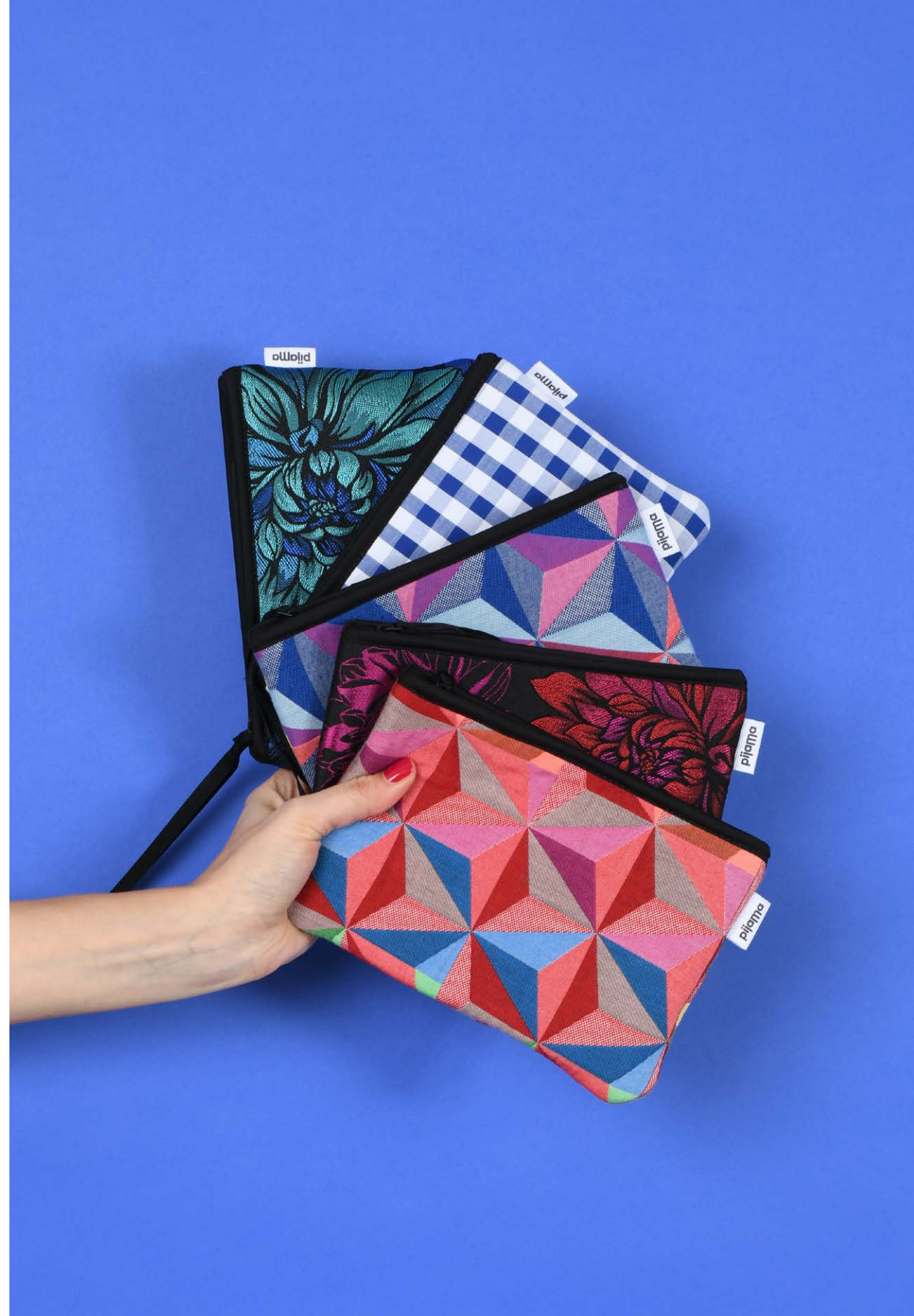




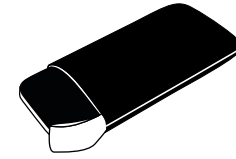
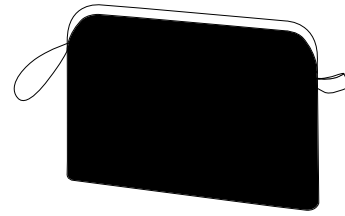
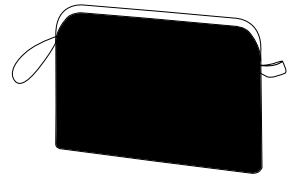


# LIFESTYLE ACCESSORIES





# DEVICES

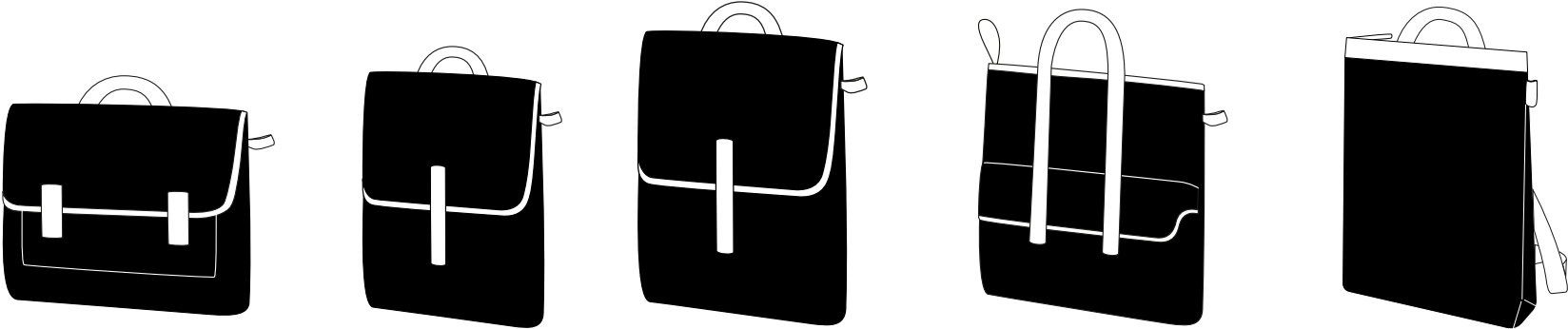








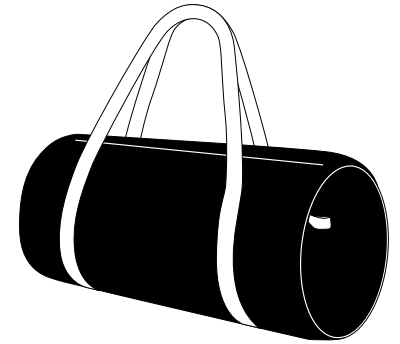
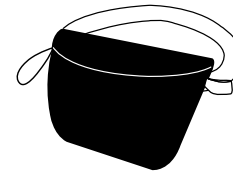
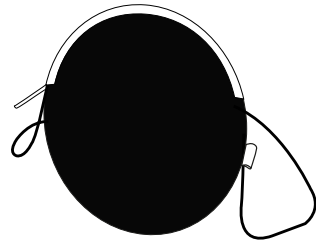
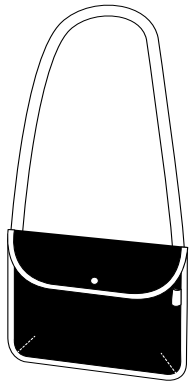
# BACKPACKS







# BAGS

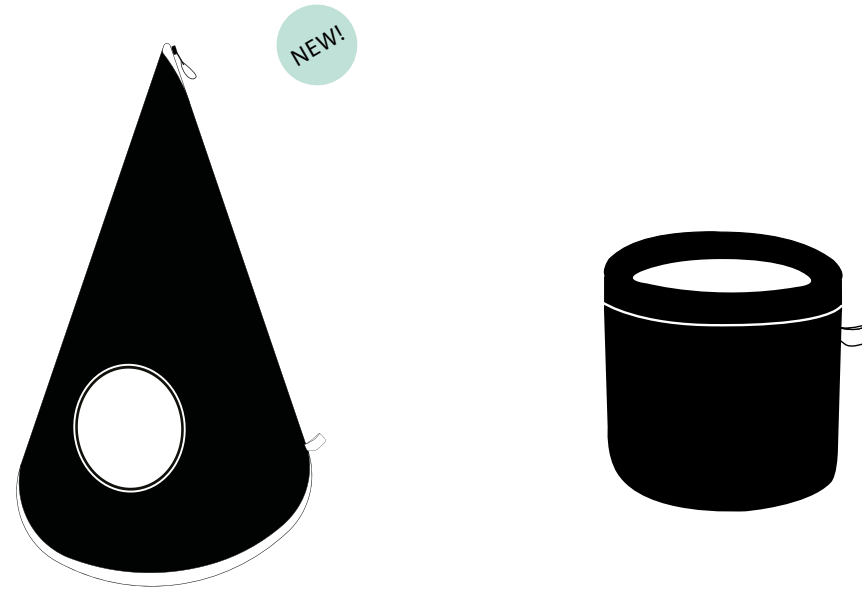








# HOME







PIJAMA COLLECTION  
SPRING SUMMER 2023  
TEXTILES OVERVIEW



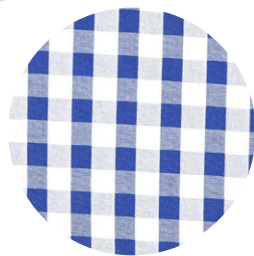
NEW!

PRISMA RED  
/ PRRD /



NEW!

PRISMA BLUE  
/ PRBL /



NEW!

DEAD STOCK  
/ DS01 /



OUT OF STOCK

DEAD STOCK  
/ DS02 /



OUT OF STOCK

DEAD STOCK  
/ DS05 /

NEW!



DALIA BLUE  
/ FLDB /



DALIA  
/ FLDA /



LUREX TURTLE  
/ LUTU /



LUREX PRISMA  
/ LUPR /



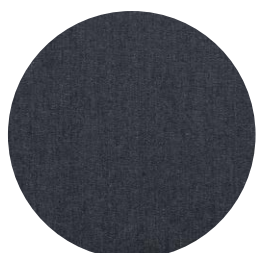
SOFA LUREX  
/ SOLU /



UNICORN  
/ UNIC /



RIVIERA BLUE  
/ RIBL /



DENIM BLACK  
/ DEBK /



DENIM BLUE  
/ DEDB /



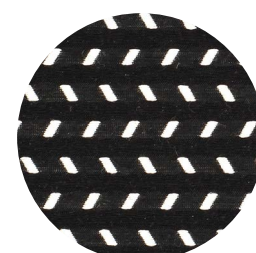
DANDY HERRINGBONE  
/ DAHT /



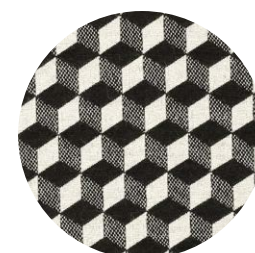
GRIGNANI  
/ PJGR /



ZIG ZAG BLACK  
/ ZIBK /



TIC TAC  
/ TIBK /



OPTICAL CHECK  
/ SOOP /



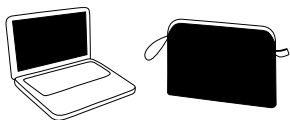
OPTICAL RAINBOW  
/ OPRA /

# PIJAMA

## PRODUCTS OVERVIEW

DEVICES

### MACBOOK ZIP CASE



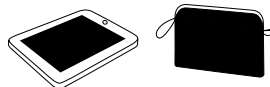
/Z12/ **MACBOOK PRO 13"/ AIR**  
/Z13/ **MACBOOK PRO 14"/LAPTOP 13"**  
UP TO 32,5 X 22,5/IPAD 12,9"  
/Z15/ **MACBOOK PRO 16"/15"**

### IPHONE CASE



/IPP/ **IPHONE 11 PRO MAX /**  
**11 XS MAX / XR**  
Up to 15,8 x 7,7 cm  
/IPX/ **IPHONE 14/14 PRO /13/13 PRO /12 /**  
**12 PRO/11 PRO/ XS/X**  
Up to 14,4 x 7,1 cm

### IPAD ZIP CASE



/ZAR/ **IPAD / iPad AIR/ IPAD PRO 11"**

LIFESTYLE ACCESSORIES

### WALLET



/WLW/ **WALLET**  
For cards and notes  
Zip closure – 21 x 11 cm  
Inside zip pocket for coins  
Fits up to smartphone 6,5"

### POCKET



/POS/ **POCKET S**  
Zip closure 11 cm – 13 x 9 cm  
/POM/ **POCKET M**  
Zip closure 17 cm – 20 x 13 cm  
/POL/ **POCKET L**  
Zip closure 27 cm – 30 x 21 cm

### SUNGLASSES CASE



/SUG/ **SUNGLASSES**  
Strap closure –  
18 x 10 cm  
glasses up to 15 cm

### PENCIL POCKET



/POP/ **PENCIL POCKET**  
Zip closure 16 cm – 19 x 7 cm

TRAVEL

### SLEEPING MASK



/MAS/ **SLEEPING MASK**  
Elastic straps  
18 x 8 cm

HOME

### CACHEPOT



/CAS/ **CACHEPOT S**  
h 13 x 13 cm diameter  
/CAM/ **CACHEPOT M**  
h 16 x 16 cm diameter

### MERLINO CAT'S BED



/PEC/ **CAT'S BED**  
Portable and rollable bed  
Extra pillow – Hand washable  
h 60 x 45 cm diameter  
hole 15 cm

NEW!

# PIJAMA

## PRODUCTS OVERVIEW

BACKPACKS

### BACKPACK



/PAC/ **BACKPACK**  
Measure h 44 x 31 cm  
Strap closure  
Laptop 15" inner compartment  
Adjustable shoulder straps  
Black cotton handle

### BACKPACK MINI



/PAB/ **MINI BACKPACK**  
Measure h 35 x 28 cm  
Strap closure - Inside pocket  
Fits up to 13" macbook -  
Adjustable shoulder straps  
Black cotton handle

### SATCHEL BACKPACK



/SAT/ **SATCHEL BACKPACK**  
2 strap closure - 35 x 32 x 5 cm  
Fits 13" laptop  
External pocket -  
Adjustable shoulder straps  
Black cotton handle

### MINIMAL BACKPACK



/MIN/ **MINIMAL BACKPACK**  
Top zip closure - h 42 x 32 x 6 cm  
Lateral and internal pockets  
with zip closure  
Adjustable straps  
Black cotton handle

### STRING BACKPACK



/STR/ **STRING BACKPACK /BAG**  
Multiuse bag or backpack  
Rope shoulder adjustable  
straps  
Zip closure - 31 x 26 x 11 cm

### 2-WAY BAG



/BAG/ **BACKPACK/BAG**  
Top zip closure 40 cm - 44x44cm  
Fits up to 15" laptop  
Front pocket  
Snap hook 6 cm  
Adjustable shoulder straps  
Black cotton handle

MULTIUSE BACKPACKS / BAGS

### CIRCLE BAG



/CIB/ **SHOULDER CIRCLE BAG**  
Zip closure -  
diameter 25 cm  
Thin elastic shoulder straps

### PING PONG BAG

NEW!



/PIN/ **PING PONG BAG**  
Zip closure  
diameter 18 X 30 cm  
Thin elastic shoulder straps

### SHOULDER BAG



/BOS/ **SHOULDER/ CROSSBODY BAG**  
Measure h 21 x 27  
Snap closure  
Adjustable strap  
Black thin cotton handles

BAGS

### BUM BAG



/BUM/ **WAIST BAG**  
Zip closure - 23 x 15 cm  
Adjustable strap with quick  
release bucle

### SHOPPING BAG



/BEA/ **SHOPPING BAG**  
Zip closure - 52 x 35 x 15 cm  
Internal pocket  
Snap hook inside  
Black cotton handles

### DUFFLE BAG



/DUE/ **DUFFLE BAG**  
Long webbing top handle  
Zip closure - 50 x 23 cm

Pijama was born in 2006 from an idea by Monica Battistella, designer, and Sergio Gobbi, architect. As soon as they realised that Milan and its surroundings were full of abandoned fabric stocks, they decided to give them new life.

It all started with scratch proof soft cases for Powerbook, iPods and vinyl records; then the family grew to include bags, backpacks and all lifestyle products.

Since 2006 Pijama is manufactured in a family run laboratory not far from Milan, with the finest fabrics and by experienced taylorers.

#madeinitaly

#since2006

---

SBAM DESIGN SRL  
sales@sbam-design.it

+39 0331 678923

Busto Arsizio

piazza Alessandro Manzoni 5