



OBJECT: TECHNICAL PRESENTATION FOR TECHNOLOGY CHANGE

BEFORE



EXPLANATION

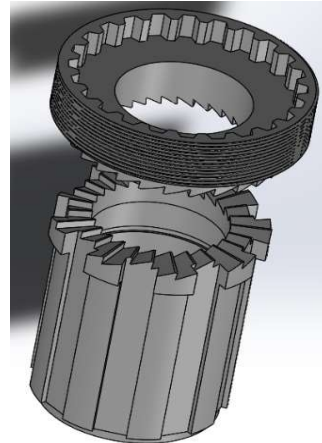
3 DIFFERENT PIECES TO CREATE THE WHOLE ASSEMBLY

THE MAIN BODY IS MADE OF MACHINED ALUMINIUM

3 LITTLE TOOTH SHAPED PIECES ARE KEPT TOGETHER WITH A SPRING TO ALLOW THE ROTATION IN ONE DIRECTION BUT NO ON THE OPPOSITE ONE

A FINAL ASSEMBLY IS REQUIRED BEFORE INSTALLATION

AFTER



EXPLANATION

2 PIECES TO RECREATE THE SAME FUNCTION

BOTH PARTS ARE MADE WITH THE SINTERING TECHNOLOGY

ONLY THE COUNTERPART REQUIRES A MACHINING (THREAD)

SAME FUNCTION WITH LESS PIECES AND LESS MACHINING

NO ASSEMBLY REQUESTED



OBJECT: TECHNICAL PRESENTATION FOR TECHNOLOGY CHANGE

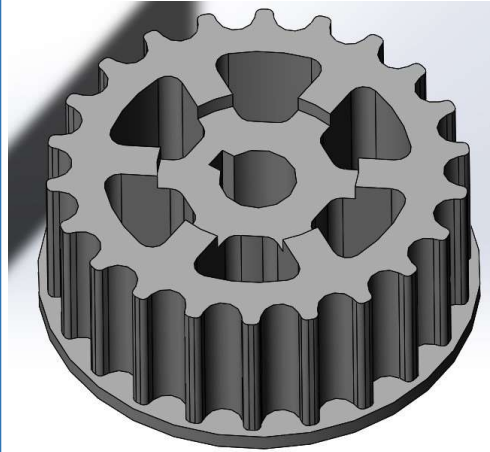
BEFORE
 A photograph of a cast metal part, likely a bracket or connector, with a central circular hole and two side flanges. The part is dark and has the text 'CS386' engraved on it.
EXPLANATION
PIECE MADE WITH CAST TECHNOLOGY
MOLD SHELF LIFE OF APROX. 30K PIECES
PRICE: 6,50€

AFTER
 A 3D CAD model of a sintered metal part, showing a similar design to the cast part but with a more refined, metallic finish and visible internal structure.
EXPLANATION
PIECE MADE WITH SINTERING TECHNOLOGY
MOLD SHELF LIFE OF APROX. 100K PIECES
PRICE: 4,10€



OBJECT: TECHNICAL PRESENTATION FOR TECHNOLOGY CHANGE

BEFORE



EXPLANATION

PIECE MADE WITH SHELL MOLDING
TECHNOLOGY

LOW NUMBER OF PIECES PRODUCED PER
HOUR 50pcs/h

LOW OVERALL PRECISION
GENERAL TOLLERANCE +/-0,2mm

PRICE: 5,12€

AFTER



EXPLANATION

MADE WITH SINTERING TECHNOLOGY
WITHOUT ANY FUTHER MACHINING

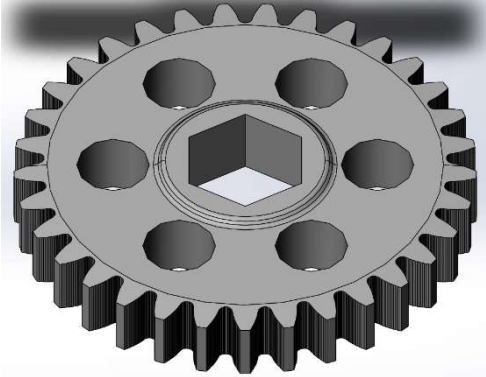
HIGH NUMBER OF PIECES PRODUCED PER
HOUR 200pcs/h


HIGH OVERALL PRECISION
GENERAL TOLLERANCE +/-0,05mm

PRICE: 3,20€



OBJECT: TECHNICAL PRESENTATION FOR TECHNOLOGY CHANGE

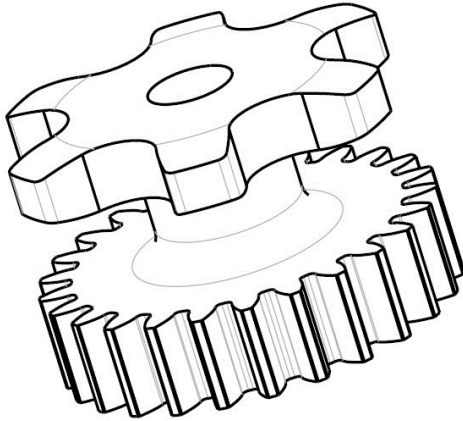
BEFORE

EXPLANATION
PIECE MADE WITH DIE CASTING TECHNOLOGY
THE TEETH PROFILE MUST BE REMACHINED
LOW PROCESS REPEATABILITY
15% WASTE IN PROCESSING
PRICE: 7,40€

AFTER

EXPLANATION
MADE WITH SINTERING TECHNOLOGY WITHOUT ANY FURTHER MACHINING
FINAL TOLERANCE ACQUIRED WITHOUT ANY FURTHER MACHINING
HIGH PROCESS REPEATABILITY
1% WASTE IN PROCESSING
PRICE: 3,60€



OBJECT: TECHNICAL PRESENTATION FOR TECHNOLOGY CHANGE

BEFORE



EXPLANATION

THE ORIGINAL PROJECT ENVISIONED A FINISHED PIECE COMPOSED OF A SINGLE PART

NOT FEASIBLE OR TOO EXPENSIVE

AFTER



EXPLANATION

THIS PIECE IS OBTAINED BY THE COMBINATION OF TWO COMPONENTS.

SINTERING TECHNOLOGY HAS ENABLED THE PRODUCTION OF THIS PIECE AT SIGNIFICANTLY LOWER COSTS.