



# TANKS

FOR THE STORAGE AND  
HANDLING OF LIQUIDS,  
POWDERS AND GRANULES

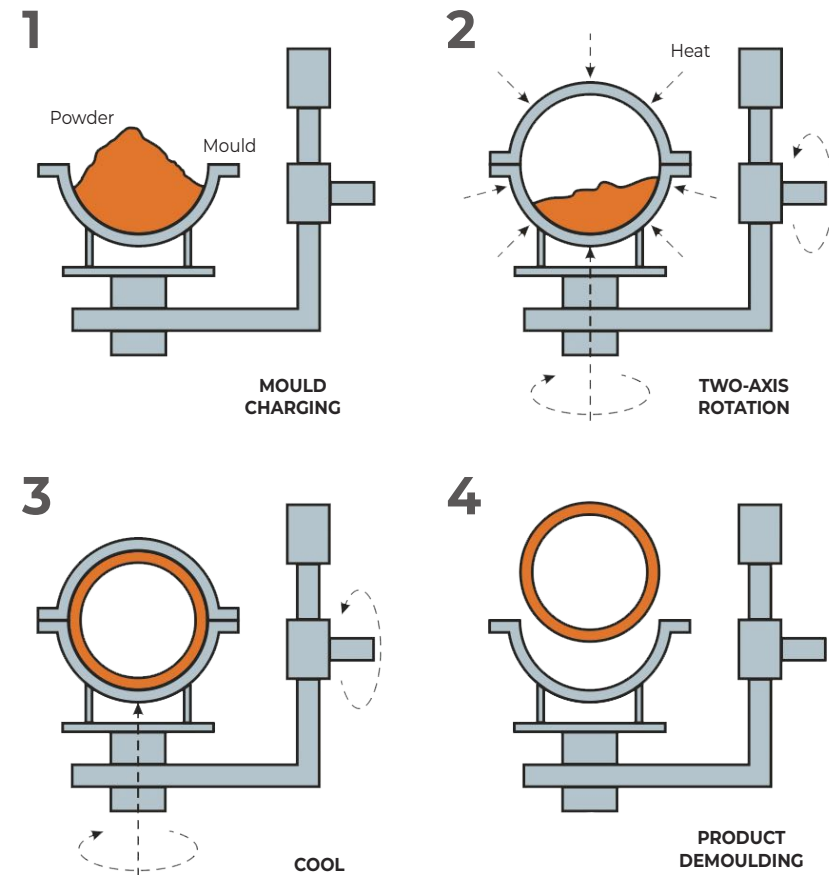
# ROTATIONAL MOULDING TECHNOLOGY

Rotational moulding is a plastic manufacturing process that produces **stress-free parts** as there is little or no force or pressure involved.

Our products are made of **polyethylene** (PE), which thanks to its properties, is far superior to other materials such as steel or fiberglass which can rust, corrode or deteriorate.

Products obtained by rotational moulding technology have **crucial features** compared to other manufacturing processes:

- Monobloc without welds or joints
- Longer lifespan (+10 years)
- Designed for optimum performance
- Higher resistance and lighter weight
- Impervious to weather conditions and UV resistant
- Resistance to deterioration from exposure to chemicals
- 100% recyclable



# TANKS FEATURES

- Made by rotational moulding in **one single piece, without welds or joints**
- Produced in linear polyethylene (PE) and with non-toxic polymer
- Compatible for contact with food
- Suitable for the storage of dangerous and corrosive chemicals
- Made with **anti-UV additives** for external and internal positioning
- Available in multiple geometries
- Capacity from 50 Lt to 25.000 Lt
- Available with catchment tanks which are mandatory by law, replacing the traditional coated reinforced concrete basins

## LIMITATIONS OF USE

- All tanks are designed for function, exclusively, for the storage at a **room temperature** (-20°C / +45°C) and at an **atmospheric pressure**
- Use for flammable is **never allowed**;
- The use of tanks for exothermic reactions or which produce gas is prohibited; consult our Technical Department.



# TANKS VERSIONS

As the density and chemical aggressiveness of the contained substance vary, the thickness of the tank must be correctly sized.

The type of tank is intended to be suitable for concentrations lower than or equal to the values shown.

## L

Liquids with a density up to  $1.1 \text{ g/cm}^3$  and a low or a zero chemical aggressiveness

- Only for water or as a catchment tank

## S

Liquids with a density up to  $1.4 \text{ g/cm}^3$  and a moderate chemical aggressiveness

- |                           |                              |
|---------------------------|------------------------------|
| • acetic acid 10%         | • sodium chloride 100%       |
| • citric acid 10%         | • ferrous chloride 15%       |
| • formic acid 50%         | • antifreeze glycol 100%     |
| • phosphoric acid 50%     | • ammonium hydroxide 100%    |
| • ammonia 100%            | • polyaluminium chloride 18% |
| • antiscalant 100%        | • sodium silicate 100%       |
| • sodium bicarbonate 100% | • ammonium sulphate 100%     |
| • sodium bisulfite 100%   | • sodium metabisulfite 100%  |
| • lithium bromide 100%    | • urea 32%                   |
| • sodium carbonate 100%   | • ...                        |

## M

Liquids with a density up to  $1.7 \text{ g/cm}^3$  and a moderate or a medium chemical aggressiveness

- |                         |                               |
|-------------------------|-------------------------------|
| • acetic acid 50%       | • hydrogen peroxide 10%       |
| • hydrochloric acid 30% | • sulfur dioxide 5%           |
| • etidronic acid 60%    | • ferric chloride 100%        |
| • formic acid 100%      | • sodium hydroxide 50%        |
| • phosphoric acid 85%   | • lubricating oil             |
| • hydrofluoric acid 40% | • potassium permanganate 100% |
| • nitric acid 5%        | • surfactants                 |
| • polyacrylic acid 100% | • ...                         |
| • sulfuric acid 60%     |                               |

## X

Liquids with a density up to  $2.0 \text{ g/cm}^3$  and a high chemical aggressiveness

- |                             |                         |
|-----------------------------|-------------------------|
| • chromic acid 30%          | • peracetic acid 15%    |
| • sulfuric acid 98%         | • hydrogen peroxide 30% |
| • sodium hypochlorite 12,5% | • sodium chlorite 100%  |
| • acetic acid 100%          | • ....                  |
| • nitric acid 40%           |                         |



**CVL**



Free-standing vertical cylindrical closed-top tank

**CVD**



Free-standing vertical cylindrical tank with an upper support surface

**CAB**



Free-standing vertical cylindrical open-top tank with dustproof cover

**VCA**



Free-standing cylindrical open-top tank

**VCC**



Free-standing cylindrical open-top tank with dustproof and rainproof cover

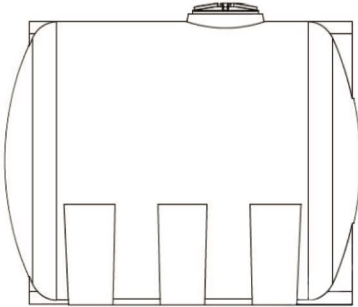
**VCQ**



Square tank (CQ) with a safety tank (VQ)

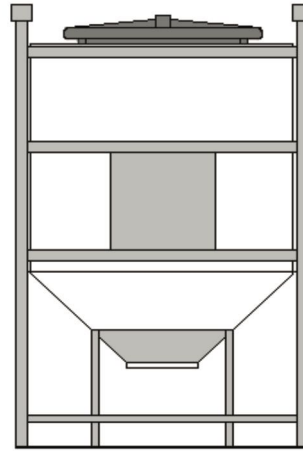


**COL**



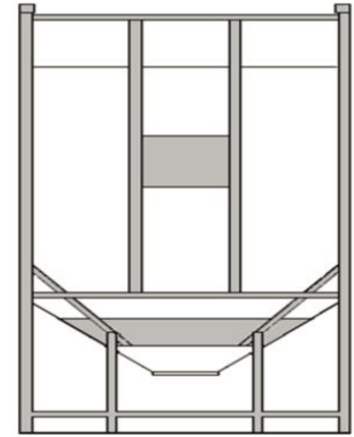
Free-standing horizontal cylindrical tank

**SIL**



Closed-top conical bottom tank with a square steel frame

**SIA**



Open-top conical bottom tank with a square steel frame

**CTC**



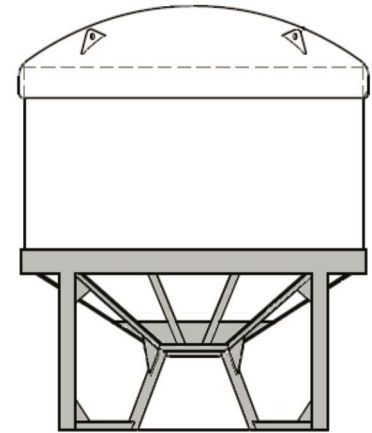
Closed-top conical bottom tank with a circular steel frame

**VTA**



Open-top conical bottom tank with a circular steel frame and reinforced edge

**VTC**



Open-top conical bottom tank with a circular steel frame and dustproof and rainproof cover





# TANKS ACCESSORIES

All Roplast's tanks can be customized according to needs.

The tanks are compatible with various types of accessories such as stubs, valves, loading/unloading tubes, custom metal frames, etc.

These accessories are mounted and/or welded directly in the factory according to the drawings approved by the customer.

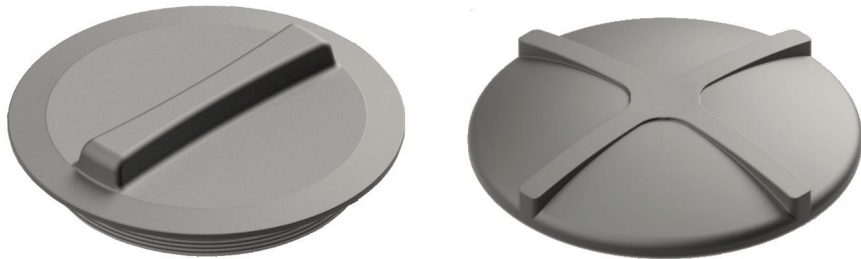


Check the full catalogue

<http://www.roplast.it/it/divisione-serbatoi/serbatoi-in-rotostampaggio>



## SREW LIDS



## VALVES



Ring ball valve



Check valve

## UNLOADING FOR CONICAL BOTTOM TANKS



Semi-flanging pair



Guillotine

## RAPID ATTACKS

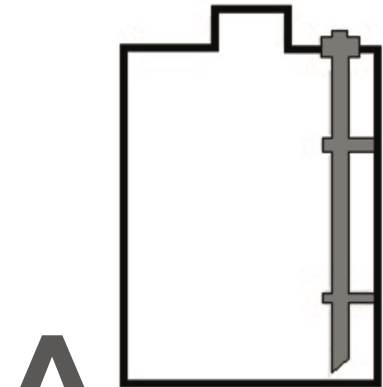


Camlock

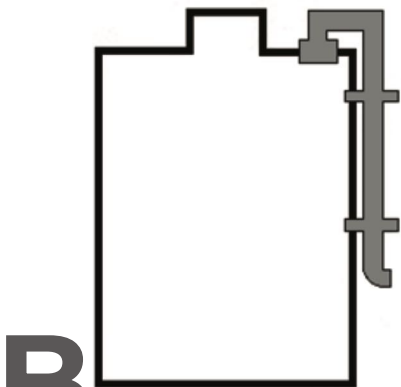




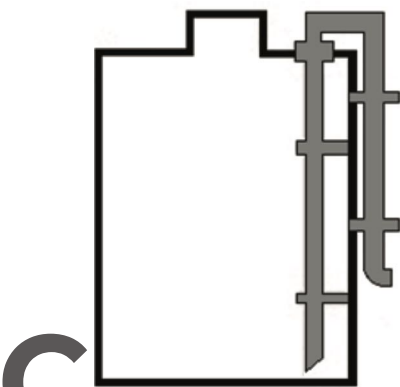
LOADING/UNLOADING GROUPS AND INDICATORS



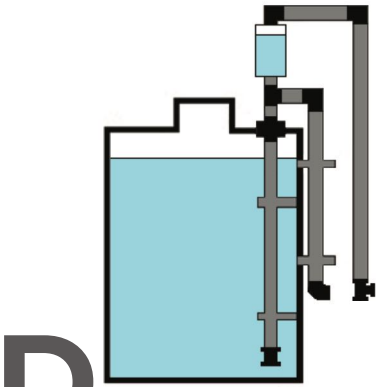
**A** Loading/unloading pipe from above



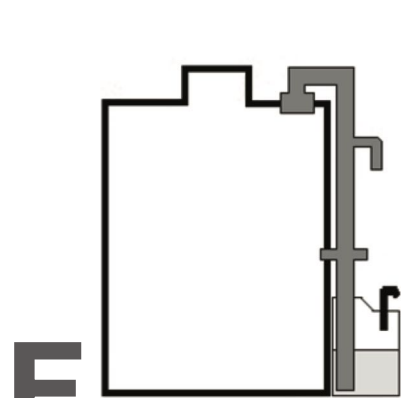
**B** External loading pipe from below



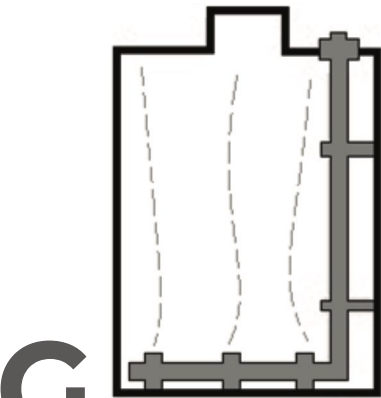
**C** Loading/unloading pipe from below



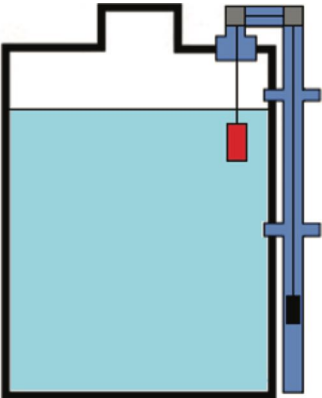
**D** Self-priming pump



**E** Acid fumes and vapors abatement and neutralization system



**G** Air diffuser



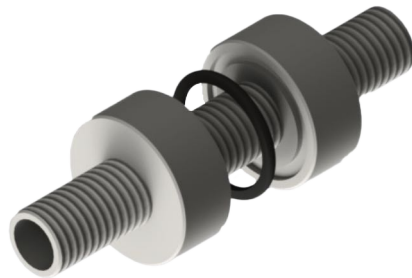
Optical level indicator



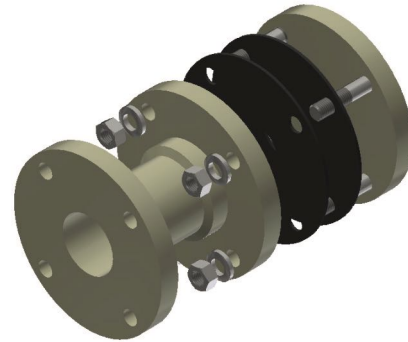
## SIDEWALL STUBS



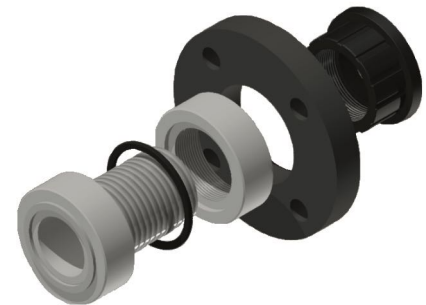
Reinforced simple male stub



Double male reinforced stub



Fixed flange stub



Loose flange stub

## VENTS



Recurved vent



Mushroom vent



Clapet valve



Double effect valve



# CONTACTS

Roplast S.r.l.



Address

Via Castegnate, 86 - 24030 Terno d'Isola (BG)



Telephone

+39 035 051 48 11



VAT number

00820540169



Email

[info@roplast.it](mailto:info@roplast.it)



Email

[export@roplast.it](mailto:export@roplast.it)



Web site

[www.roplast.it](http://www.roplast.it)

