



RLS-1000A

Radiation locating and imaging system



Features

- Rapidly identifies and locates sources of interest
- Real-time spectroscopy, ID, imaging
- High angular resolution imaging at 50 keV-1.5MeV
- Option for <2% FWHM energy resolution at 662keV
- Precision overlay of gamma-ray and optical images
- Ready to use in under 10s
- discrimination between background and sources of interest in less than 1 second
- Dose-range gauge
- Annual recalibration and software updates included

Performance

Item	Parameter
Dimensions	370 mm x 250 mm x 138 mm
Weight	18.7 lbs (8.5 kg)
Power Supply	AC 100-240V 50/60Hz
Startup & Operating Temp.	Startup & Operating Temp.
Storage Temperature	-40°C to 50°C
Ingress Protection	IP65
Energy Resolution	≤10% at 662 keV
Optical Field of View	≥70° (horizontal), ≥40° (vertical)
Radiation Field of View	≥40°
Angular Precision	≤2°
Angular Resolution	~3° FWHM
Sensitivity	30 nGy/h@Cs-137 imaging time < 180 s
Energy Range	30 keV ~ 3000 keV (spectroscopy) 50 keV ~ 1500 keV (imaging)
Crystal Volume	50×50×6 mm ³ NaI
Alarms	Audio & visual alarms based on counting rate; Silence independently & preemptively; adjustable threshold
Isotope Library	Select from 3573 ENDF isotopes & user defined; unlimited
Startup Time	< 10 s at 23° C (73° F)
Display	1920*1080 HD
Communication	Ethernet



RLS-3000A

Omnidirectional radiation locating and imaging system



Features

- Rapidly identifies and locates sources of interest
- Real-time spectroscopy, ID, imaging
- Omnidirectional sensing and imaging at 50 keV-3 MeV
- Option for <2% FWHM energy resolution at 662 keV
- Precision overlay of gamma-ray and optical images
- Ready to use in under 60 s
- Discrimination between background and sources of interest in less than 1 second
- Light weight and highly portable
- Dose-range gauge
- Annual recalibration and software updates included

Performance

Item	Parameter
Dimensions	Φ×H: 228 mm×163 mm
Weight	7.7 lbs (3.5 kg)
Power Supply	AC 100-240V 50/60Hz
Startup & Operating Temp.	-20°C to 40°C
Storage Temperature	-40°C to 50°C
Ingress Protection	IP53
Energy Resolution	≤10% at 662 keV
Optical Field of View	360° (horizontal), ≥135° (vertical)
Radiation Field of View	4π (360°)
Angular Precision	≤2°
Angular Resolution	~20° FWHM
Sensitivity	30 nGy/h@ Cs-137 imaging time < 1 min
Energy Range	30keV ~ 3000keV (spectroscopy; imaging)
Crystal Volume	67.5×67.5×20 mm ³ GAGG
Alarms	Audio & visual alarms based on counting rate; Silence independently & preemptively; adjustable threshold
Isotope Library	Select from 3573 ENDF isotopes & user defined; unlimited
Startup Time	< 60 s at 23° C (73° F)
Display	1920*1080 HD
Communication	Ethernet



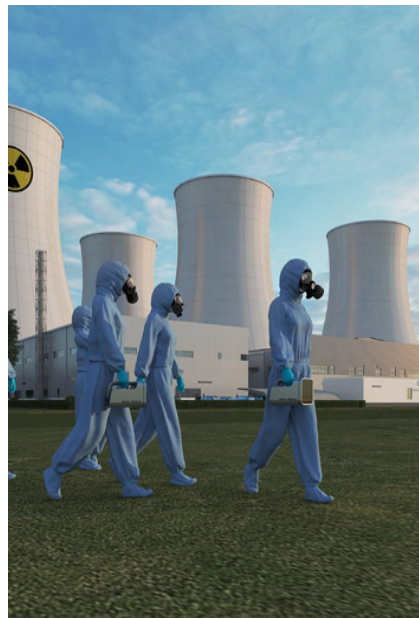
RLS-3000C

Portable radiation locating and imaging device



Features

- Rapidly identifies and locates sources of interest
- Real-time spectroscopy, ID, imaging
- Omnidirectional sensing and imaging at 50 keV-3 MeV
- Precision overlay of gamma-ray and optical images
- Direction of the sources outside the optical FOV
- Option for <2% FWHM energy resolution at 662 keV
- Ready to use in under 60s
- discrimination between background and sources of interest in less than 1 second
- Light weight and highly portable
- Integrated range finder
- Dose-range gauge
- Annual recalibration and software updates included



Performance

Item	Parameter
Dimensions	280 mm×166 mm×180 mm
Weight	11 lbs (5 kg)
Power Supply	AC 100-240V 50/60Hz
Startup & Operating Temp.	-20°C to 40°C
Storage Temperature	-40°C to 50°C
Ingress Protection	IP53
Energy Resolution	≤3% at 662 keV
Optical Field of View	≥ 120° (horizontal), ≥ 70° (vertical)
Radiation Field of View	4π (360°)
Angular Precision	≤2°
Angular Resolution	~20° FWHM
Sensitivity	30 nGy/h@Cs-137 imaging time < 60 s
Energy Range	30 keV~3000 keV (spectroscopy; imaging)
Crystal Volume	67.5×67.5×20 mm ³ GAGG
Alarms	Audio & visual alarms based on counting rate; Silence independently & preemptively; adjustable threshold Select from 3573 ENDF isotopes & user defined; unlimited
Isotope Library	
Startup Time	< 60 s at 23°C (73°F)
Display	1920*1080 HD
Communication	Ethernet; Wifi

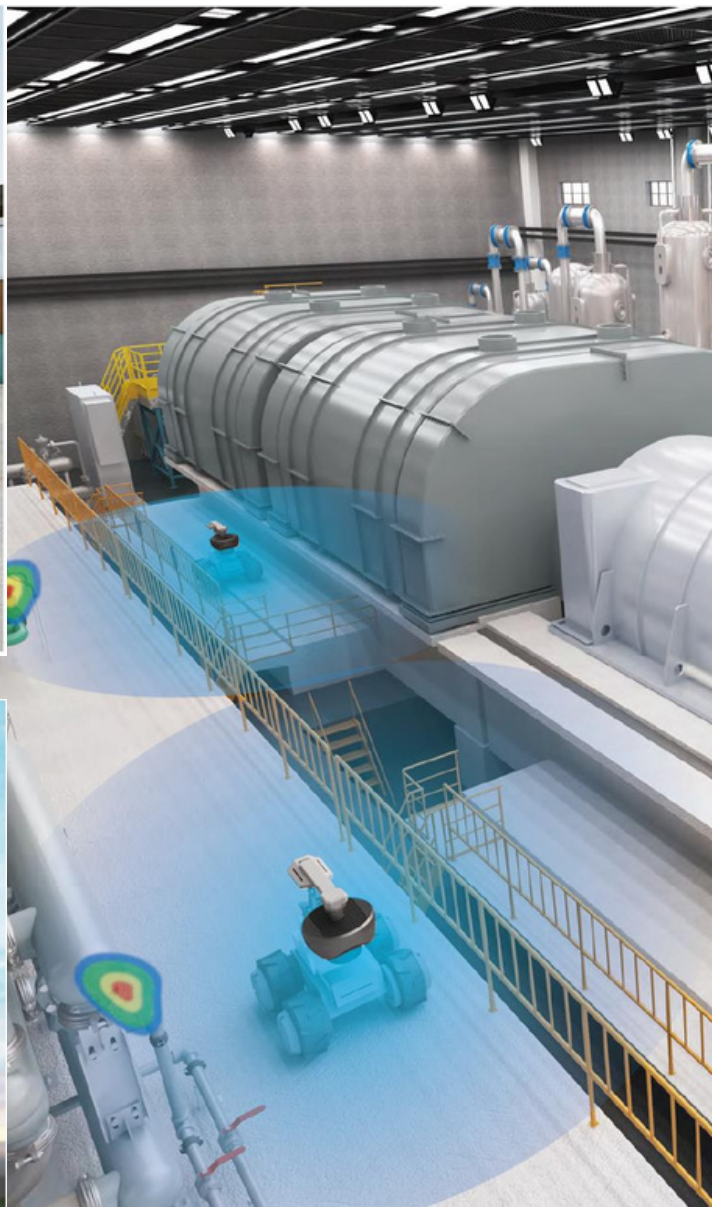
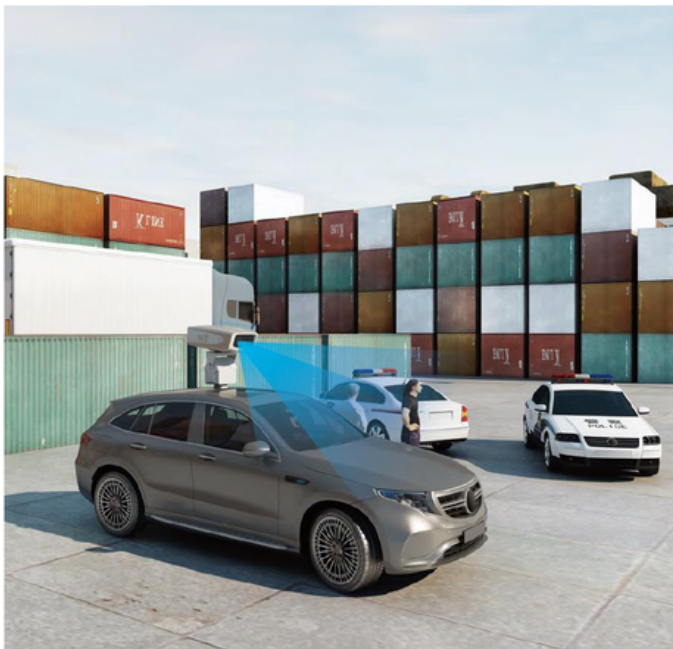


Features

Mobile large-range detection and visualized monitoring of radioactive sources

Remote, accurate localization and rapid tracking of radioactive sources

Customized design of integrated intelligent console



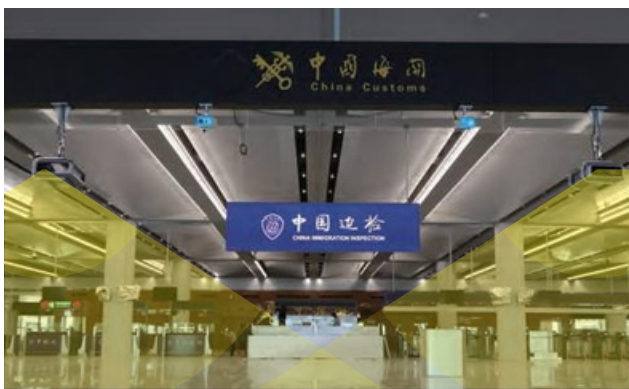
drones & rover
applications



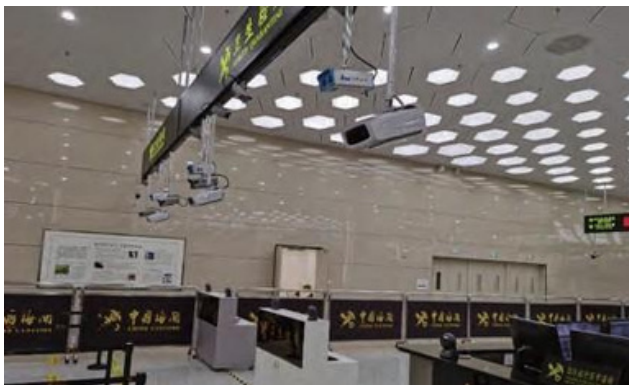
Application Cases



Application at Beijing Daxing International Airport



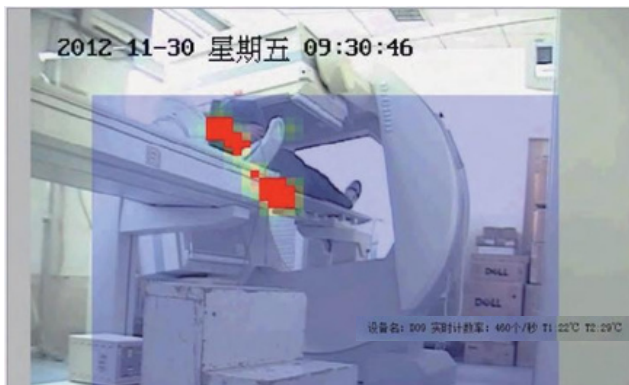
Application at the Hong Kong-Zhuhai-Macao Bridge



Application at the Hengqin Port



Application at Health Bureau of Macao SAR



Application at a hospital



Application at BRICS Xiamen Summit



ATLAS SERVICES
Radiation Protection Experts

www.atlaseservices.com

Applications



Application at exit/entrance



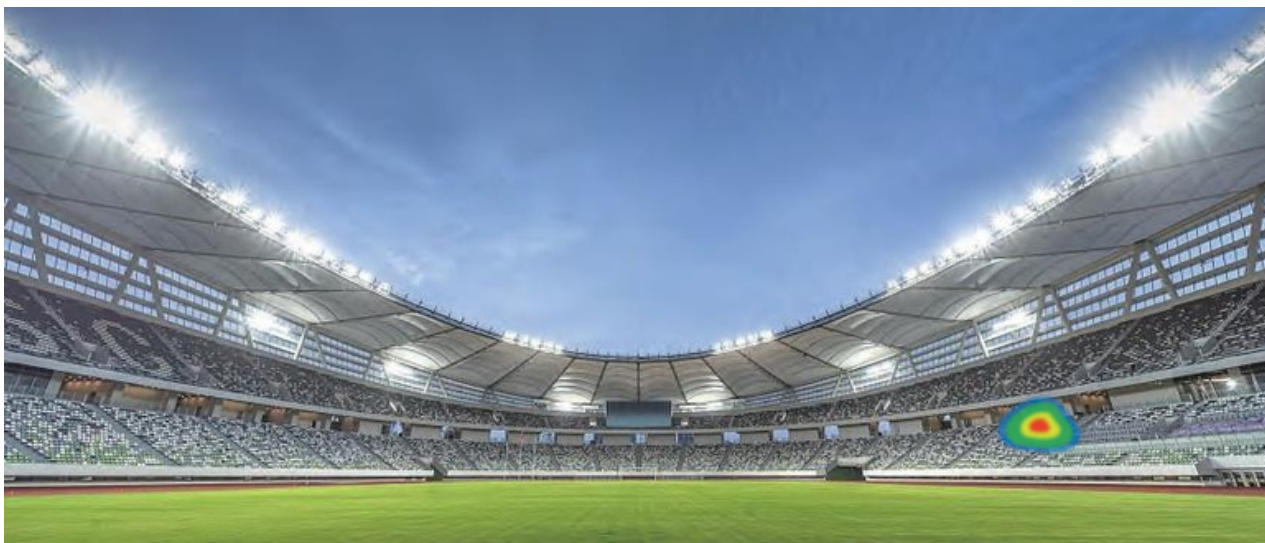
Application for nuclear base monitoring



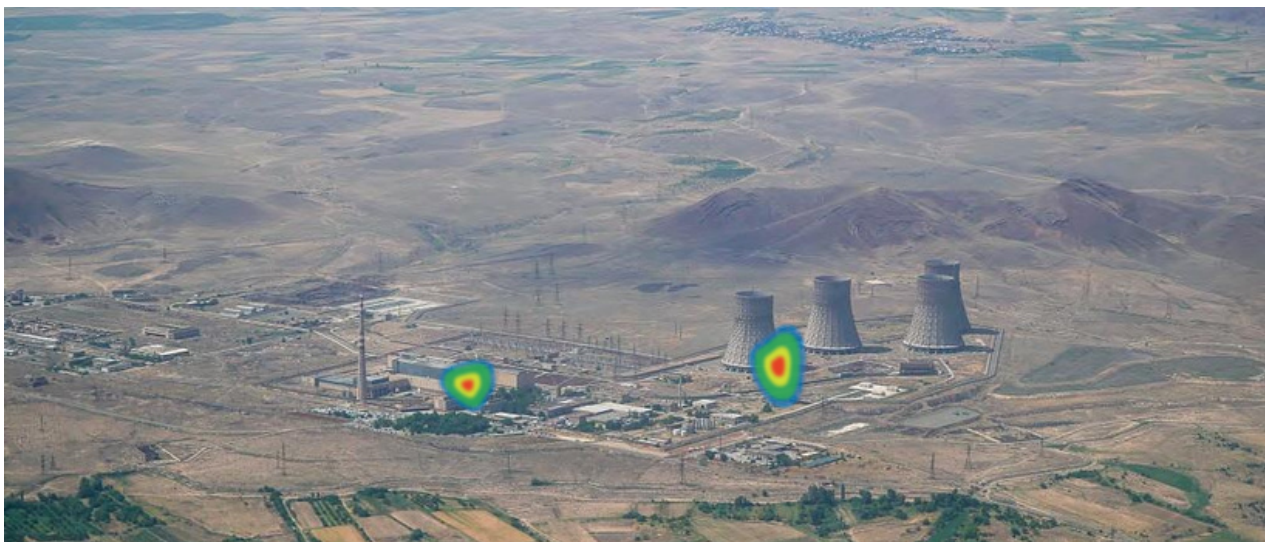
Application during major port construction



Applications



Application for security of public events



Application for regional environmental monitoring



Application for emergency & counterterrorism