

TAILORED **COMPRESSION SYSTEM** WITH **RECIPROCATING AND VANE** **TECHNOLOGIES** FOR ANY **TYPE OF GAS**



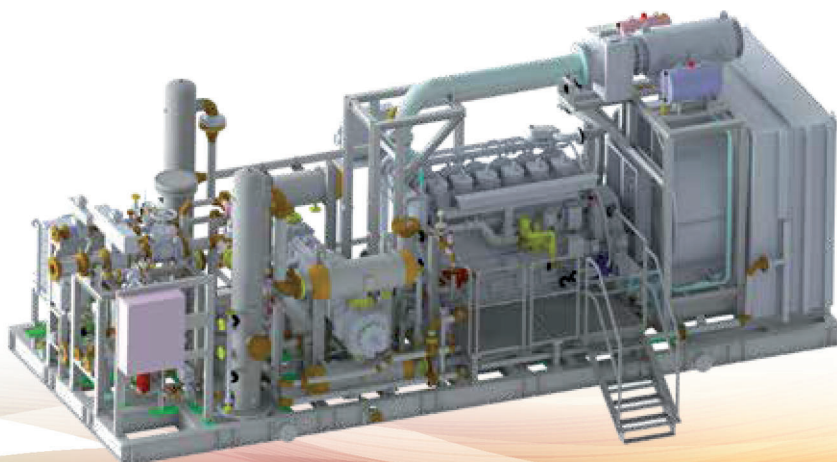
Technology.

Reliability.

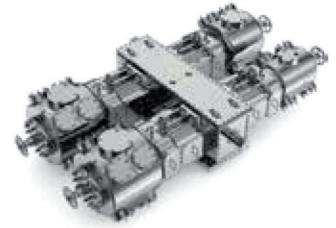
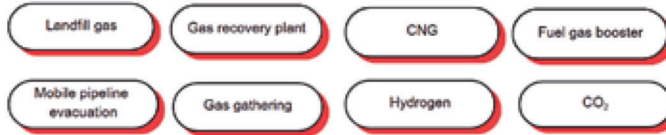
Vision.

With over 60 years of experience in gas compression, **F.B. S.p.A.** launched its **Compressor Business Unit** in 2024:

a division fully dedicated to the **engineering and manufacturing** of gas compressor systems for the **Fuel, Natural Gas and Green Energy** sectors. We combine advanced engineering, global partnerships, and in-house manufacturing to deliver tailor-made compression solutions for demanding industrial applications.



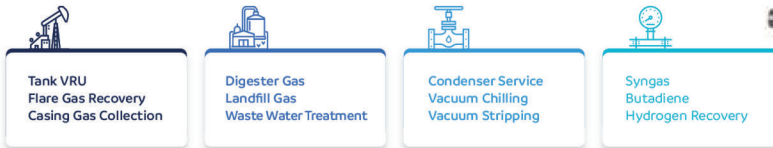
Common Applications:



Main Technical Characteristics
from one to six compressor stages
from 1200 to 7500 kw compression power
from 0.2 bar to 200 bar of operating pressure
OIL -FREE option with distance piece type B
distance piece type C for H2 application
conformity to API 11P / ISO 13631
Cylinders air/gas cooled
CH4, C2H6, C3H8, CO, CO2, N2, H2, Gas mix

Reciprocating Compressor model Summary						
Product Name	HS-A	HS-B	HS-C	HS-D	HS-E	HS-F
No. of Throws	2-4	2-4	2-4-6	2-4-6	2-4-6	2-4-6
Stroke (Inches)	2.75-3.0	4.1-5.1-5.9	4.1-5.1-5.9	4.1-5.1-5.5-6.5	4.1-5.1-5.9-6.7	4.1-5.1-5.9
Max. Speed (RPM)	750-1800	600-1500	600-1500	300-1200	300-1200	300-1200
Max Break Power per throw (kw)	110	300	500	750	1000	1250
Gas Rod Load, T/C (kN)	50	100	160	220	320	450

Common Applications:



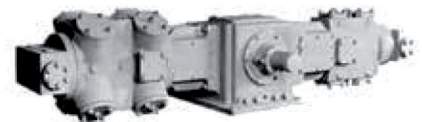
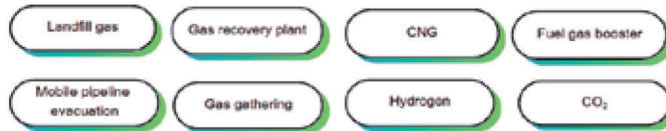
Safety-Reliability-Compliance
• Machines in service for > 50 years
• Compressors bare-shaft & spare parts with Rapid Ship TM (1-2 week lead time)
• Dedicated selection software
• Performance testing at the Rotary Test Center
• No limit of H2S concentration

Model summary							
Type	MAWP (barg)	Inlet Flow range (Sm3/h)		Power range (kw)		Operating speed range (RPM)	
		Min	Max	Min	Max	Min	Max
LP Series	5,5	8	4277	11	309	275	2200
HP Series	10,3	8	849	72	356	275	1465
HP Series	13,8	8	495	72	336	380	1465

Referenced by:



Common Applications:



Main Technical Characteristics
from one to six compressor stages
from 10 to 1200 kw compression power
from 0.2 bar to 350 bar of operating pressure
OIL -FREE option with distance piece type B
distance piece type C for H2 application
conformity to API 618
Cilinders air/gas cooled
CH4, C2H6, C3H8, CO, CO2, N2, H2, Gas mix

Reciprocating Compressor model Summary					
Product Name	TP	Eagle 2000	Eagle 3000	Eagle 4000	Eagle 6000
No. of Throws	1-2-4	2-4	2-4	2-4	2,4
Stroke (Inches)	3-3.5-4.5	3-3.5-4.5	3-3.5-4.5	3-4.5	3-4.5
Max. Speed (RPM)	800-1800	800-1800	800-1800	800-1800	800-1800
Max Break Power (kw)	40-290	140-290	220-440	360-730	440-1200
Gas Rod Load, T/C (kN)	53-80	88	133	177	266

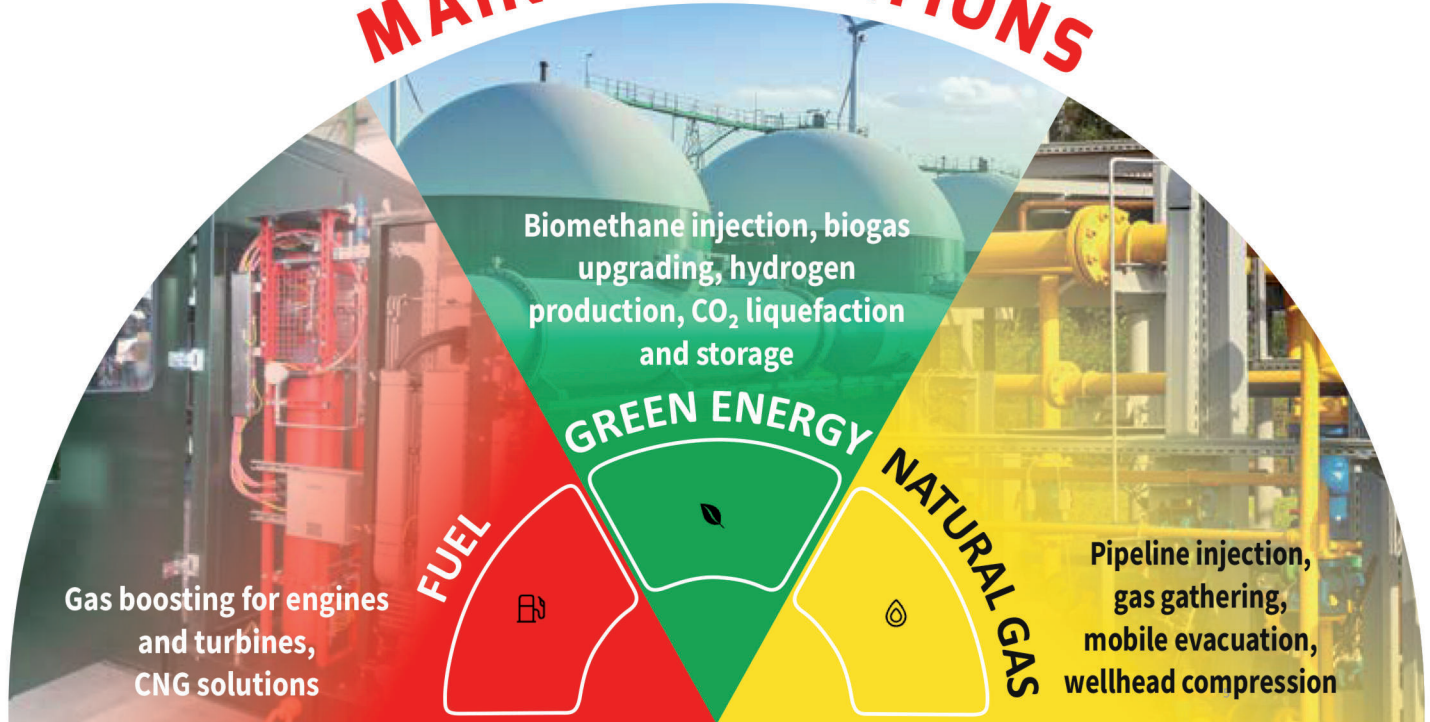
Referenced by:



PRODUCT RANGE

Compressors engineered for performance, durability, and efficiency

MAIN APPLICATIONS



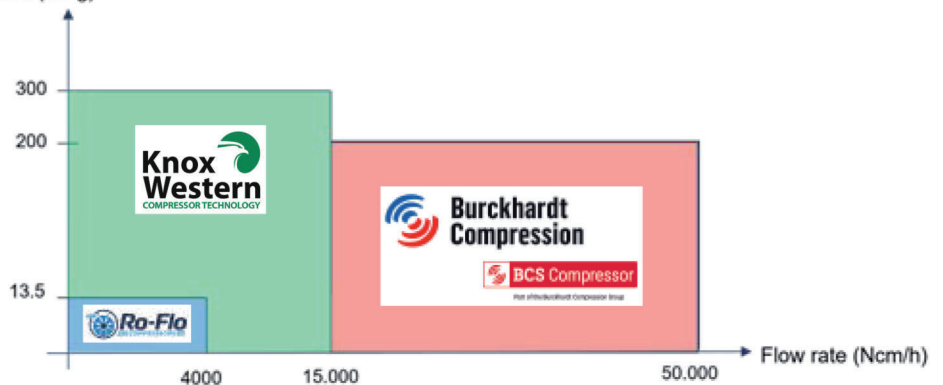
F.B. S.p.A. - Tailor-Made Solutions for Every Compression Challenge

From packaging to direct supply, F.B. S.p.A. delivers technology and reliability to the gas industry. With a legacy of excellence and innovation, we are a leading provider of packaged compressor systems for major OEMs worldwide. Our expertise spans multiple compression technologies – reciprocating, screw, centrifugal, liquid ring, and vane – enabling us to design customized solutions for the most demanding applications.

In 2024, we launched our **Compressor Business Unit**, dedicated to the design, manufacturing, and direct sale of proprietary compressor systems. Through strong partnerships with American and European compressor manufacturers, we offer tailor-made solutions for applications including:

- Pipeline injection
- Mobile pipeline evacuation
- Gas gathering
- Wellhead compression
- Gas boosters for engines and turbines
- CNG
- Biomethane injection
- Biogas boosting for upgrading
- Hydrogen production

Pressure (bar g)



RECIPROCATING COMPRESSORS

High-pressure, high-reliability units designed to handle virtually any gas up to 300 barg. Ideal for:

- Pipeline Injection
- Wellhead Compression
- Mobile Pipeline Evacuation
- CNG Systems
- Biomethane
- CO₂
- Hydrogen

VANE COMPRESSORS

Robust and efficient at low and medium pressure, even with contaminated gases (e.g. H₂S). Suitable for:

- Biogas applications
- Fuel gas boosting
- Gas gathering
- Operation up to 13.5 barg





Why Choose F.B.

- ✓ **Multidisciplinary expertise:** Integration of reciprocating, vane, screw, centrifugal, and liquid ring compressor technologies
- ✓ **Custom skid units:** Turnkey systems designed around customer specifications
- ✓ **Flexible drives:** Electric or gas engine options, depending on application
- ✓ **Advanced testing:** 1MW test bed with closed-loop and customized gas blends
- ✓ **Full compliance:** Certified according to API, ISO, and EU standards

100% In-House Manufacturing – Made in Italy

Our manufacturing site near Ferrara spans over 26,000 m² and includes all key departments:

- Base frame machining
- Welding and NDT
- Sandblasting and painting
- Assembly and final testing



Get in touch

• Compressor Business Unit

Via Ferrarese, 3 – 40128 Bologna, Italy

✉ sales@fbitmi.it

☎ +39 340 2540139 / +39 340 7243405

🌐 www.fbitmi.it