



PAJUSCO  
DESIGN

# ETERIA

The art of emotional warmth

## DESIGN

The fully customisable cladding, with its extensive range of finishes, makes Eteria contextualisable in any home style and environment.

## RADIANT HEATING

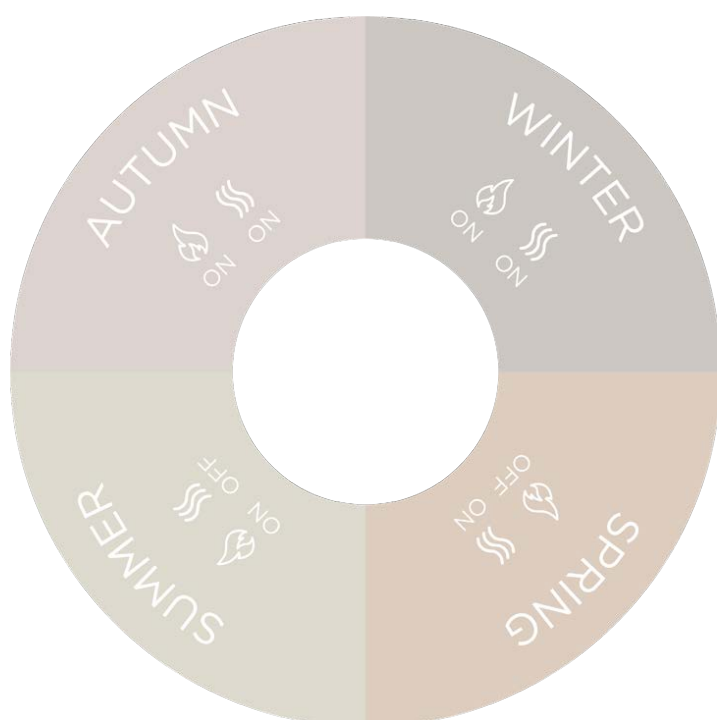
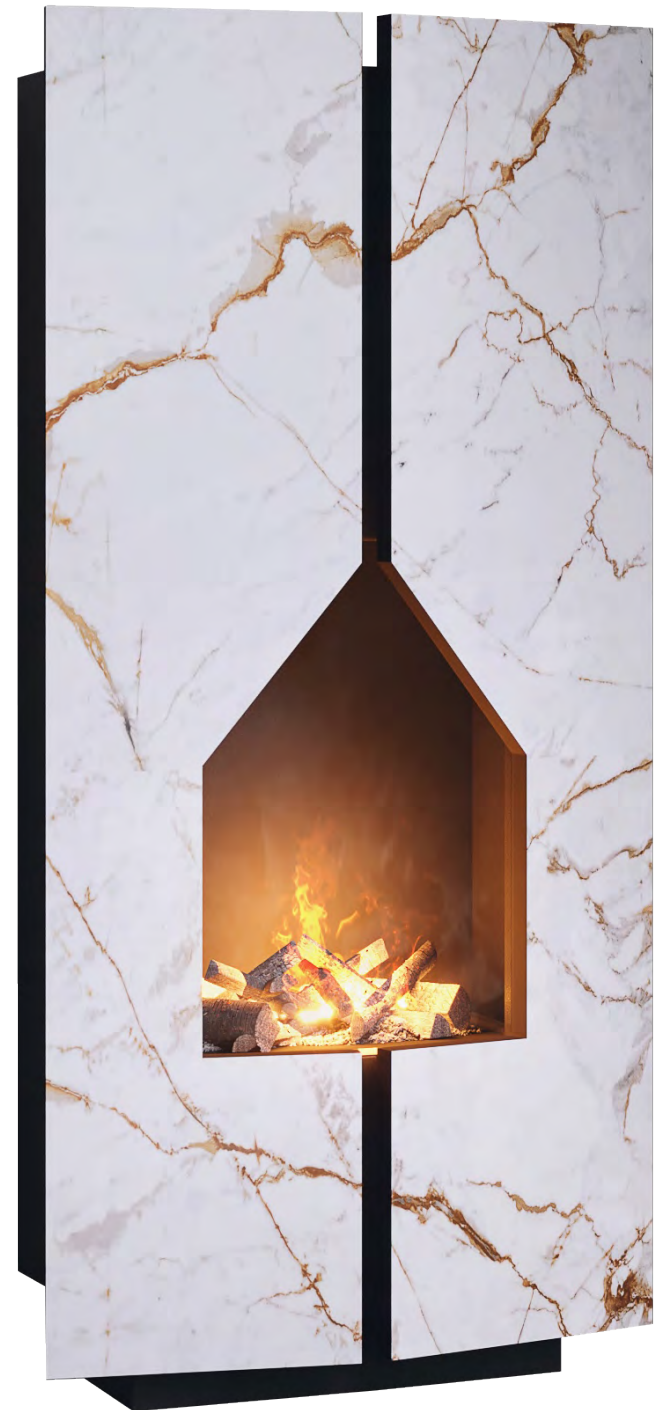
Eteria fully heats by irradiation, therefore in the absence of air movement and dust, it guarantees a healthy and comfortable living environment.

## FIRE VISION

The electric flame generator provides a new immersive experience. No chimney or room ventilation outlets are required, just 2 litres of water per day. This combustion-free system allows installation also in the bedrooms.

## TECHNOLOGY

The electronics control unit reduce electrical consumption by up to 40% compared to ON - OFF systems currently available on the market



**Eteria is usable 365 days a year**

The heating function and the fire vision are distinct from each other. Eteria allows you to create a unique atmosphere in every season.



# PAJUSCO

DESIGN



## Quick-release cladding

The innovative quick-release allows the cladding to be replaced at any time, providing stability, safety and performance, so that it is possible to change the aesthetics of the product to keep it in line with the décor in the renovation of a building or hotel room renovation.

Thanks to this system, we make Eteria even more sustainable by limiting waste disposal to just the cladding, which, being eco-sustainable, will have minimal environmental impact.

## Technical Data

Power Supply	230V, 50Hz
Power Consumption*	1000 W
Energy Consumption	550 Wh - 790 Wh
Heating	600 Wh - 900 Wh
Flame Autonomy**	7 - 10 h
Water Consumption	2 Lt/day
Weight	60Kg (with Dekton) 70Kg (with Lava Stone)
Height	140 cm
Width	63 cm
Depth	36 cm

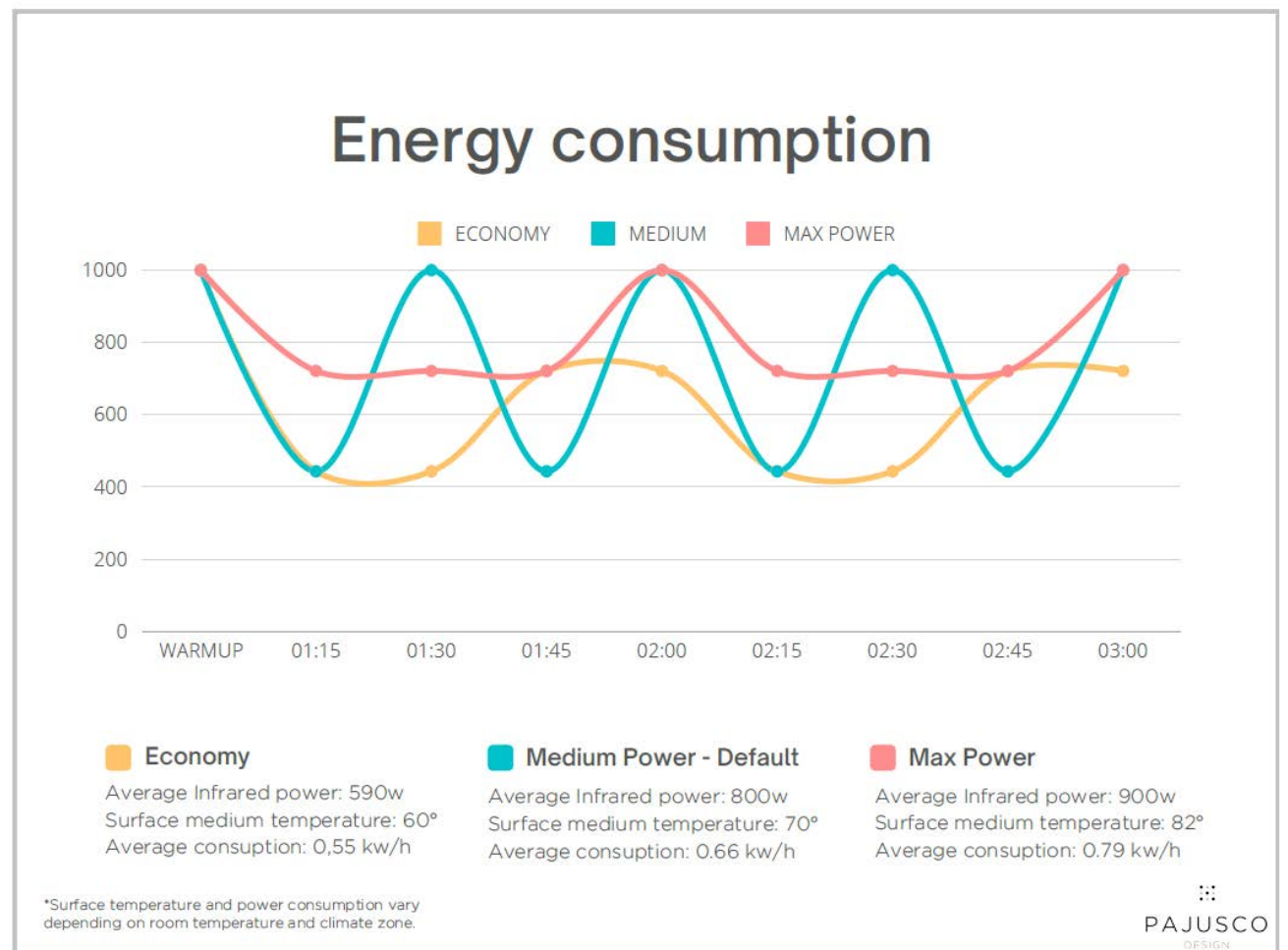
\* only in the first hour of use  
\*\* depending on the intensity of the flame



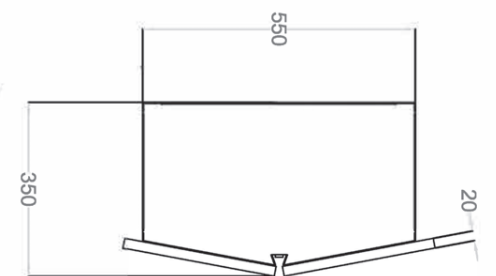
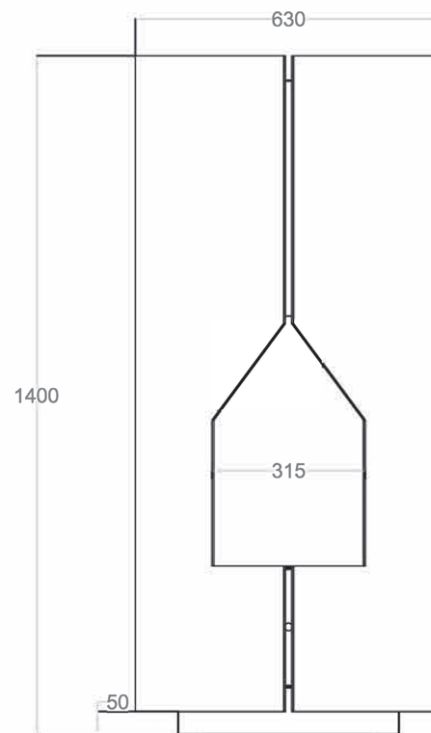
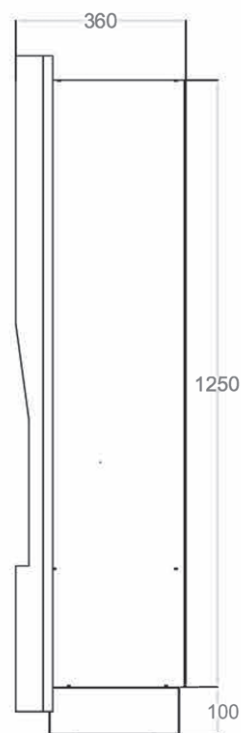
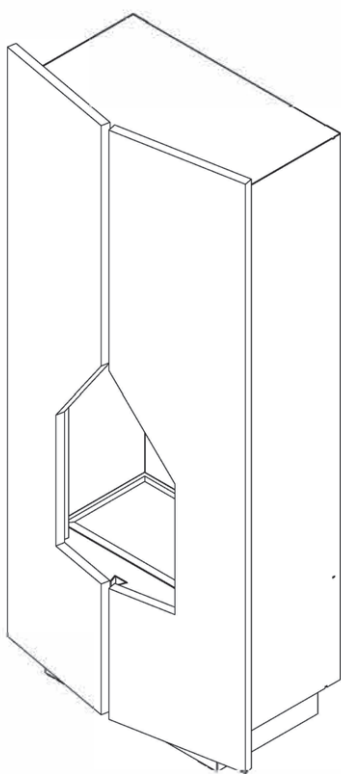
## Electricity consumption details

Thanks to the innovative control unit, Eteria contributes to the reduction of electricity consumption.

This makes it possible to select the electrical consumption and heat output.



## Dimensional Details



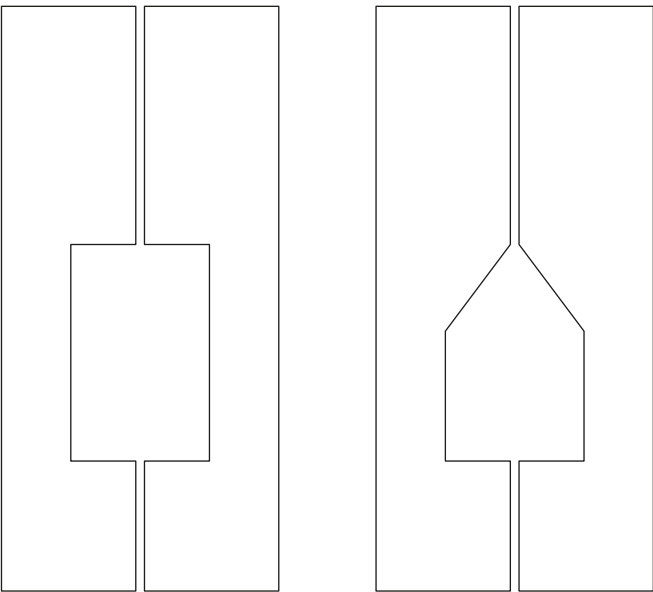




# PAJUSCO

DESIGN

## AVAILABLE MODELS



### **DEKTON**<sup>®</sup>

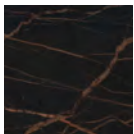
Designed by **COSENTINO**



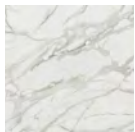
Awake



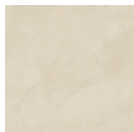
Entzo



Laurent



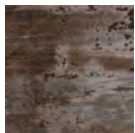
Morpheus



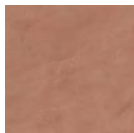
Nacre



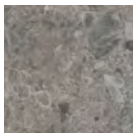
Somnia



Trilium



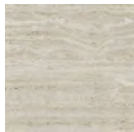
Umber



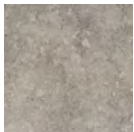
GK07 Ceppo



Micron



Tk06 Marmorio

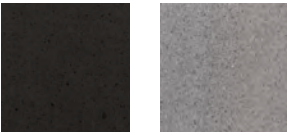


Vk03 Grigio

### **PAJUSCO**

DESIGN - PIETRA LAVICA

#### Natural lava stone



#### Full vitrified lava stone



#### Custom glass texture

