

LA BOTTEGA
DEL FALEGNAME

INSTRUCTIONS FOR USE

ABOUT



*Company Showroom,
Cuneo, Italy*

La Bottega del Falegname constantly searches for the ideal **architectural firms, interior design studios, general contractors, and selected retailers** to accompany it on its journey: business partners that can fully enhance that special uniqueness and added value of the Bottega's work.

Experience gained in Europe, the USA and Switzerland together with an in-depth knowledge of the UK market, gives La Bottega del Falegname the expertise to manage interior design projects both in Italy and abroad.

*Scan the code
to download the
company profile*



*UK flagship
showroom*





LA BOTTEGA
DEL FALEGNAMI

La Bottega del Falegname **designs and crafts exclusive and original furniture.** Each kitchen, living room, bathroom plan or furnishing is, by definition, bespoke and truly unique.

Whether residential or commercial, each individual project caters to a specific need and ensures innovative solutions are employed to optimise the available space.



La Bottega del Falegname has the necessary in-house skills and expertise to **oversee each and every project phase.** A dedicated team ensures a smooth workflow and follows each phase of the work order, from design to construction through to final installation.





LA BOTTEGA DEL FALEGNAME



VARIOUS POTENTIAL SOLUTIONS

- ❶ Receives a complete detailed project.
- ❷ Receives an initial working draft of a project design from a professional and starts a joint working process with the firm itself until a final shared detailed design has been achieved.
- ❸ Receives a simple brief outlining project style and/or objective. From that point on, it manages the entire process, comprising the overall design, how space is employed, layout and every subsequent step down to the finest detail.



TURNKEY IDEAS



What do we WANT to, and what CAN we, offer?

We aim to work 'seamlessly' alongside our partners as the creative and design phases develop. We adapt and mould our role to make sure our contribution is exactly how our partners envisaged it to be.



Follow this link



LA BOTTEGA DEL FALEGNAME



FLOW

Addresses each project down to the smallest detail:

- the materials (the most suitable, the most unusual, etc.)
- the final finish,
- the colours.

Provides samples.

Carries out surveys and inspections wherever necessary.

Constructs mock-ups.

Appoints a technical project executive.



AND MAKES IT UNIQUE!

What do we WANT to, and what CAN we, offer?

We avoid simply proposing a standard catalogue finish, but prefer to research, suggest and propose *THE* perfect finish for a specific project, *THE* most suitable material, *THE* ideal colour for the perfect project.

There is *NO* standard catalogue finish.



Follow this link



LA BOTTEGA DEL FALEGNAME



Has its own in-house manufacture of each piece.



Coordinates all activities performed by external suppliers

FLOW

Tests each item in its in-house workshop

Works alongside the customer and supplier to assess any proposed modifications and/or improvements

Performs final finishing activities

Test and inspects furniture mounting and assembly

Produces dedicated tailored packaging



**...AND INVITES YOU TO
GET ACTIVELY INVOLVED!**

What do we WANT to, and what CAN we, offer?

Our partners have the opportunity to not only follow the production process with us, step by step, but also be actively involved and - above all - offer their own customers the chance to be actively involved, too.

We want our customers to share that unique experience of being an 'active' part in the creation of a product that will ultimately be solely and exclusively theirs.



Follow this link



LA BOTTEGA DEL FALEGNAME



VARIOUS POTENTIAL SOLUTIONS

- ❶ Personally manages delivery and assembly with its own in-house team, together with, let's say, an almost obsessive attention to detail.
- ❷ Manages the shipment and then sends its own trusted team of trained specialists to carry out the installation.
- ❸ Handles the shipment and offers customers the alternative of personally carrying out the installation themselves,
(and, where required)
- sends its own supervisor to coordinate the installation.



**«THE SAME CARPENTER WHO MANUFACTURED
YOUR CREATION, THEN MOUNTS AND
ASSEMBLES IT IN YOUR HOME»**

What do we WANT to, and what CAN we, offer?

Our role, once again, is to harmonise with our partners' needs and those of the project. We assess each individual case, and adapt our role to suit the circumstances in order to come up with the most appropriate bespoke solution.



LONDON, MAY 2019

BURTON BLUE

june 2019

«I would like my kitchen doors to match my car doors.”»

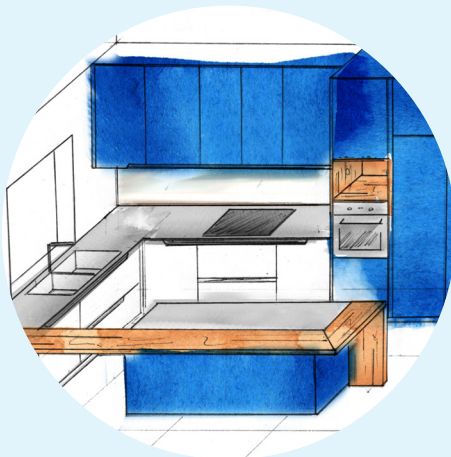
«Fine, we can do any colour»

«No, no... I want you to use exactly the same paint; the same original paint used for the car.»

july 2019



august 2019



An excellent project, but, above all, an absolutely unique situation that required almost total customisation.

september 2019

We ‘learnt’ to lacquer the MDF doors with a paint originally developed for a supercar. Column and wall unit layout was specifically studied to optimise the effect from the ‘cones of light’ streaming through the roof skylights.



october 2019

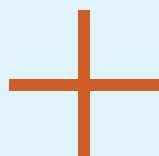
november 2019



Finally, we inserted a professional extraction hood and created a system of hidden handles to allow the customer to open the lowest drawers... with their feet (yes, that’s right!).

december 2019

january 2020



LONDON, FEBRUARY 2020

Scan the QR code to relive the opening night.



