



bemarplast®

30 ANNI DI
ESPERIENZA



Who are we?

With over 30 years of experience, our company specializes in:

- Design and manufacturing of molds
- High-quality thermoplastic injection molding
- 3D printing (MJF and FDM)

We offer a comprehensive service for product analysis and development, from concept to design, with a particular focus on co-design and rapid 3D prototyping.

DETAILS:

State-of-the-art machinery

Highly energy-efficient

Sustainability

100% energy produced from renewable sources



Injection molding

Our injection molding department is equipped with 13 state-of-the-art presses, with capacities ranging from 10 to 480 tons, allowing us to produce plastic components of various sizes and complexities.

We ensure:

- ✓ Precision and consistent quality in molded parts
- ✓ Production flexibility, from prototyping to mass production
- ✓ Use of technical and standard materials, selected based on customer needs
- ✓ Optimization of production cycles to reduce time and costs

Our focus on quality and customization enables us to meet the needs of various industries, offering tailored solutions for every application.

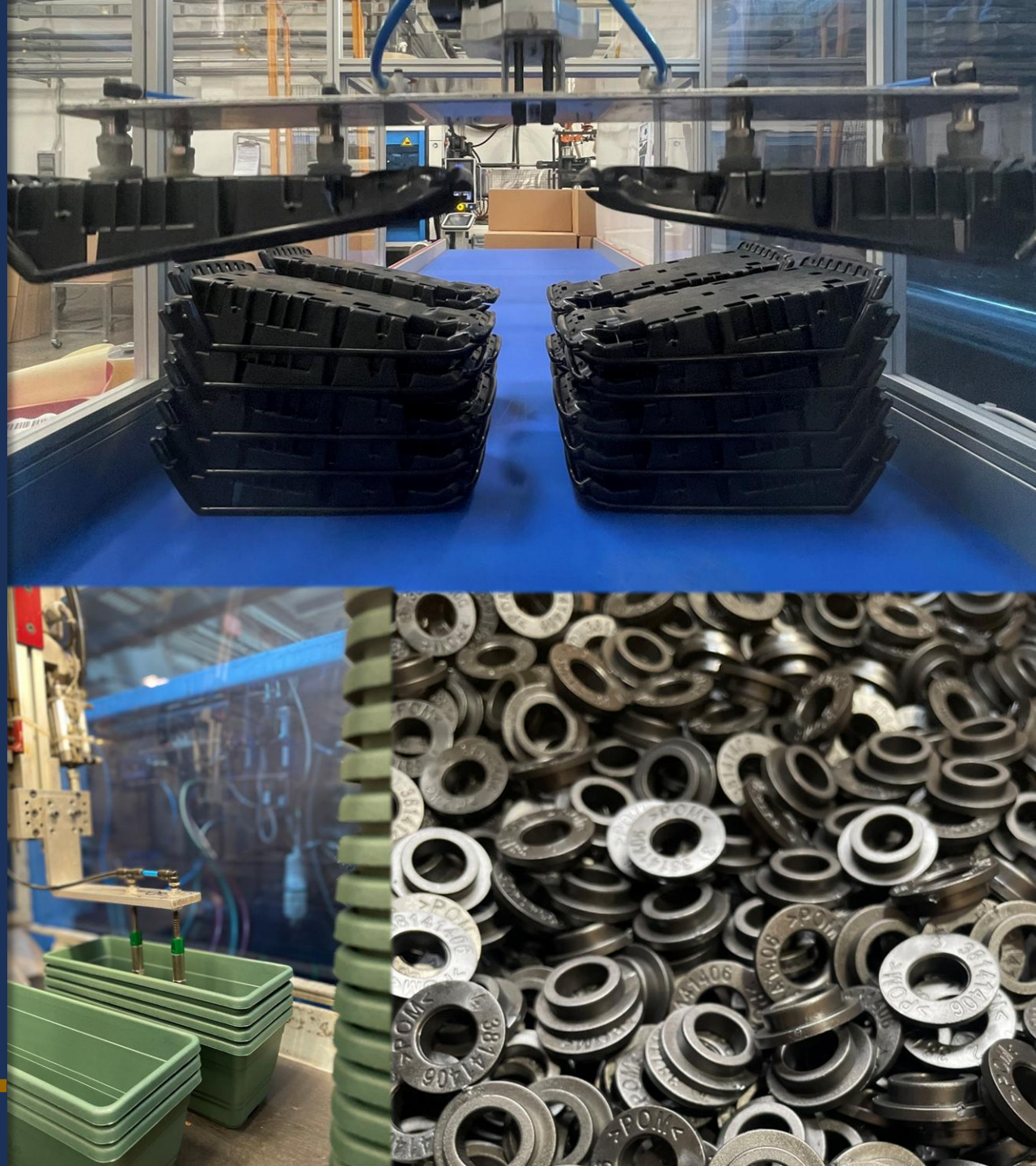
DETAILS:

13 Injection Presses

Latest generation

From 10 to 480 Tons

To make components of various sizes

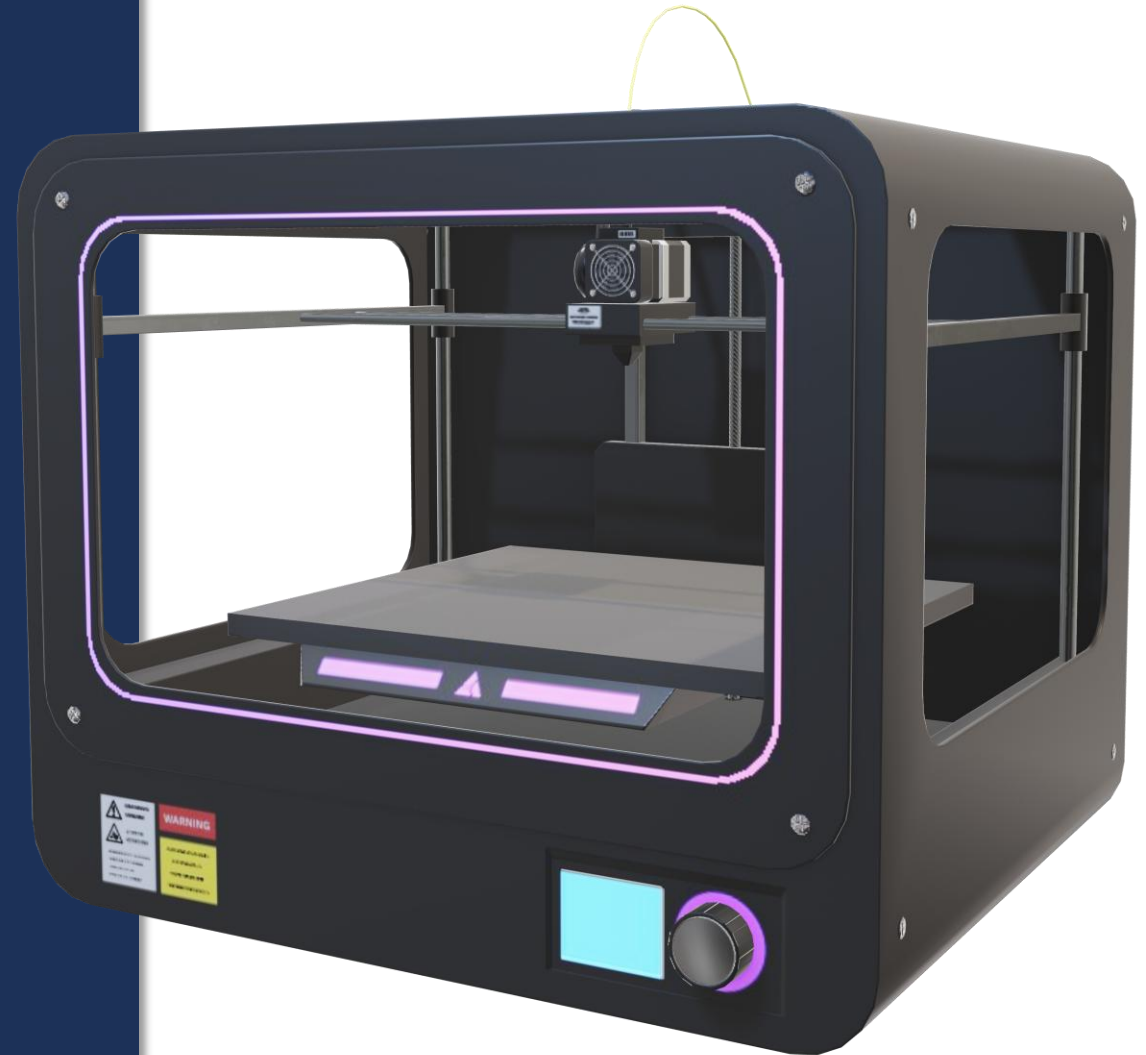


3D Printing for Rapid Prototypes

We offer 3D printing services using MJF and FDM technologies, as well as rapid prototyping for the creation of custom components, reducing initial development time and costs. Thanks to advanced technologies, we can quickly turn ideas and projects into functional prototypes, ideal for testing, dimensional checks, and validation before large-scale production.

- ◆ **Speed and flexibility:** Fast prototype production without the need for molds.
- ◆ **Precision and quality:** Accurate details and high-quality finishes.
- ◆ **Innovative materials:** Choice of polymer resins for additive manufacturing that closely simulate the properties of technical plastics.
- ◆ **Reduced development costs:** Design optimization before final mold production.

Our experience allows us to offer customized solutions, supporting companies across various industries, from automotive and electronics to industrial design.



Design and Production of molds

Our company offers a complete service for the design and manufacturing of molds for injection molding. Thanks to advanced technologies and an experienced team, we support our clients through every phase of the process.

- ◆ **Rapid prototyping:** Creation of functional models to test design and performance before mold construction.
- ◆ **Mold design:** Custom mold development, optimized for efficiency and durability.
- ◆ **Precision machining:** Use of CAD/CAM software and CNC machines to ensure minimal tolerances and maximum quality.
- ◆ **High-performance materials:** Molds made with specific steels to ensure strength and longevity.
- ◆ **Maintenance and optimization:** Ongoing support to ensure maximum mold productivity over time.

Thanks to our experience, we guarantee short lead times, optimized costs, and tailored solutions, adapting to the needs of every industry.



Our experience in the automotive industry

Why choose us as your suppliers for your company

Reliability and Expertise in the Automotive Sector

We are experienced and reliable suppliers for Tier 2-3 companies in the automotive sector. With over thirty years of experience, we specialize in custom injection molding of thermoplastic components, ensuring quality and precision throughout the entire production chain.

Why Choose Us?

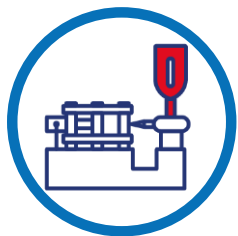
- **Consolidated Experience:** 30 years of activity allow us to meet the most complex demands of the automotive market.
- **Guaranteed Quality:** We use advanced technologies and carefully selected raw materials to ensure high-quality products.
- **Flexibility and Customization:** We design and create tailor-made solutions, adapting to the specific needs of our clients.
- **Punctuality and Reliability:** We meet delivery times, maintain high standards, offer constant support services, and manage order flows with EDI systems.
- **Strategic Partnerships:** We collaborate with Tier 2-3 companies to contribute to the success of their production chain.

Our Mission

To be a trusted partner for the production of plastic components, supporting our customers with innovative, sustainable, and future-oriented solutions.



Our Departments



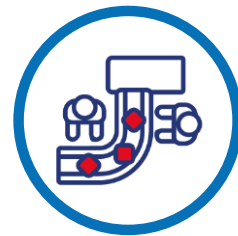
PRODUCTION DEPARTMENT
Injection Molding and Mold Testing



MOLD STORAGE



QUALITY CONTROL LABORATORY



MOLD SHOP
For small maintenance and
immediate repairs



POST-PROCESSING DEPARTMENT
Assemblies, finishes, ultrasonic welding,
pad printing, and laser marking



WAREHOUSE

Analysis and Simulations

We use FEM analysis for thermoplastic polymer structures to optimize the design by identifying critical points, reducing material usage, and predicting deformations under load. This approach allows simulating nonlinear behaviors and thermo-mechanical phenomena, ensuring reliability even under varying thermal conditions. It reduces development time and costs while improving the quality and efficiency of the final product.

With Mould Flow simulations, we optimize the injection molding process by reducing waste, production time, and costs. We can identify defects such as deformations or poor filling in advance, ensuring superior-quality products and faster time-to-market. This means maximizing efficiency and minimizing risks.

DETAILS:

MOULD FLOW Simulations

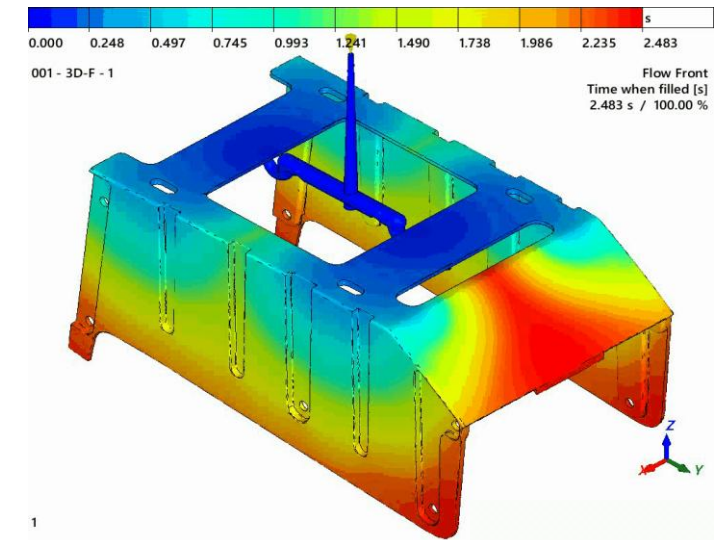
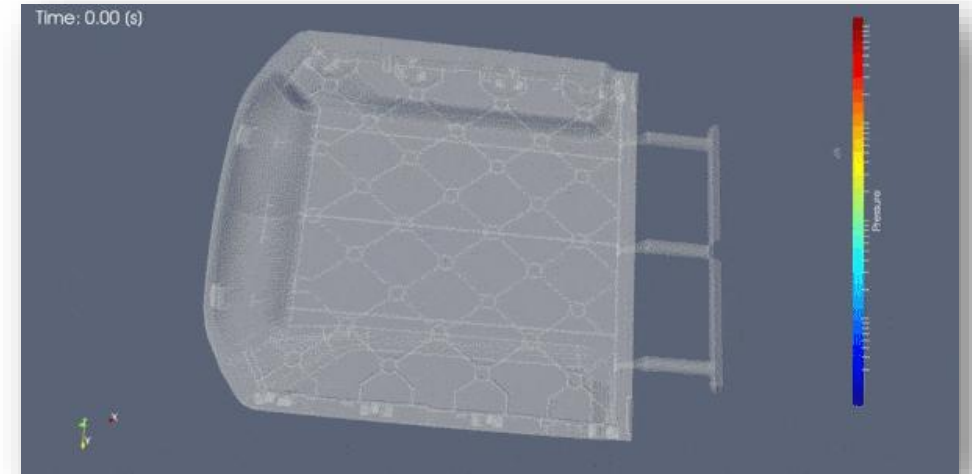
CAE (Computer-Aided Engineering) & CFD

Production Time Optimization

To predict and resolve potential complications

Better Product Quality

To predict and resolve potential critical issues



REPORT DFM and TIMING

To ensure efficiency and quality for your project, we use DFM (Design for Manufacturing) reports and a Project Management approval structure with Gantt charts.

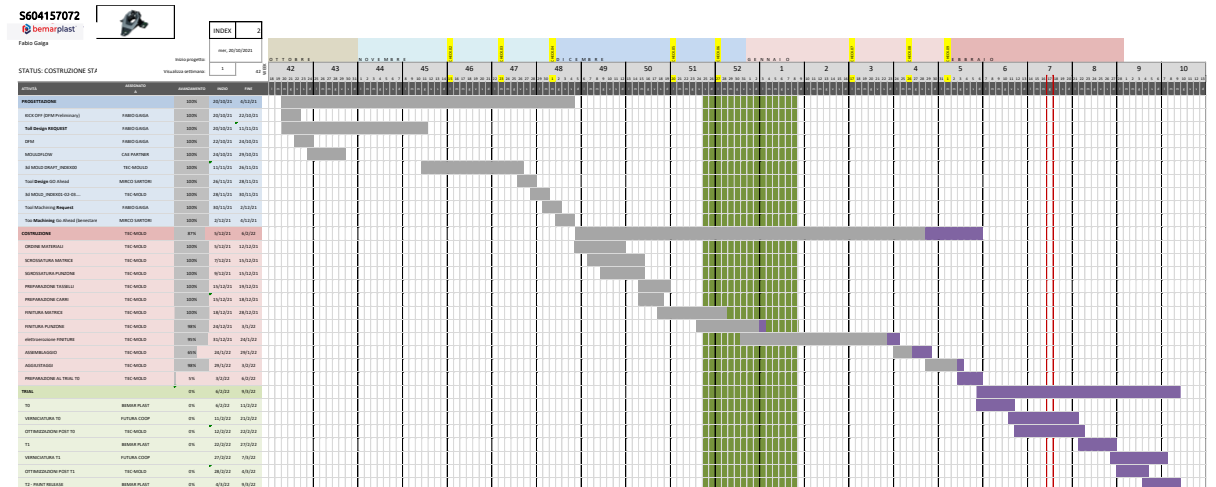
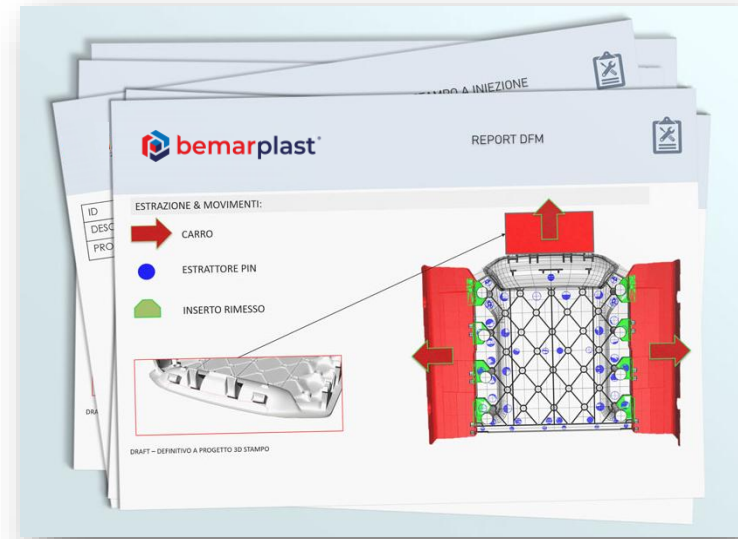
Our DFM reports help evaluate and prevent potential challenges in the injection mold manufacturing process. They are a modern co-design tool, perfect for those leading product development.

At the same time, the Gantt chart monitoring process allows for planning and tracking each stage of the mold construction, ensuring the completion of each phase in sequence and optimal management. In this way, we provide our clients with full monitoring of the entire process of creating equipment specific to the injection molding process.

DETAILS:

Report DFM Draft For Manufacturing

Monitoring and Planning of Stages Gantt Project Management



Future Goals

To improve our company and the quality of our services, we have outlined the following objectives:

- **Green Area Care:** Implement shaded spaces in parking areas and flowered areas to enhance employee well-being.
- **ESG Certification (Environmental, Social, and Governance):** Obtain a formal and independent assessment of our environmental, social, and governance practices, demonstrating adherence to high sustainability standards.
- **Advanced Data Monitoring for Each Order:** Detailed tracking of electrical, water, plastic material consumption, and CO₂ emissions, providing reports to clients to monitor the environmental impact of each product.
- **Automotive Certification IATF 16949:2016:** Achieve the international standard for quality management systems in the automotive sector, focusing on continuous improvement and defect prevention.
- **Implementation of 3D Scanners:** Adopt advanced technologies for quality control, ensuring precision and reliability in production processes.



Our Commitment to the Community

Our company is committed each year to **supporting non-profit organizations** operating in our local area, contributing to the well-being of the community.

We believe that business success should be shared with those in need, which is why we allocate a portion of our profits to causes that are particularly close to our hearts.

This year, we are proud to have contributed to the Cooperativa Sociale Monsceda Onlus, a key reference in our surrounding area, offering cutting-edge services to promote autonomy and support for people with disabilities, the elderly, and individuals facing mental health challenges.

We are convinced that supporting organizations like Monsceda Onlus helps build a more inclusive and supportive society.

A concrete help for a better future.



Who We Work With

Bemarplast is a reliable partner with a solid experience in the production of plastic components for the automotive sector.

We collaborate with companies across various industries, including pumps and compressors, agriculture, medical, automotive, electronics, and construction.

Our flexibility and expertise enable us to tailor solutions to meet the specific needs of each client.



PLASTIC COMPONENTS MANUFACTURER ...



Bemarplast is the ideal partner for those seeking quality and innovation in **the production of plastic components for the automotive sector**. We offer state-of-the-art machinery and specialized know-how to ensure precision, durability, and high performance.

With a strong commitment to sustainability, we use recycled materials and low-energy consumption presses, ensuring an efficient and responsible production process.

Choosing us means relying on experience, technology, and respect for the environment.

OEM We Work With:



PORSCHE



Ferrari



BENTLEY



SKODA



Tel. 045 6550855

