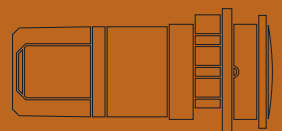
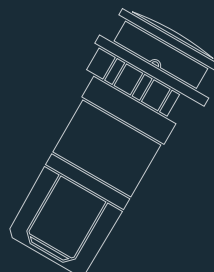
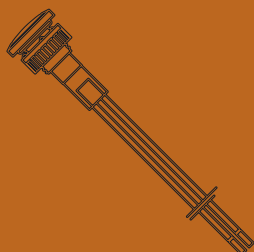
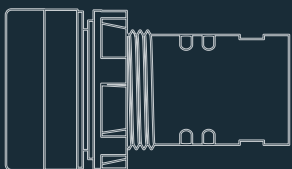
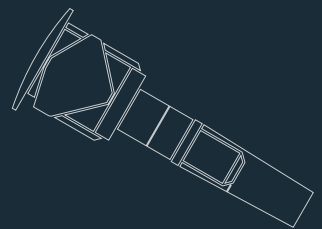
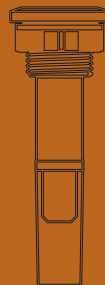
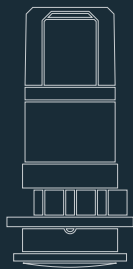
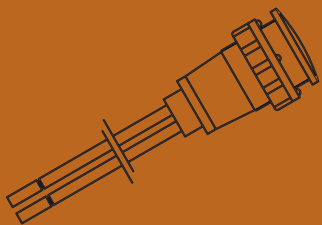


LIGHT SIGNALING SOLUTIONS



Micro-Led spotlight at high light intensity

Starting from standard light indicators, SLIM has developed some **models of LED light indicators at high light intensity**. The micro-LED spotlight lights up the worktop and focus the attention on the beverage preparation, enhancing the chromatic perception.

THE MICRO-LED SPOTLIGHTS HAVE A REAL FUNCTION OF LIGHTING, AND THEY ARE IDEAL TO BE INTEGRATED INTO DISPENSING DEVICES SUCH AS COFFEE MACHINE, JUICER AND WATER DISPENSER.

ACCORDING TO THE LATEST TRENDS IN INTERIOR DESIGN, THE LED BECOMES THE PROTAGONIST OF THE RESTYLING OF DIFFERENT FOOD-EQUIPMENT AND HOUSEHOLD APPLIANCES.

THE LED OPERATES AT FULL POWER AND THE LIGHT IS SUCH THAT IT VISIBLY ILLUMINATES THE REQUIRED AREA UNDER EVERY CONDITION.

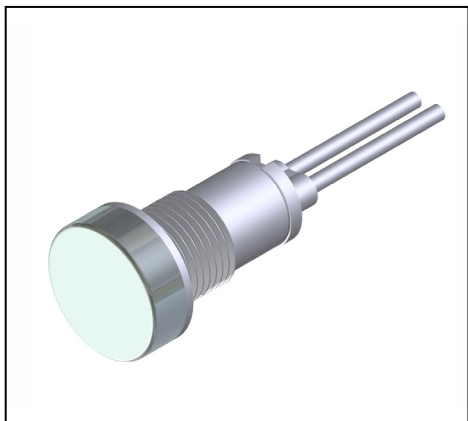


For these new types of working devices, in the version with 230V power, it was chosen an **SMD LED** that allowed to use a condenser of small size, in terms of overall dimensions.

Using a lux meter, we found that the brightness provided by the new light indicator is more than ten times higher than the one provided by a standard LED light operating at full power.



Technical specifications



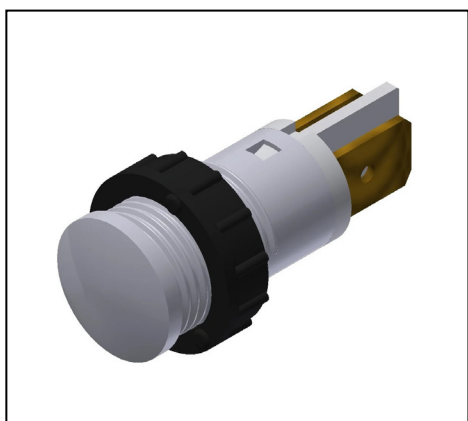
TB/012/CSK model

Drilling hole	12mm
Terminals	Cables
Working voltage	12-230V
Lamps	LED SMD
Lens	CSK



TB/012/SDK model

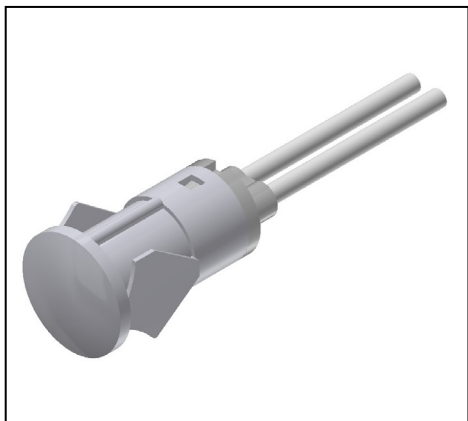
Drilling hole	12mm
Terminals	Cables
Working voltage	12V AC/DC
Lamps	LED SMD
Lens	SDK



TBF/012/SDK model

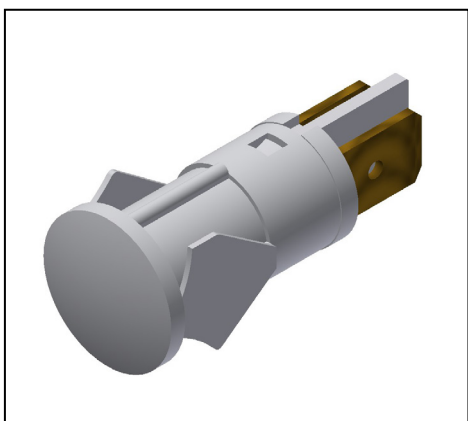
Drilling hole	12mm
Terminals	Faston 6,3x0,8mm
Working voltage	12V AC/DC
Lamps	LED SMD
Lens	SDK

Technical specifications



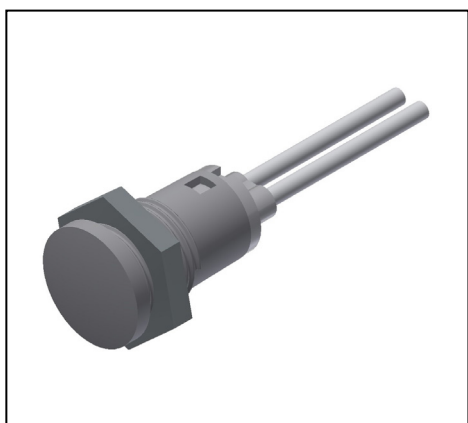
TB/012/SDY model

Drilling hole	12mm
Terminals	Cables
Working voltage	12V AC/DC
Lamps	LED SMD
Lens	SDY



TBF/012/SDY model

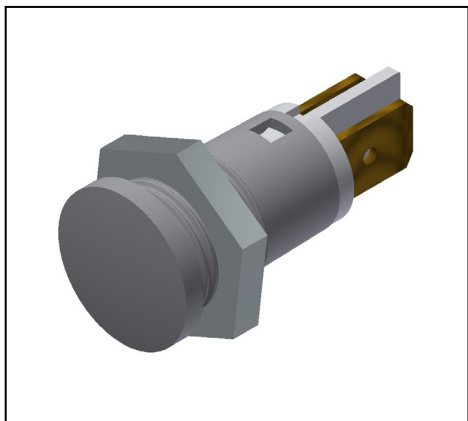
Drilling hole	12mm
Terminals	Faston 6,3x0,8mm
Working voltage	12V AC/DC
Lamps	LED SMD
Lens	SDY



TBF/012/SDK model

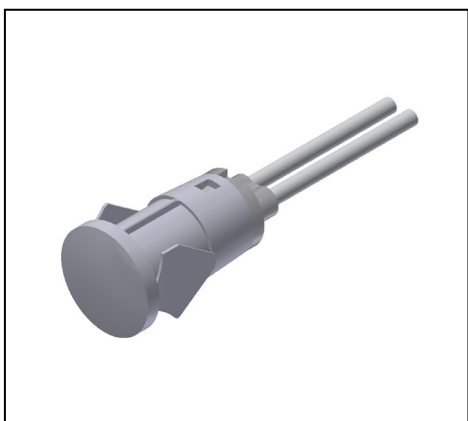
Drilling hole	13mm
Terminals	Cables
Working voltage	12V AC/DC
Lamps	LED SMD
Lens	SFK

Technical specifications



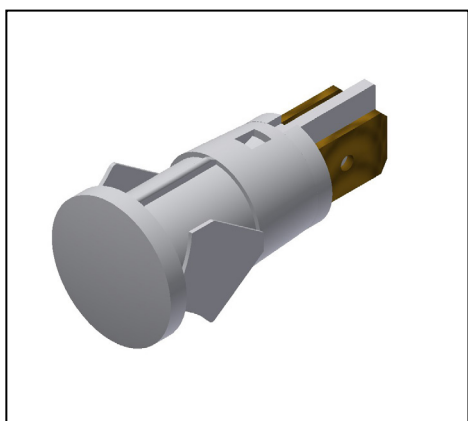
TBF/013/SFK model

Drilling hole	13mm
Terminals	Faston 6,3x0,8mm
Working voltage	12-230V
Lamps	LED SMD
Lens	SFK



TB/013/SFY model

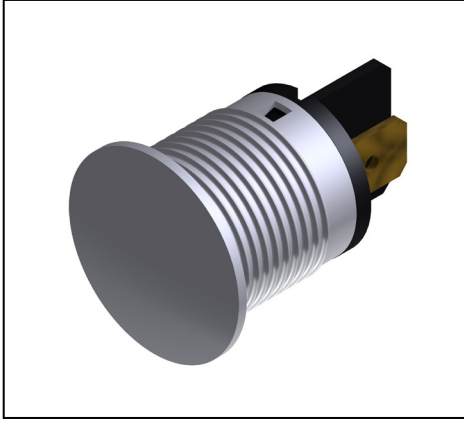
Drilling hole	13mm
Terminals	Cables
Working voltage	12V AC/DC
Lamps	LED SMD
Lens	SFY



TBF/013/SFY model

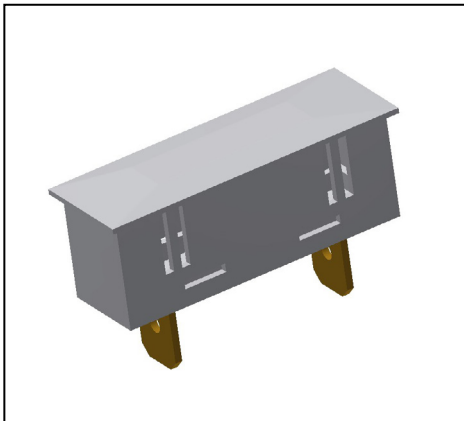
Drilling hole	13mm
Terminals	Faston 6,3x0,8mm
Working voltage	12V AC/DC
Lamps	LED SMD
Lens	SFY

Technical specifications



TBF/018/CFK model

Drilling hole	18mm
Terminals	Faston 6,3x0,8mm
Working voltage	12-230V
Lamps	LED SMD
Lens	CFK



UR/L model

Drilling hole	34,2mm x 10,5mm
Terminals	Faston 6,3x0,8mm
Working voltage	12vdc
Lamps	LED SMD

The advantages of this solution

- **High** luminous **efficiency**;
- **Low** energy **consumption**;
- Greater **safety of the device** which has a low voltage;
- **Low working temperature of** the circuit, which prevents overheating of the final application;
- **Made in Italy** technology;
- Possibility of **customization** according to customer requirements.



Vandal-proof light indicators

Starting from standard light indicators, SLIM has developed **three models of vandal-proof indicators**, which are **more performing against impacts and some invasive and corrosive cleaning substances**.

Following some requests that came from both the domestic and foreign market, the technicians and the engineers of the R&D department realized a **nickel-plated version** and a **polished chrome-plated brass version**.

The two different variants give the product a unique aesthetic, making the models of signallers suitable to be installed in different devices.

Customers can choose the configuration they prefer by customizing the color of the lens and the type of panel connection.

DUE TO THE SPECIAL STRUCTURE, THE VANDAL-PROOF INDICATOR IS IDEAL TO BE INSERTED IN ALL THIS EQUIPMENT WHICH IS IN DAILY CONTACT WITH WATER, CLEANERS AND DUST: FOR INSTANCE EQUIPMENT FOR PROFESSIONAL CATERING KITCHENS.

Characteristics



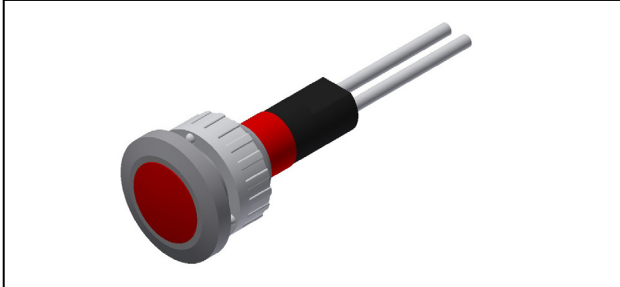
- ↘ Chrome-plated brass beacon body
- ↘ Metal head
- ↘ First o-ring placed between the central white diffuser and the metal body
- ↘ Second o-ring placed between the panel hole and the metal head
- ↘ IP65 protection degree from the front of the panel
- ↘ VDE, UL / CSA certified indicators for the European and North American market

Professional and industrial kitchen equipment including: cooking systems, refrigeration systems, washing machines, and glasswashers.

Small and large household appliances.

Electromedical equipment and devices for the medical sector.

Technical specifications



TB/010 model

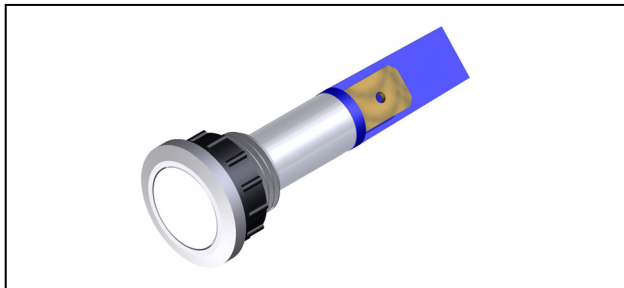
Lamps	Incandescent, neon/fluoro, LED
Working voltage	From 2V to 400V
Working temperature	90°C Max - 120°C Max - 150°C Max
Hole dimensions	10mm
Type of connection	PVC cable - silicone cable - silicone-glass cable
Lens color	Transparent, red, orange, green, blue, opal white



TB/012 model

Lamps	Incandescent, neon/fluoro, LED
Working voltage	From 2V to 400V
Working temperature	90°C Max - 120°C Max - 150°C Max
Hole dimensions	12mm
Type of connection	PVC cable - silicone cable - silicone-glass cable
Lens color	Transparent, red, orange, green, blue, opal white

Technical specifications



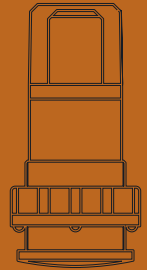
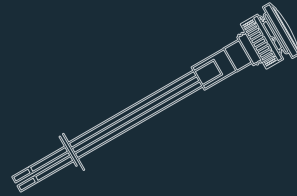
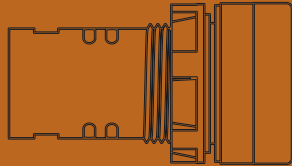
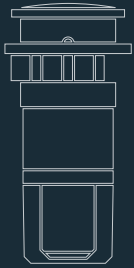
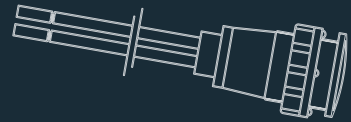
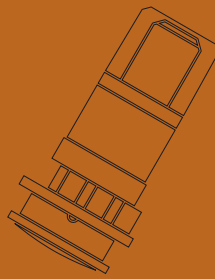
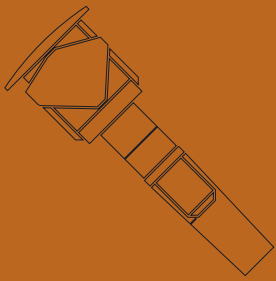
TBF/012 model

Lamps	Incandescent, neon/fluoro, LED
Working voltage	From 2V to 400V
Working temperature	120°C Max - 150°C Max
Hole dimensions	12mm
Type of connection	Faston 6,3x0,8mm - faston 4,8x0,8mm
Lens color	Transparent, red, orange, green, blue, opal white

The advantages of this solution

- **Mechanical and chemical resistance;**
- **Dust and wear resistance** over time;
- **Strength of the components;**
- Greater safety **features;**
- Higher **industrial reliability;**
- High **luminous efficiency** in the LED version;
- Possibility of **customization** according to customer requirements.





Via dei Tigli, 14/16 (Z.I)
20853 - Biassono (Monza Brianza) - Italy
Tel. +39 039 492.115 - 490.745 - 491.652
Fax. +39 039 491.654
E-mail: commerciale@slim.it

