



# SYSTEMA S.p.A. COMPANY PROFILE

---

2022

# R&D AND PRODUCTION ANAGNI (FR)

1800 sqm where the following activities are performed:

- Research and Development about hardware, software and method applications
- Production, assembling and tests
- Promotion and sales
- After sales support.

Certifications:

- ISO-9001:2015
- TUV



*Company established in 1988*

## BUSINESS OBJECTIVES

- **Development and production of analyzers to measure chemical parameters in water**
- **Automation of international standard methods**
- **Continuous R&D of new technologies and products, improvements and updates of current ones**
- **Products' adaptation following the requests of end users and partners, new methods and applications development**



# BUSINESS SECTORS

- ROUTINE LAB - ON LINE - PORTABLE – IN SITU ANALYZERS
- WATER AND WASTE WATER TREATMENT PLANTS CONTROL
- ENVIRONMENTAL MONITORING
- DRINKING WATER CONTROL
- INDUSTRIAL WATER PROCESS CONTROL
- SEA WATER MONITORING
- WINES AND BEVERAGES QUALITY CONTROL
- SOIL AND LEAVES LIQUID EXTRACTS
- TOBACCO LIQUID EXTRACTS QUALITY CONTROL
- EARLY WARNING AND ENVIRONMENTAL WATER QUALITY MONITORING STATIONS



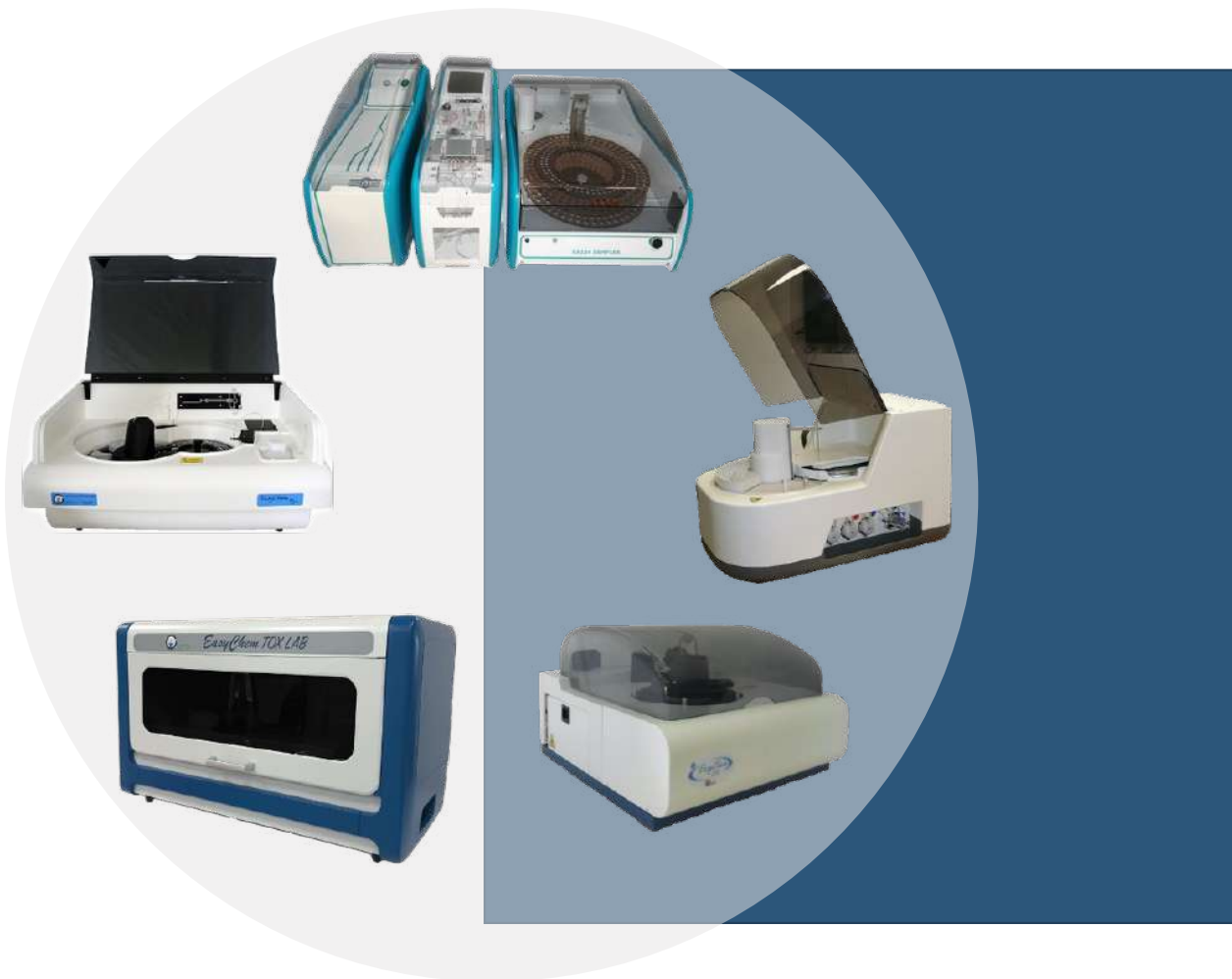
# ROUTINE LABORATORY ANALYZERS

- EASYCHEM PLUS
- EASYCHEM JUNIOR
- EASYCHEM 200
- EASYCHEM TOX
- FLOWSYS

## APPLICATIONS:

- Surface, potable waste and sea water\*
- Soil, fertilizers and leaves liquid extracts
- Tobacco liquid extracts
- Wines and beverages quality control

\* Methods reference: APAT - ISO - SM - EPA





# ON LINE ANALYZERS

- **Micromac C:** Colorimetric, Amperometric, Voltammetric, Fluorimetric
- **Micromac Mini:** Colorimetric, Fluorimetric
- **Micromac ECO:** pH/Turbidity/COD(UV)/BOD
- **Easychem On Line:** Acute toxicity, Coliforms, Colorimetric

## APPLICATIONS:

- Inlet/outlet WWTP control
- Inlet/outlet WTP control
- Drinking water
- Surface water
- Sea water



# PORTABLE ANALYZERS

- **Micromac 1000:**  
Colorimetric, on line & portable
- **Micromac Smart:**  
Colorimetric, portable
- **Micromac SmarTox:** Acute toxicity, portable

## APPLICATIONS:

- Drinking water quality control
- WWTP effluents control
- Early warning portable field systems
- Mobile environmental control systems



# IN-SITU ANALYZERS

- **WIZ (Water In Situ Analyzer):**  
Colorimetric e fluorimetric

Multiparametric compact in-situ probe, awarded in 2017 in Nutrient Sensor Challenge organized by US government.

*«The next step is to get these next-generation sensors into the hands of users to help stop the nutrient pollution problem.»*

**Mario Tamburri**

*Director of Alliance of Coastal Technologies*

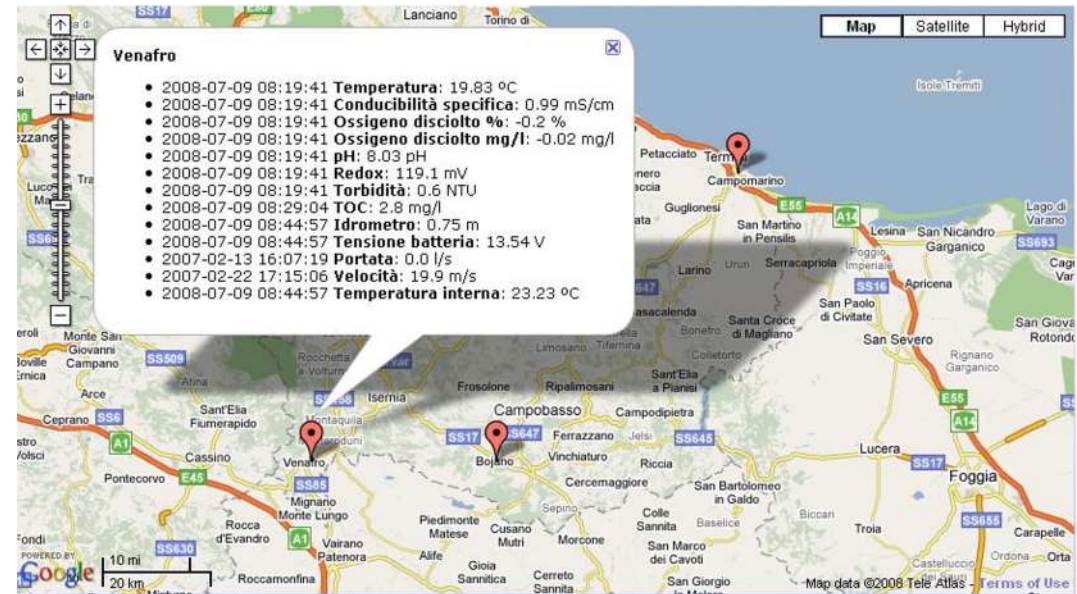




# ENVIRONMENTAL MONITORING STATIONS

- +100 environmental water quality monitoring stations installed
- Web based remote control and management systems full in-house developed
- Measurement data are near real time accessible with automatic generation of alarms after threshold overlaps or system malfunctioning

**Our Customers:** ACEA (Tiber and Aniene rivers), ARPAT, ARPAC, ARPAV, ARPAL, ARPAE, Ruzzo Reti, Gran Sasso Acque, Acquedotto Pugliese, Cap Holding, SMAT



# MANAGEMENT TEAM



**POMPEO MOSCETTA**  
CEO/CTO & FOUNDER

+45 years experience in  
HW, FW, fluidics e  
mechanics development  
for automated chemical  
analysis instrumentation



**PIETRO MOSCETTA**  
CTO/CIO CO-FOUNDER

+25 years experience in  
HW, SW e FW  
development



**LUCA SANFILIPPO**  
MARKETING DIRECTOR

+30 years experience in  
environmental air and  
water quality  
monitoring



**MARCO DE ANGELIS**  
TECHNICAL DIRECTOR

+40 years experience in  
environmental water  
quality and food  
sectors



**ENRICO SAVINO**  
R&D APPLICATIONS AND  
METHODS MANAGER

+35 years experience in  
development of new  
methods and  
applications for chemical  
analysis



# THANKS FOR YOUR ATTENTION



info@systea.it



<http://www.systea.it/>