

INTRAORAL
SCANNER

IATON 3+

ERGONOMIC,
PRECISE
PLUG & PLAY



88dent.com

02.8853 - info@88dent.com

Via Pitagora 12 Pero (MI)





Button Control

The tinybutton carries great responsibilities, controlling the entire digital workflow. It prevents cross contamination by not touching the screen or clicking the mouse. Safety is always the top priority.



Motion Sensing

The gyroscope inside the scanner allows to see different angle of scanned images by just simply rotating the scanner. So you do not have to touch the screen to see the image.



NEW DESIGN

Features

Product Features

- AI Technology, much smarter, improve a lot of scanning experience
- 3 Different tips, meet more demands of different applications
- Much smaller, very easy to operate
- Clear margin line, high accuracy
- Fast scanning speed, easy to learn and use
- True color scan and HD display



Application Features

- **High resolution and true image**

- Reproduce the real state of teeth
 - Accurate anatomical features
 - 3D high-definition color, visual communication
 - Easy and exciting treatment experience

- **Various range of software**

- Clear and easy Margin Line drawing Pre-op Scan available for Implant and restoration Comparison of two sets of data such as denture and full arch Enhanced scanning option for Veneer

- **Case selection and finalized report**

- Auto Preparing the case report to the labs
 - Various options to select in reports such as Bridge or Crown
 - Convenient tools for clinics and laboratories

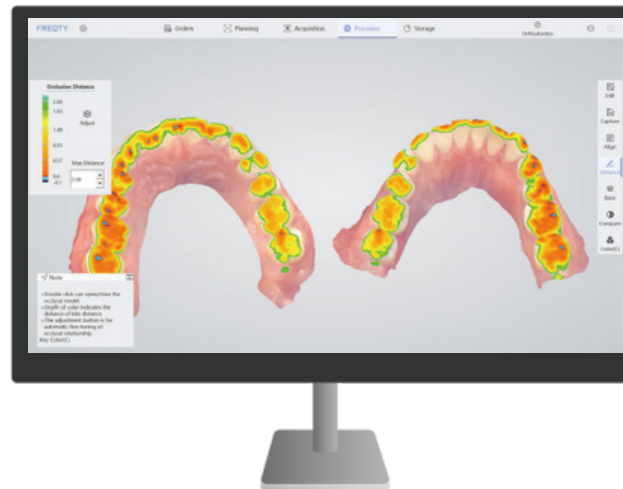
- **Multiple platforms to access the case**

- 3D preview allows to be accessed via the phone
 - Share the cases to patients immediately after scanning
 - Fully prepared case reports to the labs
 - One click link directs to EXOCAD

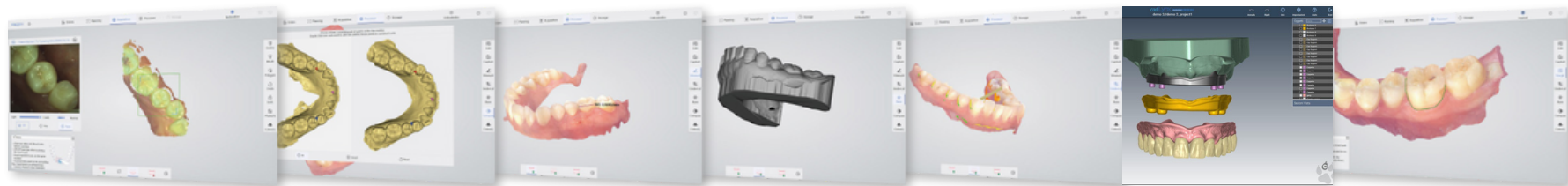
- **Revolutionary Improvement ***

- Scanning speed improve 70%
 - Handpiece weight decreases 10%
 - Data accuracy improves 30%
 - Height of tips decreases 14%

*Compared to the P2



• Bite Check



2D Image
Store

Case
Comparison

Teeth
Measurement

Base Adding

Undercut

Direct Export
into Cad Lynx
Evolution

Margin
Line
Drawing

Applications



Restoration

Accurate and clear shoulder margin brings efficient design, and high-definition color images help dentists effectively distinguish between gingiva and teeth. One visit, immediate restoration.



Implant

Fast scanning with a large field of view, easily capture 3mm data of cuff, and accurately scan of metal path pin. No need to do repeat impression and improve patient treatment experience.



Orthodontics

High accuracy of the full dentition, restore the real state of full arch. Get orthodontic treatment quickly, and save time for more patients.

Parameters

1 min
Full Arch Scanning

5 tips
with 3 Different Angles

10 μ m
More Precise

228 g
Aviation Aluminum Alloy

Overall Size

216 x 40 x 36 mm



Tip End

19.6 x 14.6 mm Autoclavable

Field of View

18 x 16 mm

Depth of Field

0~15 mm (Adjustable up to 20mm)

Patents

40+

Certificates

CFDA/CE/ISO13485/FDA/INMETRO/ANVISA, etc.

Interface

USB3.0

Data Output

STL PLY PTY *encrypted data available

PRODUCT INFORMATION

| Category | iAton2 |
|--------------------------|--|
| Technology | Starting Scanning with Coded Structure Light |
| Camera Number | x 3 |
| Scan Field | 18x16mm |
| Scan Depth | 0-15 mm (Adjustable up to 20mm) |
| Accuracy | ≤15μm |
| Precision | ≤10μm |
| True Color | Full HD |
| Anti Fog System | Intelligent Heating |
| Full Arch ScanningTime | 1 min |
| Handpiece Enclosure | Aviation Aluminum Alloy |
| Handpiece Dimension | 216 x 40 x 36 mm |
| Handpiece Weight | 228g |
| Tip Types | 3 types (N/M/D) |
| Number of Tips included | x 5 (Autoclavable) |
| Tip AutoclaveCycle | 20-50 times |
| Calibrator | Automatic |
| Scanning Control | Button |
| Data Interface | USB3.0 |
| Cable Length (m) | 2m |
| Power Supply Type | AC/DC Medical Power Adapter |
| Supply Voltage (V) | 100-240V/50-60Hz |
| Supply Current (A) | 0.7-1.5A |
| Storage Temperature (°C) | -10°C-55°C |

AFTERSALES

| Category | iAton2 |
|-------------------|---------------------|
| Standard Warranty | 1 year |
| Extended Warranty | 2-3 years available |

SOFTWARE

| Category | iAton2 |
|--------------------------------------|---|
| Types of Scanning | Orthodontics, Implant, Restoration |
| Image Capture | Yes |
| 3D Data Preview | Yes |
| Output Files | STL, PLY, PTY (encrypted for user) |
| Cloud Service | Yes |
| Cloud Service Price | 5GB/free |
| Direct Compatibility with Dental CAD | Cad Lynx Evolution |
| Main Image Processing Tools | Trim/Edit/Recover/Lock, etc. |
| Margin Line Drawing | Yes |
| Occlusal Match | Yes |
| Undercut | Yes |
| Data Comparison | Yes |
| AI Technology | Auto Tissue Remove, Overlap Correct, etc. |
| Software License | Free |
| Software Upgrade | Free |
| Transfer Data with API | Available |

*All names, logos, brands and other trademarks featured or referred to within this brochure are the property of their respective trademark holders.

PC REQUIREMENTS

| Category | iAton2 |
|------------------|--|
| CPU RAM Hard | Intel i7-12700H/Intel i7-11800H or above |
| disk GPU | 16G/32G |
| Operating system | SSD 512G or above |
| Display | RTX2060/RTX3060 or above |
| | Windows10/11 64bit |
| | Resolution 1920×1080 and above |

*Check the PC Recommendation Catalog on our website for more detail.



88dent.com
info@88dent.com

