

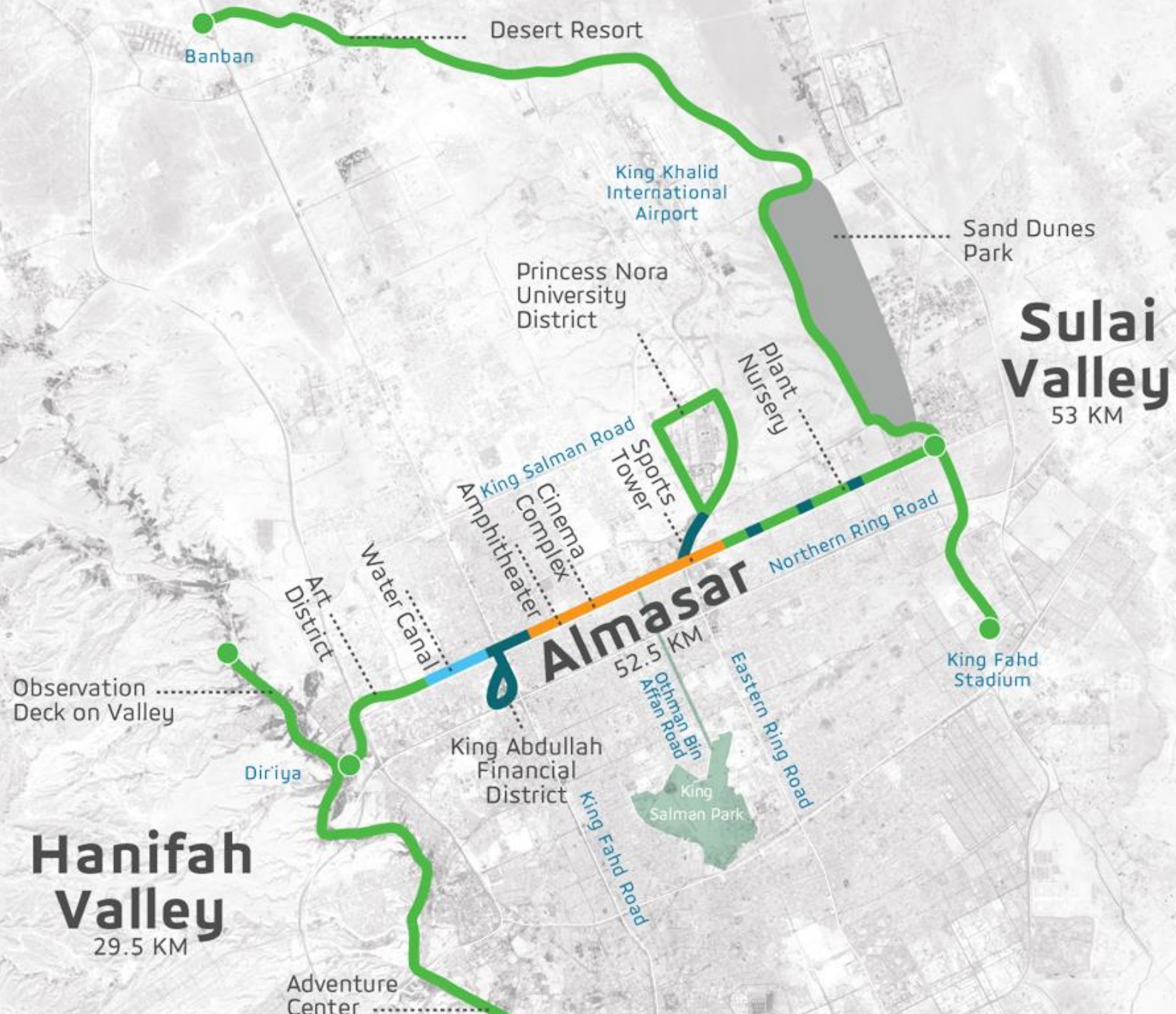


ITALIAN TRADE AGENCY

ICE - Agenzia per la promozione all'estero e
l'internazionalizzazione delle imprese italiane

Sports Boulevard Project





Banban Desert Resort

King Khalid International Airport

Sand Dunes Park

Sulai Valley
53 KM

Princess Nora University District

Plant Nursery

King Salman Road
Sports Tower
Cinema Complex
Amphitheater

Northern Ring Road

Almasar
52.5 KM

King Fahd Stadium

Art District

Water Canal

Observation Deck on Valley

Dir'iya

King Abdullah Financial District

Othman Bin Affan Road

Eastern Ring Road


King Salman Park

King Fahd Road

Hanifah Valley
29.5 KM

Adventure Center

- **The Sports Boulevard is one of Riyadh's four ambitious projects, launched by the Custodian of the Two Holy Mosques King Salman Bin Abdulaziz on 19 March 2019.**
- 

- **The project is a key component of the Saudi Vision 2030 and stated goal of becoming one of the top 100 cities in the world, eventually achieving the highest ranking possible.**
- 

- **In its quest towards achieving this distinction the Sports Boulevard will encourage the citizens of Riyadh to follow a healthy lifestyle through exercise and participation in various sporting activities.**
-



TTA 

ITALIAN TRADE AGENCY

ICE - Agenzia per la promozione all'estero e
l'internazionalizzazione delle imprese italiane

A Lifestyle



- **The Sports Boulevard extends for 135 kms, across the city of Riyadh, connecting Hanifah valley in the West with Al Salai Valley in the East. The Sports Boulevard has safe, green pathways for pedestrians along the whole project. There are special routes for professional and amateur cyclists, horse riding paths, and designated sites for sporting activities, which include a Sport Tower – a high rise building that has courts for different indoor sports.**

ITTA®

ITALIAN TRADE AGENCY

ICE - Agenzia per la promozione all'estero e
l'internazionalizzazione delle imprese italiane

Expect More



- **The Sports Boulevard provides 4.2M sqm of green and open space sites covering more than 3.5 square kilometers. There will be a desert park of 20 sq km, including event venues, show piazza, outdoor museums and movie theaters. There will also be areas designated for investment zones, as well as recreational and commercial activities. There will be many landmarks and public art installations that will enrich the cultural lifestyle in the city of Riyadh.**

Main Zones



-
- **The main zones of the Sports Boulevard include:**



Hanifah Valley Zone

- It covers a distance of 30 km from Al Olab Dam in historical Diyriah (north), to Al Madina Al Monawara Road (south).
- This route will be dedicated to professional and amateur cyclists. It will also feature green pathways for pedestrians and horse riders.
- It will have 7 stops along the valley route. There will also be a bike maintenance center, various coffee shops and retail outlets.



Arts District

This will extend for 3 km, from King Khalid Road (west) and will have cultural, art and recreational facilities.

There will be pedestrian, cycling and horse-riding paths, as well as sitting areas.

There will also be a collection of museums, libraries, studios, art forums, conference halls and locations set aside for investment.



ITALIAN TRADE AGENCY

ICE - Agenzia per la promozione all'estero e
l'internazionalizzazione delle imprese italiane



Urban Wadi Zone



It covers a distance of 3.5 km and is located alongside Al Aysen valley, from Suwaid bin Harthah Road to King Fahad Road (west).



It will have a water canal.



In addition to having pedestrian pathways, bike paths, seating and potential investment areas, Al Aysen Zone will also connect to King Abdullah Financial District through an elevated road.



ITALIAN TRADE AGENCY

ICE - Agenzia per la promozione all'estero e
l'internazionalizzazione delle imprese italiane



Entertainment District



Set between King Fahad Road (west) and Othman bin Affan Road, it covers a distance of 4 km.



It will have a 40 km long viaduct for professional cyclists, in addition to an at-grade track for amateur cycling.



This zone will boast a theater, cinema complexes, and an outdoor movie theater.



Events sites and interactive audio-visual shows will also be available.



It will include several parks, gardens and open spaces equipped with a cooling system for the summer season.



These elements will overlook business, residential and commercial facilities that will be available to potential investors.

ITA



ITALIAN TRADE AGENCY

ICE - Agenzia per la promozione all'estero e l'internazionalizzazione delle imprese italiane

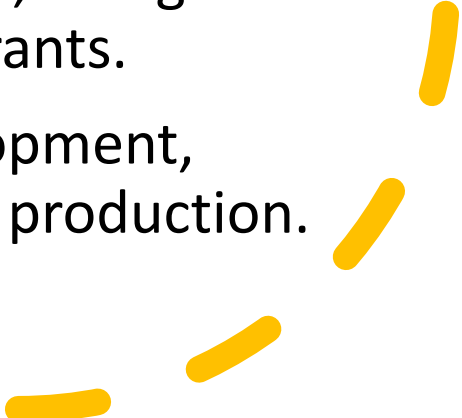


Athletics District

- It will extend from Othman bin Affan Road to Airport Road (east) for a distance of 5 km.
- It will include 60 sports sites, featuring 16 football pitches, 18 covered courts for basketball and tennis, 12 courts for volleyball and a venue for skiing.
- The Sports Zone will be connected by a side road to Princess Nora bint Abdul Rahman University.
- The iconic sports tower – a high rise building – will be inside the sports zone and will have courts for men and women.
- There will be a number of courts and training halls for different sports such as: jogging, golf, boxing, basketball, tennis, badminton, swimming, archery and ice hockey.
- Lower floors will have a velodrome, including one underground, next to the tower.



Environmental Zone

- It will run for 14 km, from Airport Road to Al Janadriyah Road, along the Al Sulai valley.
 - This zone will have an elevated route for professional cyclists and one at-grade route for amateur cyclists.
 - It will feature tracks for pedestrians and joggers, connected to nearby neighborhoods.
 - Several centers will be constructed to educate residents on planting flowers, organic food and environmental sustainability.
 - Residential complexes will also be built, along with retail outlets, coffee shops and restaurants.
 - There will be nurseries for seed development, agricultural products and organic food production.
- 



ITALIAN TRADE AGENCY

ICE - Agenzia per la promozione all'estero e
l'internazionalizzazione delle imprese italiane



Al Sulai Valley Zone



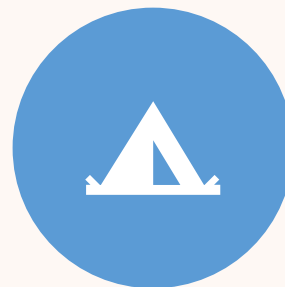
It will be located along Al Sulai Valley, from King Fahad Stadium to Binban Park, over a distance of 53 km.



It will feature routes for professional cycling, horse riding, and green pedestrian pathways

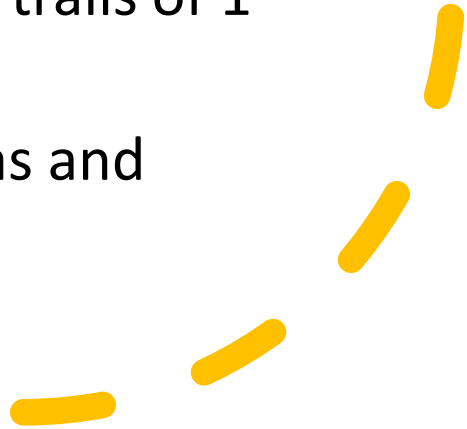


It will have 15 stations along the valley including coffee shops, retail outlets, and a bike maintenance center.

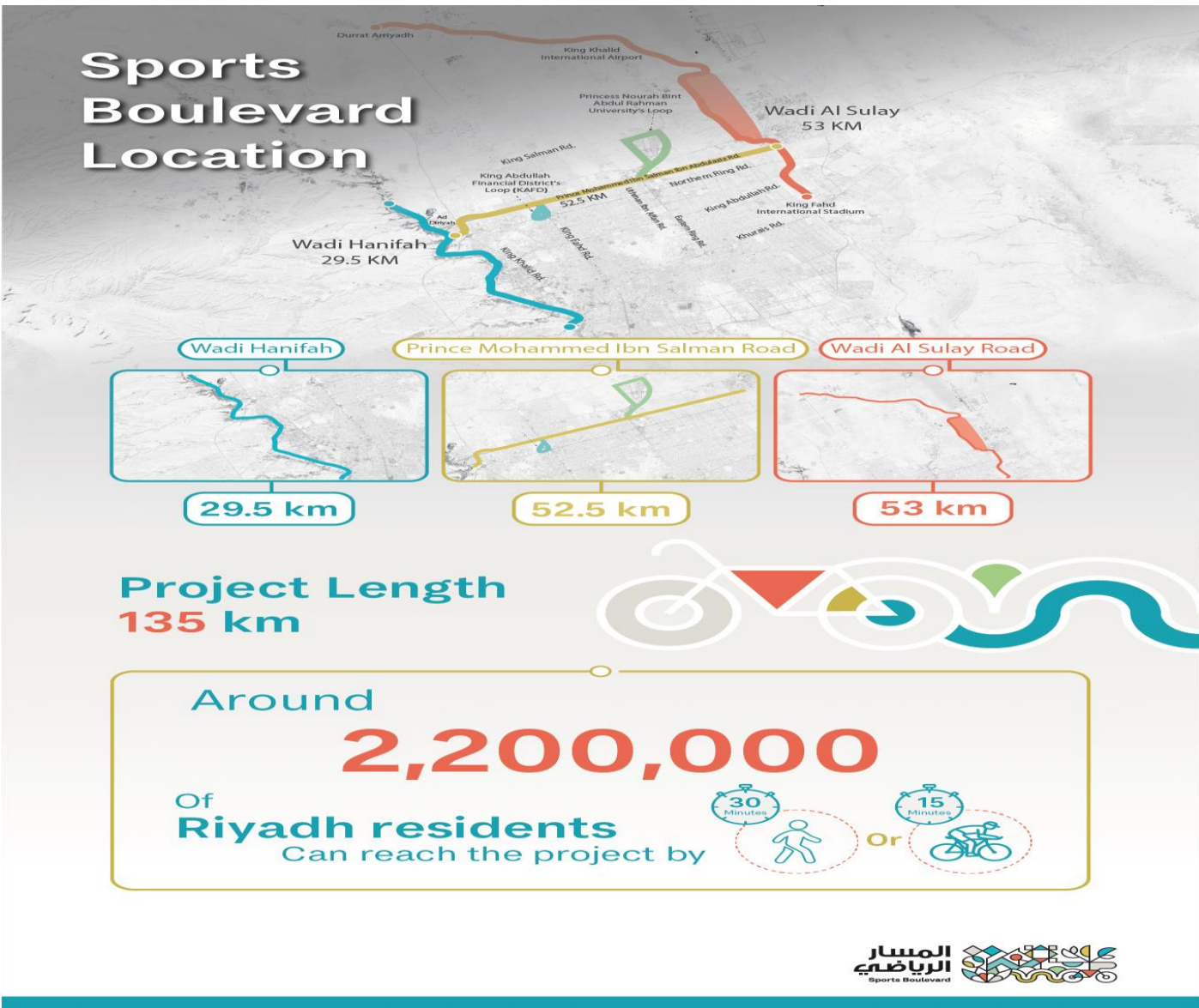


It will also feature picnic and camping areas.

Red Sand Park

- A rural resort with different residential facilities.
 - A zoo spread over 5 sq km.
 - It will have a distinctive landmark – a curved cycling track in the shape of a flower, gradually rising 50 meters above the ground, to allow cyclists to enjoy the impressive view from the top.
 - It will be situated in the sandy areas – south-east of King Khaled International Airport, covering over 20,000 sq km.
 - This park will have professional cycling paths.
 - An equestrian center and horse-riding trails of 1 million sqm.
 - It will feature a visitor center, rest areas and gathering points for cyclists.
- 

Sports Boulevard Location



-
- **User guide vendor portal:**
 - <https://sportsboulevard.sa/static/0ae067fe67d70716cd84b40cdf52ff28/SBF-User-Guide-Supplier-Portal.pdf>
 - **required certificates:**
 - <https://sportsboulevard.sa/static/76fd594517a090486fd871ff81db6c8f/Required-Certificates-updated.pdf>
 - **for registration as supplier:**
 - <https://sportsboulevard.sa/en/register-now>