

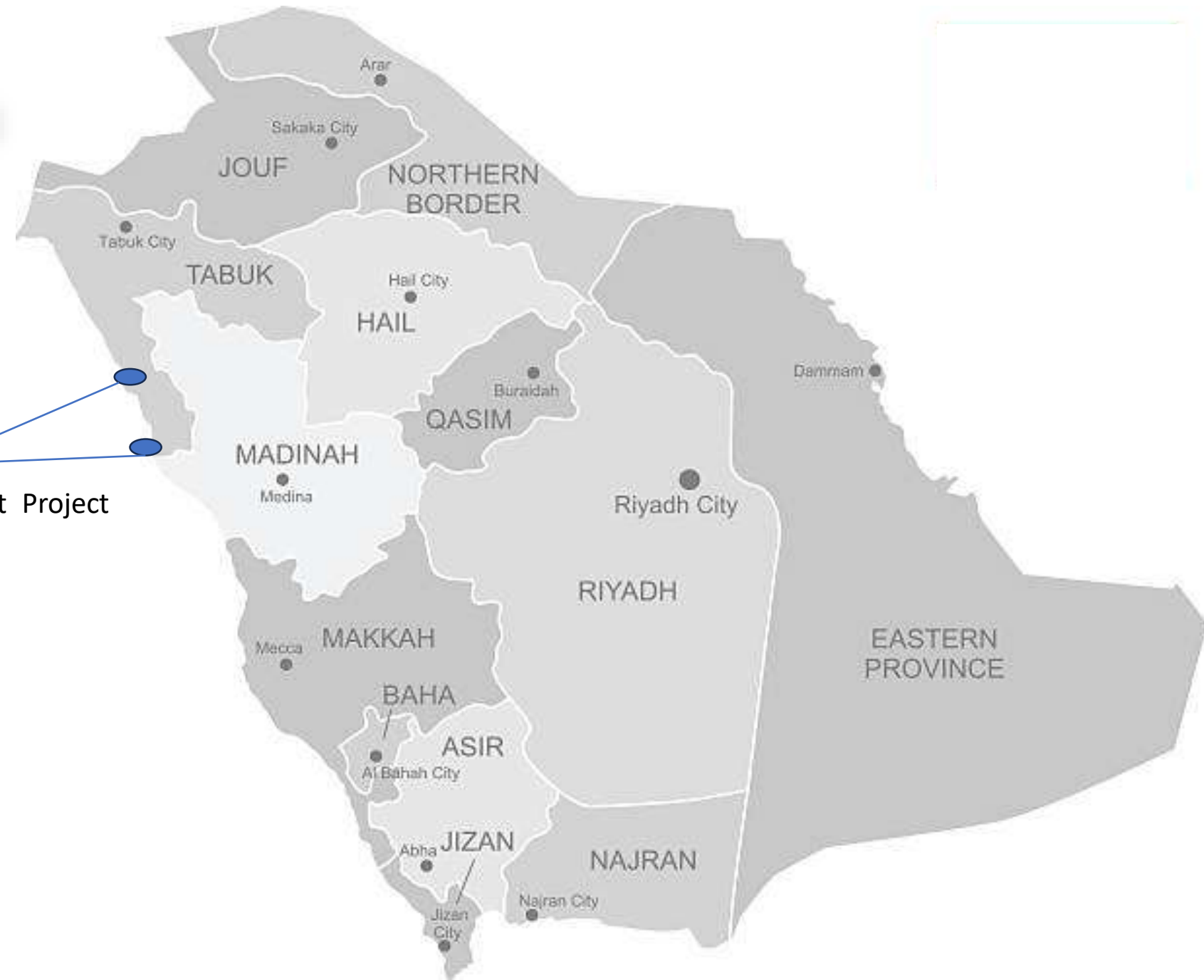
ITCA 

ITALIAN TRADE AGENCY

ICE - Agenzia per la promozione all'estero e  
l'internazionalizzazione delle imprese italiane



AMAAALA



Red Sea Global  
AMAALA  
Luxury Coastal Resort Project

ITA



ITALIAN TRADE AGENCY

ICE - Agenzia per la promozione all'estero e  
l'internazionalizzazione delle imprese italiane



Discover  
AMAALA

Amaala is one of the ultra-luxury tourism projects coming up in Saudi Arabia, as part of its Vision 2030 strategy that seeks to diversify the economy away from the oil dependence of the kingdom.

The project is set in the Prince Mohammad bin Salman Natural Reserve along Saudi Arabia's northwestern coast spanning 4,155 sq. km.

The destination combines a pristine landscape and diverse natural ecosystems, the purity of the Red Sea, and adds to it a unique and intriguing heritage and local culture.

Amaala is being built with an estimated budget of more than \$6bn.

**Amaala will aim to provide  
year-round events  
covering sea and sun to  
sports, arts, and cultural  
experiences encapsulating  
what is being said as the**

**'first global integrated  
family wellness  
destination, set to curate  
transformative personal  
journeys.'**

**The project was initially being planned and developed by the company named Amaala. In October 2022, Amaala was merged with another company, the Red Sea, to form a new company named Red Sea Global to implement the project.**

**First founded in 2018 under the name The Red Sea Development Company (TRSDC), it is a closed joint stock company wholly owned by the Public Investment Fund (PIF).**



**Construction on the project started in 2020 and the entire project will be developed in phases.**



**It comprises three elements: Triple Bay, the Coastal Development and the Island.**



**Each will include several residential, hospitality and retail components.**

As of mid-March 2023, the first phase of the project – The Triple Bay – is under construction with 42 per cent having been completed.

**Mar. 2023**

**end of 2024**

This phase is expected to be completed by the end of 2024. The Triple Bay will encompass eight resorts and over 1,300 hotel keys.



- When all the phases are complete and operational, the Amaala will boast of more than 3,000 hotel rooms across 25 hotels, and approximately 900 luxury residential villas, apartments, and estate homes, alongside high-end retail establishments, fine dining, wellness, and recreational facilities, hosting not more than 500,000 visitors a year.



- **Amaala is being built as an environmentally sustainable project, fully powered by renewable energy sources. The destination will not be connected to the national grid. It is planned to have a zero-carbon footprint with zero waste to landfill once fully operational.**



- **Due to this, one of the most challenging and expensive sub-projects of Amaala is the Utilities Package.**

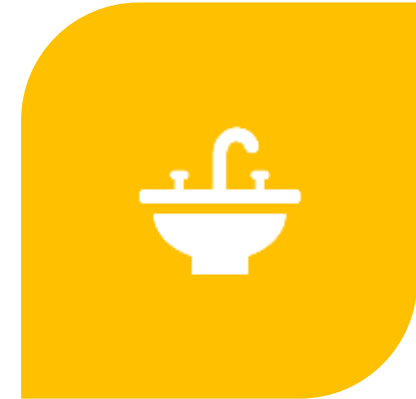
# This package will involve the construction of:



**146MW SOLAR POWER PLANT.**

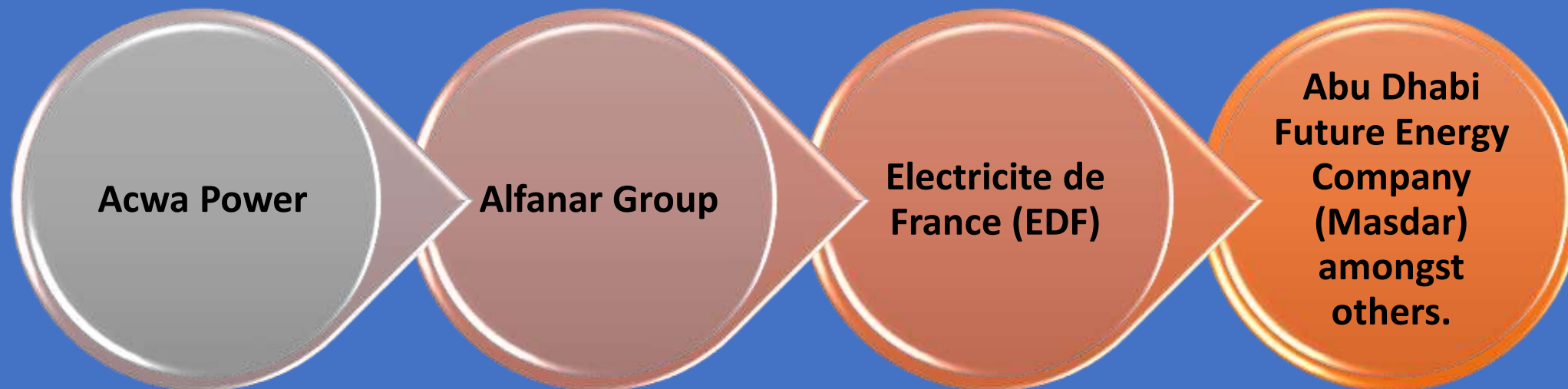


**A SEAWATER REVERSE OSMOSIS (RO) PLANT WITH A PEAK CAPACITY OF 58,000 CUBIC METERS A DAY (CM/D)**

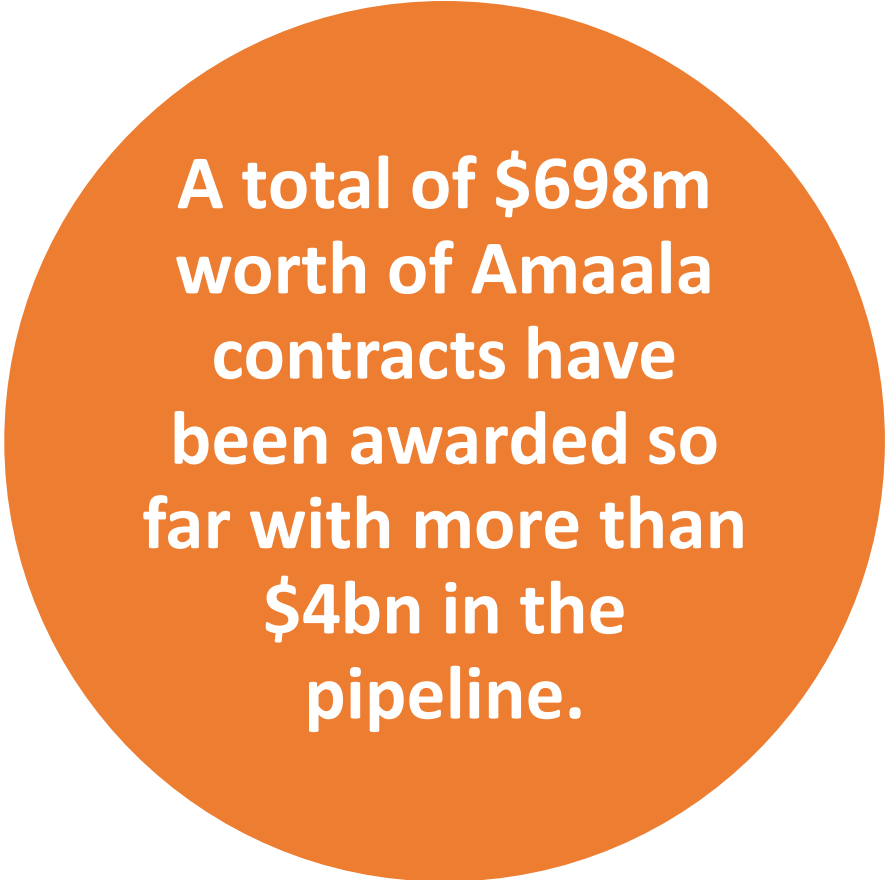


**A SEWAGE TREATMENT PLANT (STP) WITH A CAPACITY OF 7,250CM/D.**

**Bids for this estimated \$1.2bn package have been submitted by:**



**As of mid-March 2023, the bids are under evaluation.**

A large, solid orange circle containing white text.

**A total of \$698m  
worth of Amaala  
contracts have  
been awarded so  
far with more than  
\$4bn in the  
pipeline.**

A large, solid grey circle containing white text. A yellow dashed arc is positioned above the circle, resembling a sun or a decorative element.

**About \$1.8bn  
worth of contracts  
are in the  
advanced stages of  
bidding.**

**US-based HKS and Malaysia-based  
Denniston International Architects &  
Planners are the architects for the project**



**UK-based Foster + Partners and  
Dubai-based U+A Architects have  
been appointed as consultants.**

# ITTA



ITALIAN TRADE AGENCY

ICE - Agenzia per la promozione all'estero e  
l'internazionalizzazione delle imprese italiane



# Amaala

Phase 1 of development is on track for completion in 2024, specifically, 8 resorts and 1,300 hotel keys. Phase 1 is focused on Triple Bay.

**3** The Island – comprises:

- Artists' Village
- Private Estate Villas
- 200 Villas and Condominiums
- 7 Hotels
- 400 Guest Accommodations
- Arabian-inspired Botanical Gardens

Denniston is the master planner.

Amaala.com



**2** Coastal Development – comprises:

- Cultural Village
- World-Class Golf Course
- Golf Villas
- 7 Hotels
- 400 Guest Accommodations
- 200 Villas and Condominiums



**1** Triple Bay – comprises:

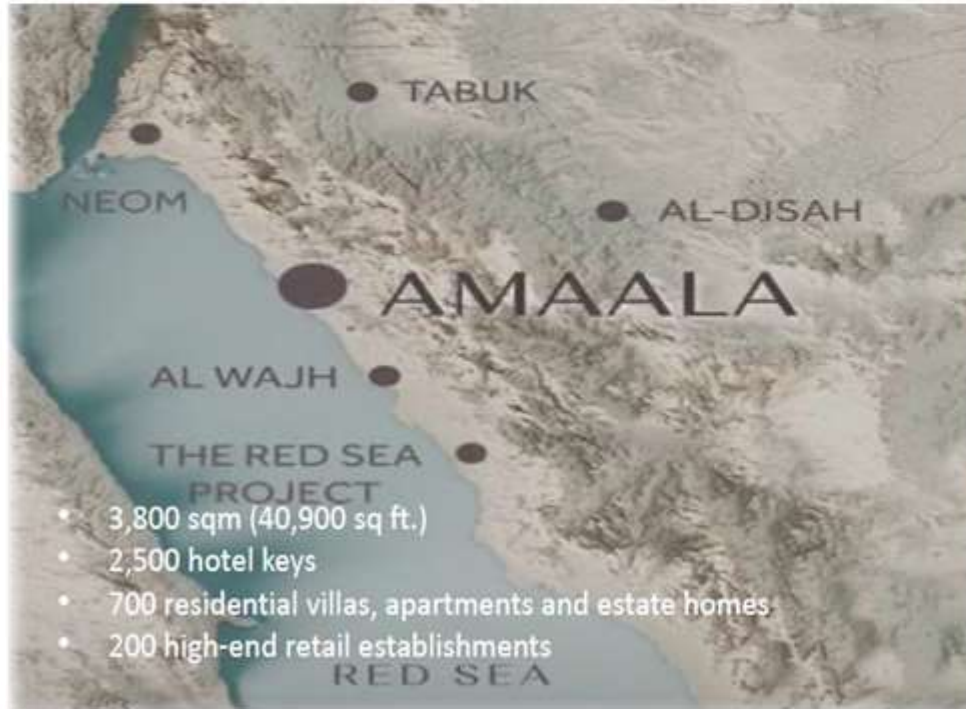
- Wellness Core
- Marine Life Institute (Foster + Partners)
- 16 Hotels
- Rock Hotel
- 1,325 Guest Accommodations
- 135 Villas and Condos





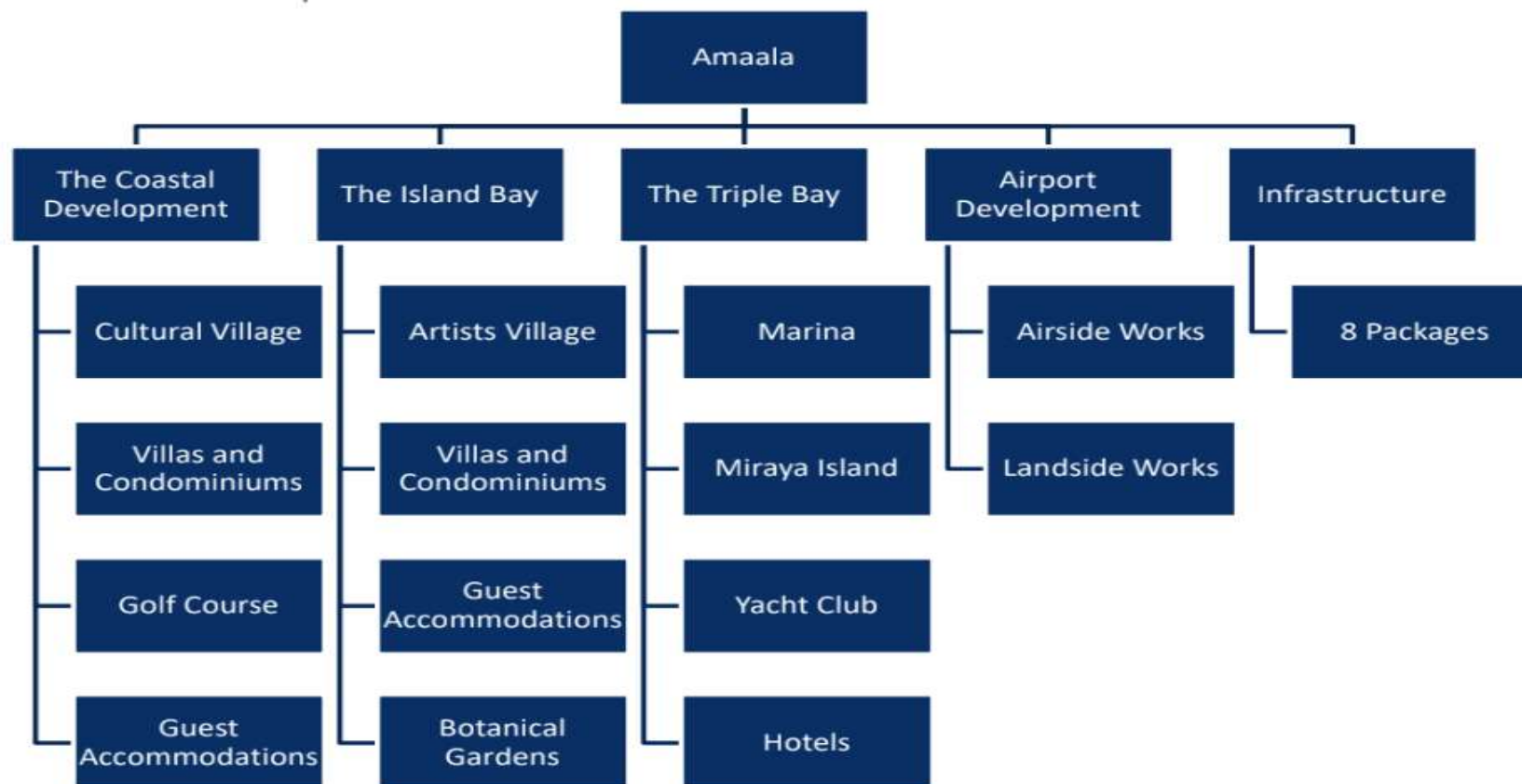
# Amaala

Masterplanned by HKS and Denniston, the project will provide a year-round destination with a unique heritage and landscape, pristine ecosystems and world-class yachting opportunities. With proximity to regional destinations including Marrakech, Petra, Cairo, Beirut, Dubai and Istanbul, Amaala aims to become the heart of a new Middle East riviera.



## Amaala – Package Breakdown

Phase 1 focuses on the development of Triple Bay. As of March 2023, 48 per cent of Triple Bay is completed. Construction on Secondary Infrastructure package is expected to be complete by the end of 2024. Other elements of the giga project will be developed in the second and third phases.



# Amaala

Phase 1 of development is on track for completion in 2024, specifically, 8 resorts and 1,300 hotel keys. Phase 1 is focused on Triple Bay.

## The Island – comprises:

- Artists' Village
- Private Estate Villas
- 200 Villas and Condominiums
- 7 Hotels
- 400 Guest Accommodations
- Arabian-inspired Botanical Gardens

Denniston is the master planner



Amaala.com



2



## Coastal Development – comprises:

- Cultural Village
- World-Class Golf Course
- Golf Villas
- 7 Hotels
- 400 Guest Accommodations
- 200 Villas and Condominiums




1



## Triple Bay – comprises:

- Wellness Core
- Marine Life Institute (Foster + Partners)
- 16 Hotels
- Rock Hotel
- 1,325 Guest Accommodations
- 435 Villas and Condos



- FOR MORE INFORMATION:
  - <https://www.amaala.com/en/home>
  
  - FOR REGISTRATION AS SUPPLIER:
  - <https://www.redseaglobal.com/en/vendor-registration>
- 
- A decorative yellow dashed line consisting of several curved segments, located in the bottom right corner of the slide.



## Vendor Registration Process

As with all the giga projects, suppliers and contractors must register with the client separately on its website. Tenders are not public, and companies will only be able to bid following a direct invitation from Amaala.

