



**Aeroporto  
Internacional de  
Belo Horizonte**  
PRONTO PARA O MUNDO

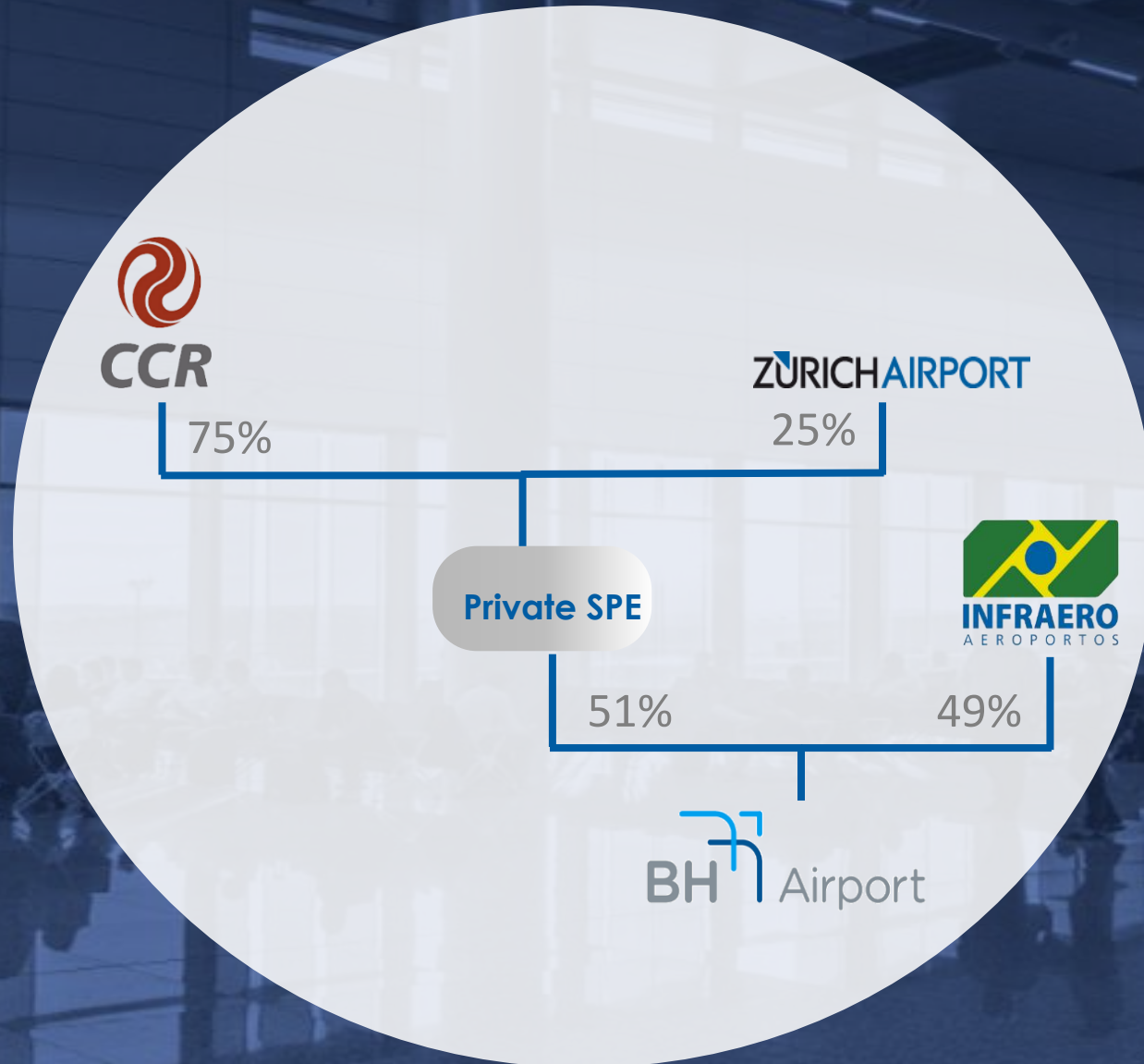


**BELO HORIZONTE INTERNATIONAL AIRPORT**

*Industrial Airport*

# BH AIRPORT

Stock ownership

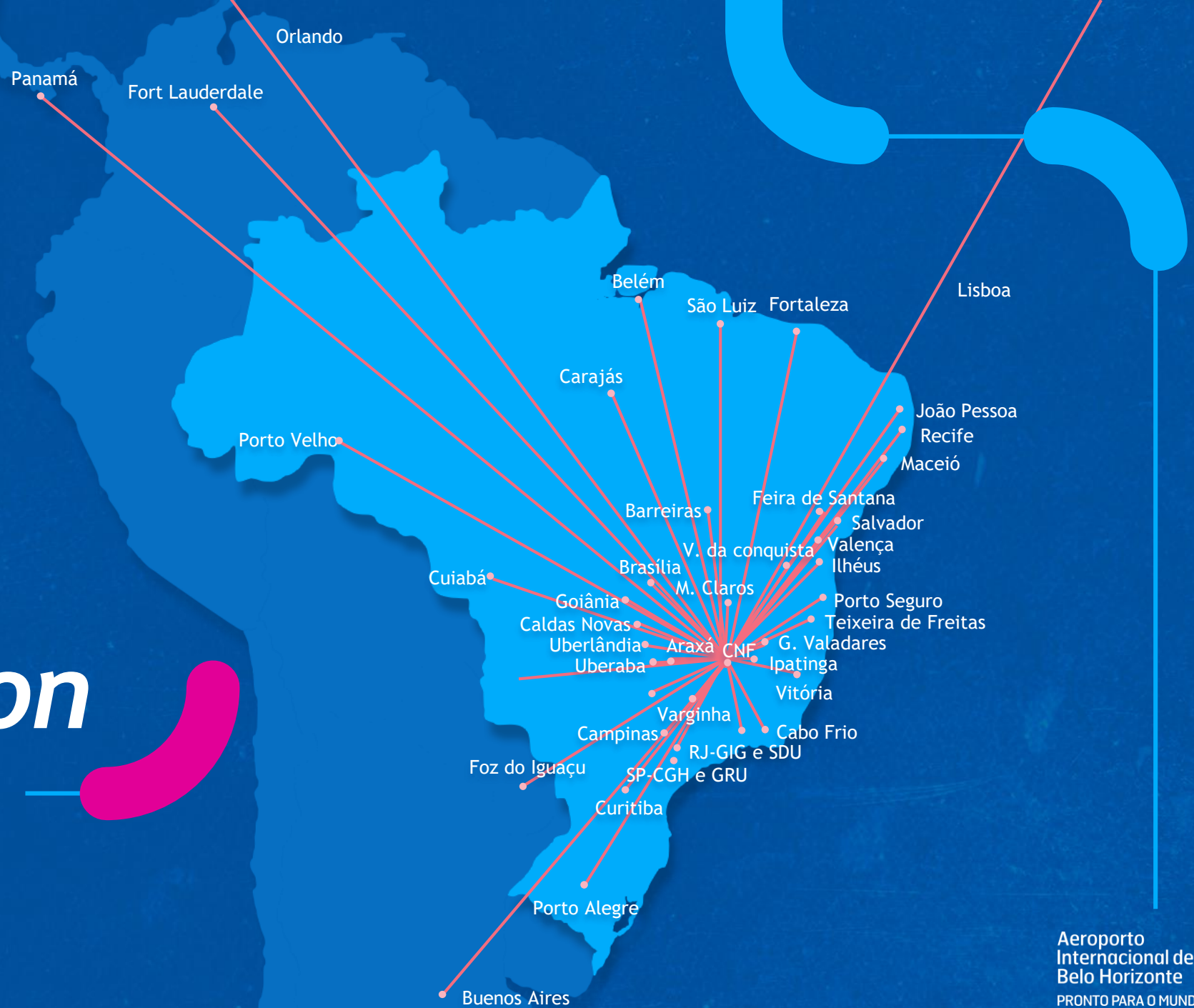




*PRIVILEGED GEOGRAPHIC  
LOCATION AND AIR  
NETWORK*

Aeroporto  
Internacional de  
Belo Horizonte  
PRONTO PARA O MUNDO

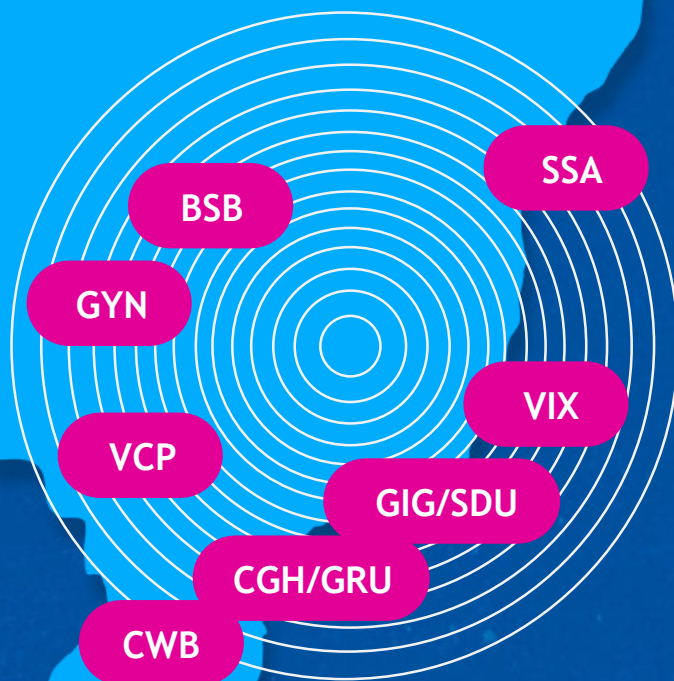
# Route distribution



Aeroporto  
Internacional de  
Belo Horizonte  
PRONTO PARA O MUNDO



## *Privileged geographic location and air network*



Distance from Belo Horizonte International Airport /km

Salvador - 965 km	Vitória - 548 km
Brasília - 713 km	Rio de Janeiro - 484 km
Campinas - 629 km	Curitiba - 1.036 km
São Paulo - 621 km	Goiânia - 871 km

### COVERAGE AREA

Belo Horizonte International Airport is located in the municipality of Confins, in the Metropolitan Region of the capital of the State of Minas Gerais, 38 km from the city center.

With a privileged location in relation to the main consumer centers in the country, we are an hour's flight from cities that represent 86% of the national GDP.

# SPECIALIST IN LOGISTIC SOLUTIONS



First and only airport to operate customs warehouse



First and only one to operate Industrial Airport



Third airport to obtain OEA certification



# INFRASTRUCTURE



**TOTAL AREA: 12 THOUSAND M<sup>2</sup>;**



**DANGEROUS CARGO WAREHOUSE: 300 M<sup>2</sup>;**



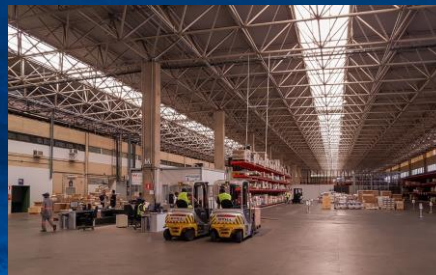
**3.131 M<sup>3</sup> OF COLD CHAMBERS WITH PERSONALIZED SETUP FROM -20°C TO 25°C;**



**11 POSITIONS FOR AIRCRAFT PARKING;**



**INTEGRATION WITH HIGHWAY NETWORK.**



Import warehouse



Access gate with security control



Export warehouse



Exclusive parking



Two new cold chambers



Exclusive building for consenting bodies



# COLD CHAMBERS



## Chamber 04 – Range 2 to 8°

Length: 13.93 m

Width: 4.85 m

Height: 4.40 m

Door Dimensions: 2.15 m (W) X 3.40 m (H)

Shelf positions: 27

Total in m<sup>3</sup>: 297.0

Total in m<sup>2</sup>: 67.6



## Chamber 06 – Range 15 to 25°

Length: 17.25 m

Width: 17.35 m

Height: 6.70 m

Door Dimensions: 21.95 m (W) X 3.35 m (H)

Shelf positions: 223

Total in m<sup>3</sup>: 2,005.0

Total in m<sup>2</sup>: 299.3



## Chamber 05 – Range 2 to 8° or 15 to 25°

Length: 13.90 m

Width: 8.85 m

Height: 4.40 m

Door Dimensions: 3.00 m (W) X 3.40 m (H)

Shelf positions: 75

Total in m<sup>3</sup>: 541.27

Total in m<sup>2</sup>: 123



## Chamber 07 – Sub Zero Range

Length: 14.08 meters

Width: 4.40 meters

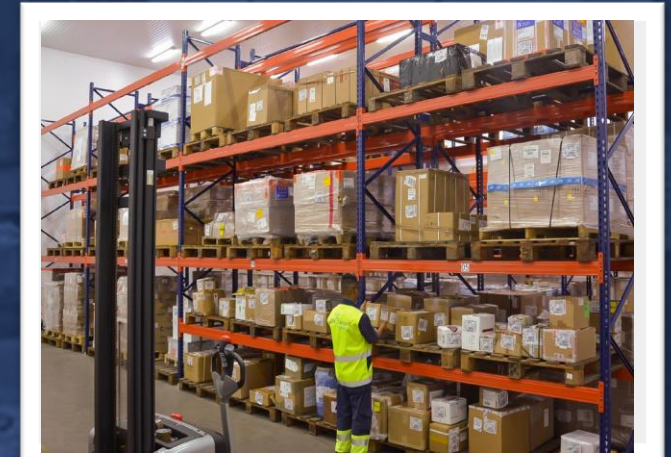
Height: 4.65 meters

Door Dimensions: 21.95 m (W) X 3.35 m (H)

Shelf positions: 26

Total in m<sup>3</sup>: 288

Total in m<sup>2</sup>: 62



# STRATEGY

WITH INTEGRATED LOGISTIC SOLUTIONS, YOUR COMPANY FLIES HIGHER.

The world asks for agility. The world asks for connection. At Belo Horizonte International Airport, customers find multimodal transportation, as well as a team focused on offering **Integrated Logistics Solutions tailored to their needs.**

We work to offer services and products adapted to the demands of our customers, acting as an influential link in the Brazilian industry.

BH Airport Cargo is now Integrated Logistic Solutions

Aeroporto  
Internacional de  
Belo Horizonte  
PRONTO PARA O MUNDO

An aerial photograph of an industrial airport complex, overlaid with a blue tint and geometric lines. The image shows a large industrial facility with multiple buildings, a parking lot, and a complex road network. A prominent blue circle highlights a specific area of the facility. The background shows a landscape with hills and a city in the distance.

*INDUSTRIAL AIRPORT  
FIRST AND ONLY ONE IN  
BRAZIL*

Aeroporto  
Internacional de  
Belo Horizonte  
PRONTO PARA O MUNDO

Looking for a complete



logistics solution

for your production?

A solution that has



A direct connection to the primary import and export zone?

&

**TAX INCENTIVES**  
Differentiated Tax Benefits?

&

End-to-end material storage and control?



We would like to present to you

*Industrial Airport*

Aeroporto Internacional de Belo Horizonte  
PRONTO PARA O MUNDO

# Industrial Airport

End-to-End Control: control of entry and exit of domestic/imported raw materials with Just-in-Time and Kanban

Governance: reconciliation of raw materials and final products with the Federal Revenue Service, reducing tax risks

TECA Handling > Industrial Airport > TECA



Stock Management of Raw materials & Just-in-Time



Safety & Agility: Priority in cargo processing and clearance with minimum displacement between Cargo Terminal and Production Line reducing risks of loss in Handling.

Custom Clearance



Cost Efficiency & Sustainability: Experienced team in the environmental management of production waste and cost reduction with demand scalability

Stock Management of Final Product



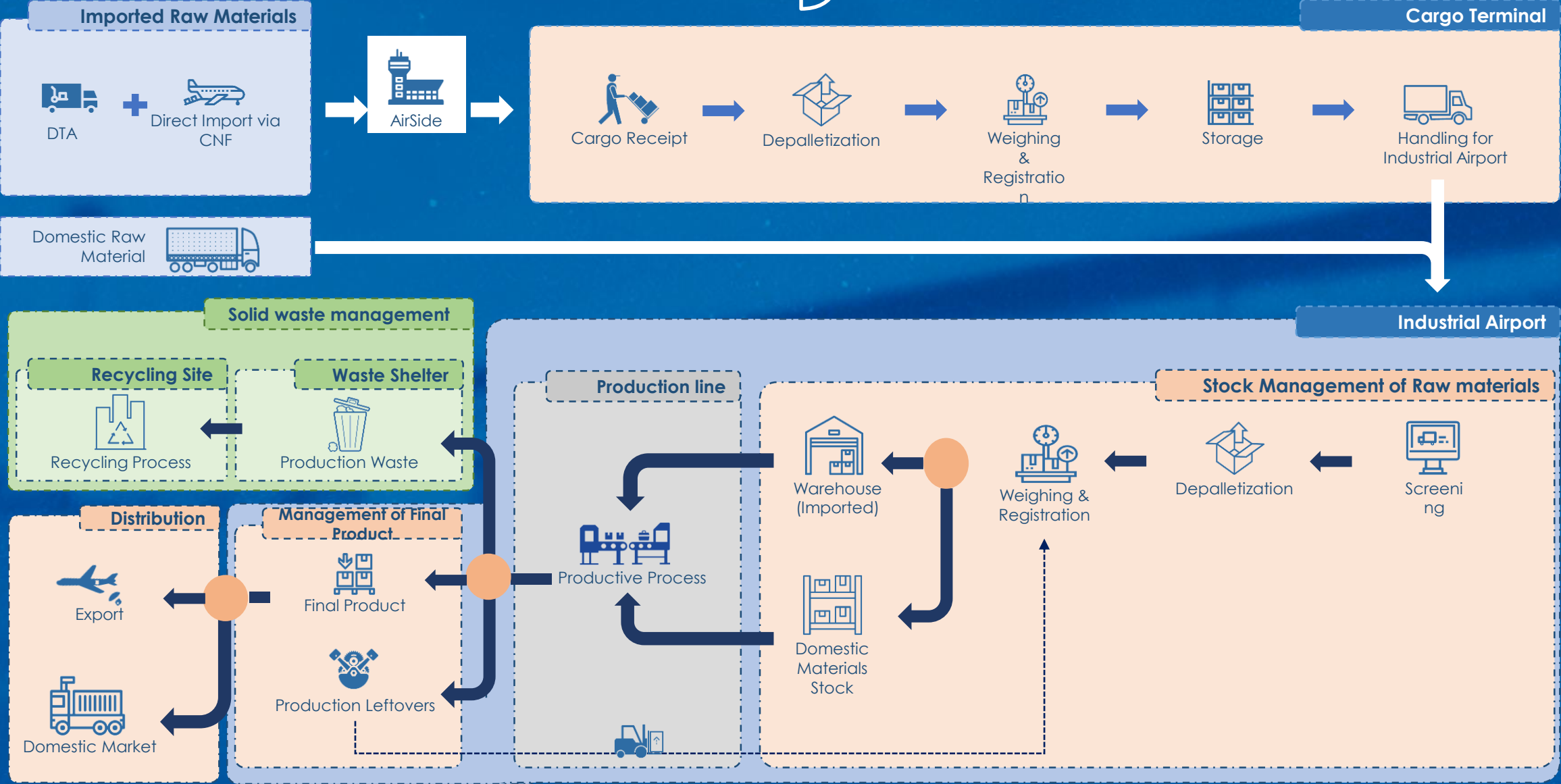
Storage & Foreman at TECA



Solid Waste Management Plan



# Service Journey



An aerial photograph of an airport terminal and surrounding infrastructure, including runways and taxiways. The image is overlaid with a blue tint and several geometric lines: a diagonal line from the top-left, a circle on the left side, and another diagonal line from the top-right. The text 'EXPANSION PROJECTS' is written in a large, white, outlined, sans-serif font across the center-right of the image.

# EXPANSION PROJECTS

Aeroporto  
Internacional de  
Belo Horizonte  
PRONTO PARA O MUNDO

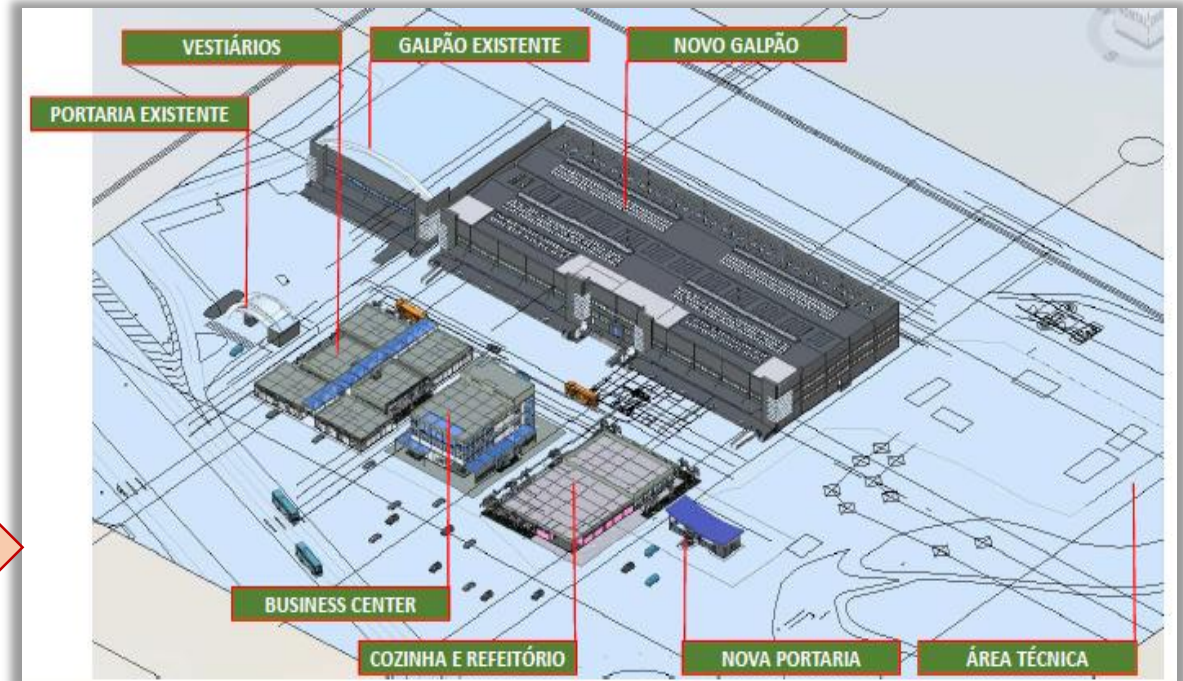
# INDUSTRIAL AIRPORT EXPANSION





# PLANNING 2020 AND LONG TERM

## Corporate Drivers



### Phase 1:

- Area of approximately 55,000m<sup>2</sup>
- New Additional Warehouse.
- New Buildings Technical Area.
- Potentializing of Primary Networks.
- New Support Buildings (cafeterias and changing rooms).

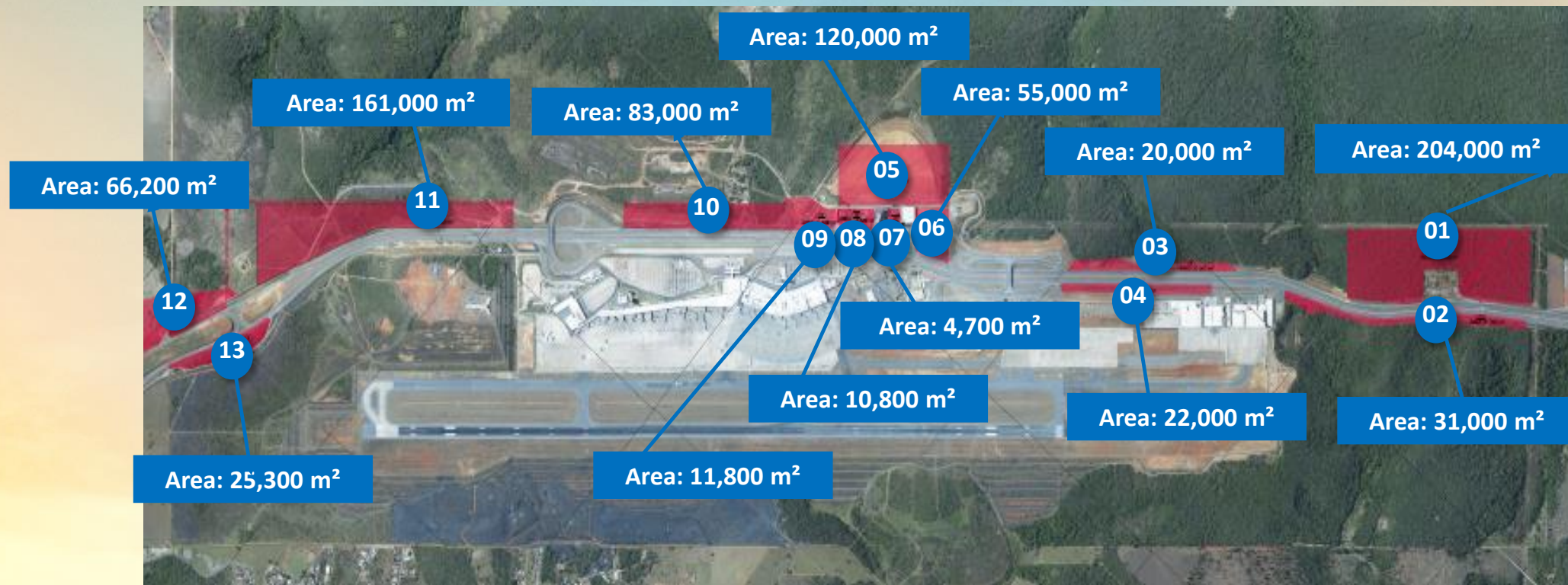
### Phase 2:

- Area of approximately 120,000m<sup>2</sup>
- Complementary Service Routes.
- Potentializing of Installations.
- Allotment and basic infrastructure.
- New warehouses on demand.

GO Live Operation:  
**April 2020**

# IDENTIFIED AND QUALIFIED AREAS

More than **750 thousand m<sup>2</sup>** of available area



Commercial exploration -  
identification and  
qualification of areas

An aerial photograph of an airport terminal and surrounding infrastructure, including runways and taxiways. The image is overlaid with a blue tint and several geometric lines: a diagonal line from the top-left, a circle on the left side, and another diagonal line from the top-right. The text 'DRAWBACK vs INDUSTRIAL AIRPORT' is written in a white, outlined, sans-serif font across the center-right of the image.

# *DRAWBACK vs INDUSTRIAL AIRPORT*

Aeroporto  
Internacional de  
Belo Horizonte  
PRONTO PARA O MUNDO

# DRAWBACK vs INDUSTRIAL AIRPORT

## Solutions & Integrated Logistics

### Diagnostic

Detailed analysis of import and export operations is necessary in order to identify the potential use of the benefits. Example of some necessary analyzes:

- Imported vs exported items.
- Loss and Waste Analysis.
- Export vs Import Forecast
- Estimation of taxes per transaction x potential for exemption.
- Sales predictability.

### Planning

Based on the diagnosis, a planning for the Concession Acts to be claimed is generated. The Concession Act is the request for the benefit based on your activities in recent years and in the import and export forecasts of the coming years. In other words, it is in this act that the company undertakes to import a certain amount of inputs and export a certain amount of finished products. Failure to comply with this commitment, even if partially, generates financial penalties for the company.

D  
R  
A  
W  
B  
A  
C  
K

### Management

Once the concession acts are deferred, the company starts the implementation process, in which it is **necessary to manage the imported x exported items** in order to follow the reality VS what was promised in the Concession act. It should be requested, through Siscomex, to change the expected quantities of goods imported or purchased in the domestic market or of products to be exported when there are changes in the originally planned production process; goods imported or purchased on the domestic market or products to be exported; or the quantities to be exported or imported.

### Risks

In order to obtain the scheme, or to maintain it, it is necessary to comply with several rules (e.g., the existence of a computerized control system, storage in a specific location, etc.). Rules which will be duly supervised, and in case of non-compliance, a fine of R\$ 1,000.00 per day will be applied for non-compliance with a requirement, condition or operational standard.

And in case of non-compliance with the agreed exports, the tax credit granted must be required plus interest on arrears and a fine of 75% or, in the event of an evident intention of fraud, evasion or collusion, 150%.

# DRAWBACK vs INDUSTRIAL AIRPORT

## Solutions & Integrated Logistics

### Diagnostic



### INDUSTRIAL AIRPORT

At the Industrial Airport, all these steps are the responsibility of BH Airport

Diagnostic

Planning

Management

Risks

### Management

#### Cost Reduction

- It is not necessary to hire dispatchers for the administration, who charge a fee of 5% to 10% under unpaid taxes
- It is not necessary to hire qualified labor
- There is no need to worry about possible operational adjustments

#### Risk Reduction

- All steps of planning and management are carried out by the airport industry which is fully responsible for the process

#### Less Bureaucracy

- Concessionary acts are not required at Industrial Airport, benefits are automatically granted

#### Best use of the Benefit.

- Many companies fail to request drawback for some products due to the unpredictability of exports or the complexity of the production chain. With AI all opportunities will be mapped in more precise ways as they happen within the AI's responsibility area



**Aeroporto  
Internacional de  
Belo Horizonte**  
PRONTO PARA O MUNDO