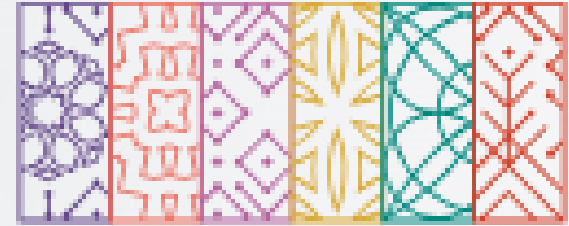
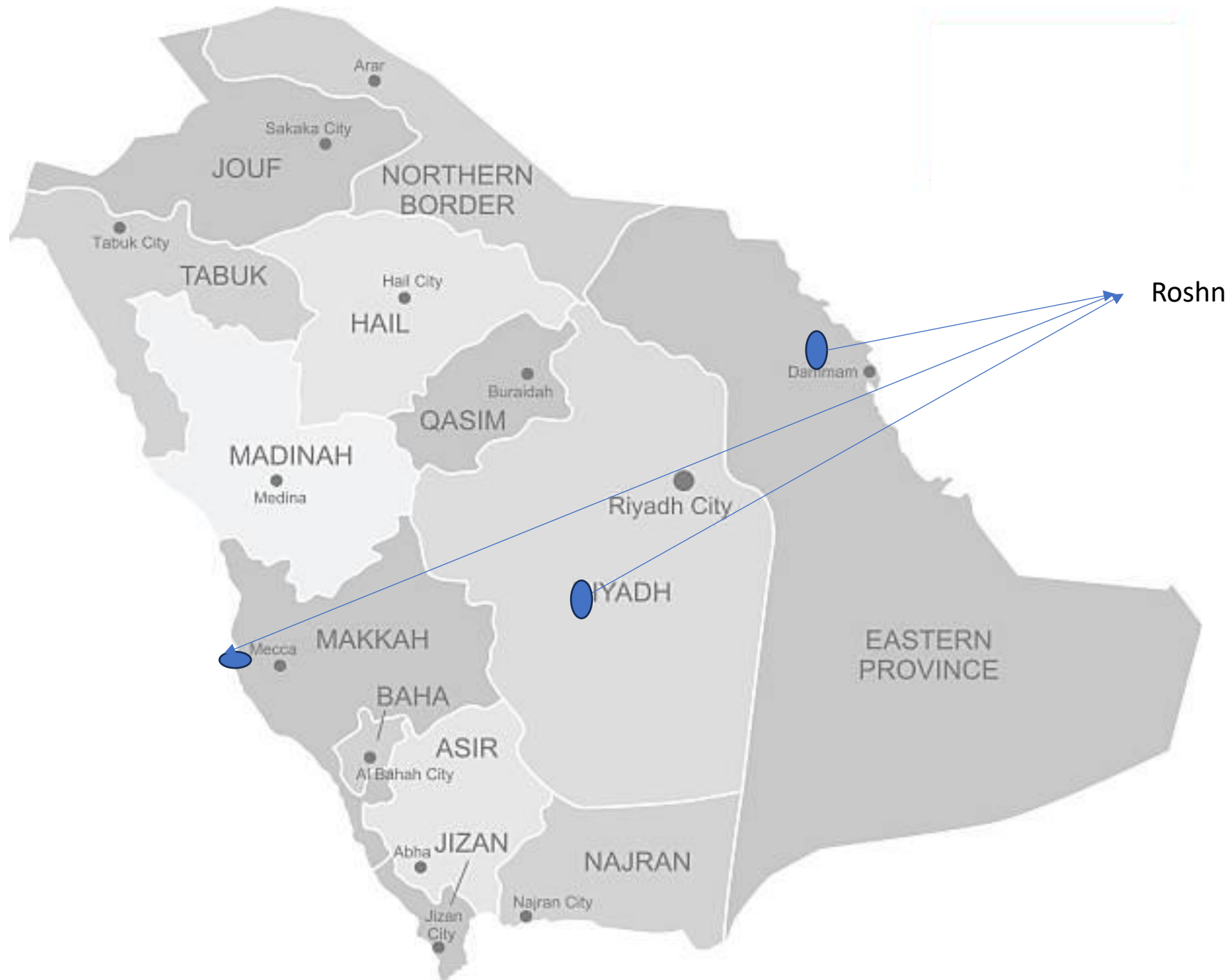



ROSHN



روشن
— RO SHN —





- 
- **communities are wholly inclusive and aim to deliver a broad range of homes to accommodate all preferences from studio apartments to premium villas.**



SEDRA

Riyadh

- 
- An aerial photograph of a city skyline, likely Riyadh, featuring several prominent skyscrapers. The image has a warm, sepia-toned filter. A white horizontal line is positioned across the middle of the image, separating the skyline from a list of bullet points. In the top left corner, there is a small orange rectangular graphic element.
- **Riyadh SEDRA**
 - **A New Way of Living**
 - **Introducing the third phase of SEDRA, in Riyadh's most sought-after development and ROSHN's first project in the Kingdom.**



Located in the heart of Riyadh, SEDRA comprises beautifully designed homes complemented by mosques, local shops, cafes and restaurants, parks, schools, fitness and sports facilities, and neighborhood entertainment spaces - a living community.



8 phases

Each an integrated, pedestrian-friendly community



20m sqm

Meticulously maintained and managed



30k+ homes

With property types and sizes to suit everyone



400+ amenities

With those needed day-to-day just a five minute walk away

- **SEDRA has everything you and your family need to enjoy a healthy and happy lifestyle, supported by market-leading community services.**





ALAROUS

JEDDAH

JEDDAH ALAROUS

- An integrated community inspired by the designs of classic Jeddah architecture, encouraging residents to connect and enjoy nature as part of their daily life.





- ALAROUS is located north of Jeddah, south of King Abdullah Sports City and north of King Abdulaziz International Airport. It's close to the city's most prominent destinations, providing greater accessibility to main roads.



3 phases

of delivery for this integrated lifestyle
community



4M+ sqm

community land area



18K+ homes

a variety of options to suit various
families



300+ amenities

across retail, mosques, schools and
healthcare



WAREFA BY ROSHN

Eastern Riyadh

Welcoming You Home
to a Beautiful New Community
Building on the huge success of
SEDRA, we are delighted to
introduce WAREFA,
the extraordinary new
development for eastern
Riyadh by ROSHN





Like every ROSHN community, WAREFA's homes open onto pedestrian-friendly tree-lined streets where neighbors come together, and amenities to enhance the quality of life of our residents are only minutes away.



The careful design of the individual neighborhoods create small clusters of homes, allowing residents to become friends, and families to connect.



1.4k sqm

Total area, creating an integrated community



20+ Amenities

Different amenities, including mosques, schools, shops, cafes and healthcare facilities



2,300+ homes

With property types and sizes to suit everyone




150k+ sqm

Of green, open space



ALFULWA

- 
- ROSHN's first integrated community in the Eastern province



Fully integrated community

10.8M+

Square metres
land size

18K+

Residential units

South of Hofuf

Location

Duplexes

Type of units







ALDANAH

Dhahran

An Integrated Community in the Heart of Greater Dammam

ALDANAHA brings more than 2,500 homes to the market in multiple phases, within a 1.7M sqm development. Ideally located in Dhahran city, your new home has easy access to Dammam city center and is just 20 minutes from King Fahd International Airport and 15 minutes from the Khobar Corniche.







ALDANAHA has a beautiful central spine of trees and public open spaces, enabling an outdoor lifestyle and creating tranquil areas in which to unwind. And with stunning homes set along peaceful streets with many amenities close by, this vibrant community makes possible a life that is both fulfilling and healthy.

Life Shines Within

Emerging from the pearl
shores of the Eastern

Province, ALDANAH

provides lush greenery,
shaded walkable streets,
and abundant amenities for
an unmatched lifestyle.



Fully Integrated Community

1.7M sqm

Land Size

2.500+

Homes

Dhahran

Location

Everything Within Walking Distance



Mosques



Healthcare Centres



Schools



Parks & Open Spaces



Retail Centres & Services



مرافى

MARAFY

— BY ROSHN —




An aerial night-time photograph of a city, likely Dubai, featuring a prominent river or canal system. The city is illuminated with warm lights, and a large, circular, brightly lit structure is visible in the upper right. The word "MARAFY" is overlaid in the center in a white, italicized, sans-serif font.

MARAFY

Community will boast a
manmade canal at its center, a
first of its kind in Saudi Arabia
PIF-owned ROSHN aligns with
Saudi Vision 2030's
sustainability targets
The Fund's giga-projects
contribute to creating new
ecosystems and launching
sectors





Real estate developer and PIF giga-project ROSHN has announced MARAFY, a mixed-use development located in the north of Jeddah that will accommodate more than 130,000 residents with a manmade canal at its heart – the first of its kind in Saudi Arabia.



MARAFY's canal, 11 kilometers in length and 100 meters wide, will connect and extend the Obhur Creek. This navigable canal is the first to be built in Saudi Arabia, and will be flanked by multiple districts, including ROSHN's existing integrated residential development, ALAROUS.

The waterfront community is set to be ROSHN's first fully mixed-use development. Its districts will be connected to each other and the rest of Jeddah by an intermodal transport system, including water taxis, bus lines, a dedicated Metro Red Line station, and a direct canal link to the King Abdulaziz International Airport.



The canal of MARAFY, comparable in size to waterfronts in global metropolises such as Chicago, Stockholm, Hamburg, and central London, will create an iconic landmark in historic Jeddah.





ROSHN MARAFY PROJECT

The canal of MARAFY, comparable in size to waterfronts in global metropolises such as Chicago, Stockholm, Hamburg, and central London, will create an iconic landmark in historic Jeddah.



ROSHN MARAFY PROJECT

In line with Saudi Vision 2030's sustainability targets, [ROSHN](#)'s pedestrian-friendly and energy-efficient communities are being developed to encourage a better quality of life. The neighborhoods also align with the national aim for 70% of Saudis to own their homes by the end of the decade.



Osamah 333





ALMANAR

Makkah Al-Mukarramah



ALMANAR

- ALMANAR, a residential community that transforms the quality of life available within the holiest of sites, Makkah Al-Mukarramah. ALMANAR gives you and your family the unique opportunity to live within sight of Makkah Gate and within a short drive to Al-Masjid Al-Haram, the most precious place in the Islamic World. With its perfect blend of comfort, safety, and sustainability, ALMANAR offers you and your family not just a home but a thriving community where serenity and family are paramount.

ALMANAR First Phase



ALMANAR First Phase



- Be one of the first to buy in this stunning community in Makkah, benefiting from the new standards being set for residential development in the Kingdom by ROSHN Group, delivering homes and communities that raise the quality of life for our residents.

An Extraordinary Location

- Makkah Al-Mukarramah is an extraordinary location. Not only is it the site of Al-Masjid Al-Haram, making it one of the most-visited cities in the world, but it is the third largest city in Saudi Arabia, and home to over two million people. With the continued urban growth of the central Haram region, the area in which ALMANAR is located benefits both from inward investment and the diverse and cosmopolitan culture shaped by the influx and visits of Muslim pilgrims of all nationalities.

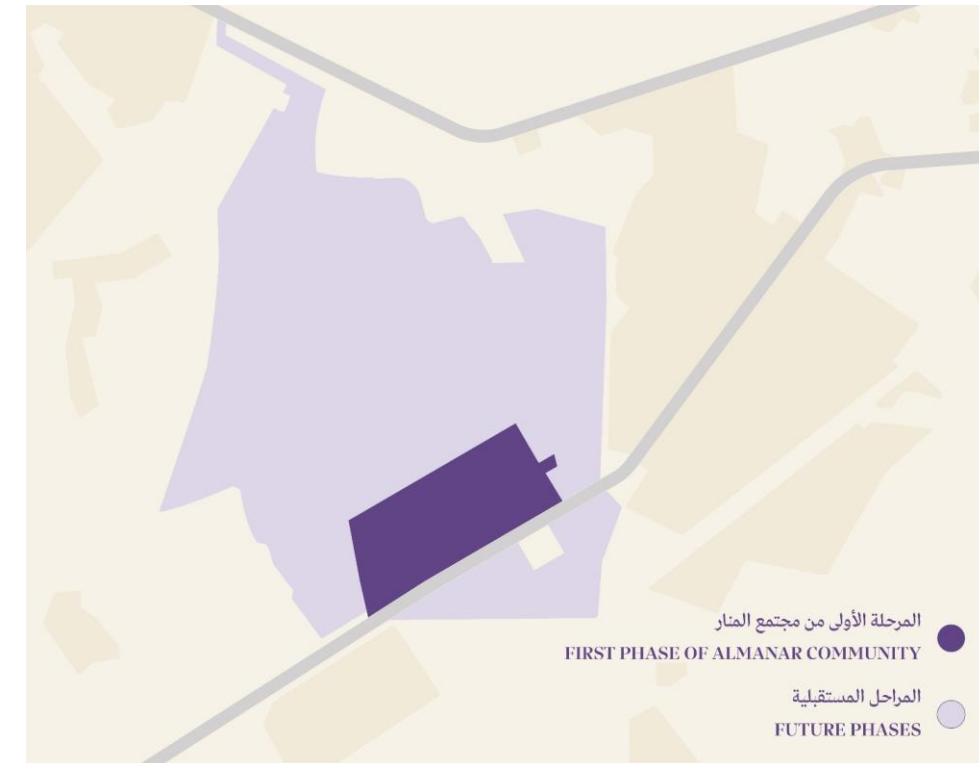
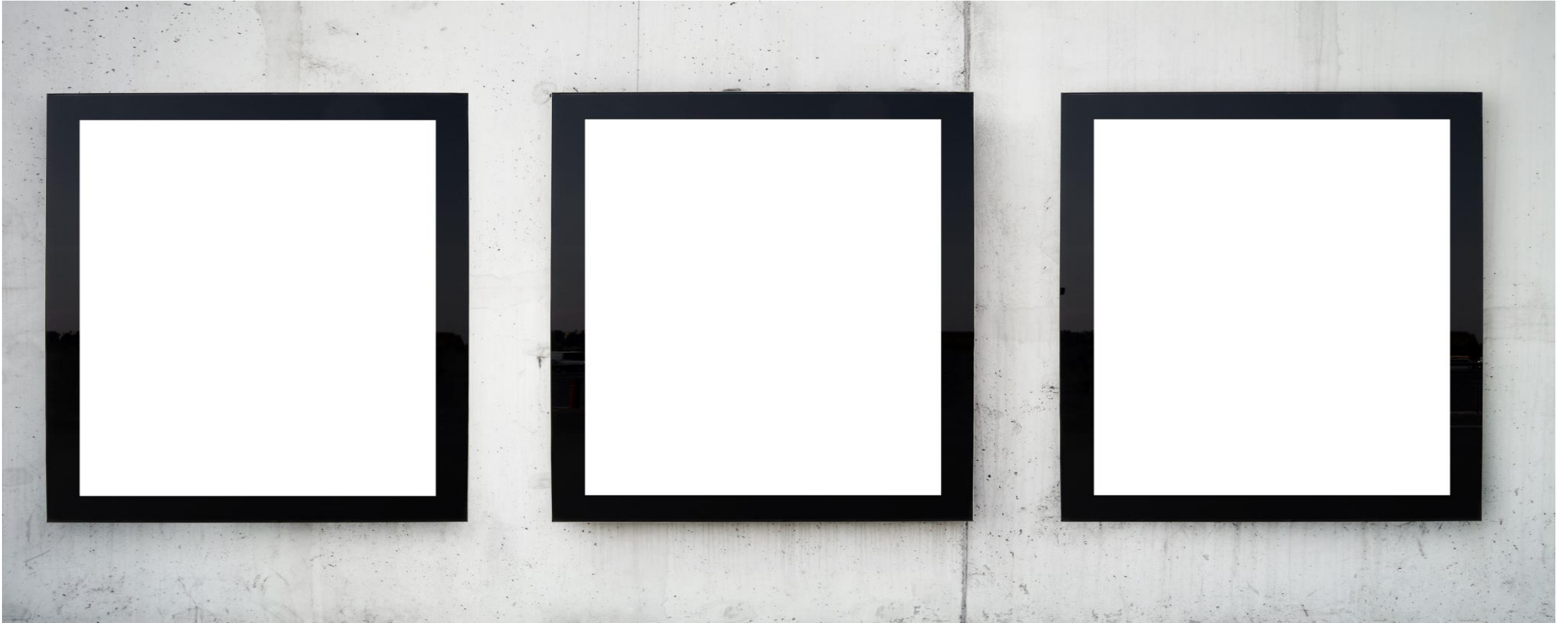


Photo Gallery





ROSHN STADIUMS

RIYADH STADIUM



ARAMCO STADIUM IN KHOBAR





RIYADH STADIUM

Roshn has announced the development of an iconic 45,000-seat stadium spanning over 450,000 square meters in Southwest Riyadh.

The landmark mixed-use project will encompass a wide range of shops, restaurants, and hospitality venues, and at its heart lies the main sports and event floor, seamlessly connecting the various facilities with an open and cohesive design





ROSHN Stadium will become an icon in Southwest Riyadh, characterized by its modern crystalline design emerging into the sky from the surrounding district inspired by the urban fabric and architectural features of Saudi Arabia's central region. The stadium represents a pivotal step in ROSHN's expansion into mixed-use development across a variety of sectors, including sports facilities.

This underscores ROSHN Group's commitment to enhancing quality of life through sustainable real estate development in line with Saudi Vision 2030. Visitors to the stadium will enjoy access to sports facilities such as walkways and public green spaces, making it a vibrant destination. Designed to meet the requirements for hosting the most prominent international sporting events



the stadium will also host other entertainment, cultural, and social events. Its sustainable design also incorporates the latest technologies for water and energy management, including solar panels integrated into the stadium's infrastructure.





The roof design enhances air movement, ensuring adequate ventilation and controlled access to sunlight inside the stadium during daylight hours

This will contribute to improving the quality of life and supporting economic growth in line with Saudi Vision 2030 while providing a unique gathering place in Riyadh and enhancing the Kingdom's attractiveness to host international events and sporting competitions.



ARAMCO STADIUM IN KHOBAR

ROSHN, Saudi Arabia's leading national real estate developer and a PIF company, announced a collaboration with Aramco to build Aramco Stadium in Khobar, Eastern Region. This 47,000-seat stadium, inspired by the Arabian Gulf and the shape of coastal whirlpools, is scheduled for completion by 2026 and will host national and international events, including the 2027 AFC Asian Cup.



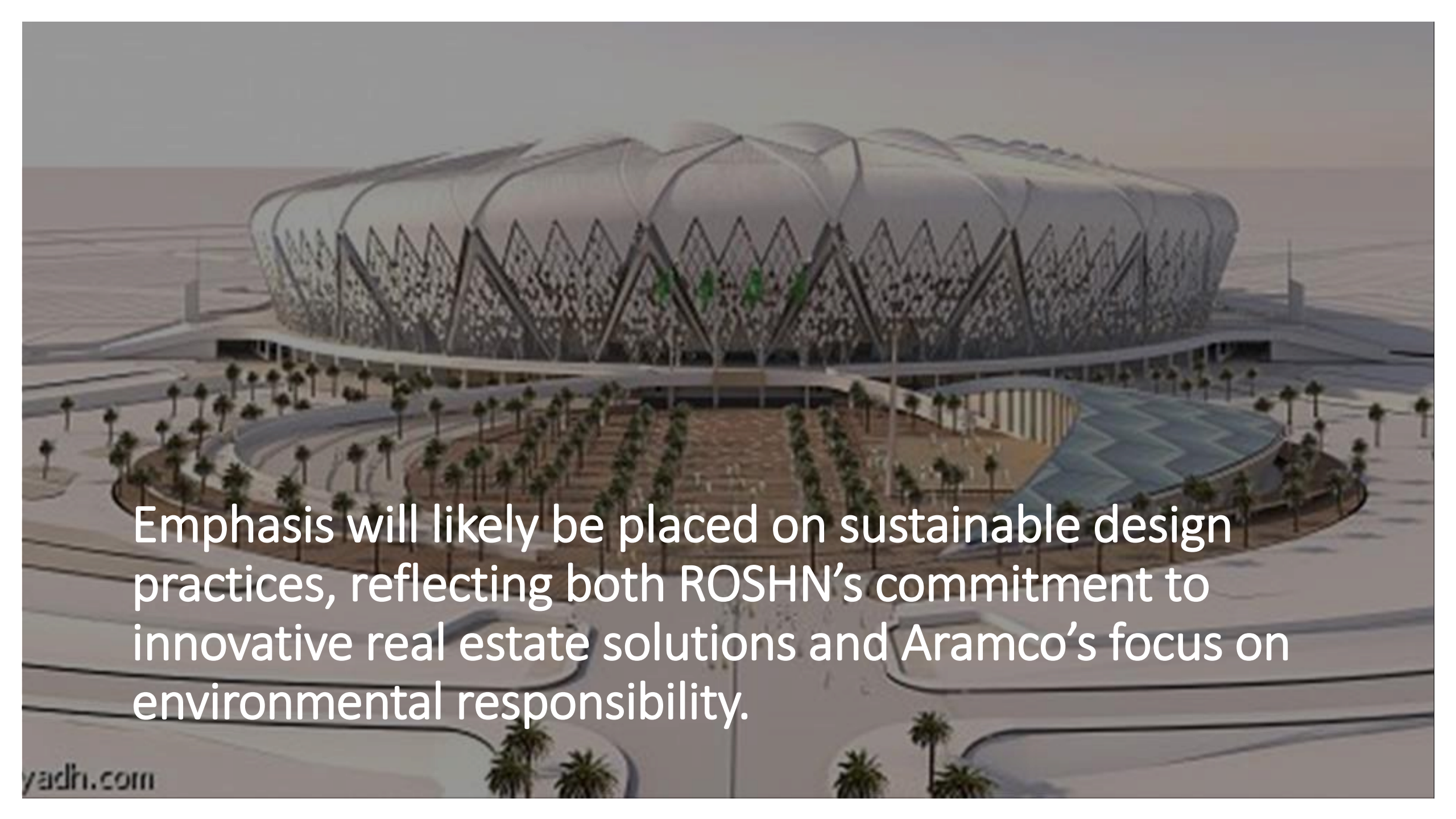
The multifunctional venue will cater to entertainment and sports activities, featuring state-of-the-art amenities that ensure inclusiveness, safety, and sustainability. It aims to become a leading national sports and entertainment destination.



The stadium will include

modern amenities such as advanced seating arrangements, high-definition video displays, and sophisticated lighting and sound systems.





Emphasis will likely be placed on sustainable design practices, reflecting both ROSHN's commitment to innovative real estate solutions and Aramco's focus on environmental responsibility.

The venue is expected to host various events, including sports matches, concerts, and cultural events, enhancing the city's appeal as a key destination for international events.



This project is expected to boost the local economy by creating jobs, attracting tourism, and increasing the city's profile on the global stage. The stadium will provide a world-class venue for local communities, fostering sports and entertainment culture in Khobar.





- For More Information:
 - <https://www.roshn.sa/en/about-us>
-
- FOR REGISTRATION AS SUPPLIER:
 - <https://www.roshn.sa/partnerships>