

timber malaysia

Published by Malaysian Timber Council



Issue: Quarter 2

2020

ISSN 1394-6196



Inside

- ♦ THANK YOU, says timber industry to MPIC
- ♦ Restructuring MTC to better serve the industry
- ♦ Timber industry in business during pandemic



Special Feature

**A conversation with industry captain,
Mr. Goh Chee Yew**

Editorial

Dear Readers,

Thanks to the swift responses and action by the government, the timber industry was given special approval to continue its operations during the recent Movement Control Order period enforced to control the spread of Covid-19. MTC wishes to express its gratitude to the many public and private sector organisations which have made this possible. **Appreciation of the Ministry of Plantation Industries and Commodities' efforts in this regard are expressed in articles on pages 4, 6 and 10.**

MTC has streamlined its operations for better focus in its support and industry services functions. Among the changes implemented through a restructuring exercise is the setting up of a new division to oversee the activities carried out by the various regional offices as well as the repositioning of its personnel for strategic purposes. **More details on MTC's new organisational structure are available on page 5.**

Despite the challenges posed by the Covid-19 pandemic, MTC has continued to engage with its stakeholders at home and abroad, albeit conforming to relevant SOPs imposed to contain the spread of the Covid-19 virus. Besides having Skype meetings with the Malaysian timber associations, MTC also organised timber dialogues through the Zoom e-platform with members of the timber trade in the Netherlands and Poland. MTC also participated in a virtual expo via an e-booth. **Please see pages 7 and 9 for our reports on these activities.**

In a conversation with an industry captain, Mr. Goh Chee Yew, *TIMBER MALAYSIA* tapped into his deep knowledge and views of the timber sector as well as his aspirations for the industry post-Covid-19. **Mr. Goh's insightful thoughts on the timber industry are reflected in our SPECIAL FEATURE on pages 10-11.**

In our INDUSTRY FOCUS section, we showcase four Malaysian timber product manufacturers, namely, Seng Peng Sawmills Sdn Bhd, Dynamic Furniture Industries (M) Sdn Bhd, Impressive Transforms Sdn Bhd and LKM Plywood & Timber Sdn Bhd. **To find out the range of quality timber products these companies have to offer, please turn to pages 12-19.**

Happy reading!

The Editor.



MALAYSIAN TIMBER COUNCIL

MTC HEADQUARTERS

T +60 3 9281 1999
F +60 3 9282 8999
E council@mtc.com.my

MTC AMERICAS

T +1 832 871 5130
F +1 832 871 5001
E americas@mtc.com.my

MTC EUROPE

T +31 (0)10 282 1260
E europe@mtc.com.my

MTC MIDDLE EAST & AFRICA

E mideast@mtc.com.my

MTC EAST ASIA

T +86 20 3877 3019
F +86 20 3877 3091
E eastasia@mtc.com.my

MTC SOUTH ASIA

T +91 80 4853 8888
F +91 80 4853 8888
E southasia@mtc.com.my



www.mtc.com.my



MTC_twt



mtc_my



malaysiantimbercouncil



malaysiantimber



malaysian timber council



malaysian timber council

IMPORTANT NOTICE

For the year 2020, MTC has identified more than 20 international fairs for marketplace promotion as well as setting up of MTC Pavilions.

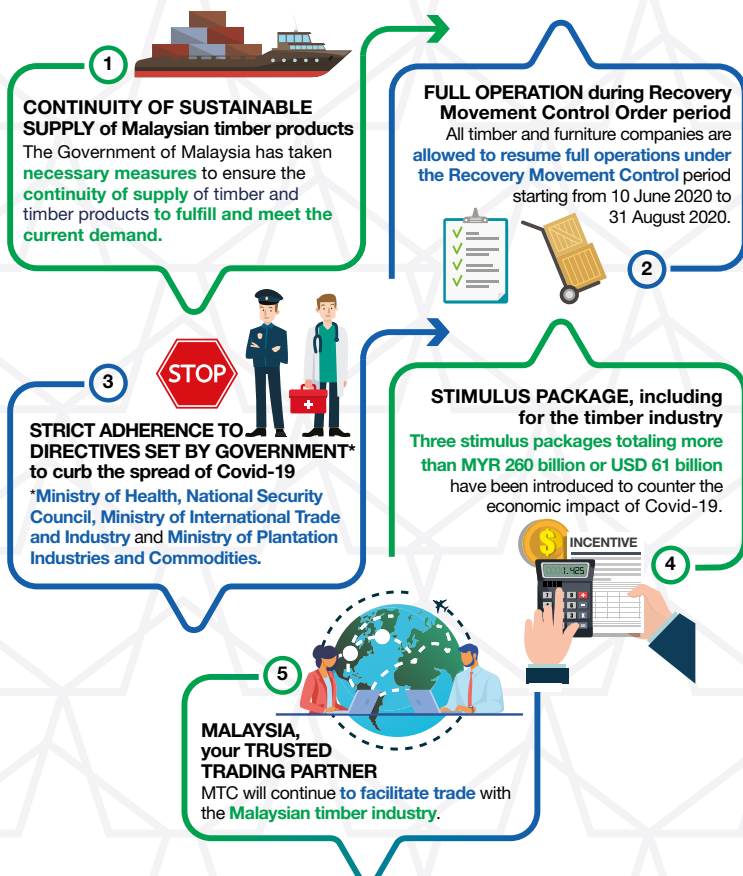
In view of the Covid-19 pandemic, which has resulted in many cancellations and postponements of trade exhibitions and related business events in various markets across the globe, MTC's participation in many fairs has been reduced, cancelled, postponed or turned into virtual exhibitions.

MTC has and will continue to review and re-strategise its programmes and activities as and when necessary for the best interest of its industry members and buyers of Malaysian timber-based products.

Updates on MTC and its programmes and services will be made available from time to time on our website (www.mtc.com.my). For enquiries, kindly contact MTC.

MALAYSIAN TIMBER INDUSTRY

Meeting buyers' needs whilst coping to contain Covid-19



CONTENTS

NEWS



- 4 THANK YOU, says timber industry to MPIC
- 5 Restructuring MTC to better serve the industry
- 6 Timber industry in business during pandemic
- 7 MTC's Skype meetings help resolve stakeholders' woes
- 8 MTC's sourcing programme sought-after
- 9 MTC Zooms in on virtual trade dialogues with European counterparts
- 9 MTC's first e-booth

INDUSTRY FOCUS



- 12 Seng Peng Sawmills
- 14 Dynamic Furniture Industries
- 16 Impressive Transforms
- 18 LKM Plywood & Timber

SPECIAL FEATURE



- 10 A conversation with industry captain, Mr. Goh Chee Yew

GLOBAL COMMUNITY



- 20 June Momentum for Climate Change
- 21 Petersberg Climate Dialogue XI

GREEN GROWTH

- 22 SFM among Sarawak's post-Covid focus
- 22 Thumbs-up for Sabah's commitment to state forest



Dato' Low (second from left) presenting an MTC souvenir to Dato' Dr. Mohd. Khairuddin as Dato' Ahmad Nadzaruddin (right) and Mr. Wong look on.

THANK YOU, says timber industry to MPIC

MTC Chairman Dato' Low Kian Chuan expressed the timber industry's appreciation to the Ministry of Plantation Industries and Commodities (MPIC) for its crucial role in obtaining special approval from the Ministry of Health, which enabled the industry to operate during the recent Movement Control Order (MCO) period.

He said the special approval and MPIC's assistance and support rendered ensured the continuity of the timber industry's operations during the MCO period even though it was not part of the essential services sector.

Dato' Low said this during a courtesy visit on the Minister of Plantation Industries and Commodities YB Dato' Dr. Mohd. Khairuddin Aman Razali at MPIC in Putrajaya on 25 June 2020. MTC Acting CEO Mr. Wong Kah Cane, accompanied Dato' Low on the visit.

The Minister was briefed on MTC's performance, challenges faced by the timber industry as well as its development and MTC's strategic plans for the continued growth of the Malaysian timber industry.

Dato' Low said that as an organisation MTC wears many hats. He highlighted the Council's role which centres on four key

thrusts – market intelligence, market development, stakeholder engagement as well as industry development and empowerment.

He also added that MTC was quick to put in place transformation plans during the MCO period which were digital-centric with its staff working remotely to help industry partners and stakeholders.

A similar briefing was also conducted for MPIC Deputy Ministers YB Dato' Sri Dr. Wee Jeck Seng and YB Tuan Willie Anak Mongin who visited the MTC headquarters in Kuala Lumpur on 17 June 2020.

On hand to welcome the Deputy Ministers were Dato' Low, Mr. Wong and MTC COO Mr. Roger Chin who all accompanied the Deputy Ministers on a guided tour of MTC's gallery displaying products made of Malaysian timbers that are sought-after overseas.

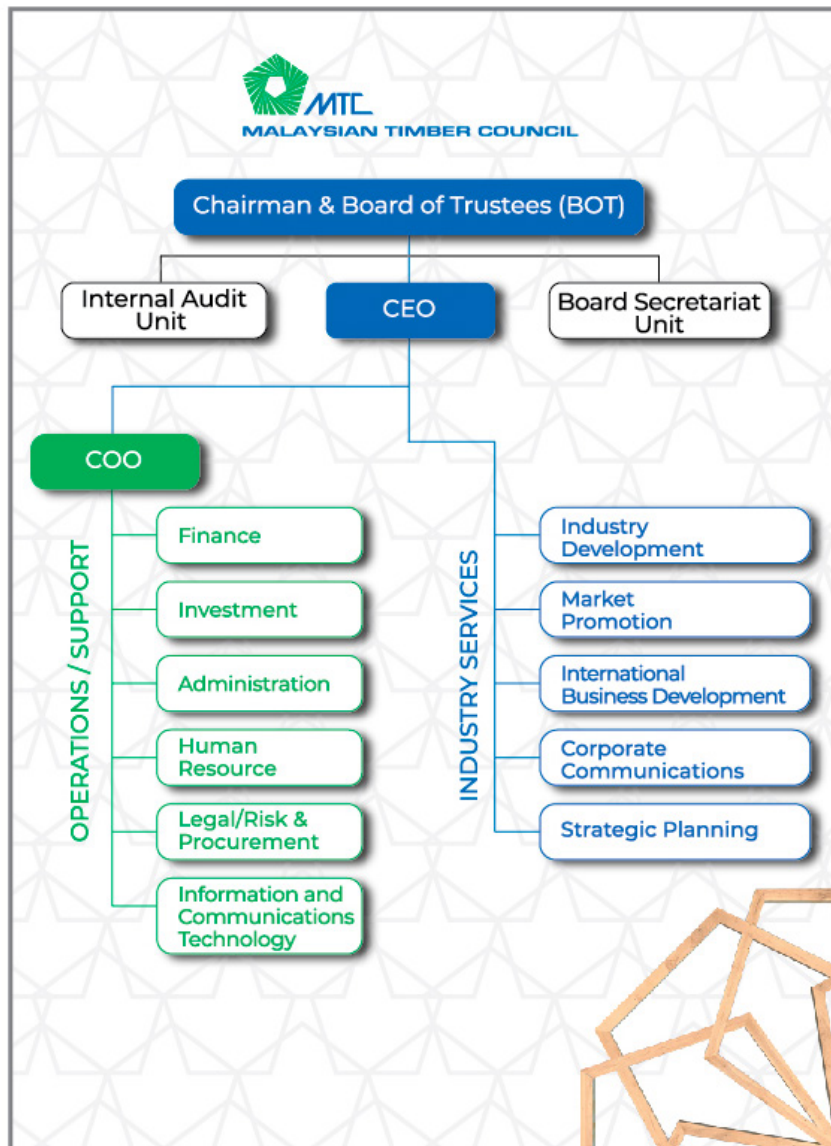
Also present were Mr. S Letchumanan, Senior Undersecretary of MPIC Timber, Tobacco & Kenaf Industries Development Division and MTC Board Trustees including the newly appointed trustee Dato' Ahmad Nadzaruddin Abdul Razak who was also present during the briefing to the Minister. 🌿



A group photo after the briefing session. Dato' Sri Dr. Wee and Tuan Willie are seated fourth and third from left, respectively.

Restructuring MTC to better serve the industry

To enhance its support and services to the timber industry, MTC has restructured its organisational setup. Approved by the MTC Board at its 175th Meeting on 12 May 2020, the council's new organisational structure is as follows:




In the new structure, the CEO directly takes charge of the Industry Services function of MTC while the COO, who reports to the CEO, oversees Operations/Support function.

"This is a strategic move to strengthen the management of MTC by enabling the CEO and COO to focus on their respective areas of responsibilities," said MTC Chairman, Dato' Low Kian Chuan.

He added that the setting up of a new division for International Business Development (IBDD) is to enhance MTC's role in strengthening the timber industry's market presence globally.

IBDD, which oversees all MTC's regional offices covering East Asia, South Asia, Middle East, Africa, Europe and the Americas, will complement the role of the Market Promotion Division in developing market networks and fair participation.

While the divisions and units under Industry Services and Operations/Support report directly to the CEO and COO respectively, two units, namely, Internal Audit and Board Secretariat, will continue to report to the MTC Chairman and the Board.

Besides the restructuring exercise, the Council has also emphasised on developing its human capital as well as ensuring that personnel, including management staff, assigned to take on the various tasks possess the appropriate qualification, knowledge, skill and experience. 

For more information, please visit MTC's website (www.mtc.com.my).

Timber industry in business during pandemic

The timber sector has been operating largely unhindered during the MCO and CMCO, thanks to the government's swift response and strong support



More than 500 timber-based companies were granted approvals to operate during the MCO period.

The Covid-19 pandemic brought much of the world economies to a grinding halt. It was tough for businesses to keep their financial wheels turning and the impact of lockdowns were particularly brutal for companies with little reserves for managing sudden slumps.

Malaysia was not spared as the economic indicators showed a worrying trend during the Movement Control Order (MCO) when it was first implemented from 18-31 March 2020 to contain the pandemic.

As many companies faced mounting challenges to survive as supply and demand for both overseas and domestic markets were disrupted, the government of Malaysia had promptly rolled out the "Prihatin Stimulus Package" of over RM260 billion (USD61 billion) to weather the financial crisis brought on by Covid-19.

Numerous consultation sessions among the various ministries, government agencies and the private sectors took place throughout the MCO to discuss and finetune the implementation of the regulations and SOPs for businesses that were given approval to operate during the MCO.

As many industries were contemplating a shutdown, the timber sector received special approval from the Ministry of Health through the Ministry of Plantation Industries and Commodities (MPIC) to operate under strict adherence to the SOPs during the MCO.

More than 500 timber-based companies were granted approvals of which over 70% were furniture and moulding manufacturers. MTIB helped to evaluate and approve the companies to operate during the MCO.

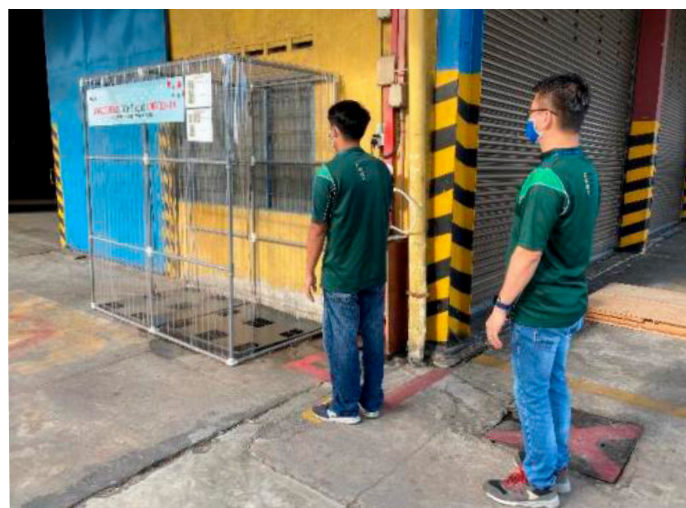
MTC, together with many public and private sector organisations, played a key role in facilitating the smooth operation of the

timber sector by analysing and channelling feedback from the industry players to the government through consultation sessions.

MTC had also conducted an industry-wide survey. Among the findings of the survey were concerns over the slowing global and domestic demands, cashflow management, order fulfilling issues and workforce sustenance.

The MCO was extended in stages and on 4 May 2020 the government implemented the Conditional Movement Control Order (CMCO), which was effective till 9 June 2020 and allowed most economic sectors, including the timber sector, to operate based on regulated SOPs.

One of the primary hiccups during the MCO involved the supply disruption of timber raw materials which was swiftly resolved during the CMCO when the government granted permission for



Factory workers adhering to SOPs.



Mr. Wong assuring buyers that orders will be readily met.



Workers observing social distancing.

the transportation of logs from the landing sites to the respective factories. Since then timber-based manufacturers were assured of regular supply of raw materials for their operations.

The timber sector has been literally up and running during the MCO and CMCO with 90% of manufacturers having resumed operations and more than 60% had begun exporting their products. These timber-based manufacturers are also revisiting their business plans and actively relooking at digitalisation and automation options to further fortify their operations.

The timber industry is an important contributor to the Malaysian economy. In 2019, it achieved RM22.5 billion in exports which is 2.2% of the country's total merchandise export. The industry attracted a total investment worth RM1.1 billion in 2018 and has a domestic market worth RM13.6 billion. The industry also provides employment to more than 50,000 local workers.

The timber sector in Malaysia has been largely operating unhindered, thanks to the quick response and strong support from the government which has also signalled of more assistance to stimulate the economy to enable businesses to weather the pandemic storm.

MTC, too, in line with its role and obligation to the timber industry has taken the necessary steps to transform its operation model and activities to suit the current and post-Covid-19 business needs.

"It's a digital push we are looking at now. We simply cannot ignore this fact and businesses must now consider operating on e-platforms," said MTC Acting CEO Mr Wong Kah Cane, who also assured buyers of Malaysian timber products that any order will be readily met by local manufacturers and suppliers.

"Together with the cooperation and collaboration among various ministries, agencies and the private sector, MTC will do its part to ensure that the Malaysian economy and timber industry will be more resilient post-Covid-19," said Mr. Wong. 🌱

MTC's Skype meetings help resolve stakeholders' woes

When the Malaysian government first announced the Movement Control Order (MCO) from 18-31 March 2020, the Malaysian timber industry suffered a slight setback as only industries which fell under the "essential" categories were allowed to operate.

However, the swift action of the many government agencies (including MTC), organisations and private sectors, coupled with the Malaysian government's timely response as well as understanding enabled timber-based manufacturers to operate during the MCO and the Conditional Movement Control Order (CMCO) which came into effect on 4 May 2020.

While the numerous meetings between all government agencies were on-going, MTC had fervently gathered feedback from the national timber trade associations on how they were coping and what were the problems they were facing through a series of Skype meetings between

March and May 2020. The associations that took part in the meetings were MWMJC, MWIA, TEAM, MFC and PEKA as well as a group of key players in the furniture and wood-based sectors.

Much of the discussions during these online meetings centred on staffing problems; cashflow management; difficulty in obtaining raw materials; transportation issues, loss of revenue due to the slowing global as well as domestic demands.

Most of the issues raised were resolved in good time as more than 500 companies were allowed to operate under strict SOPs during the MCO, thus safeguarding much of their businesses. All timber companies were later allowed to operate during the CMCO period onwards.

These Skype meetings are being held regularly to keep stakeholders abreast of the government regulations as well as solutions to keep the timber industry up and running. 🌱

MTC's sourcing programme sought-after

MTC had set up the Import Assistance Programme (IAP) as an offshore sourcing programme for timber raw materials and planting materials. This programme aims to encourage the development of SMEs and non-SMEs that are involved in the manufacturing of downstream value-added products for both the domestic and export markets.

IAP enables local timber-based manufacturers to import raw materials or planting materials by defraying part of the freight and handling charges. The IAP consists of four categories as follows:


1. Direct Sourcing Programme (DSP)
2. Industrial Testing Programme (ITP)
3. Mission Participation Incentive (MPI)
4. Planting Materials (Seedlings/Plantlets)

The most actively sought-after among the four is the DSP. There were no take up for the remaining three programmes to date under the IAP largely due to the Covid-19 pandemic.

From January to May 2020, DSP amounted to RM674,460.42 was disbursed to 46 of 80 companies that were eligible for this allocation. Of the 80 companies, five companies were first-time applicants.



Sourcing for raw materials is a priority.

MTC had also provided additional incentive under its "IAP Special Additional Quota" where RM47,763.25 was disbursed to two companies. A total of 40 companies were eligible for this special quota. The value of timber purchased from 1 January to 31 May 2020 was RM25,557,191.13. 



IAP enables local timber-based manufacturers to import raw materials.

MTC Zooms in on virtual trade dialogues with European counterparts

MTC conducted its first virtual business dialogue via Zoom with timber industry players from the Netherlands to address trade-related issues on 17 June 2020.

The Covid-19 pandemic is forcing businesses to transform their operations, and online meetings are some of the ways being employed to overcome barriers brought on by the pandemic.

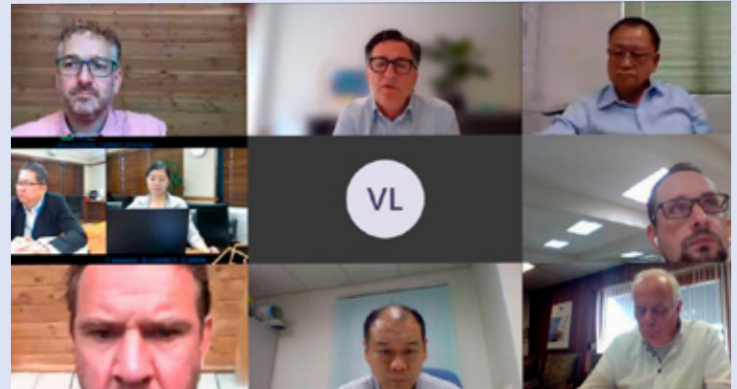
The session, which had MTC's Acting CEO Mr Wong Kah Cane as a speaker, had the participation of close to 30 Malaysian timber-based manufacturers.

The Dutch speakers comprised Paul van den Heuvel Director of Centrum Hout and Ingvar Kristensen Manager of Dekker Hout, who were joined by Erik Leeuw Director of Van Dam Houtprodukten; Frank Habraken, owner of Habraken Houtimport; Tom Trooster Managing Director of Timber Trade Connection; and Cees Boogaardt owner of Boogaardt Hout.

Mr. Wong gave a short briefing on MTC and how the Council operated during the Movement Control Order (MCO). He also highlighted how the timber industry was granted special approval to operate under strict SOPs during the MCO even though it was not part of the essential services sector.

Among the other issues addressed during the dialogue were on buying trends and how businesses are now employing e-commerce.

A similar session was also held with the Polish Economic Chamber of Wood Industry where its Director of International Cooperation, Rafal Gruszczynski, shared trade-related matters and how to boost business between the Eastern European countries and Malaysian timber-based manufacturers. The dialogue session, held on 30 June 2020, had 38 participants including foreign industry players. 🌱



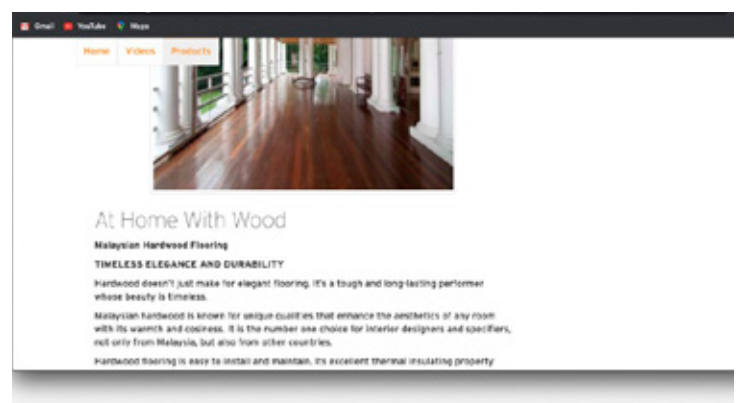
The business dialogues with timber industry players from the Netherlands (above) and Poland (below) in progress.



MTC's first e-booth

The Covid-19 pandemic is changing the nature of business all over the world and many exhibitions which have been on the calendars of timber-based manufacturers for decades were either cancelled or postponed.

However, the National Wood Flooring Association (NWFA) held a virtual expo from 29 April to 1 May 2020 and, for the first time, MTC had an e-booth. MTC garnered 72 virtual visitors and acquired some promising enquiries. 🌱





A date with destiny

When Mr. Goh Chee Yew (pic) first joined the timber sector as a young man in his early 20s, it did not dawn on him that he would one day helm the industry as President of the Malaysian Wood Industries Association and the Malaysian Timber Association. Mr. Goh, who is also MD of Bakti Malaysia Sdn Bhd, shares with *TIMBER MALAYSIA* his experience and knowledge of the timber industry which he has been involved for almost four decades as well as shows his resolve in leading the industry through the Covid-19 pandemic.

TM: Please detail to us the state and development of the Malaysian timber industry over the past decades.

GCY: In the 1970s and 1980s, the timber industry in Malaysia was very much segmented and identified by their respective business activities, namely, logging, sawmilling, joinery and mouldings, plywood and panels, and furniture. Raw materials and business competition were non-issues during that period.

However, the rise of the green movement in Europe started to gain momentum in the mid-1980s when international NGOs began to target tropical timber through advocating boycotts and bans on tropical timber imports. This inevitably affected the export of tropical timber products to markets in Europe.

To ensure the continued acceptance of Malaysian timber and timber products in the European and other environmentally sensitive markets, the government implemented various measures and legislations to strengthen sustainable forest management practices which were first enforced in Malaysia since 1901. With strict forest harvesting practices and well-managed forest management plans in place, log supply to the timber industry saw a gradual reduction.

This resulted in a competitive state and pushed the timber industry to undergo its first stage of transformation whereby from the mid-1980s to late 2000s, an increasing number of sawmills began to bypass intermediaries and direct export their sawntimber and timber products.

Besides which, sawmills also began to promote and commercialise less popular species into the domestic and international markets, ventured into downstream processing activities as well as enhanced their production to achieve high recovery rates instead of mass production.

Likewise, the increasing field of joinery and mouldings manufacturers also pushed this sector of the timber industry to transform and venture into higher value-added production through manufacturing of engineered products as well as usage of imported species as raw materials.

To minimise wastage, Malaysian woodworking mills also began to add value to residue such as sawdust, woodchips and off-cuts starting from the late 1990s.

TM: How has the export and marketing of timber products changed over the years especially with the establishment of MTC in the early 1990s to spearhead this development?

GCY: Malaysia's export of timber and timber products in the international market during the 1970s and 1980s did not face major challenges from other tropical timber producing countries except for Indonesia.

Competition intensified when African and South American timbers began making inroads into our traditional markets especially Europe in the late 1980s followed by China and markets in North America and the Middle East.

Besides the competition posed by alternative sources of supply, we also began to be confronted with challenges from temperate wood species. With advanced research in wood technology, lesser strength and durability temperate wood can be transformed into durable and stronger wood for manufacturing mass timber products such as Glulam and CLT.

The procurement patterns of international buyers have also changed whereby they are increasingly buying more semi-finished and finished products. Buyers are also getting more demanding by imposing more requirements such as quality assurance, legality, just-in-time shipment, and product flexibility.

Prior to the establishment of MTC, timber companies had to rely on their own resources and limited network. With MTC, which serves as an umbrella organisation for the various sectors of the timber industry in Peninsular Malaysia, there is more coordinated strategies and targeted approaches including for the organising and mounting of trade, marketing, technology study as well as raw material sourcing missions.

Through MTC's setup of regional offices covering traditional, emerging and new markets in various parts of the world such as Europe, Middle East, Africa, East and South Asia, and the Americas, the industry can have easier and faster access to market information, trends and contacts.

The regional offices have also opened new market frontiers as well as created inroads into niche markets for higher value products such as the promotion of Malaysian-made lamscants into Europe and China. During business missions, it can also be more advantageous to come under a country banner such as MTC's as this generates confidence on the buyer side.

TM: Malaysia's annual export of timber products has consistently exceeded RM20 billion in recent years? What are the main contributing factors that make Malaysian timber products demandable?

GCY: Since the establishment of MTC, Malaysian manufacturers and exporters have been able to gain greater access to international markets via the various marketing and promotional programmes as well as the global network of MTC.

The products offered by the Malaysian timber industry to the international market are wide ranging, from primarily sawntimber to semi-finished products and furniture.

Where choices are concerned, there are no limits as Malaysian products are made from the highest quality hardwoods that enhance their value as well as from imported species, which are processed into quality value-added products and re-exported.

Malaysian manufacturers have the installed capacity and are equipped with the knowledge and new technology to produce liable and quality timber products, be they be from local or imported timbers.

Products can be manufactured according to buyers' standards and requirements. Buyers are also able to source for more choices of

products from a single supplier as well as order in smaller quantities to be shipped in mixed container loads.

Besides being able to provide confidence to buyers through good service like timely delivery, our industry can also assure that Malaysian timbers used for our production are sourced from either sustainable or legal sources.

For this purpose, there is the Malaysian Timber Certification Scheme, which is endorsed by the Programme for the Endorsement of Forest Certification, and the Malaysian Timber Legality Assurance Systems for Peninsular Malaysia while Sabah and Sarawak have their respective timber legality verification systems.

From our first shipment of sawntimber to Europe in 1930s, Malaysian manufacturers and exporters have established strong and trusting business relationships. This speaks volume of why Malaysian timber products are exported to more than 160 countries in all parts of the world.

TM: The Covid-19 pandemic has disrupted economies around the world and Malaysia is no exception. What are the major areas of impact to the industry and what action plans must be taken as the way forward?

GCY: The government's decision to impose the Movement Control Order (MCO) from 18 March 2020 to control the spread of the Covid-19 virus was a necessary move. However, the industry was unprepared for such a situation where all industries had to stop their operations except for those in the essential sectors.

We are very appreciative that the government accommodated the industry's appeal and granted a special approval for qualified timber companies to resume operations during the MCO.

Several timber industry associations including the Malaysian Timber Association had put forth their proposals to the government through the Ministry of Plantation Industries and Commodities in this regard.

Based on official statistics, more than 500 timber product manufacturers, the majority of whom were furniture companies, were given approval to operate during the MCO period. This helped ensured that orders received prior to the MCO were met.

Nonetheless, the breakdown of the chain of supply of raw materials for almost three months had affected the flow of production. Demand from overseas buyers dropped by more than 50%, with only spot buying to fill up their stocks. Liquidity was probably the key issue for many companies.

The government's Prihatin Rakyat Economic Stimulus Package totalling more than RM260 billion to benefit those affected by the Covid-19 crisis in Malaysia certainly has been of help to companies in the timber industry, especially the SMIs.

With the situation well under control and the country moving past the MCO period, I am pleased to say that the industry has resumed production to almost full capacity. Until the COVID-19 pandemic is over, there is still uncertainty in many aspects.

In the short to medium terms, the industry has taken various initiatives to recover lost ground and reorganise their resources. For the long term, strategic marketing plans are necessary including enhancing their e-marketing platforms.

E-marketing, which is currently popular for timber products like furniture, BJC and decking, is definitely the new trend. The Covid-19 pandemic has made it even more urgent for timber companies to network and conduct their businesses through relevant e-platforms such as e-dialogues and virtual exhibitions. That is the new normal post Covid-19. 🌱



Seng Peng Sawmills

Working towards integrated production

Incorporated on 5 December 1962, Seng Peng Sawmills Sdn Bhd is headquartered in Kuantan, in the state of Pahang. Its production facilities are spread over 50 acres of industrial land in Gambang, also in Pahang.

Says company founder and MD Dato' Loo Swee Thing: "Our company runs four areas of operations, namely, sawmilling, kiln-drying, moulding and logging."

Its sawmilling section, comprising a breakdown bandsaw, an auto pony saw and 13 band saws, has a production capacity of





about 3,000 tons monthly. Its kiln-drying facilities, consisting of six chambers of 70 tons and five chambers of 50 tons, can kiln-dry up to 600 tons of timber per shift.

Under its moulding section, there are three units of finger-jointing machines, four spindle moulders, two jump saws, three rip/multiple/circular/arm saws and a set of opticut software. The company is producing timber flooring as well as door and window frames for the Japanese and European markets.

Adds Dato' Loo: "Besides Japan and Europe, our other major export markets are Thailand and the Middle East, which account for 80 percent of our overall production. The balance of 20 percent is supplied to the local market."

Its raw materials are sourced from its 5,000 hectares of forest concessions where sustainable forest management practices are strictly adhered to. This is to provide assurance to buyers that their products are produced in timbers from sustainable sources.

Kempas, Keruing, Meranti and Ramin are the major species sourced from these concessions. Some of its timbers are also sourced from plantations such as Durian and Rubberwood.

To add value to residue such as saw dust and woodchips from its sawmills and moulding plants, the company is in the process of setting up a pellet-manufacturing line. These pellets can be exported to several markets including South Korea, Japan, Singapore as well as supplied locally.

Come December 2022, Seng Peng Sawmills Sdn Bhd will be marking the 60th year of its establishment in the timber industry. Besides its anniversary celebration, the company is looking at realising its aim of becoming an integrated timber organisation for upstream to downstream production.

"Our expansion plans include going further downstream into the production of fully finished products such as furniture for our existing Japanese and European markets," says Dato' Loo. 🌱





Mr. Khoo Yeow Chong.

Dynamic Furniture Industries

Customising to suit every need and space

Since venturing into the furniture business more than three decades ago, Mr. Khoo Yeow Chong has placed quality as his top priority and held true to his business philosophy of producing and delivering products and services to the satisfaction of his clients and customers.

Mr. Khoo, the founder and MD of Dynamic Furniture Industries (M) Sdn Bhd, is backed by a team of dedicated people with various skills including his partner cum company executive director, Ms. Tan Bee Ngo who oversees the manufacturing line comprising state-of-the-art machinery.

The company specialises in producing all types of sofa and furniture which are custom-made to the requirements of their clients. These range from high-end sofa sets for hotels, restaurants and government buildings to the needs of furniture for homes and business premises including entertainment centres.

Says Mr. Khoo: "We are both, a manufacturer and distributor of high-quality furniture. These include our most sought-after leather and fabric sofa sets, armchairs, dining chairs and bedroom sets.





"Our furniture pieces are artistic and truly one of a kind. Since our pieces are not mass-produced, sizes and detailing can be customised to fit individual needs. They are available in a selection of custom colour finishes and a wide variety of wood and glass tops to complement any environment and space.


"We set trends, break moulds and bend popular ideals of what home furnishing and décor should be. Our unique style is created by borrowing classic forms. Through implementing modern visualisation and inspiration from nature, the end results are incomparable, innovative, original furnishings, storage and accessories to live with and love."

With factory space of over 190,000 square feet in Banting, Selangor, and a work force of more than 250 people, Dynamic Furniture Industries has been able to identify, analyze and resolve issues during all stages of production. It also operates a furniture factory in Mekar Parung Bogor, Indonesia.

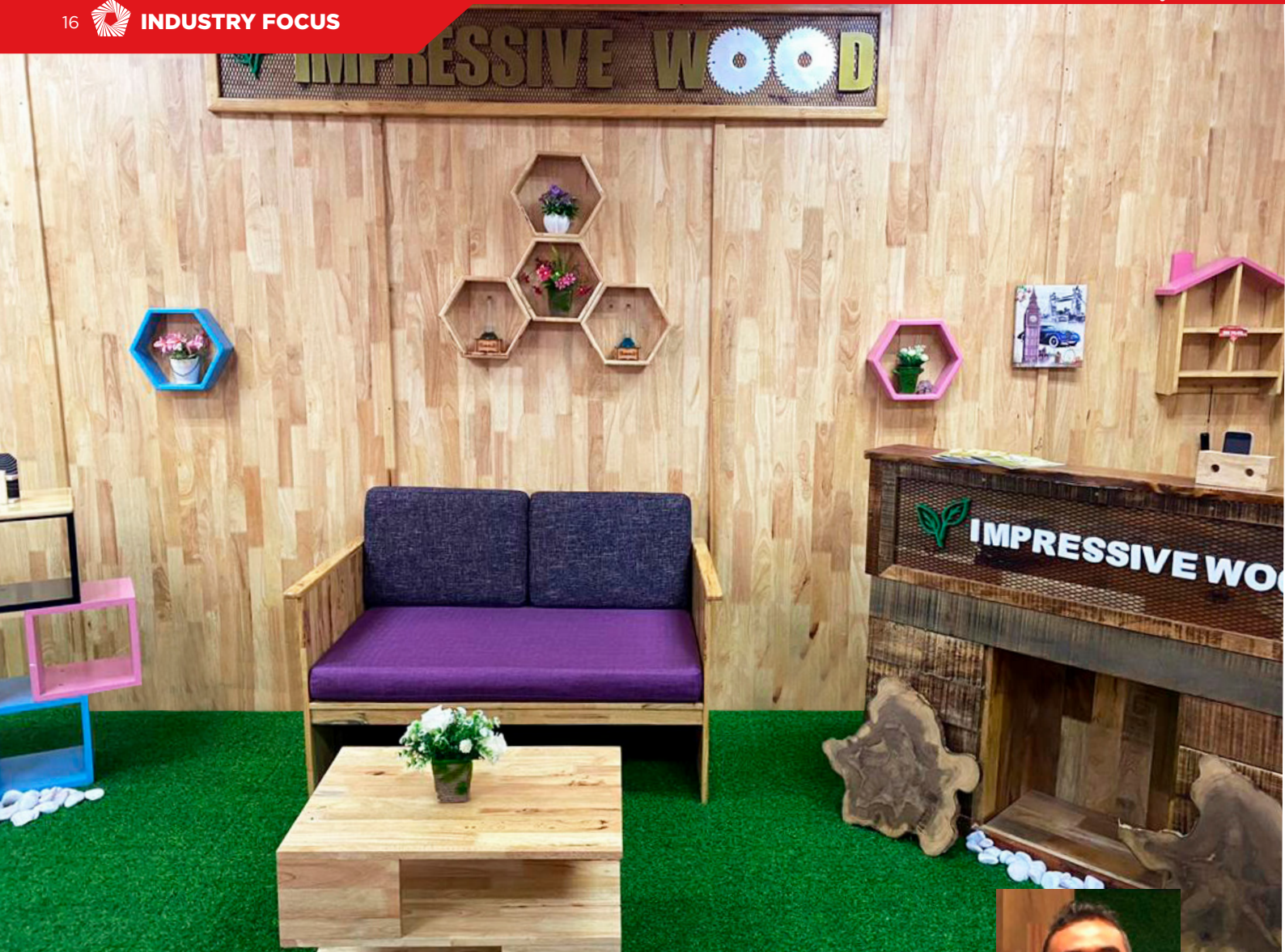
To display the latest designs and models of its sofa and furniture, the company has established a showroom at Kampung Baru Subang in Shah Alam, Selangor. The showroom serves as a showcase for walk-in customers as well as foreign buyers.

On Dynamic Furniture Industries presence overseas, Mr. Khoo says that the Japan, Singapore, Australia and countries in the Middle East such as Kuwait and the UAE are its major markets.

"Our continuous participation in international furniture fairs has brought a lot of keen interest and requests from overseas clients to market our products," adds Mr. Khoo who is also the President of the Malaysian Furniture Council.

Under his leadership, Dynamic Furniture Industries has grown to become a leading furniture and sofa manufacturer and supplier in Malaysia and abroad. Together with Ms. Tan, who has more than 20 years of experience in the industry, the dynamic duo has continued to grow and expand the company steadily. 





Impressive Transforms

From modest sawmiller to manufacturer of mass timber and furniture products



*Tuan Haji Farosham
Naizamohideen*

Since its establishment in the Bukit Rambai Industrial Estate of Melaka in 2014, Impressive Transforms Sdn Bhd (ITSB) is a thriving, locally owned company which started as a producer of sawn planks for direct sale from their factory in untreated and kiln-dried forms.

Says MD, Tuan Haji Farosham Naizamohideen: "From being a supplier of dried wood, ITSB has stepped up its involvement in the wood sector by producing components for furniture manufacturers as well as manufacturing our own furniture."

"ITSB has plans to become a successful manufacturer and supplier of furniture in the future while maintaining its role as one of the country's most sought after sawmills able to supply materials to existing furniture manufacturers."

In addition to their continuing mission of supplying dried timber in custom specifications to local furniture factories and manufacturers of DIY furniture, ITSB is constantly on the lookout for export opportunities in regions such as East Asia and Europe.





Adds Tuan Haji Farosham: “ITSB has benefitted from the various marketing and trade missions as well as timber entrepreneur development programmes organised by MTC and the Malaysian Timber Industry Board (MTIB), which helped to increase our market potential in the overseas market.

“Our company also gained recognition after being awarded third place for Best Booth Design at the Export Furniture Exhibition (EFE) in Kuala Lumpur in 2018. ITSB had participated in EFE in 2018 and 2019 and generated commercial interest from local and overseas buyers including those from Mauritius, Palestine and India.

“We are also very appreciative of the support given by MTIB and MTC in terms of facilities, machinery and training as part of a programme designed to develop and increase production capacities, which helped to enhance our production excellence.”

ITSB is part of the IFWAT Group, which was set up by Tuan Haji Farosham and his brother Datuk Haji Azharin Naizamohideen. IFWAT has been involved widely in the local timber industry with operations in timber harvesting and processing for more than 15 years.

These include cultivating and supplying of Rubberwood (*Hevea brasiliensis*) to producing finger jointed boards and whole pieces of furniture. Under Tuan Haji Farosham’s stewardship, ITSB rapidly expanded its scope of expertise while increasing the value of wood products further down the supply chain.

Today, ITSB is also into producing engineered mass timber products such as Cross Laminated Timber (CLT) and Glued Laminated Timber (Glulam). The company has successfully used its own CLT and Glulam to construct a tropical chalet within six days.

“We are very proud to lay claim as one the companies in Malaysia that has a complete production cycle under one roof, starting from timber harvesting to the manufacture of finished products such as furniture,” concludes Tuan Haji Farosham. 🌱





LKM Plywood & Timber

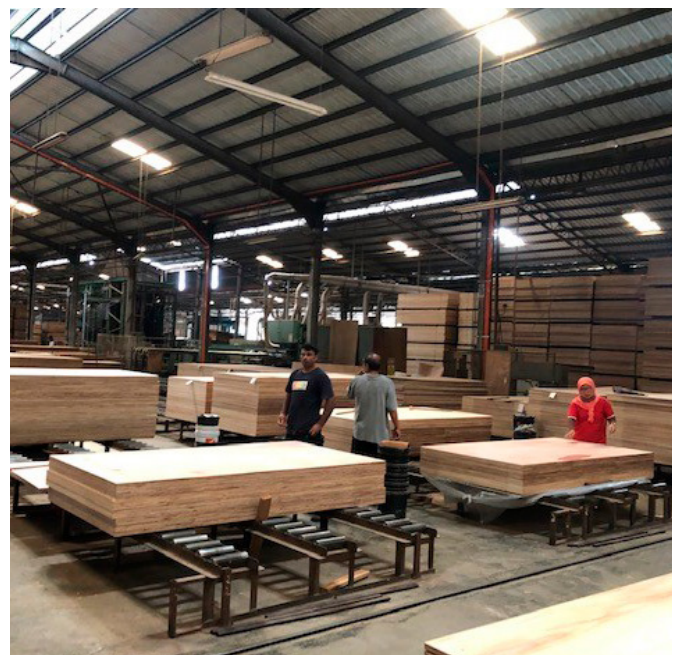
Committed to quality and sustainability

With an excellent track record of more than half a century, LKM Plywood & Timber Sdn Bhd and its sister company New Tong Fong Plywood Sdn Bhd are a well-established and leading plywood and timber producer, exporter as well as importer in Malaysia. The Group is based in Kuantan, Pahang.

Founded in the 1960s by the late Mr. Lai Kok Ming J.P, the Group is family-owned and is now managed by the third generation of the Lai family. The Group is dedicated to providing quality products to its customers and business partners around the world while taking on a leading role in building a sustainable future for the generations to come. The Group is well known in Malaysia and around the world with its 'Rocket' Trade Mark plywood which is a mark of quality assurance and commitment to its customers and business partners.

Says Executive Director, Mr. Lai Yin Tjun: "To deliver the best quality and value to our customers, The Group has continuously searched for new technology and product innovation.

"The Group's constant quest for technological innovation in its products through investing in cutting-edge manufacturing technology ensures that our customers always get the highest quality products that more than meet global standards.





"We pride ourselves with deep technical know-how and professional plywood mill management experience to give our customers reliable products and services. We train our employees to enhance their industry knowledge and skills to achieve the highest productivity level possible."

Besides being one of the pioneer plywood manufacturers in Peninsular Malaysia, the Group has also solidified its reputation as a responsible and caring industry player since its establishment. Its environmental conservation initiatives extend over to purchasing timber from loggers who practise sustainable forest management.

Adds Mr. Lai: "Being a responsible plywood manufacturer, the Group maintains a strict policy to only purchase timber logs from legitimate, well-managed and plantation forests."


"Stringent steps are taken in every echelon of our operations to trace and document the origins of all the logs to protect the interest of our buyers."

"We aim to maximise every single resource to achieve zero wastage in our efforts to conserve and protect our environment. Our vision is to reduce the need for new wood from existing forests in our bid to protect the environment and build a sustainable future. We make every possible human and technological effort to use every single piece of wood available and turn each one into useable products."

Besides MR (Moisture Resistant) and WBP (Weather and Boil Proof) plywood of various grade, thickness and size, the Group also produces blockboards, film-face plywood, flexible plywood and as well as LVL.

Besides its commitment to building long-term relationship with its customers through complete customer care and attention, the Group also emphasizes on its employees' welfare by ensuring a safe and healthy working environment according to industry regulations.

The Group also strives to safeguard and enhance its shareholders' value by achieving long-term income growth with consistent and attractive returns on capital.

"At LKM Plywood & Timber and New Tong Fong Plywood, we grow our business with the interest of our customers, employees, shareholders, the community and the environment in mind," says Mr. Lai. 





In total, there had been 12,000 views of the various sessions. Photo credit IISD.

June Momentum for Climate Change

Governments adopted the Paris Agreement on climate change in 2015 and, doing so, agreed to take measures to limit global warming to 1.5 to 2°C above pre-industrial levels. The first round of national climate commitments, known as nationally determined contributions (NDCs), submitted by governments in 2015 fell short of what is necessary to prevent the worst climate impacts.

However, foreseeing this, countries included five-year milestones/cycles in the Agreement's design, intended to take stock of progress and encourage more ambitious contributions. Thus, the Chile Madrid Time for Action adopted in 2019 stresses the urgency of enhanced ambition to ensure the highest possible efforts by all parties. Given this, all governments are now called on to submit new or revised, more ambitious NDCs by the end of 2020.

Parties to the United Nations Framework Convention on Climate Change (UNFCCC) and the Paris Agreement were planning to meet in Bonn in June 2020 to continue work and support greater ambition. However, due to the COVID-19 pandemic, the Bonn Climate Change conference was postponed from June to October 2020.

While a face-to-face meeting was not possible, the UNFCCC decided to hold a series of virtual events to keep climate action and momentum alive, and to discuss ongoing and emerging issues, such as a sustainable recovery from the pandemic. They also decided that formal negotiations or decision-making would not take place at these events given their virtual format.

Over the course of eight weekdays starting 1 June 2020, 17 open events and six additional events requiring registration, including meetings of the constituted bodies, took place. Several events related to the work of the constituted bodies, which are the bodies that focus on implementing various aspects of the Convention and the Paris Agreement. These technical bodies provided updates on their work and future plans.

Formal meetings also took place, with the committee to facilitate implementation and promote compliance under the Paris Agreement holding its first meeting and lead reviewers of Biennial Reports and National Communications met to share experiences. Other events discussed ongoing and emerging issues, such as a sustainable recovery from the pandemic.

The June Momentum for Climate Change was conducted under the guidance of the Chairs of the Subsidiary Body for Implementation (SBI) and the Subsidiary Body for Scientific and Technological Advice (SBSTA). These online events offered an opportunity for parties and other stakeholders to continue exchanging views and sharing information in order to maintain momentum and showcase how climate action is progressing under the special circumstances the world is currently facing.

Despite the challenges of finding suitable times to meet with participants living in numerous time zones with varying degrees of internet connectivity, there were very few visible problems during the meeting. In some cases, there was poor video quality and some audio issues, but this was to be expected.

Engagement with the online audience of the open events was relatively limited. However, at least one event addressed questions submitted in advance, some accepted questions submitted through the online platform during the event, and two had live interactive discussions with audience members. By the closing session on 10 June, there had been 12,000 views of the various sessions. 🌱

Source: IISD Reporting Services.

Petersberg Climate Dialogue XI

The 11th Petersberg Climate Dialogue concluded with a commitment to a green recovery built on solidarity. At the invitation of German Environment Minister Svenja Schulze and UK Secretary of State for Business, Energy and Industrial Strategy Alok Sharma, around 30 climate ministers from all over the globe participated in the Climate Dialogue via video conference. German Chancellor Angela Merkel and UN Secretary-General António Guterres also took part in the meeting.

This year's Petersberg Climate Dialogue from 27-28 April focused on how to pave the way for the international community to emerge from the acute coronavirus pandemic in a more resilient and climate-friendly way. The meeting took place for the first time in virtual mode, which also allowed broader participation via social networks.

During the high-level segment on 28 April, UN Secretary-General António Guterres, UN Climate Chief Patricia Espinosa and Chancellor Merkel were joined by the 30 ministers to take the discussions forward. Statements prepared by the high-level participants were shared ahead of the meeting.


Schulze stated: "The coronavirus pandemic does not allow us to pursue business-as-usual, and that includes our climate policy. At the same time, this crisis underscores the importance of multilateral cooperation. A coordinated international approach remains essential in climate policy too. Climate action hinges on how the international community organises the recovery of the global economy. That is why our way out of the current crisis is also an issue for climate ministers and for the international level."

Sharma stated: "As President of COP26, I am absolutely committed to increasing global climate ambition so that we deliver on the Paris Agreement. The world must work together, as it has to deal with the coronavirus pandemic, to support a green and resilient recovery, which leaves no one behind."

As in previous years, the Petersberg Climate Dialogue offered a platform for the informal political discussion of topical issues of international climate policy. The Petersberg Climate Dialogue had become an established key event for international climate diplomacy and, even in these difficult times, brought together ministers from some 30 countries.

The goal is a green recovery. This means not only creating new jobs but also advancing climate action in ways that make the entire world more resilient. It also includes the question of how to design stimulus programmes that will facilitate a more committed climate policy in future.

Alongside the regular discussions between ministers from all regions of the world, this year, for the first time, there were also exchanges between non-state actors, including businesses, unions, NGOs, scientists and cities. In addition, experts from the invited parties discussed how to make progress in the international climate negotiations despite the pandemic-related restrictions.

The German government has been organising the Petersberg Climate Dialogue since 2010. In its first year, the event was held on the Petersberg near Bonn. The co-chair of the Climate Dialogue is the country presiding over the next UN Climate Change Conference. 

Source: UN Climate Change News.

The dialogue concluded with a commitment to a green recovery built on solidarity. Photo credit: UNFCCC





Photo Credit: Sarawak Public Communications Unit.

SFM among Sarawak's post-Covid focus

Sarawak has reviewed its development strategies under the 12th Malaysia Plan (2021-2025) in order for the state to recover from the economic impact of Covid-19 as well as remain resilient, adapt to the “new normal” and promote future economic growth.

Speaking to the media on 6 May 2020, Chief Minister, YAB Datuk Patinggi (Dr) Abang Haji Abdul Rahman Zohari bin Tun

Datuk Abang Haji Openg (pic) said that Sarawak will develop its economic, social and governance sectors based on two core principles of digital economy and environmental sustainability.

“To enhance our economic productivity and competitiveness, we will intensify our digital economy agenda across all sectors of Sarawak’s economy. Environmental sustainability will feature prominently in our future development plan. We will ensure that Sarawak achieves a clean, healthy and resilient environment for current and future generations,” he said.

He also said that the state government will focus on sustainable forest management through partnerships with businesses and the community. Among the key initiatives are aggressive industrial forest plantations, reforestation of degraded areas and international certification of our forest management practices. This effort will help preserve the forest for the future and generate revenue for Sarawak. 🌱

Thumbs-up for Sabah's commitment to state forest

The Malaysian Nature Society (MNS) Sabah Branch has lauded the state government's commitment to gazette high biodiversity forests as Totally Protected Areas (TPA) with the aim of protecting at least 30 per cent of the state's forests by 2025.

Its chairperson, Anna Wong, said the statement by TYT Yang di-Pertua Negeri Sabah, Tun Juhar Mahiruddin during the state government policy speech at the 1st Meeting of the 3rd term of the Sabah State Assembly sitting on 16 April 2020, is a boon to Sabah's forests and biodiversity.

“With 1.9 million hectares, or 25 per cent, of the forests already gazetted, Sabah leads the country in protecting its natural treasures, which include the pygmy elephant, orangutan and other endemic flora and fauna. MNS Sabah fully supports the state's green pledge and is very happy to lend any assistance to realise this vision,” she said in a statement on 4 May 2020.

Wong said the MNS offers to share its knowledge and data on Important Bird and Biodiversity Areas (IBAs), which could help identify forests that need to be gazetted as TPAs, or current TPAs that may be under threat. 🌱

Source: BERNAMA.



Photo credit: MNS



Export Furniture Exhibition, Malaysia

COMPLIMENTARY
BUYERS' HOTEL STAY

+603-6270 9332

info@efe.my

**10-13
MARCH
2021** | **KLCC**
www.efe.my

Presented by:



MALAYSIAN FURNITURE
COUNCIL

Organised by:



EFE EXPO SDN BHD

Endorsed by:



MINISTRY OF PLANTATION
INDUSTRIES AND COMMODITIES



MALAYSIAN TIMBER
INDUSTRY BOARD



MALAYSIAN TIMBER COUNCIL



MALAYSIA EXTERNAL TRADE
DEVELOPMENT CORPORATION



MALAYSIA INVESTMENT
DEVELOPMENT AUTHORITY



MALAYSIA TOURISM
PROMOTION BOARD



COUNCIL OF ASIA
FURNITURE ASSOCIATIONS



ASEAN FURNITURE
INDUSTRIES COUNCIL

Supported by:



Malaysia
Convention
& Exhibition
Bureau

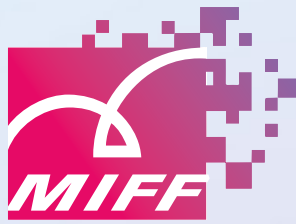


Strategic partner:



Shanghai Nag Exhibition Co., Ltd

Malaysian International Furniture Fair
presents



furniverse

MIFF Online Exhibition

Asia Pacific Market 11-13 Aug 2020

North America & South America Market 18-20 Aug 2020

Europe, Middle East & Africa Market 26-28 Aug 2020

connecting global furniture markets
with real-time trade opportunities



www.miff.com.my