

timber malaysia

Published by Malaysian Timber Council



Issue: Quarter 1

2020

ISSN 1394-6196



Inside

- ♦ New MPIC Minister and Deputy Ministers
- ♦ Covid-19 - Timber industry provides financial aid
- ♦ MTC appoints Acting CEO, new COO

Spotlight
Old is new again @ The Barn, Penang



Editorial

Dear Readers,

MTC extends its heartiest congratulations to YB Dato' Dr. Mohd Khairuddin Bin Aman Razali on his appointment as the new Minister of Plantation Industries and Commodities. MTC also congratulates YB Dato' Sri Dr. Wee Jeck Seng and YB Tuan Willie Anak Mongin as Deputy Ministers in the Ministry. MTC looks forward to their stewardship in steering the Malaysian timber industry to greater heights. **See page 4 for a report on their appointments.**

MTC wishes to announce the appointment of Mr. Wong Kah Cane as its Acting Chief Executive Officer effective 13 March 2020, and Mr. Roger Chin Chew Choy as its new Chief Operations Officer from 1 March 2020. The leadership of Mr. Wong and Mr. Chin in the MTC management team has been put in place by the Council's Board of Trustees with the best interest of the Malaysian timber industry at heart. **Turn to page 6 for the CVs of Mr. Wong and Mr. Chin.**

Despite facing the challenges posed by the Covid-19 pandemic, members of the Malaysian timber industry had promptly responded to MTC's Covid-19 Humanitarian Aid Fund call. Within days from its launch on 25 March 2020, a sum of more than RM890,000 was raised. MTC wishes to thank the six national timber associations and the 100-over timber companies for contributing towards the fund. **Turn to page 5 to read on this noble act by the industry as well as on a summary of the RM260 billion economic stimulus package allocated by the Malaysian government to face the Covid-19 crisis.**

In *A CASE FOR TIMBER*, we feature two individuals who, although from different trades, share a same passion, for wood, that is. Penang-based Gooi Kok Wah shows his love for reclaimed timbers through applying them in his many projects throughout the country, one of which is The Barn in Penang, which is a showcase on the reuse of salvaged timbers and repurposed antique furniture. For Melaka-born Desmond Ho, his humble beginnings and childhood days of living in a traditional wooden house surrounded by greens and complemented with wooden fixtures has spurred him to conceptualise a garden identity that is truly Malaysian. **For a delightful read on the endeavours of Gooi and Desmond, turn to pages 12 to 23.**

Starting this year, the Q1 and Q3 issues *TIMBER MALAYSIA* will be published in electronic version while the Q2 and Q4 issues will still be made available in printed form. This is in sync with the digital age whereby our publication materials available in electronic version will enable industry members and the public in general to gain fast access to information on trade and green subjects, respectively.

Happy reading!

The Editor.



MALAYSIAN TIMBER COUNCIL

MTC HEADQUARTERS

T +60 3 9281 1999
F +60 3 9282 8999
E council@mtc.com.my

MTC AMERICAS

T +1 832 871 5130
F +1 832 871 5001
E americas@mtc.com.my

MTC EUROPE

T +31 (0)10 282 1260
E europe@mtc.com.my

MTC EAST ASIA

T +86 20 3877 3019
F +86 20 3877 3091
E eastasia@mtc.com.my

MTC SOUTH ASIA

T +91 80 4853 8888
F +91 80 4853 8888
E southasia@mtc.com.my



www.mtc.com.my



MTC_twt



mtc_my



malaysiantimbercouncil



malaysiantimber



malaysian timber council



malaysian timber council

IMPORTANT NOTICE

For the year 2020, MTC has identified more than 20 international fairs for marketplace promotion as well as setting up of MTC Pavilions.

In view of the Covid-19 pandemic, which has resulted in many cancellations and postponements of trade exhibitions and related business events in various markets across the globe, MTC's participation in many fairs has been reduced, cancelled, postponed or turned into virtual exhibitions.

MTC has and will continue to review and re-strategise its programmes and activities as and when necessary for the best interest of its industry members and buyers of Malaysian timber-based products.

Updates on MTC and its programmes and services will be made available from time to time on our website (www.mtc.com.my). For urgent enquiries, kindly contact the following MTC Corporate Communications personnel:

Noraihan Abdul Rahman

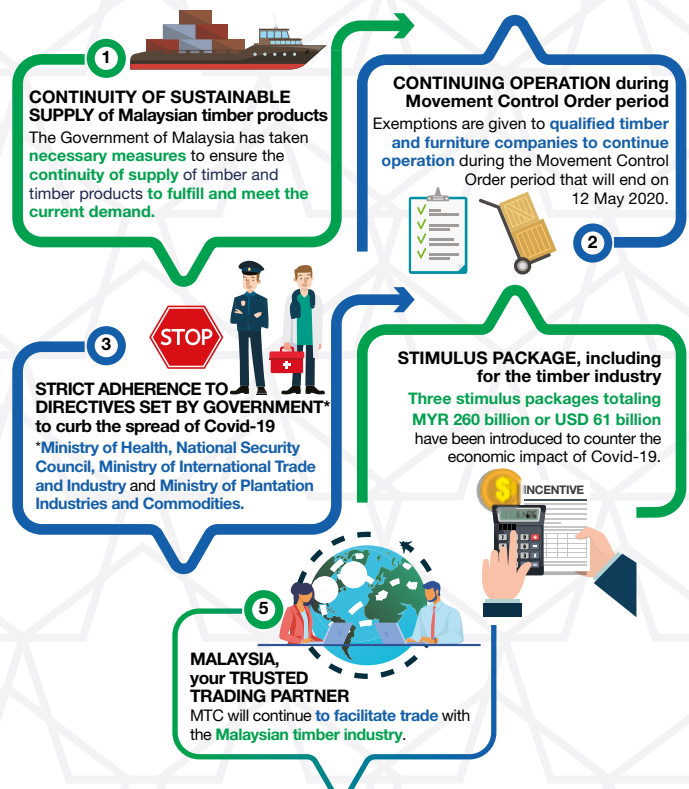
(noraihan@mtc.com.my / +6017 8804537)

Andrew Kong

(andrew@mtc.com.my / +6012 6818838).

MALAYSIAN TIMBER INDUSTRY

Meeting buyers' needs whilst coping to contain Covid-19



CONTENTS

NEWS



- 4 New MPIC Minister and Deputy Ministers
- 4 RM260 billion economic stimulus package to face Covid-19 crisis
- 5 Timber industry provides financial aid to battle Covid-19
- 6 MTC appoints Acting CEO and new COO
- 6 Regional Head for MTC Americas
- 7 Timber industry ups export performance
- 7 Visit by Finnish Sawmill Association
- 8 Manufacturers make headway with FIPM
- 9 Outreach programme with MWMJC
- 9 SKLWIA celebrates 68th anniversary

MARKET PROMOTION



- 10 MTC debuts at Nepal Wood
- 10 The lights never dim at IndiaWood

A CASE FOR TIMBER



- 12 Old is new again
- 19 Vancouver's tallest timber tower
- 20 The making of a Malaysian garden

GLOBAL COMMUNITY



- 24 APEC EGILAT17 Meeting and Workshop
- 25 IPCC-52

GREEN GROWTH

- 26 New Urban Green Area for Sibul
- 26 Sabah appoints 100 volunteer forestry guides
- 27 Kuala Lumpur Forest Eco Park

New MPIC Minister and Deputy Ministers

YB Dato' Dr. Mohd Khairuddin Bin Aman Razali has been appointed as the new Minister in the Ministry of Plantation Industries and Commodities (MPIC), previously known as the Ministry of Primary Industries.

Dato' Dr. Mohd Khairuddin was among 32 Ministers of the new Malaysian Cabinet announced by Prime Minister, YAB Tan Sri Dato' Hj. Muhyiddin Bin Hj. Mohd. Yassin on 9 March 2020.

The new Ministers were sworn in before the Yang di-Pertuan Agong Al-Sultan Abdullah Ri'ayatuddin Al-Mustafa Billah Shah at Istana Melawati in Kuala Lumpur on 10 March.

Appointed as MPIC Deputy Ministers are YB Dato' Sri Dr. Wee Jeck Seng, and YB Tuan Willie Anak Mongin. Dato' Sri Dr. Wee had previously served as MTC Chairman, from 2015-2016.

The new Minister and Deputy Ministers attended a briefing by MPIC's Secretary-General, YBhg. Tuan Ravi Muthayah, and other senior officials at the Ministry in Putrajaya after the swearing-in ceremony.

Speaking to the media after the briefing, Dato' Dr. Mohd Khairuddin said good governance practices at the Ministry will be strengthened with integrity and quality, while emphasising effective public resource management.



Dato' Dr. Mohd. Khairuddin (centre) with Dato' Sri Dr. Wee (left) and Tuan Willie at the briefing. Photo credit: MPIC.

"I will also build a strong team that combines various expertise to meet the challenges in the plantation and commodity sectors such as sustainability issues, product discrimination and anti-palm oil campaign at the international level," he said. 🌱

RM260 billion economic stimulus package to face Covid-19 crisis

The government has allocated RM260 billion under its Prihatin Rakyat Economic Stimulus Package (Prihatin) to benefit those affected by the Covid-19 crisis in Malaysia.

Prihatin is aimed at easing the burden of Malaysians amid the global pandemic in the following manner:

- RM128 billion - Protect the welfare and well-being of the people;
- RM110 billion - Support businesses including SMEs;
- RM2 billion - Strengthen the economy; and
- RM20 billion - Economic Stimulus Package (announced on 27 February 2020).

For ease of reference, MTC has prepared a summary of the Prihatin package initiatives applicable for the timber industry under the following sections:

- Deferment/Exemption of Statutory Contributions, Tax and Levy;
- Reduction of Operating Cost;
- Financing Facilities;
- Additional Financial Assistance for SMEs; and
- Others.

The summary has been sent by email to the secretariats of all national-level timber trade associations in the country. It is also accessible via the Member Section (password required) on the MTC website (www.mtc.com.my).

For further information or enquiries, kindly email MTC's Strategic Planning Division, attention of Puan Mariatul Amira (amira@mtc.com.my) or Cik Puteri Nur Aisyah (aisyah@mtc.com.my). 🌱



Dato' Dr. Mohd. Khairuddin receiving the contribution from Dato' Low. Looking on is Mr. Goh.

Timber industry provides financial aid to battle Covid-19

The Malaysian Timber Council (MTC) together with six national timber associations and more than 100 timber-based companies offer financial aid as part of humanitarian response plans in the fight against Covid-19.

The chorus of the Coronavirus (Covid-19) pandemic is growing louder each day with the rising number of patients being tested positive. As the new number of cases multiply, it is clear that curbing this pandemic will be a full-blown battle, which must be fought by everyone, especially those in the frontline.

"We are truly concerned by the circumstances by which our medical staff are operating under without sufficient and proper equipment and risking their lives. The sacrifices made by these courageous doctors and nurses as well as other caregivers are overwhelming and are profoundly appreciated," said MTC Chairman, Dato' Low Kian Chuan.

"In a move to ease the government's burden in curbing the widespread of this pandemic, MTC has set up the Covid-19 Humanitarian Aid Fund in collaboration with six national timber associations and over 100 timber-based companies, which together have raised a total of more than RM890,000," said Dato' Low.

Dato' Low handed over the collection to the Minister of Plantation Industries and Commodities, YB Dato' Dr Mohd Khairuddin Aman Razali on 29 March 2020 at the Akademi TDM in Terengganu. Also present at the event was MTC Board Trustee, Mr Goh Chee Yew.

The proceeds will be used to supplement the needs of the Ministry of Health, the frontliners fighting the Covid-19 and the non-governmental organisations which will directly channel the funds to the people affected by the Movement Control Order.

The six timber associations which heeded MTC's humanitarian call were the Malaysian Wood Moulding & Joinery Council (RM150,000); the Malaysian Wood Industries Association (RM100,000); Association of Malaysian Bumiputra Timber and Furniture Entrepreneurs (RM50,000); Malaysian Furniture Council (RM50,000); Timber Exporters' Association of Malaysia (RM50,000); and the Malaysian Timber Association (RM50,000). More than 100 timber companies had also contributed towards the fund. MTC contributed RM250,000 to the fund. 

MTC appoints Acting CEO and new COO

MTC has appointed Mr Wong Kah Cane as its Acting Chief Executive Officer effective 13 March 2020. Mr. Wong, who joined MTC on 1 November 2019 as Deputy CEO, takes over from Mr. Richard Yu Tuan Chong upon the expiry of the latter's contract.

Mr. Wong, 52, who graduated with a degree in Business Administration from Universiti Utara Malaysia in 1992, started his career transforming SMEs into successful enterprises by bringing in experts for training programmes which centred on strategic management, quality control, sales and marketing.

He is most noted for his contributions in Eu Yan Sang, a traditional Chinese medicine company. Mr. Wong joined Eu Yan Sang in 2000 as its Area Sales Manager and in 2006, he was appointed as General Manager of the company leading Eu Yan Sang's business development, sales and marketing operations as well as branding.

Mr. Wong left Eu Yan Sang as its Senior General Manager to take up the post of General Manager at Everpro Sdn Bhd in 2016 and in 2018, he joined Vistage Malaysia as its Business Coach providing training for CEOs. In August the same year, Mr. Wong was appointed as an Independent Member of MTC's Board of Trustees.

MTC has also appointed Mr. Roger Chin Chew Choy as its new Chief Operations Officer effective 1 March 2020. Prior to joining MTC, Mr. Roger Chin was attached to Advance Information Marketing Berhad where he served as its Executive Director since January 2018.

A Bachelor of Law graduate from the University of Wolverhampton, United Kingdom, Mr. Roger Chin, 54, brings with him more than 25 years of experience in the financial services sector with international banks specialising in consumer, corporate and Islamic banking.

His career in the banking industry started in 1993 with Standard Chartered Bank in 1993 where was seconded to its regional team in Singapore serving in various Asian countries including



*Mr. Wong Kah Cane
Acting CEO*



*Mr. Roger Chin
Chief Operations Officer*

Indonesia, Philippines, India, Pakistan and Bangladesh. He had also held senior management positions in Citibank, GE Capital, Hong Leong Bank and Kuwait Finance House.

"The appointment of Mr. Wong Kah Cane and Mr. Roger Chin is to further strengthen the management team of MTC," said Chairman Dato' Low Kian Chuan. He added that with their combined fields of expertise, Mr. Wong and Mr. Chin will be great assets to the timber industry and MTC, a council under the Ministry of Plantation Industries and Commodities. 🌿

Regional Head for MTC Americas



*Mr. Chow Khoon Liam
MTC Americas Regional Head*

MTC has appointed Mr. Chow Khoon Liam to head its new Americas office, which is based in Houston USA. Mr. Chow received his postgraduate degree in Marketing from the Birmingham City University and is a certified Chartered Marketer from The Chartered Institute of Marketing (UK).

Mr. Chow, who has been in the marketing and medical field for 23 years, has many accomplishments under his belt. He had helped raise USD6 million in equity-based funds for a transpacific FDA clinical trial involving stem cell research between the United States and Malaysia.

The contact details of MTC Americas office details are as follows:
700 Milam St. STE #1300
Houston, TX 77002 USA
T: +1 832 871 5130
F: +1 832 871 5001
E: americas@mtc.com.my.


Timber industry ups export performance

Malaysia's total export of timber products improved by 1% year-on-year in 2019, registering a total export value of RM22.5 billion compared to RM22.3 billion a year earlier. This was driven by a substantial increase in the wooden furniture export to RM9.1 billion (+17.4% year-on-year) as well as wooden frames, which registered RM127 million in export earnings (+2.7% year-on-year).

The major driver of the improvement in the total export of timber products in 2019 was due to the sharp increase in exports to the United States, especially for wooden furniture, on the back of supply chain diversion caused by the US-China trade standoff. Exports of wooden furniture from Malaysia to US increased exponentially by 44.7% year-on-year to RM4.2 billion, followed by BJC increasing by 31.3% to RM165.7 million and mouldings increasing by 22.6% to RM130.2 million.

Besides the US, China was also a major importer of Malaysian timber products, surpassing India as the third largest market for Malaysia. Exports of timber products to China increased by more than 60% in 2019 compared to 2018.

Other than wooden furniture and frames, exports of other timber products experienced contractions of between 0.2% to 43.6% due to the largely slowing global economy towards the end of 2019, completion of construction activities for Tokyo Olympics 2020 and sluggish construction activities in major markets.

Exports of major timber products such as sawntimber declined by 25.5% year-on-year to RM3.4 billion, followed by plywood declining by 43.6% to RM3.4 billion, MDF declining by 10.6% to RM1.1 billion, BJC declining by 2.1% to RM1 billion and mouldings declining by 0.2% to RM0.9 billion. These are the top five timber products after wooden furniture. 




Wooden furniture and frames increased Malaysia's timber export earnings for 2019.



Visit by Finnish Sawmill Association

Following MTC's Resource Business Mission to Europe in August 2019 which also covered Finland, the Finnish Sawmill Association conducted a reciprocal visit to Malaysia from 17-19 February 2020 to enhance trade relations between the timber sectors of both countries.

The Finnish Sawmill Association delegation comprised Markku Rokkila, Project Manager of Wood from Finland Oy; Harri Rantala, Export Director of Vrsowood Oy; Pekka Sainio, Managing Director of Metsäntuottajat Oy; Jussi Walta, Sales Manager of HASA Oy; and Tomi Halme, Area Manager of Lunawood.

The delegates had a meeting with MTC, Malaysian Timber Industry Board and the Embassy of Finland officers as well as members from the Malaysian timber associations. Factory visits were also conducted for the Finnish delegation. 



The meeting at MTC in progress.

Manufacturers make headway with FIPM

One of MTC's sought-after programmes is the FIPM, which is a financial incentive for the purchase of machinery, to encourage SMEs to adopt the latest technology in mechanisation/automation to improve their production of value-added wood-based products as well as reduce labour dependency. The FIPM provides partial reimbursement on the price of the machines and freight charges.

As at December 2019, 28 companies received this financial incentive, among them were LTH Timber Export Import (M) Sdn. Bhd and Deseno Furniture Industries Sdn Bhd.

LTH, which was established in 2007, is based in Nibong Tebal, Penang. Its main products are glued-laminated scantlings and 80% of its products are exported. LTH's main export destination is Europe. The company has 38 local and 80 foreign workers.

With MTC's FIPM, LTH purchased a new planer saw and a cross-cutting machine. The planer saw improved the ripping and double-sided planing processes where the hourly production increased by 108% and the labour dependency was brought down from 14 to six. As for the cross-cutting machine, the hourly production increased by 104% while the labour needs were drastically lessened from 20 to seven workers.

Deseno, which is furniture company, was established in 2003 where 90% of its products are exported primarily to Singapore where it provides custom-made furniture. It has 19 local and 11 foreign workers.

Deseno purchased three machines under the FIPM programme. They were the CNC cutting machine, automatic edge banding machine and a CNC horizontal drilling machine.

The CNC cutting machine was purchased to upgrade the existing cutting and shaping processes while the automatic edge banding machine was bought to upgrade the manual



Deseno's labour needs have been drastically lessened.

gluing of the ABS edging, and the CNC horizontal drilling machine was purchased to improve the assembly process by stapling and screwing.

With the CNC cutting machine, the hourly production output increased by 75% and the number of workers was reduced by 67% while with the automatic edge banding machine the hourly production output increased by 540% and the number of workers was reduced from three to one. The CNC horizontal drilling machine improved the assembly process by 167% and the number of workers reduced from two to one.

All these machinery not only bettered production capacities but provided reliability, precision and high-quality output as well as space-saving benefits. 🌱



LTH purchased two machines under the FIPM programme.



MWMJC representatives and MTC management team after the meeting.

Outreach programme with MWMJC

MTC met with members of the Malaysian Wood Moulding and Joinery Council (MWMJC) as part of the Council's Outreach Programme with its stakeholders on 14 February 2020. MTC Deputy CEO Mr Wong Kah Cane led MTC's team to the meeting with the MWMJC delegation which included its Chairman Mr Simon Lim, Vice-Chairman Mr George Yap and Treasurer Mr Chin Lee Yen.

During the meeting, MWMJC members requested MTC's assistance in several areas such as expanding the Financial Incentive for Purchase of Machinery programme to non-SMEs, mounting raw material sourcing missions to selected countries in Eastern Europe as well as liaising with the

Department of Agriculture to facilitate the registration of European mixed species for importation into Malaysia.

The MWMJC representatives also sought MTC's further feedback on the Malaysian Wood Expo (MWE), which was held successfully last year. MWMJC also requested MTC to reconsider reviving its highly-popular photography competition focussing on forest biodiversity and timber applications, and also registered their interest in participating in MTC's Familiarisation Programme for Journalists and Trade Representatives to have a better understanding on logging operations and sustainable management of the forest. 🌱

SKLWIA celebrates 68th anniversary

Led by its President, Mr. Low Chee Hock, members of the Selangor & Kuala Lumpur Wood Industries Association (SKLWIA) celebrated the 68th anniversary of its establishment on 15 February 2020 with a dinner held in Bandar Mahkota Cheras in Kajang, Selangor.

SKLWIA is an affiliate member of the Malaysian Wood Industries Association (MWIA), formerly known as the Timber Trade Federation of Malaysia, which is one of the founding members of MTC.

Among the invited guests present at the occasion were MTC Chairman, Dato' Low Kian Chuan, MWIA President Mr. Goh Chee Yew, MTIB Director-General Encik Mohd Kheiruddin Mohd Rani and his Deputy Dato' Dr. Mohd Puat Dahalan, and MTC Deputy CEO Mr. Wong Kah Cane. 🌱



Invited guests and SKLWIA exco members celebrating the occasion.

MTC debuts at Nepal Wood



MTC participating at Nepal Wood for the first time.

For the first time, MTC participated in the Nepal Wood Expo 2020 which is considered as the only focused woodworking exhibition in Nepal. The expo was held concurrently with the second edition of Nepal International Furniture & Home Décor Expo from 31 January to 2 February 2020 at the Bhrikuti Mandap Exhibition Hall in Kathmandu. The show was jointly organised by Futurex Trade Fair & Events Pvt. Ltd, India, and Media Space Solutions Pvt. Ltd., Nepal.

There were 172 exhibitors from Gabon, Germany, Austria, Thailand, Malaysia, Italy, Belgium, China and India. Among the exhibitors were furniture manufacturers, architects, construction builders, interior decorators, sawmillers, timber merchants as well as those in the carpentry industry, hardware dealers and distributors, plywood and particleboard manufacturers, forestry officials, and manufacturers of doors and windows.

MTC took up a booth measuring 12 square metres in the fair, which had a total exhibition space of over 9,200 square metres. The number of visitors increased this year by 40% to 18,500 as compared to last year. 🌱

The lights never dim at IndiaWood

Hailed as the pioneer woodworking exhibition in India, IndiaWood 2020 was held at the Bangalore International Exhibition Centre from 27 February to 2 March 2020. As one of the biggest woodworking exhibitions in South Asia, IndiaWood brought together top industry players including manufacturers of furniture, kitchen cabinets, boards, fittings and components as well as sawmillers, traders, architects, builders and interior designers.

The show also attracted visitors from across India as well as its neighbouring countries such as Sri Lanka, Maldives, Bangladesh, Nepal, Bhutan, and the Middle East.

Much of the exhibits centred on product innovation, automation, carpentry, skill upgrading, and digitalisation with the objective of enhancing the Indian furniture manufacturing and woodworking industry.

IndiaWood introduced a new segment this year. The new edition was India Mattress Tech and Upholstery Supplies which featured the latest in technology and product innovation by leading international manufacturers.

Spread across 65,000 square metres plus an area with five dedicated themed halls and 12 country pavilions from Canada, Japan, Sweden, Latvia, China, Italy, Taiwan, Malaysia, Russia,



Enquiries being attended to at the MTC booth.

Germany, Turkey and USA, IndiaWood had more than 870 exhibitors from over 50 countries. There were more than 240,000 trade visitors at the fair. 🌱



® Export Furniture Exhibition, Malaysia

COMPLIMENTARY
BUYERS' HOTEL STAY

+603-6270 9332

info@efe.my



RESCHEDULED TO :

**27-29
AUGUST
2020**

KLCC

www.efe.my



Product Design
Courtesy of:
**Marcoco Furniture
Industries Sdn Bhd**

Presented by:



Organised by:



Endorsed by:



Supported by:

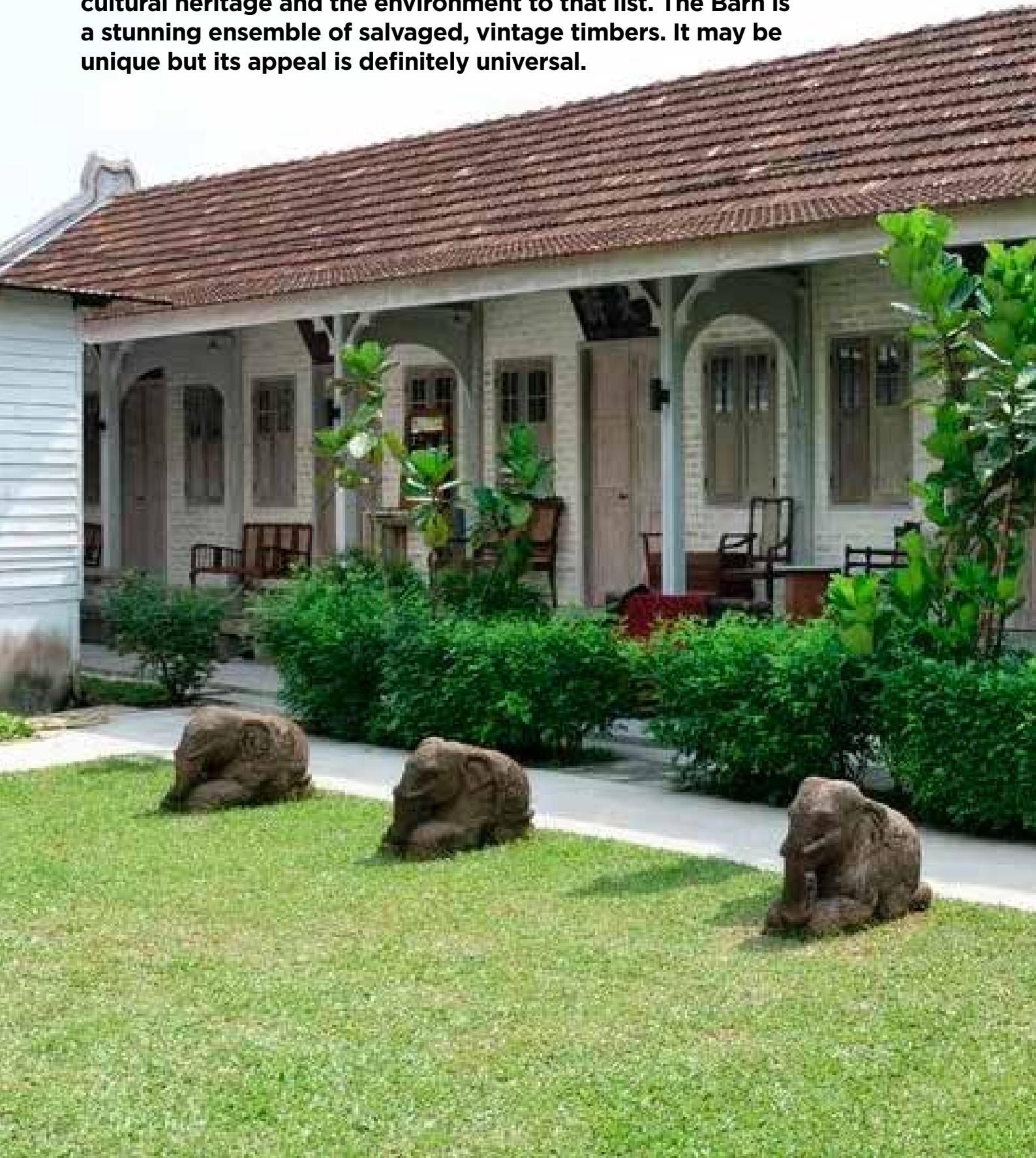


Strategic partner:



Old is new again

Property owners who build with timbers do so because of wood's warmth, solidity and beauty and when someone uses reclaimed timbers, you can add class and a love for history, cultural heritage and the environment to that list. The Barn is a stunning ensemble of salvaged, vintage timbers. It may be unique but its appeal is definitely universal.





From the side, the features of this long house are more colonial in nature.

From the periphery, you wouldn't be entirely wrong for hazarding a guess that the property beyond the walls may exude mystic Balinese charms but as the timber gate slides open what greets you first is an expanse of land with pieces of reclaimed timbers, vintage furniture and woodworking machinery on its sides with the middle ground left bare.

However, within seconds, your attention gets diverted either to the left or right depending on what resonates with your inner being. On the left you have the stately Gooi Residence, which is a timber structure with antique bricks that are splendid editions which complete the rustic feel of this amazing property made of recycled timber columns, beams, trusses, floor boards, doors and windows.

Though everything within this house has been kept to a minimum, the Gooi Residence, which was built in 2003, is yet another out-and-out reminder of timbers' remarkable functionality, beauty and majesty. The timber gate, which is made from Chengal, Balau, Merbau, Kempas and Rain Tree, is an interesting showcase of how timbers of different densities can be put together for a single use.

Turn to your right and you will notice a long house in between the foliage of a well-landscaped property with Balinese

influence. The porch is fashionably similar to that of a Queen Anne with decorative brackets on its posts minus the railings and turned spindles though.

From the side, the features of this long house are more colonial in nature but step into the house and you will see a myriad of salvaged articles predominantly from old Chinese households co-existing in harmony with some western furniture.

"The idea to build this property, which I call The Barn, came during my visit to the Isle of Skye in Scotland. I went to a bakery which was one of the oldest in Scotland. It was a barn that was turned into a bakery where you can dine while watching the bakers at work. I looked at the colour and shape of the building and I told myself I was going to build one just like it," said owner Gooi Kok Wah, 51.

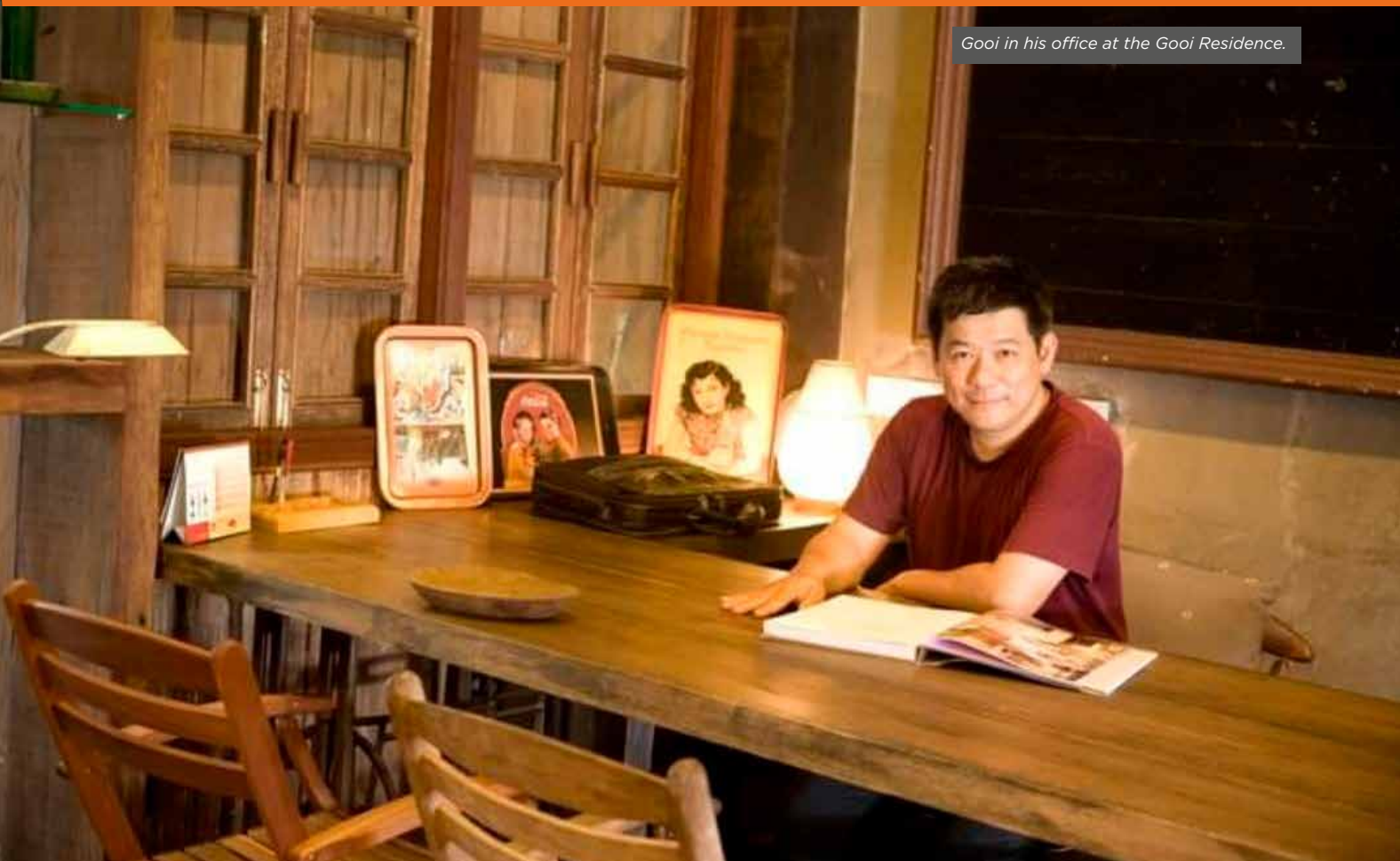
According to Gooi, he sketched the layout of the building the very next day upon returning from Scotland. A discerning eye would notice that some features of western architecture had been captured in essence and this includes The Barn's gable roof, which is a regular feature in properties in temperate countries to help shed snow, ice or water easily.



The ceiling and a door in whitewash finish.



Main entrance. Notice the butterfly-shaped metal piece on the roof pitch.

*Gooi in his office at the Gooi Residence.*

“Well, we are in Malaysia and the house has been built to accommodate cross-ventilation and the necessary features suited to our climate,” said Gooi, who owns both the Gooi Residence and The Barn which are located over a six-hectare plot of land in Bukit Panchor in Nibong Tebal, Penang.

An accountant by profession, Gooi’s involvement in the reclaimed timber business started when he was the General Manager of a public-listed furniture export company in Nibong Tebal.

“There was this one time when we were having problems delivering our orders on time. It was for an outdoor dining table and for the table leg we needed a chunky 4” x 4” piece of timber. It was impossible to use fresh timbers for this as it would take at least six months to kiln dry the wood but we had to deliver the dining table in three months,” he said.

One day on his way to work, he saw a wooden house being demolished and the size of timbers that were being brought down was just what he needed. Gooi bought those pieces and took them back to the factory for QC checks.

“The results were fantastic. The moisture content was well within the tolerance level. The texture of the wood grain was good. They were in a very mature state with no cracks. This not only solved my problem but made me realise that reclaimed timbers were better than fresh-cuts as they are seasoned, stable and are much cheaper,” he said.

It wasn’t too long before Gooi seized the window of opportunity that had presented itself. He quit his job, spoke to his timber supplier about setting up a reclaimed timber business who coincidentally at the time was demolishing a

*One of the many antique furniture items showcased in The Barn.*

sawmill and had agreed to sell the timbers which were mainly Balau to Gooi.

"When I looked at the sawmill I thought there won't be much but after it was torn down, there were six trailer-loads of timber to be carted away and all in relatively good condition," he added. One thing that Gooi learnt very early on in this business was that the supply of raw material can be uncertain.

Soon, he had requests from nearby fishermen in Sg Uda who wanted to build fish shelters. Gooi provided all the timber and this was followed by another project - the construction of the award-winning Ferringhi Garden Restaurant in Penang.

Gooi went on to salvage timbers from properties all over Malaysia such as antiques as well as articles with architectural, cultural or historical significance such as classical oriental furniture, room dividers, entrance doors, lamps with wooden stands, screen and wall panels, and shop signages .

When Gooi learnt that the Mutiara Teluk Bahang resort in Penang was going to be demolished, he salvaged the wardrobe doors, among others, from the resort.

"There were 10 wardrobe doors in each room and the resort had 400 rooms. I had 4,000 pieces of these solid Merbau doors and was thinking how to put them to good use. I also realised that people need to see how timbers can be recycled. That was one of the reasons why I wanted to build The Barn to showcase timbers' winning attributes," he said.

The Barn's ceiling is made of the resort's wardrobe doors. These Merbau doors were given a clear coat and sanded down by almost 30% to give a whitewash finish. Even the Chengal beams are given the same treatment and the trusses are held in place using the traditional interlocking joint mechanisms but some are bolted for added security.

The somewhat pastel finish of the roof trusses and beams give the long house a bright look that complement everything inside it, especially the antique carved lacquered wooden furniture typically found in rich Chinese households of yore and the Chengal windows which were extracted from a bungalow in Port Dickson, Negeri Sembilan.

Not all items inside The Barn are made of local timbers. Gooi had also salvaged materials from an old bungalow in Penang Hill which had furniture made of Brazilian Kingwood that was brought in from London.



Entrance with a five-foot way in front of it is a common feature of Penang homes.



Most of the timbers used in the making of The Barn are Chengal, Balau and Merbau as well as Kempas and Seraya.

The long house, which was built in 2016, is basically divided into three sections that are separated by partitions and a doorway one of which comes with Chengal frames holding in place elaborately designed wooden carvings made of Dark Red Meranti.

Gooi, did not omit his Penang hometown influence in The Barn. The entrance of the house is similar to designs found in the front of most shophouses, in Penang and other towns in Malaysia, built during the British colonial era with a five-foot way and where the top of the roof pitch carries Chinese building codes that reflect the homeowners birth element based on Chinese zodiac signs.

On the roof pitch also lies a butterfly-shaped metal piece which was also salvaged from an old Chinese house. "That 'butterfly' is a metal holder that keeps in place the wall and a wooden beam inside the wall to prevent the wall from tilting," said Gooi.

Most of the timbers used in the making of The Barn are Chengal, Balau and Merbau as well as Kempas and Seraya. Gooi said most of these timbers are between 50 and 300 years old.

These reclaimed timbers had a rich past and their future of yet-to-be-told stories will be nothing short of amazing. Though The Barn is a brick building, it is the timbers that are the real artwork as they show their compatibility as a building material as well as their decorative and environment-friendly attributes. 🌿



A myriad of salvaged articles predominantly from old Chinese households co-existing in harmony with some western furniture.



The building can house more than 400 students. Photo credit: ArchDaily.

Vancouver's tallest timber tower

The tallest timber tower in Vancouver stands 53 meters high in the city's skyline. Designed by Acton Ostry Architects, the 18-story building began construction in November 2015 and has since opened the floodgates for a new wave of mass timber towers globally.

Erected at a record speed of two floors per week, the building can house more than 400 students at the University of British Columbia's Brock Commons Student Residence. Offsite-production and the careful coordination of trades saw its official completion in mid-2017.

The building utilises a hybridised construction model, with concrete cores and prefabricated steel elements assisting the mass timber frame. Lateral and vertical stability is gained from the combination of these material elements.

To meet the new seismic design requirements for the 2015 National Building Code of Canada, steel connectors were fitted to the glulam columns to provide direct load transfer between the columns and a grid of cross-laminated timber (CLT) panels.

The glulam columns and the CLT panels were prepared offsite, allowing them to be installed immediately as they arrived at the site. Structurlam, a renowned manufacturer of mass timber products and packages, provided the mass timber package. Their engagement in the early stages of manufacture design allowed the process of lamination to be optimised.

CNC machinery and heavily refined 3D information allowed a level of precision that was integral to this perfect assembly. The careful preparation taken in the pre-production stages ensured that the building stuck to its ambitious timeline - one floor every three days - with virtually zero wastage.

The four trades working on the erection of the tower had to work together perfectly in tandem, with no team jumping ahead



The timber tower stands 53 metres high. Photo credit: ArchDaily.

of another. The eight-week completion time for the mass timber structure will go down as a significant milestone in construction, setting the standard for the completion of other wooden buildings. 🌱

Source: ArchDaily.



The 'wakaf', an elevated decking, or traditional Malay gazebo, used as a congenial spot for picnicking and socialising.

The making of a Malaysian garden

Being one with nature has always been our passion and we have always tried to bring it home so everyone can enjoy it, says Desmond Ho, Founder and CEO of Terra Garden, whose vision is to forge a truly Malaysian garden identity, one that is instantly recognisable around the world.

Many years back, Desmond, a landscape artist lamented the fact that Malaysia lacked a garden design of its own. While Colonial, French, Balinese styles had unmistakable character, he noticed that Malaysia seemed to borrow interest from elsewhere to establish some semblance of local identity.

"In the past, we designed gardens and landscapes with influences from Bali, Thailand, Vietnam and even from the west, but none from our very own culture," he elaborates.

He then embarked on the task to restore the pride of Malaysia by inspiring a truly Malaysian garden design and style. The rich multi-cultural heritage that he grew up in gave him the inspiration, resources and ideas he needed to push his designs and concept through.

Today, Desmond is one of the champions in perpetuating a homegrown Malaysian style through its Neo Nusantara outdoor designs, which he conceptualised.

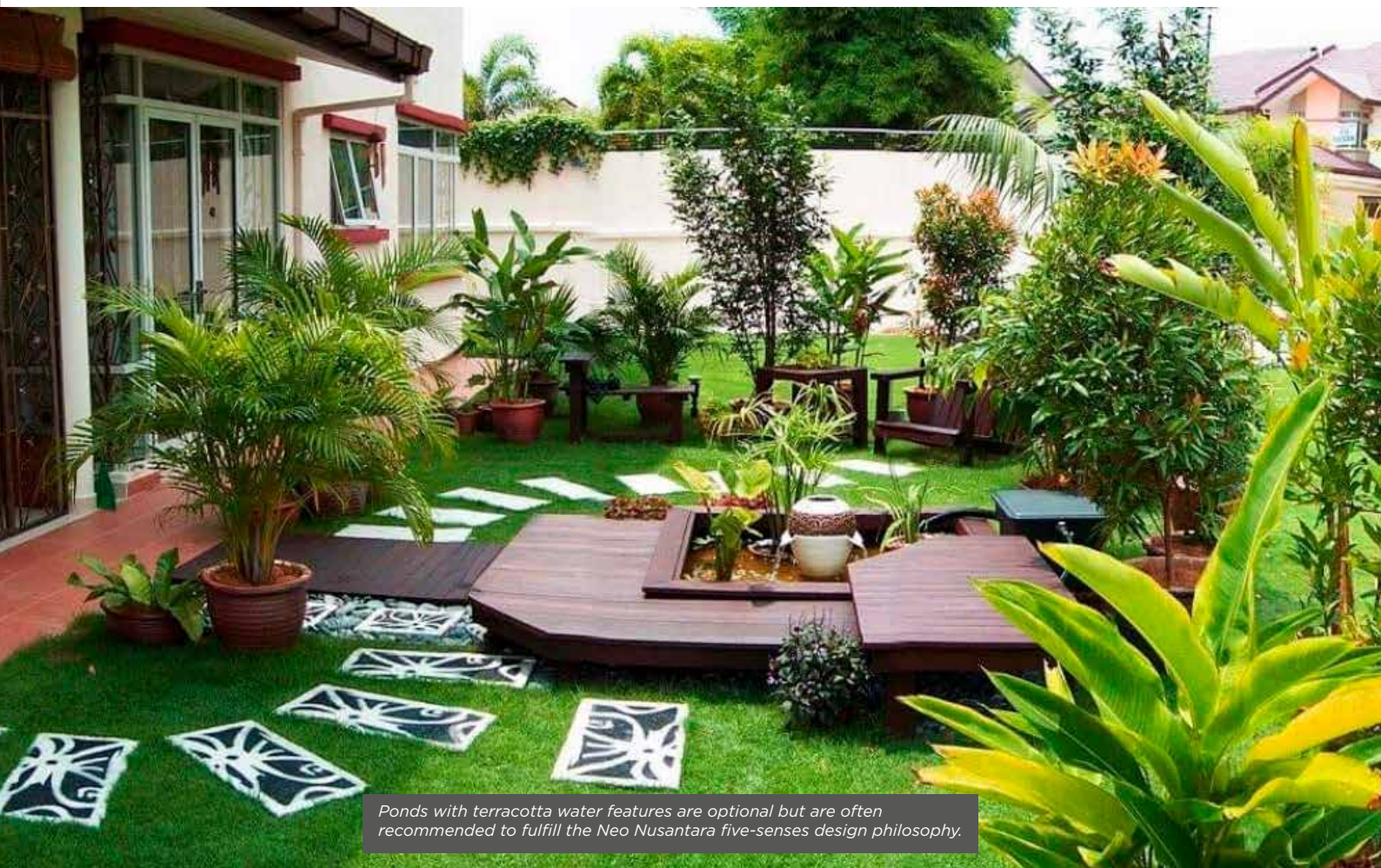
Says Desmond: "The philosophy behind Neo Nusantara or 'New Malay Archipelago' is garden landscaping that forms the sincerest representation of culture, arts and craft that Malaysians of every age and race can identify with easily.

"Essentially, the Neo Nusantara design philosophy combines visual pleasantries with the calming sound of water or rustling leaves, the scent of fragrant flowers and plants, the touch of a smooth wood surface and such, all in a garden setting that reflects a Malaysian lifestyle."

A typical Neo Nusantara garden is a harmonious combination of components that are both versatile and based on traditional fixtures of Malaysian origin. This includes the 'wakaf', an elevated decking, or traditional Malay gazebo, used as a congenial spot for picnicking and socialising.

Occasionally, a motif-engraved lattice that represents the traditional kilt or 'kain pelek' is applied. Ponds with terracotta water features are optional but are often recommended to fulfill the Neo Nusantara five-senses design philosophy.

The 'wakaf', a decking or any type of wooden structure used, is often built using high quality wood simply because it is available locally and its durability makes it the ideal adversary for the harsh tropical climate. The 'wakaf' alone uses one of the toughest wood available, Chengal.



Ponds with terracotta water features are optional but are often recommended to fulfill the Neo Nusantara five-senses design philosophy.



Desmond prefers to use wood because of its aesthetics.

"All these are just styles, but what makes us unique is the substance. It's about drawing inspiration and harnessing pleasure from Mother Nature," Desmond enthuses.

On why he prefers to use wood, Desmond explains: "We love wood because of its aesthetics. Since we are talking about pleasing our five senses based on Mother Nature's attributes, we do see wood as an excellent natural element in our garden designs. It's always nice to be in touch with something natural. Imagine the pleasure of walking barefoot on wooden flooring.

"To a lot of people, that is reminiscent of their childhood days in a traditional wooden house in a 'kampong'. A 'wakaf' made of Chengal is cool to the touch and makes a perfect resting spot in a hot and humid weather. And the earthy colours of wood are pleasant to the eyes too."

Desmond's humble beginnings have in fact become the basis on which his success is built. Besides striking a chord with Malaysians craving for their own identity, Terra Garden has taken



Wood is an excellent natural element in Desmond's garden designs.



Terra Garden's vision is to help clients enjoy their garden space, no matter how big or small.

its Malaysian garden concept overseas such as to Australia, England, Germany, Ireland, New Zealand and Switzerland.

Along the way, it has garnered a slew of international awards, including the Good Design Award from the Japan Industrial Design Promotion Organisation and the Garden Heaven Award (Bronze Award) at the Garden Heaven Show 2006 held in Ireland, UK. Besides which, Terra Garden's unique vision has also

attracted media attention with numerous features in television programmes and newspaper columns.

Ideally located on the rooftop of the Gardens Mall at Mid Valley City, Kuala Lumpur, Terra Garden's vision is to help clients enjoy their garden space, no matter how big or small, and fall in love with nature again, by literally engaging with nature within the comforts of their homes. 🌿



The earthy colours of wood are pleasant to the eyes.



APEC EGILAT17 Meeting and Workshop

The 17th Meeting of the APEC Experts Group on Illegal Logging and Associated Trade (EGILAT17) and the Workshop on Advancing the Trade and Distribution of Legally Harvested Forest Products in the APEC Region 2020 were held in Putrajaya, Malaysia from 4-7 February 2020.

EGILAT17 was participated by representatives from 14 APEC member economies, namely Australia, Brunei Darussalam, Chile, China (via teleconferencing), Indonesia, Japan, Korea, Malaysia, New Zealand, Peru, Philippines (via teleconferencing), Chinese Taipei, Thailand and the United States. Non-Member Participants (NMPs) were represented by Programme for the Endorsement of Forest Certification, International Wood Products Association, World Resource Institute, International Tropical Timber Organization, Forest Trends, European Forest Institute, United Nations Office on Drugs and Crime, and TRAFFIC.

The same EGILAT17 participants also participated in the workshop together with delegates from the Indonesian Sawmill and Wood Working Association, Korea Timber Plywood Distribution Association, Vietnam Timber and Forest Product Association, Vietnamese Handicraft and Wood Industry Association, FSC International, United Nations Food and Agriculture Organisation, Owl Ting Group, Institute for Global Environmental Strategies, Carnstone Asia, Taiwan Architecture & Building Centre as well as via teleconferencing with China Timber and Wood Products Distribution Association, NEPCON, Netherlands Timber Trade Association and China Academy of Forestry.

The Malaysian delegates to EGILAT17 and the workshop were led by Mr Mad Zaidi Mohd Karli, Deputy Secretary-General (Commodities) of the Ministry of Plantation Industries and Commodities (then known as Ministry of Primary Industries), which hosted both events. MTC was part of the Malaysian delegation which

included representatives from the Ministry of Energy and Natural Resources, Forestry Department Peninsular Malaysia, Forest Department Sarawak, Malaysian Timber Industry Board, Malaysian Timber Certification Council and Sarawak Timber Association. Representatives from The Timber Exporters' Association of Malaysia were also present during the workshop.

The key points from EGILAT17 and the workshop were, *inter alia*:

- Current Issues Impeding the Trade of Legal Timber
- EGILAT Compendium of Resources
- Technological Advancement to Combat Illegal Logging and Associated Trade
- Latest Developments in Legal Timber Trade Framework

Participants to EGILAT17 and the workshop concurred that both events were crucial towards maintaining a concerted effort among APEC economies and other countries (i.e., through cross-fora engagements) towards subduing the momentum of the trade in illegal timber products.

The participants acknowledged that the way forward for the economies to combat the trade of illegal timber products is through enhanced information sharing among economies on database collection of wood species, enforcement techniques and experiences, and collaboration with international agencies.

For Malaysia, EGILAT is also an ideal platform to share correct information on its industry practices on sustainable forest management, timber industry legal supply chain and export as well as to exchange information with senior officials from APEC economies. 🌱

IPCC-52

The 52nd session of the Intergovernmental Panel on Climate Change (IPCC-52), convened from 24-28 February 2020 in Paris, France, concluded after agreeing on an outline for the Synthesis Report (SYR) of the Sixth Assessment Report (AR6), which is scheduled for delivery in May 2022.

IPCC-52 brought together more than 130 participants from 113 countries. For the first time since IPCC-47, the Panel did not have to adopt a report and approve its Summary for Policymakers (SPM). Instead, IPCC-52 had to provide the indicative outline and additional guidance notes for the authors of the SYR of AR6.

The outline for the SYR, produced for AR6 as a whole, was discussed throughout the week and was the subject of contact group discussions on the penultimate evening and last day of IPCC-52. It contains a stage-setting introduction and three sections: Current Status and Trends; Long-term Climate and Development Futures; and Near-term Responses in a Changing Climate.

Some of the more contentious issues that came up during the discussions on the outline were related to the carbon budget, time frames, just transition, and extreme events, and loss and damage.

The meeting engaged in detailed consideration of the organisation of future work of the IPCC in light of the Global Stocktake (GST) under the Paris Agreement, on which views

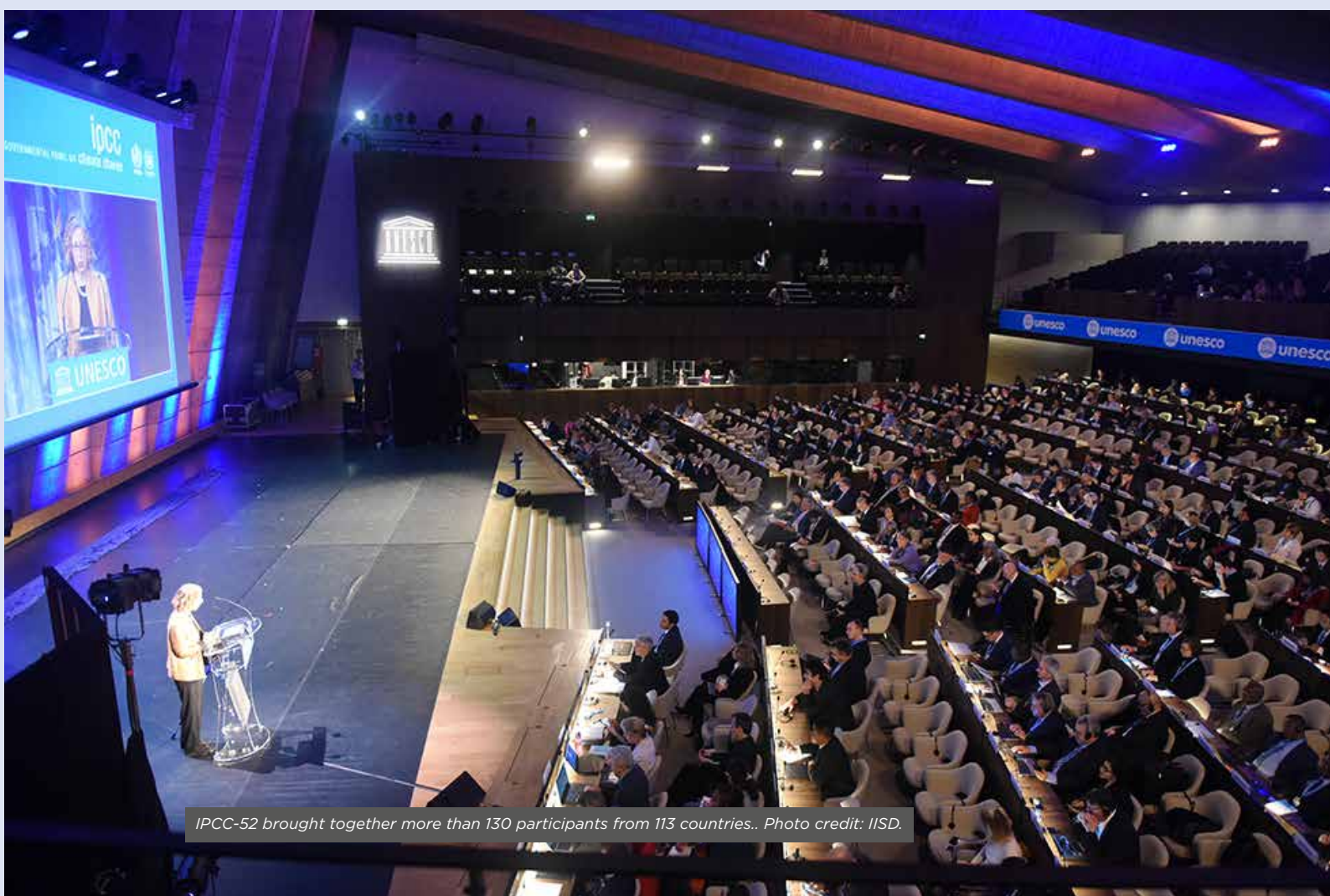
diverged over a range of options regarding possible alignment of IPCC and GST cycles. Some questioned the need for discussing an alignment at this point, while others suggested other ways of promoting timely inputs to the GST.

The meeting also adopted the IPCC Gender Policy and Implementation Plan, which, among other things, establishes a Gender Action Team to oversee and monitor implementation of the Plan and develop and implement a protocol and process for addressing complaints.

The Panel considered reviewing the Principles Governing IPCC Work, and whether to establish a task team to consider which elements might need reviewing, but participants did not agree on a review process, and the Panel will consider recommendations forwarded by the Bureau at IPCC-53.

In concluding remarks, IPCC Chair Hoesung Lee thanked delegates for their work and efforts, which “paid respect to the spirit of cooperation and upheld the integrity of the IPCC, and objectivity of its assessment activities”. He thanked the IPCC Secretariat and everyone else who helped make IPCC-52 a success. 🌱

Source: *Earth Negotiations Bulletin (ENB)*
Vol. 12 No. 776 | 2 March 2020



IPCC-52 brought together more than 130 participants from 113 countries.. Photo credit: IISD.



Datuk Patinggi (Dr) Abang Haji Abdul Rahman Zohari (centre) officiating the event. Photo credit: Sarawak Forestry.

New Urban Green Area for Sibü

As part of the Sarawak state government's conservation policy, the Bukit Lima Nature Reserve (BLNR) will be gazetted as an 'Urban Green Area'. The decision to gazette the area is also part of Sarawak's effort in educating the people of Sibü, particularly the younger generation, on sustainable development while developing the town.

In announcing this during the launch of World Wetlands Days celebration in the state on 8 February 2020, Sarawak Chief Minister, YAB Datuk Patinggi (Dr) Abang Haji Abdul Rahman Zohari bin Tun Datuk Abang Haji Openg said that Sarawak is one of the states in Malaysia with positive and innovative policies in development plans whereby the government has identified green areas for conservation.

"Once we gazette, BLNR will not be used for development; it will be a green area in Sibü. We will improve the infrastructure here, re-do the drainage around Bukit Lima area and it will become a tourism area.

"We want to promote Sibü. With all the natural habitat, we will comply with international requirements. We conserve our area while we develop and we also give space to the natural habitat," he said, adding that funds will be allocated under the 12th Malaysia Plan to improve the road leading to BLNR, which has a total area of about 220 hectares. 🌱

Source: BERNAMA.

Sabah appoints 100 volunteer forestry guides

A total of 100 locals from the Tambunan, Keningau and Sook districts have been appointed as guides under the Sabah Forestry Department's Forest Management Unit 10 (FMU 10).

Sabah's Chief Conservator of forests, Datuk Mashor Mohd Jaini, said FMU 10's jurisdiction includes the Nuluhon Trusmadi and Sungai Kiluyu forest reserves, which are internationally recognised for their unique flora and fauna.

He said the appointment of the guides is to meet the demand of the tourism industry for qualified accompagnateurs for climbers going up Gunung (Mount) Trusmadi (2,642m), the second highest mountain after Gunung Kinabalu.

Another two mountains in the area that attract tourists are Gunung Sinsing (2,603m) and Gunung Kaingaran (2,482m).

"Tourists are drawn to these places and that is the reason for the guide service," he said on 20 February 2020 after the completion



Mount Trusmadi, the second highest mountain in Sabah after Mount Kinabalu. Photo credit: kimkim.com

of an FMU 10 guide course, which is only the second to be held in the state since 2015 when 53 guides were appointed. 🌱

Source: BERNAMA.

Kuala Lumpur Forest Eco Park

Formerly known as Bukit Nanas Forest Reserve, the Kuala Lumpur Forest Eco Park is a popular ecotourism destination. With its lush tropical rainforest, it serves as a natural green lung for the surrounding metropolitan area of Malaysia's capital city.

Gazetted in 1906, the eco park is one of the oldest permanent forest reserves in Malaysia. This forest reserve is one of four forest reserves within the Federal Territory of Kuala Lumpur. The other three are Bukit Lagong, Sungai Puteh and Sungai Besi.

Conveniently located adjacent the Kuala Lumpur Tower, the Kuala Lumpur Forest Eco Park covers an area of 9.3 hectares. To preserve the natural surroundings and its habitat, the design and construction of the Kuala Lumpur Tower were carried out with utmost care and consideration.

Found within the eco park is a variety of trees, herbs, bamboo, and creepers as well as well-maintained trails ranging 300 to 500 metres long. There are also several facilities including a playground, campsite and a wooden gazebo overlooking the Kuala Lumpur Tower.

A major feature is the Canopy Walk, which is a wood-and-steel aerial bridge of about 200 metres in height. The bridge towers above the forest reserve, offering amazing views of the Kuala Lumpur Tower and the city skyline.

The eco park is open daily from 7.00 am to 6.00 pm including weekends and public holidays. It is popular to visit the park in combination with a trip up the tower.

For more information, please contact:

Forestry Department of Peninsular Malaysia Headquarters

Tel: +603 20201606

Email: jpwkl@forestry.gov.my

Website: www.forestry.gov.my



The Canopy Walk, a major feature in the park.



View of the KL Tower from the park's entrance.

Some species of Dipterocarps and Non-Dipterocarps that you should look out for while walking along the trails.

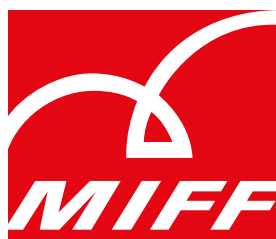
Dipterocarps

- *Shorea leprosula* (Meranti Tembaga)
- *Shorea bracteolata* (Meranti Pa'ang)
- *Shorea ovalis* (Meranti Kepong)
- *Shorea curtisii* (Seraya)
- *Shore dasyphylla* (Meranti Batu)
- *Dipterocarpus baudi* (Keruing Bulu)
- *Dryobalanops aromatica* (Kapur)
- *Hopea odorata* (Merawan Siput Jantan)

Non-Dipterocarps

- *Dyera costulata* (Jelutong)
- *Alstonia* sp (Pulai)
- *Canarium* sp (Kedondong)
- *Aquilaria malaccensis* (Karas)

Source: Malaysia Vacation Guide and Forestry Department of Peninsular Malaysia.



**MALAYSIAN
INTERNATIONAL
FURNITURE
FAIR 2021**

8 - 11 MARCH
Kuala Lumpur

**Largest Furniture
Trade Show
in Southeast Asia**

Reinventing lifestyles and smart designs
for global furniture trade

**Design
Connects
People**

www.miff.com.my

Featuring :



Millennials@Design **MAD**

Organised by :



+60 3 9771 2688
+60 3 9771 2799
info@miff.com.my

Strategic Partner :

