



UTAMO

NEOM Cit,
Tourism
destination &
industrial Hub




ITA 

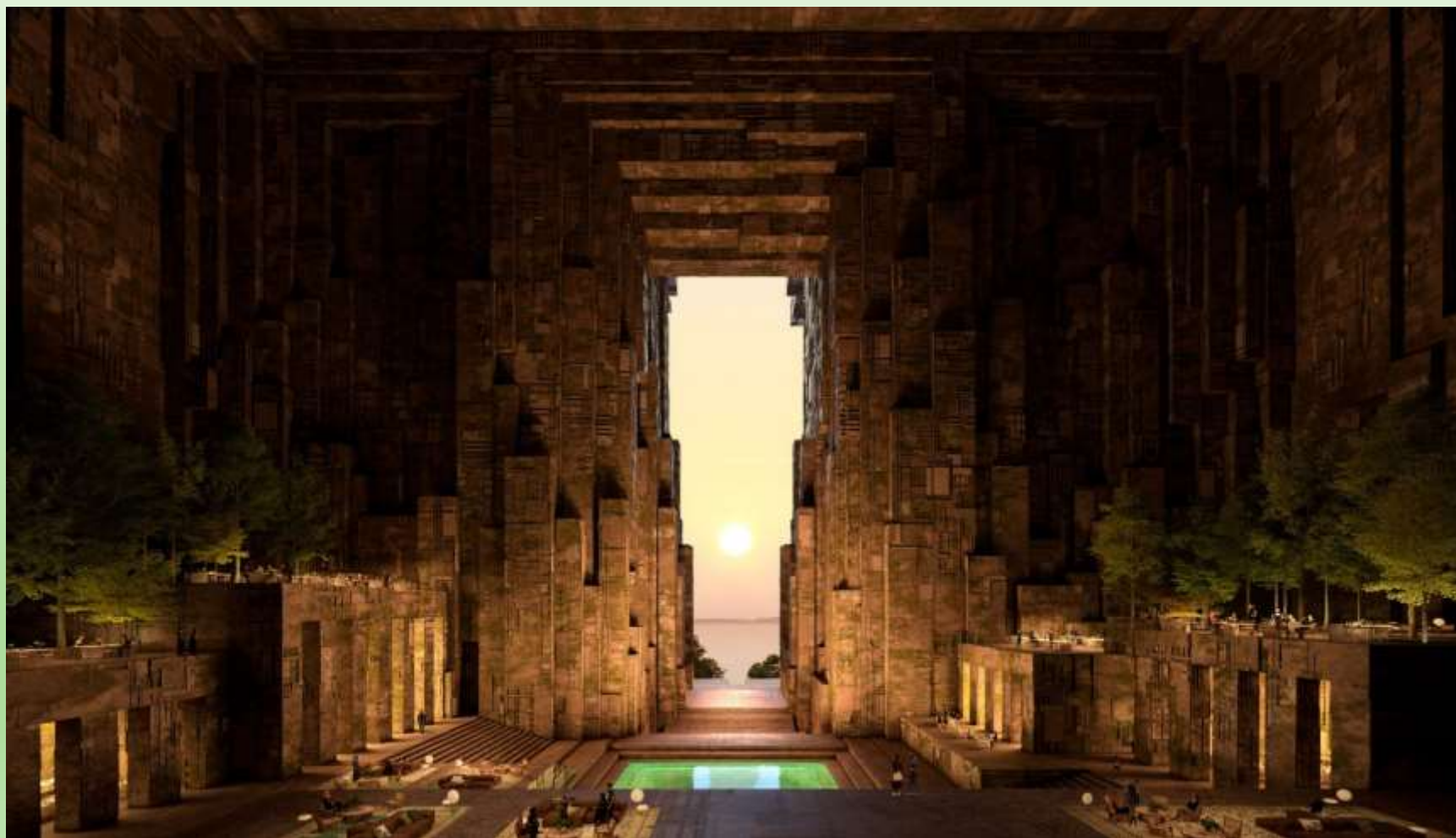
ITALIAN TRADE AGENCY

ICE - Agenzia per la promozione all'estero e
l'internazionalizzazione delle imprese italiane





THE BOARD OF DIRECTORS OF NEOM HAS UNVEILED
UTAMO, ITS IMMERSIVE DESTINATION FOR ART AND
ENTERTAINMENT. AN INNOVATIVE EVENT SPACE TO HOST
GLOBAL ARTISTS, UTAMO IS THE LATEST DESTINATION TO
BE ANNOUNCED BY THE SUSTAINABLE REGIONAL
DEVELOPMENT EVOLVING IN NORTHWEST SAUDI
ARABIA.



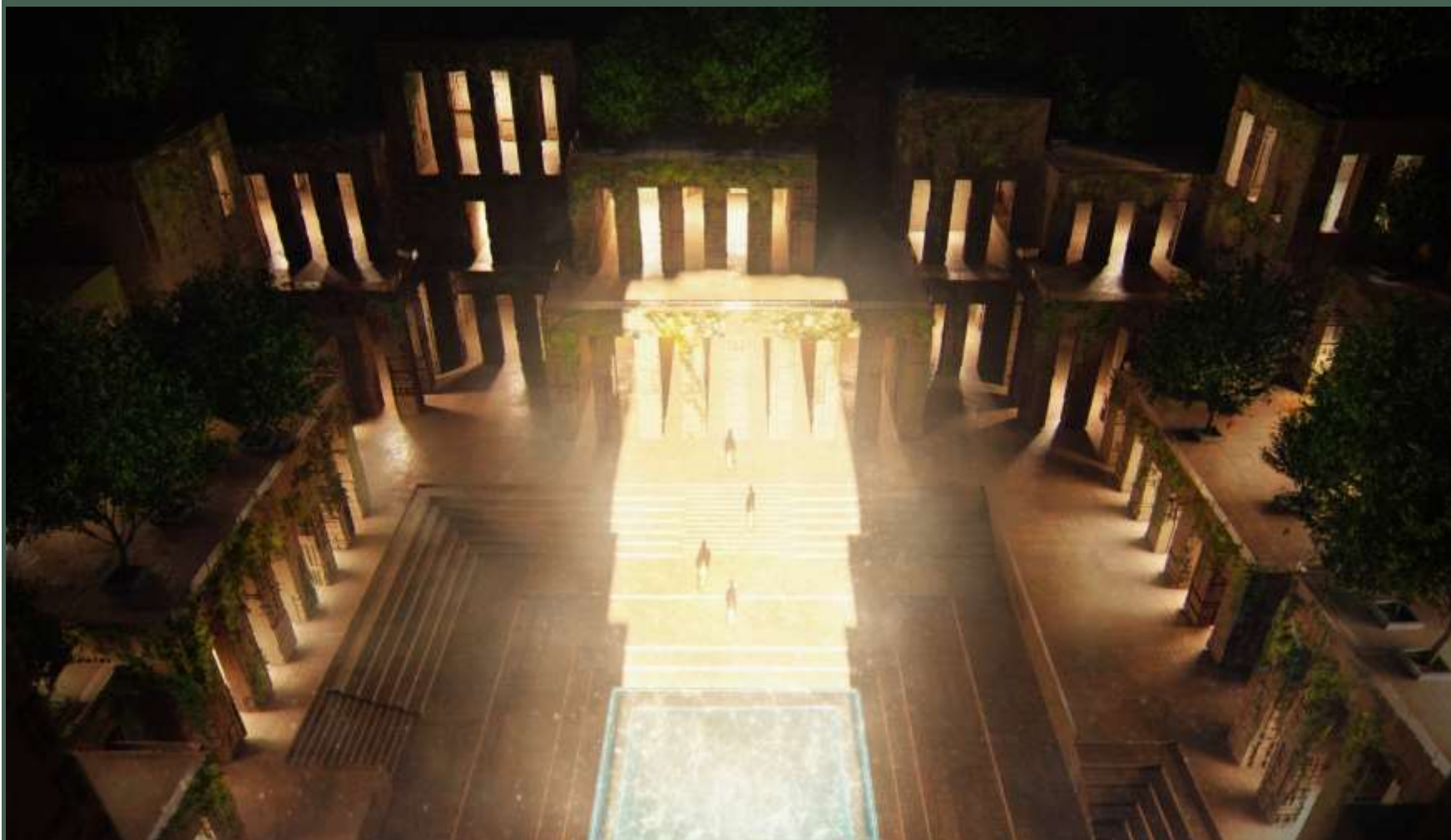
Cocooned in a mountain located along the Gulf of Aqaba coastline, Utamo creates a unique backdrop for music events, exhibitions, and art activations that will transform traditional entertainment experiences.

Combining natural beauty and technology, the venue has been designed to be a place where art and architecture blend harmoniously, providing visitors with a truly unique experience.



ITALIAN TRADE AGENCY

ICE - Agenzia per la promozione all'estero e
l'internazionalizzazione delle imprese italiane



Guests will arrive at Utamo via an extended pathway of a garden promenade, featuring more than 50 species of shrubs, herbs and flowers, before reaching the grand hall. The 64-meter-high entrance, which pays homage to art and design, sets the scene for the awe-inspiring experiences awaiting guests inside.



ITALIAN TRADE AGENCY

ICE - Agenzia per la promozione all'estero e
l'internazionalizzazione delle imprese italiane



A theatre of the future where reality and the digital realm converge, Utamo will host events that redefine the benchmark of entertainment. Its multipurpose performance space, VIP lounges, and signature restaurants will make it one of the world's most exclusive event spaces, as it plays host to performances from the globe's greatest artists.



The space will be carefully crafted to facilitate immersive artistic installations and performances. Advanced audio-visual systems will captivate guests with sensory experiences, enveloping them in audio-visual wonder as they become part of the performance itself.



GUIDED BY NEOM'S UNWAVERING COMMITMENT TO CONSERVATION AND ITS EFFORTS TO CREATE SPACES IN NATURE THAT SUPPORT SUSTAINABLE DEVELOPMENT, CUTTING-EDGE TECHNIQUES WILL BE USED IN THE DESIGN AND CONSTRUCTION OF UTAMO TO ENSURE MINIMAL INTERVENTION WITH THE SURROUNDING ENVIRONMENT.

FOR MORE INFORMATION:

[HTTPS://WWW.NEOM.COM/EN-US/REGIONS/UTAMO](https://www.neom.com/en-us/regions/utamo)

FOR REGISTRATION AS SUPPLIER:

[HTTPS://WWW.NEOM.COM/EN-US/OUR-BUSINESS/SUPPLIERS](https://www.neom.com/en-us/our-business/suppliers)